

## DEA — CERRI CANTIERI NAVALI



**Builder:** CERRI CANTIERI NAVALI

**Year Built:** 2006

**Model:** Motor Yacht

**Price:** PRICE ON APPLICATION

**Location:** Italy

**LOA:** 78' 5" (23.9m)

**Beam:** 20.83

**Max Draft:** 4' 4" (1.3m)

**Cruise Speed:** 37 Knots Kts. (43 MPH)

**Max Speed:** 44 Knots Kts. (51 MPH)

Our experienced yacht broker, Andrey Shestakov, will help you choose and buy a yacht that best suits your needs **DEA — CERRI CANTIERI NAVALI** from our catalogue. Presently, at Shestakov Yacht Sales Inc., we have a wide variety of yachts available on our sale's list. We also work in close contact with all the big yacht manufacturers from all over the world.

If you would like to buy a yacht **DEA — CERRI CANTIERI NAVALI** or would like help answering any questions concerning purchasing, selling or chartering a yacht, please call **+1(954)274-4435**

---

# TABLE OF CONTENTS

---

TABLE OF CONTENTS	2
SPECIFICATIONS	4
Overview	4
Basic Information	4
Dimensions	4
Speed, Capacities and Weight	4
Accommodations	5
Hull and Deck Information	5
Engine Information	5
PHOTOS	6
IMG_1466	6
IMG_1468	6
IMG_1469	6
IMG_1471	6
IMG_1472	6
IMG_1475	6
IMG_1476	7
IMG_1474	7
IMG_1478	7
IMG_1479	7
IMG_1481	8
IMG_1484	8
IMG_1485	8
IMG_1499	8
IMG_1506	8
IMG_1502	8
IMG_1511	9
IMG_1512	9

---

IMG_1509	9
IMG_1510	9
IMG_1515	9
CONTACTS	10
Contact details	10
Telephones	10
Office hours	10
Address	10

---

# SPECIFICATIONS

---

## Overview

---

DEA is a stunning CERRI 86 built in 2006 and delivered in 2007.

The same owner from its first delivery, DEA is the perfect yacht for charter with 4 double cabins and 2 cabins for 4 crew.

General conditions are very good, just a little aesthetic refit is suggested.

## Basic Information

---

**Category:** Motor Yacht

**Model Year:** 2007

**Year Built:** 2006

**Country:** Italy

## Dimensions

---

**LOA:** 78' 5" (23.9mm)

**Beam:** 20.83

**Max Draft:** 4' 4" (1.3mm)

## Speed, Capacities and Weight

---

**Cruise Speed:** 37 Knots Kts. (43 MPH)

**Cruise Speed Range:** 350

**Max Speed:** 44 Knots Kts. (51 MPH)

**Gross Tonnage:** 64.6 Pounds

**Water Capacity:** 1500 Gallons

**Fuel Capacity:** 1849.2 Gal Gallons

---

## Accommodations

---

**Total Cabins:** 4

**Total Berths:** 8

**Total Heads:** 8

**Crew Cabin:** 4

**Crew Berths:** 4

**Crew Heads:** 4

---

## Hull and Deck Information

---

**Hull Material:** Fiberglass

**Hull Color:** white

---

## Engine Information

---

**Engines:** 2

**Manufacturer:** MTU

**Engine Type:** Inboard

**Fuel Type:** Gas/Petrol

# PHOTOS

IMG\_1466



IMG\_1468



IMG\_1469



IMG\_1471



IMG\_1472



IMG\_1475



IMG\_1474



IMG\_1476



IMG\_1478



IMG\_1479



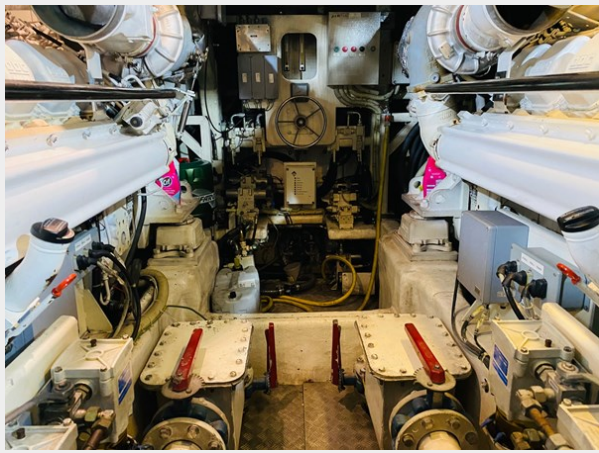
IMG\_1481



IMG\_1484



IMG\_1485



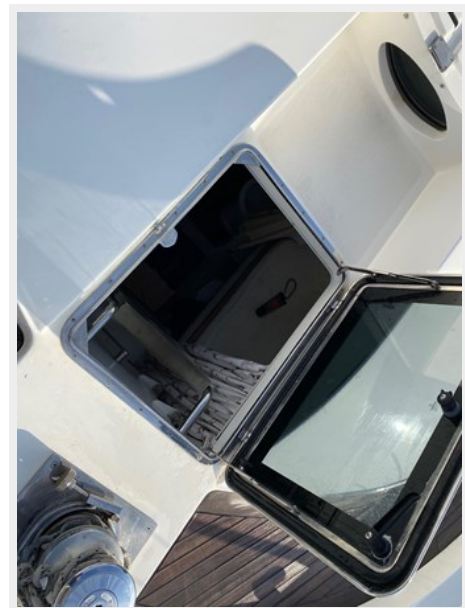
IMG\_1499



IMG\_1502



IMG\_1506





IMG\_1511



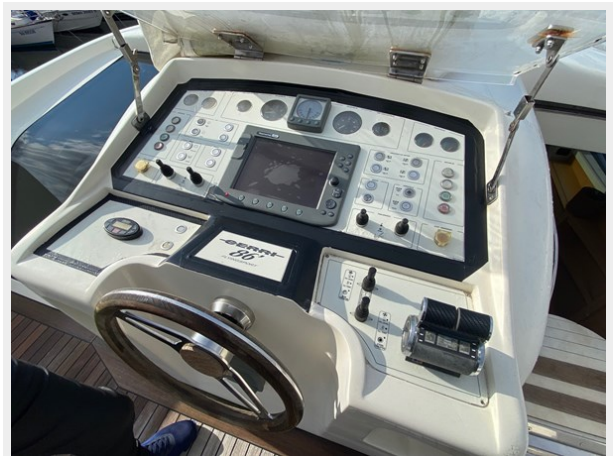
IMG\_1512



IMG\_1509



IMG\_1510



IMG\_1515



# CONTACTS

---

Andrey Shestakov, leading yacht broker of the sales department of Shestakov Yacht Sales Inc. Shestakov Yacht Sales Inc., the official representative of the Miami/Fort Lauderdale FL headquarters.

## Contact details

---

Email: [andrey@shestakovyachtsales.com](mailto:andrey@shestakovyachtsales.com)

Web: [shestakovyachtsales.com/en/](http://shestakovyachtsales.com/en/)

## Telephones

---

USA: +1(954)274-4435

## Office hours

---

Monday – Saturday: **9:00 - 21:00** EDT

Sunday: **closed**

## Address

---



Harbour Towne Marina, 850 NE 3rd St,  
STE 213, Dania, FL 33004