

NUTMEG — BENETEAU



Builder: BENETEAU

Year Built: 1991

Model: Cruising or Racing Sailboat

Price: PRICE ON APPLICATION

Location: United States

LOA: 41' 4" (12.6mm)

Beam: 12.5

Min Draft: 6' 5" (1.96mm)

Max Draft: 6' 5" (1.96mm)

Cruise Speed: 7 Knots Kts. (8 MPH)

Our experienced yacht broker, Andrey Shestakov, will help you choose and buy a yacht that best suits your needs **Nutmeg — BENETEAU** from our catalogue. Presently, at Shestakov Yacht Sales Inc., we have a wide variety of yachts available on our sale's list. We also work in close contact with all the big yacht manufacturers from all over the world.

If you would like to buy a yacht **Nutmeg — BENETEAU** or would like help answering any questions concerning purchasing, selling or chartering a yacht, please call **+1(954)274-4435**

TABLE OF CONTENTS

| | |
|------------------------------|----|
| TABLE OF CONTENTS | 2 |
| SPECIFICATIONS | 5 |
| Overview | 5 |
| Basic Information | 5 |
| Dimensions | 5 |
| Speed, Capacities and Weight | 5 |
| Accommodations | 5 |
| Hull and Deck Information | 5 |
| Engine Information | 6 |
| PHOTOS | 7 |
| 2 | 7 |
| 3 | 7 |
| 4 | 7 |
| 5 | 7 |
| 6 | 8 |
| 7 | 8 |
| 8 | 8 |
| 9 | 8 |
| 10 | 8 |
| 11 | 8 |
| 12 | 9 |
| 13 | 9 |
| 14 | 9 |
| 15 | 9 |
| 16 | 10 |
| 17 | 10 |
| 18 | 10 |
| 19 | 10 |

| | |
|----|----|
| 20 | 11 |
| 21 | 11 |
| 22 | 11 |
| 23 | 11 |
| 24 | 12 |
| 25 | 12 |
| 27 | 12 |
| 26 | 12 |
| 28 | 13 |
| 29 | 13 |
| 30 | 13 |
| 31 | 13 |
| 32 | 13 |
| 33 | 13 |
| 34 | 14 |
| 35 | 14 |
| 36 | 14 |
| 37 | 14 |
| 39 | 14 |
| 38 | 14 |
| 40 | 15 |
| 41 | 15 |
| 42 | 15 |
| 43 | 15 |
| 44 | 16 |
| 45 | 16 |
| 46 | 16 |
| 47 | 16 |
| 48 | 17 |

| | |
|-----------------|----|
| 49 | 17 |
| 50 | 17 |
| 51 | 17 |
| 52 | 18 |
| 53 | 18 |
| 54 | 18 |
| 55 | 18 |
| 56 | 18 |
| 57 | 18 |
| 58 | 19 |
| CONTACTS | 20 |
| Contact details | 20 |
| Telephones | 20 |
| Office hours | 20 |
| Address | 20 |

SPECIFICATIONS

Overview

N/A

Basic Information

Category: Cruising or Racing Sailboat

Model Year: 1991

Year Built: 1991

Country: United States

Dimensions

LOA: 41' 4" (12.6mm)

LWL: 33' 6" (10.21mm)

Beam: 12.5

Min Draft: 6' 5" (1.96mm)

Max Draft: 6' 5" (1.96mm)

Speed, Capacities and Weight

Cruise Speed: 7 Knots Kts. (8 MPH)

Water Capacity: 135 Gallons

Fuel Capacity: 32 Gal Gallons

Accommodations

Total Heads: 2

Hull and Deck Information

Hull Material: Fiberglass

Engine Information

Engines: 1

Manufacturer: Perkins

Engine Type: Inboard

Fuel Type: Diesel

PHOTOS

2



3



4



5



6



7



8



9



10



11



12



13



14



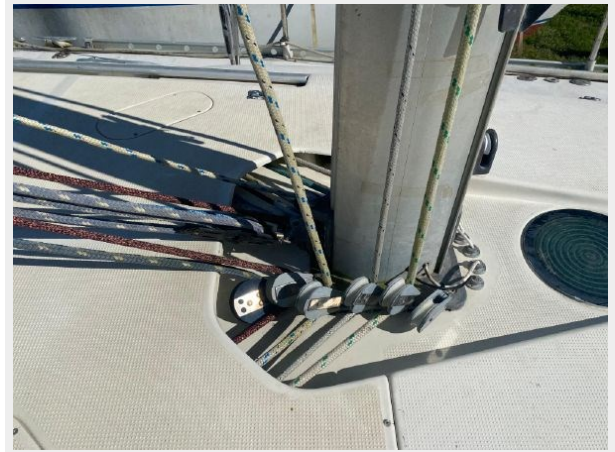
15



16



17



18



19



20



21



22



23



24



25



27



26



28



29



30



31



32



33



34



35



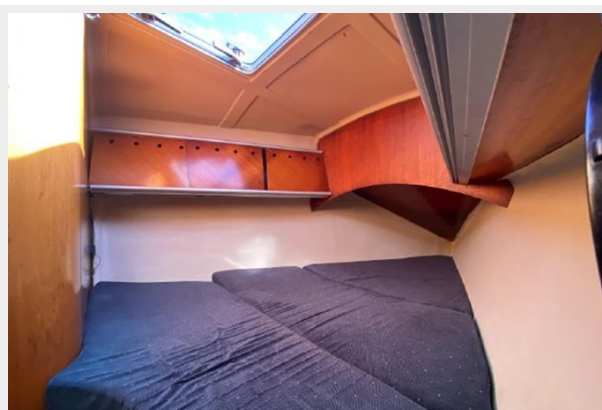
36



37



38



39



40



41



42



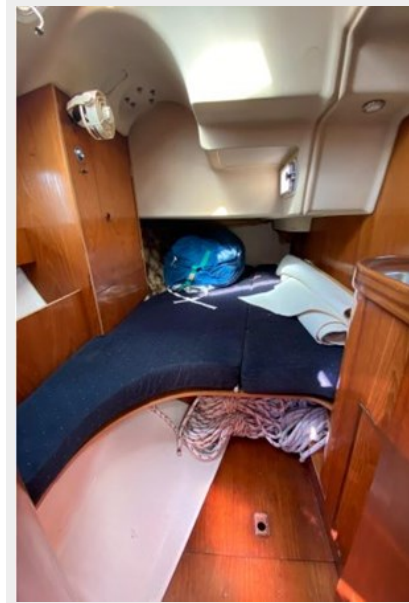
43



44



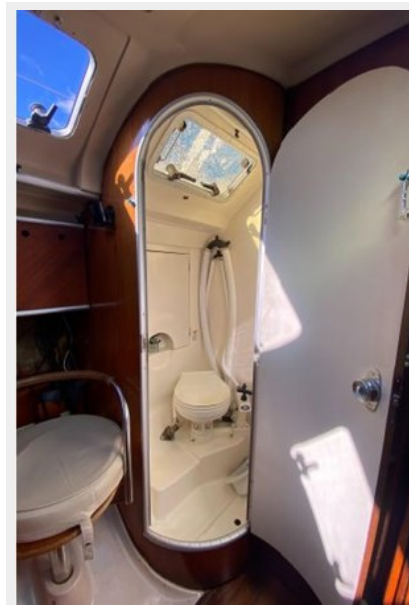
45



46



47



48



49



50



51



52



53



54



55



56



57



58



CONTACTS

Andrey Shestakov, leading yacht broker of the sales department of Shestakov Yacht Sales Inc. Shestakov Yacht Sales Inc., the official representative of the Miami/Fort Lauderdale FL headquarters.

Contact details

Email: andrey@shestakovyachtsales.com

Web: shestakovyachtsales.com/en/

Telephones

USA: +1(954)274-4435

Office hours

Monday – Saturday: **9:00 - 21:00** EDT

Sunday: **closed**

Address



Harbour Towne Marina, 850 NE 3rd St,
STE 213, Dania, FL 33004