

SEA TRADER — HATTERAS



Builder: HATTERAS

Year Built: 2005

Model: Sport Fisherman

Price: PRICE ON APPLICATION

LOA: 60' (18.29m)

Beam: 17.33

Max Draft: 5' 4" (1.63m)

Cruise Speed: 31 Knots Kts. (36 MPH)

Max Speed: 36 Knots Kts. (41 MPH)

Our experienced yacht broker, Andrey Shestakov, will help you choose and buy a yacht that best suits your needs **Sea Trader — HATTERAS** from our catalogue. Presently, at Shestakov Yacht Sales Inc., we have a wide variety of yachts available on our sale's list. We also work in close contact with all the big yacht manufacturers from all over the world.

If you would like to buy a yacht **Sea Trader — HATTERAS** or would like help answering any questions concerning purchasing, selling or chartering a yacht, please call **+1(954)274-4435**

TABLE OF CONTENTS

TABLE OF CONTENTS	2
SPECIFICATIONS	5
Overview	5
Basic Information	5
Dimensions	6
Speed, Capacities and Weight	6
Accommodations	6
Hull and Deck Information	6
Engine Information	6
PHOTOS	7
0_2787356_1_underway_profile	7
1_2787356_underway_2	7
2_2787356_underway_3	7
3_2787356_underway_4	7
4_2787356_dockside_1	7
5_2787356_dockside_2	7
6_2787356_dockside_3	8
7_2787356_cockpit	8
8_2787356_tuna_door	8
9_2787356_new_teak_coverboards	8
11_2787356_bluewater_chair	8
10_2787356_fighting_chare_refubused	8
12_2787356_new_seadek	9
13_2787356_transom_fish_box	9
14_2787356_ice_maker_mezzanine_cockpit_console	9
15_2787356_mezzanine_counter_freezer	9
16_2787356_tackle_center_port_elec_grill_above	10
17_2787356_finish_condition	10

18_2787356_bow_pulpit_windless	10
19_2787356_flybridge	10
20_2787356_flybridge_enclosure	10
21_2787356_flybridge_forward	10
22_2787356_helm_chair_covers	11
23_2787356_flybridge_seadek	11
24_2787356_flybridge_drink_frig	11
25_2787356_help_port	11
26_2787356_helm	11
27_2787356_electronics_helm	11
28_2787356_helm_electronics_control_module	12
29_2787356_electronics_port	12
30_2787356_electronics_starboard	12
31_2787356_electronics_overhead_helm	12
33_2787356_engine_room_entrance_controls	12
32_2787356_overhead_teaser_reels	12
34_2787356_engine_room_forward	13
35_2787356_engine_room_port_engine	13
36_2787356_engine_room_starboard	13
37_2787356_engine_room_icemakers_strb	13
38_2787356_engine_room_ac_systems_port	14
39_2787356_engine_room_strb	14
40_2787356_engine_room_strb_gen	14
41_2787356_engine_room_port_gen	14
42_2787356_salon_forward	15
43_2787356_salon_port_aft	15
45_2787356_dinette	15
44_2787356_salon_dinette_fwd	15
46_2787356_solon_aft	15

47_2787356_galley_forward	15
48_2787356_galley_under_counter_refrigeration	16
49_2787356_frig_draw	16
50_2787356_frig_draw_2	16
51_2787356_frig_draw_3	16
53_2787356_galley_forward	16
52_2787356_freezer_draw_icemaker	16
56_2787356_master_sr_queen	17
55_2787356_companion_way_fwd	17
58_2787356_master_sr_ensuite_head	17
57_2787356_master_sr_closets	17
59_2787356_master_sr_lamp	17
60_2787356_master_sr_head_vanity	17
61_2787356_master_sr_shower	18
62_2787356_fwd_vip_stateroom	18
63_2787356_starb_stateroom_berths	18
64_2787356_underway_4	18
65_2787356_underway_5	18
66_2787356_underway_6	18
CONTACTS	19
Contact details	19
Telephones	19
Office hours	19
Address	19

SPECIFICATIONS

Overview

Turnkey - cast off and fish!

Sea Trader is a “ready to fish” very well maintained and well-appointed 2005 60 ft Hatteras Convertible with the preferred CAT C-32 1650 HP engines and a spacious 3 stateroom, 3 head layout with a straight companion way. You will not find a better maintained vessel that clearly reflects the knowledgeable owner’s attention to detail.

Sea Trader’s owners are in the marine service business and *Sea Trader’s* maintenance and attention to detail is outstanding. There is no known deferred maintenance that has not been competed or scheduled.

Numerous upgrades - a few highlights: new teak cover boards, new carpet, amazing suite of Furuno electronics including Flir Night Vision, redundant systems, SeaDek installed on fly bridge and cockpit, recent flybridge enclosure, re-upholstery interior and exterior, electric grill cockpit mezzanine, Willy Vac in engine room, cockpit video loop recording cameras, remote control bow thrusters and cable master, fresh bottom paint tuned wheels and waxed hull, and the list goes on.....

Three staterooms, three head layout

Master queen berth, port side

VIP crossover forward 60/40

Starboard guest bunks

Granite counter tops

Interior upgrades

Washer and dryer

Central vac

Water maker

Basic Information

Category: Sport Fisherman

Model Year: 2005

Year Built: 2005

Dimensions

LOA: 60' (18.29mm)

Beam: 17.33

Max Draft: 5' 4" (1.63mm)

Speed, Capacities and Weight

Cruise Speed: 31 Knots Kts. (36 MPH)

Max Speed: 36 Knots Kts. (41 MPH)

Water Capacity: 200 Gallons

Holding Tank: 100 Gal Gallons

Fuel Capacity: 1747 Gal Gallons

Accommodations

Total Cabins: 4

Total Heads: 3

Hull and Deck Information

Hull Material: Fiberglass

Engine Information

Engines: 2

Manufacturer: Caterpillar

Engine Type: Inboard

Fuel Type: Diesel

PHOTOS

0_2787356_1_underway_profile



1_2787356_underway_2



2_2787356_underway_3



3_2787356_underway_4



4_2787356_dockside_1



5_2787356_dockside_2



6_2787356_dockside_3



7_2787356_cockpit



8_2787356_tuna_door



9_2787356_new_teak_coverboards



11_2787356_bluewater_chair



10_2787356_fighting_chare_refubused



12_2787356_new_seadek



13_2787356_transom_fish_box



14_2787356_ice_maker_mezzanine_cockpit_console 15_2787356_mezzanine_counter_freezer



16_2787356_tackle_center_port_elec_grill_above



17_2787356_finish_condition



18_2787356_bow_pulpit_windless



19_2787356_flybridge



20_2787356_flybridge_enclosure



21_2787356_flybridge_forward



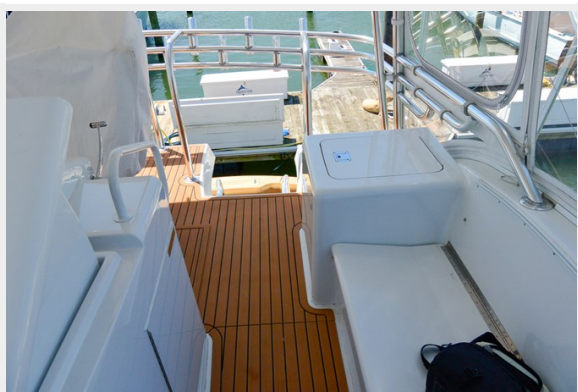
22_2787356_helm_chair_covers



23_2787356_flybridge_seadek



24_2787356_flybridge_drink_frig



25_2787356_helm_port



26_2787356_helm



27_2787356_electronics_helm



28_2787356_helm_electronics_control_module



29_2787356_electronics_port



30_2787356_electronics_starboard



31_2787356_electronics_overhead_helm



32_2787356_overhead_teaser_reels



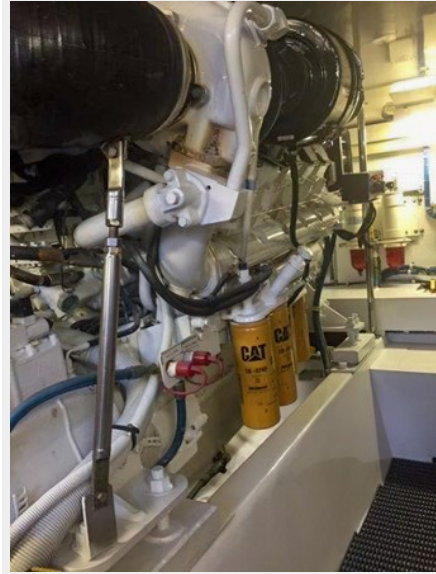
33_2787356_engine_room_entrance_controls



34_2787356_engine_room_forward



35_2787356_engine_room_port_engine



36_2787356_engine_room_starboard



37_2787356_engine_room_icemakers_strb



38_2787356_engine_room_ac_systems_port



39_2787356_engine_room_strb



40_2787356_engine_room_strb_gen



41_2787356_engine_room_port_gen



42_2787356_salon_forward



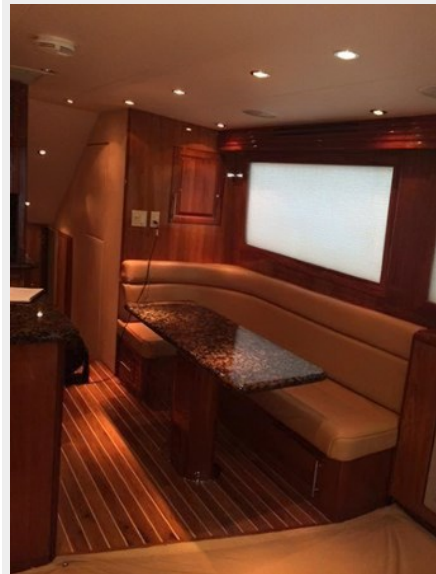
43_2787356_salon_port_aft



44_2787356_salon_dinette_fwd



45_2787356_dinette



46_2787356_solon_aft



47_2787356_galley_forward



48_2787356_galley_under_counter_refrigeration



49_2787356_frig_draw



50_2787356_frig_draw_2



51_2787356_frig_draw_3



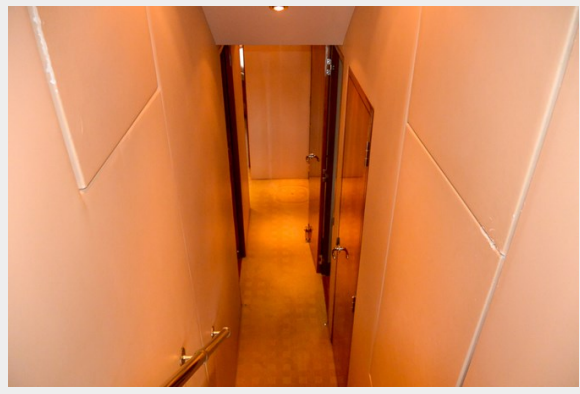
52_2787356_freezer_draw_icemaker



53_2787356_galley_forward



55_2787356_companion_way_fwd



56_2787356_master_sr_queen



57_2787356_master_sr_closets



58_2787356_master_sr_ensuite_head



59_2787356_master_sr_lamp



60_2787356_master_sr_head_vanity



61_2787356_master_sr_shower



62_2787356_fwd_vip_stateroom



63_2787356_starb_stateroom_berths



64_2787356_underway_4



65_2787356_underway_5



66_2787356_underway_6



CONTACTS

Andrey Shestakov, leading yacht broker of the sales department of Shestakov Yacht Sales Inc. Shestakov Yacht Sales Inc., the official representative of the Miami/Fort Lauderdale FL headquarters.

Contact details

Email: **andrey@shestakovyachtsales.com**

Web: shestakovyachtsales.com/en/

Telephones

USA: +1(954)274-4435

Office hours

Monday – Saturday: **9:00 - 21:00 EDT**

Sunday: **closed**

Address



Harbour Towne Marina, 850 NE 3rd St,
STE 213, Dania, FL 33004