

## NEVER MY LOVE — MARLOW



**Builder:** MARLOW

**Year Built:** 2017

**Model:** Motor Yacht

**Price:** PRICE ON APPLICATION

**Location:** United States

**LOA:** 86' 8" (26.42mm)

**Beam:** 21.5

**Min Draft:** 5' 3" (1.6mm)

**Cruise Speed:** 24 Knots Kts. (28 MPH)

**Max Speed:** 29 Knots Kts. (33 MPH)

Our experienced yacht broker, Andrey Shestakov, will help you choose and buy a yacht that best suits your needs **NEVER MY LOVE — MARLOW** from our catalogue. Presently, at **Shestakov Yacht Sales Inc.**, we have a wide variety of yachts available on our sale's list. We also work in close contact with all the big **yacht manufacturers** from all over the world.

If you would like to buy a yacht **NEVER MY LOVE — MARLOW** or would like help answering any questions concerning purchasing, selling or chartering a yacht, please call **+1(954)274-4435**

# TABLE OF CONTENTS

---

TABLE OF CONTENTS	2
SPECIFICATIONS	5
Overview	5
Basic Information	5
Dimensions	5
Speed, Capacities and Weight	5
Accommodations	6
Hull and Deck Information	6
Engine Information	6
PHOTOS	7
Transom and Swim Platform	7
Bow	7
Bow looking Starboard	7
Aft Deck	7
Salon looking forward	7
Aft Deck Table	7
Salon Looking Aft Port	8
Salon Looking Aft	8
Boat Bar	8
Salon Port Side Chairs and TV	8
Salon Starboard Side	8
Galley	8
Galley	9
Galley	9
Galley	9
Galley	9
Pilothouse Seating	9
Galley looking forward	9

Command Bridge 1	10
Helm	10
Command Bridge	10
CB Settee and Table	10
Command Bridge Day Head	10
Master	10
Master Looking Port Aft	11
Master King	11
Master Head	11
VIP Bed	11
VIP Bed	11
VIP Bed	11
VIP Shower	12
Port Guest Bunks	12
Port Guest Head	12
Port Guest Bunks	12
Stairs from Salon to Engine Room & Crew	12
Starboard Guest Bunks	12
Generator 1 and 2	13
Caterpillar C-32 Engine	13
Engine Room	13
Engine Room	13
Generator and Watermaker	13
Watermaker	13
Watermaker	14
Battery Charges	14
Port Engine	14
Crew Head	14
Crew Bunk	14

---

Full Naiad Hydrolics	14
AC Chillers	15
Crew Settees	15
Aft Docking Station	15
Upper Deck Grill & Refrigeration	15
Upper deck lounge	15
Upper deck bar	15
Tender	16
Upper deck frull view	16
Tender	16
CONTACTS	17
Contact details	17
Telephones	17
Office hours	17
Address	17

---

# SPECIFICATIONS

---

## Overview

---

Never My Love just had a full engine service performed by the CAT Dealer, Ring Power at the Marlow ServiceCenter. Her After coolers were only a year away from the recommended replacement date so the owner had themreplaced ahead of time. She is ready to cruise the Bahamas with her new owner. "Never My Love" is the finest example of melding a traditional appearing offshore pilothouse motor yacht with the finest in modern construction methods, equipment and the newest generation of technology in the highperformanceyachts of today. This exquisite vessel was built for a couple that preferred the traditional style of a Marlow on the exterior with amore modern interior that features less traditional teak and more classic bright white finishes as well as modernlighting and appliances. "Never My Love" is a unique offering on the market today. A more beautiful, well-kept, highperformanceyacht cannot be found.

## Basic Information

---

**Category:** Motor Yacht

**Sub Category:** Motor Yacht

**Model Year:** 2017

**Year Built:** 2017

**Country:** United States

## Dimensions

---

**LOA:** 86' 8" (26.42mm)

**LWL:** 74' 10" (22.81mm)

**Beam:** 21.5

**Min Draft:** 5' 3" (1.6mm)

## Speed, Capacities and Weight

---

**Cruise Speed:** 24 Knots Kts. (28 MPH) **Max Speed:** 29 Knots Kts. (33 MPH)

**Water Capacity:** 600 Gallons

**Holding Tank:** 235 Gal Gallons

**Fuel Capacity:** 3900 Gal Gallons

## Accommodations

---

**Total Cabins:** 4

## Hull and Deck Information

---

**Hull Material:** Fiberglass

## Engine Information

---

**Engines:** 2

**Manufacturer:** Caterpillar

# PHOTOS

**Transom and Swim Platform**



**Bow**



**Bow looking Starboard**



**Aft Deck**



**Aft Deck Table**



**Salon looking forward**



**Salon Looking Aft Port**



**Salon Looking Aft**



**Boat Bar**



**Salon Port Side Chairs and TV**



**Salon Starboard Side**



**Galley**





**Galley**



**Galley**



**Galley**



**Galley**



**Pilothouse Seating**



**Galley looking forward**



**Command Bridge 1**



**Helm**



**Command Bridge**



**CB Settee and Table**



**Command Bridge Day Head**



**Master**



**Master Looking Port Aft**



**Master King**



**Master Head**



**VIP Bed**



**VIP Bed**



**VIP Bed**



**VIP Shower**



**Port Guest Bunks**



**Port Guest Head**



**Port Guest Bunks**



**Starboard Guest Bunks**



**Stairs from Salon to Engine Room  
& Crew**



**Generator 1 and 2**



**Caterpillar C-32 Engine**



**Engine Room**



**Engine Room**



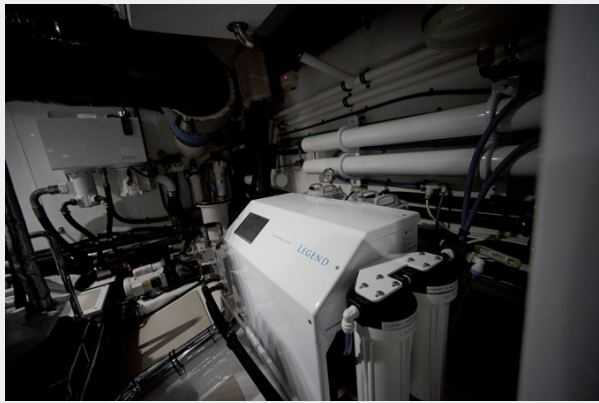
**Generator and Watermaker**



**Watermaker**



**Watermaker**



**Battery Charges**



**Port Engine**



**Crew Head**



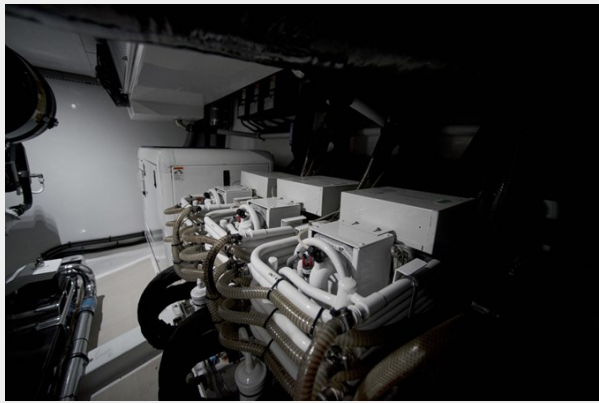
**Crew Bunk**



**Full Naiad Hydraulics**



**AC Chillers**



**Crew Settees**



**Aft Docking Station**



**Upper Deck Grill & Refrigeration**



**Upper deck lounge**



**Upper deck bar**



**Tender**



**Upper deck full view**



**Tender**





# CONTACTS

---

Andrey Shestakov, leading yacht broker of the sales department of Shestakov Yacht Sales Inc. Shestakov Yacht Sales Inc., the official representative of the Miami/Fort Lauderdale FL headquarters.

## Contact details

---

Email: **andrey@shestakovyachtsales.com**

Web: [shestakovyachtsales.com/en/](https://shestakovyachtsales.com/en/)

## Telephones

---

USA: **+1(954)274-4435**

## Office hours

---

Monday – Saturday: **9:00 - 21:00** EDT

Sunday: **closed**

## Address

---



Harbour Towne Marina, 850 NE 3rd St, STE 213, Dania, FL 33004