

## **C WAY — TRANSPACIFIC MARINE CO LTD**



**Builder:**

TRANSPACIFIC MARINE CO LTD

**Year Built:** 1998

**Model:** Trawler Yacht

**Price:** PRICE ON APPLICATION

**Location:** United States

**LOA:** 40' (12.19mm)

**Beam:** 14.5

**Max Draft:** 4' 6" (1.37mm)

**Cruise Speed:** 8 Knots Kts. (9 MPH)

**Max Speed:** 10 Knots Kts. (12 MPH)

Our experienced yacht broker, Andrey Shestakov, will help you choose and buy a yacht that best suits your needs **C Way — TRANSPACIFIC MARINE CO LTD** from **our catalogue**. Presently, at **Shestakov Yacht Sales Inc.**, we have a wide variety of yachts available on **our sale's list**. We also work in close contact with all the big **yacht manufacturers** from all over the world.

If you would like to buy a yacht **C Way — TRANSPACIFIC MARINE CO LTD** or would like help answering any questions concerning purchasing, selling or chartering a yacht, please call **+1(954)274-4435**

# TABLE OF CONTENTS

TABLE OF CONTENTS	2
SPECIFICATIONS	5
Overview	5
Basic Information	5
Dimensions	5
Speed, Capacities and Weight	5
Accommodations	6
Hull and Deck Information	6
Engine Information	6
PHOTOS	7
0_2788052_port_bow	7
1_2788052_port_bow	7
2_2788052_starboard_bow	7
3_2788052_starboard_gunwale	7
4_2788052_port_gunwale	7
5_2788052_pilothouse	7
6_2788052_windless	8
7_2788052_bimini	8
8_2788052_bow_pulpit	8
9_2788052_	8
10_2788052_cockpit	8
11_2788052_double_bench_seat	8
12_2788052_	9
13_2788052_	9
14_2788052_	9
15_2788052_	9
16_2788052_	9
17_2788052_	9

18_2788052_	10
19_2788052_	10
20_2788052_	10
21_2788052_	10
22_2788052_	10
23_2788052_	10
24_2788052_	11
25_2788052_	11
26_2788052_	11
27_2788052_	11
28_2788052_	11
29_2788052_	11
30_2788052_	12
31_2788052_	12
32_2788052_	12
33_2788052_	12
34_2788052_	12
35_2788052_	12
36_2788052_	13
37_2788052_	13
38_2788052_	13
39_2788052_	13
40_2788052_	13
41_2788052_	13
42_2788052_	14
43_2788052_	14
44_2788052_	14
45_2788052_	14
46_2788052_	14

---

47_2788052_	14
48_2788052_	15
49_2788052_	15
50_2788052_	15
51_2788052_	15
CONTACTS	16
Contact details	16
Telephones	16
Office hours	16
Address	16

---

# SPECIFICATIONS

---

## Overview

---

The Eagle 40 will appeal to those who are looking for something different in a double-cabin cruising trawler. Indeed, her salty lines, graceful sheer and low-profile silhouette (note the faux funnel stack behind the pilothouse) give her the businesslike appearance of a commercial workboat. Built in Taiwan by Transpacific Marine, she rides on a solid fiberglass semi-displacement hull with a relatively wide beam, flat aftersections, and a deep prop-protecting keel. The Eagle's all-teak interior is offered with either one staterooms forward. The pilothouse is three steps up from the salon level and features a full-size settee with a table, port and starboard deck doors, and a locker to starboard. Note that a separate stall shower. Topside, the upper helm station has a double-wide bench seat. Additional features include a functional mast, a very spacious engine room, well-secured side decks.

## Basic Information

---

**Category:** Trawler Yacht

**Model Year:** 1998

**Year Built:** 1998

**Country:** United States

## Dimensions

---

**LOA:** 40' (12.19mm)

**LWL:** 36' 10" (11.23mm)

**Beam:** 14.5

**Max Draft:** 4' 6" (1.37mm)

## Speed, Capacities and Weight

---

**Cruise Speed:** 8 Knots Kts. (9 MPH)

**Max Speed:** 10 Knots Kts. (12 MPH)

**Water Capacity:** 220 Gallons

**Holding Tank:** 39 Gal Gallons

**Fuel Capacity:** 380 Gal Gallons

---

## Accommodations

---

**Total Cabins:** 2

**Sleeps:** 4

**Total Heads:** 1

---

## Hull and Deck Information

---

**Hull Material:** Fiberglass

---

## Engine Information

---

**Engines:** 1

**Manufacturer:** Perkins

**Engine Type:** Inboard

**Fuel Type:** Diesel

# PHOTOS

0\_2788052\_port\_bow



1\_2788052\_port\_bow



2\_2788052\_starboard\_bow



3\_2788052\_starboard\_gunwale



4\_2788052\_port\_gunwale



5\_2788052\_pilothouse





**6\_2788052\_windless**



**7\_2788052\_bimini**



**8\_2788052\_bow\_pulpit**



**9\_2788052\_**



**10\_2788052\_cockpit**



**11\_2788052\_double\_bench\_seat**





12\_2788052\_



13\_2788052\_



14\_2788052\_



15\_2788052\_



16\_2788052\_



17\_2788052\_



18\_2788052\_



19\_2788052\_



20\_2788052\_



21\_2788052\_



22\_2788052\_



23\_2788052\_





24\_2788052\_



25\_2788052\_



26\_2788052\_



27\_2788052\_



28\_2788052\_



29\_2788052\_



30\_2788052\_



31\_2788052\_



32\_2788052\_



33\_2788052\_



34\_2788052\_



35\_2788052\_





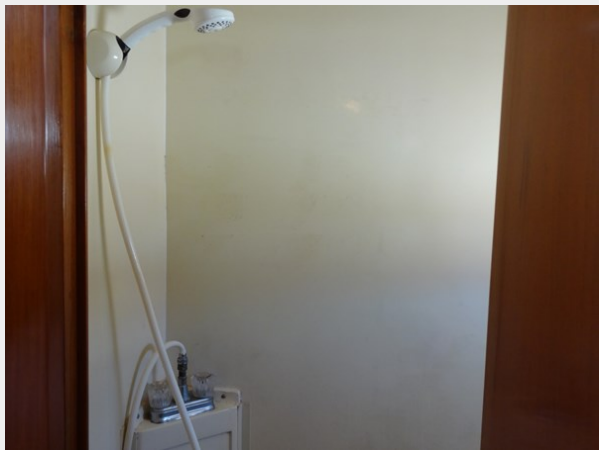
36\_2788052\_



37\_2788052\_



38\_2788052\_



39\_2788052\_



40\_2788052\_



41\_2788052\_



42\_2788052\_



43\_2788052\_



44\_2788052\_



45\_2788052\_



46\_2788052\_



47\_2788052\_

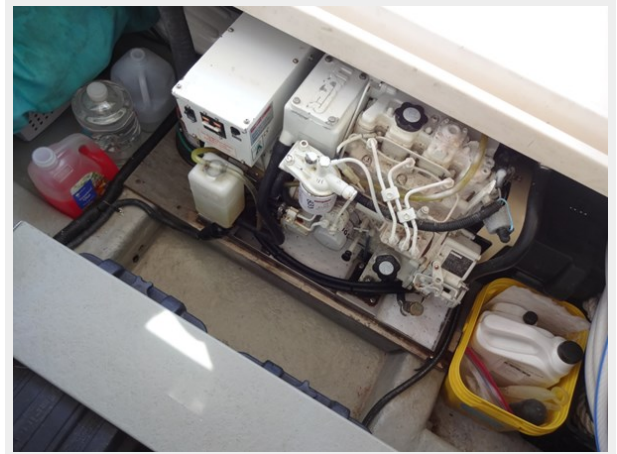




48\_2788052\_



49\_2788052\_



50\_2788052\_



51\_2788052\_



# CONTACTS

---

Andrey Shestakov, leading yacht broker of the sales department of Shestakov Yacht Sales Inc. Shestakov Yacht Sales Inc., the official representative of the Miami/Fort Lauderdale FL headquarters.

## Contact details

---

Email: **andrey@shestakovyachtsales.com**

Web: [shestakovyachtsales.com/en/](http://shestakovyachtsales.com/en/)

## Telephones

---

USA: **+1(954)274-4435**

## Office hours

---

Monday – Saturday: **9:00 - 21:00** EDT

Sunday: **closed**

## Address

---



Harbour Towne Marina, 850 NE 3rd St, STE 213, Dania, FL 33004