

THE DREAM — HINCKLEY



Builder: HINCKLEY

Year Built: 2004

Model: Cruising Yacht

Price: PRICE ON APPLICATION

Location: United States

LOA: 40' 1" (12.22mm)

Beam: 12.41

Max Draft: 2' 2" (0.66mm)

Cruise Speed: 28 Knots Kts. (32 MPH)

Max Speed: 32 Knots Kts. (37 MPH)

Our experienced yacht broker, Andrey Shestakov, will help you choose and buy a yacht that best suits your needs **THE DREAM — HINCKLEY** from **our catalogue**. Presently, at **Shestakov Yacht Sales Inc.**, we have a wide variety of yachts available on **our sale's list**. We also work in close contact with all the big **yacht manufacturers** from all over the world.

If you would like to buy a yacht **THE DREAM — HINCKLEY** or would like help answering any questions concerning purchasing, selling or chartering a yacht, please call **+1(954)274-4435**

TABLE OF CONTENTS

| | |
|------------------------------|---|
| TABLE OF CONTENTS | 2 |
| SPECIFICATIONS | 4 |
| Overview | 4 |
| Basic Information | 4 |
| Dimensions | 4 |
| Speed, Capacities and Weight | 4 |
| Accommodations | 5 |
| Hull and Deck Information | 5 |
| Engine Information | 5 |
| PHOTOS | 6 |
| Transom | 6 |
| Profile | 6 |
| Swim Platform | 6 |
| Boarding | 6 |
| Faux Teak Mast | 7 |
| Aft Settee | 7 |
| Teak Cockpit | 7 |
| Aft Facing Settes | 7 |
| Settes | 7 |
| Pilothouse | 7 |
| Pilothouse | 8 |
| Helm Area | 8 |
| Helm Seat | 8 |
| Helm | 8 |
| Helm | 8 |
| Companionway | 8 |
| Navigation Seat | 9 |
| Port Pilothouse | 9 |

| | |
|-----------------|----|
| Galley | 9 |
| Galley | 9 |
| Head | 9 |
| V Berth | 9 |
| Forward | 10 |
| Port Locker | 10 |
| Solar Panels | 10 |
| Cabin Top | 10 |
| Bow Cushions | 10 |
| CONTACTS | 11 |
| Contact details | 11 |
| Telephones | 11 |
| Office hours | 11 |
| Address | 11 |

SPECIFICATIONS

Overview

PRELIMINARY LISTING - MORE PICTURES TO FOLLOW

“THE DREAM” (Name Reserved) is an extraordinary example of the Hinckley Talaria 40. This Bruce King-designed yacht spends her winters with Hinckley Yacht Services in heated indoor storage enrolled in their comprehensive Winter JetBoat Program. During the summer months, she is maintained by a Captain on Nantucket. In the last 12 months, Hinckley Yacht Services (in conjunction with Martha Coolidge Design) conducted updating to include new fabrics, helm seats, hull paint, and electronics. A few years ago, this low-hour example also received a new Onan Genset. At every turn “The Dream” has seen the best in care. With her incredible hull paint, pedigree, and good looks, she will turn heads in every port of call. Please delve into the specifications to see why “The Dream” is so special.

Basic Information

Category: Cruising Yacht

Model Year: 2004

Year Built: 2004

Country: United States

Dimensions

LOA: 40' 1" (12.22mm)

LWL: 37' 1" (11.3mm)

Beam: 12.41

Max Draft: 2' 2" (0.66mm)

Speed, Capacities and Weight

Cruise Speed: 28 Knots Kts. (32 MPH) **Max Speed:** 32 Knots Kts. (37 MPH)

Water Capacity: 80 Gallons

Holding Tank: 35 Gal Gallons

Fuel Capacity: 340 Gal Gallons

Accommodations

Total Cabins: 1

Total Heads: 1

Hull and Deck Information

Hull Material: Kevlar Composite

Engine Information

Engines: 2

Manufacturer: Yanmar

Engine Type: Inboard

Fuel Type: Diesel

PHOTOS

Profile



Transom



Swim Platform



Boarding



Faux Teak Mast



Aft Settee



Teak Cockpit



Aft Facing Settes



Settes



Pilothouse



Pilothouse



Helm Area



Helm Seat



Helm



Helm



Companionway



Navigation Seat



Port Plothouse



Galley



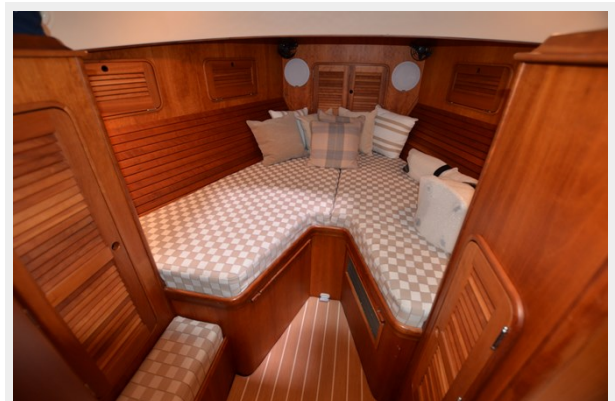
Galley



Head



V Berth



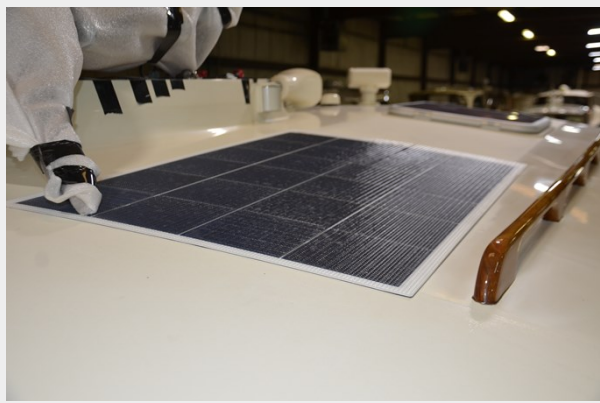
Forward



Port Locker



Solar Panels



Cabin Top



Bow Cushions



CONTACTS

Andrey Shestakov, leading yacht broker of the sales department of Shestakov Yacht Sales Inc. Shestakov Yacht Sales Inc., the official representative of the Miami/Fort Lauderdale FL headquarters.

Contact details

Email: **andrey@shestakovyachtsales.com**

Web: shestakovyachtsales.com/en/

Telephones

USA: **+1(954)274-4435**

Office hours

Monday – Saturday: **9:00 - 21:00** EDT

Sunday: **closed**

Address



Harbour Towne Marina, 850 NE 3rd St, STE 213, Dania, FL 33004