

BEN'S BARGE — MARLOW



Builder: MARLOW

Year Built: 2014

Model: Motor Yacht

Price: PRICE ON APPLICATION

Location: United States

LOA: 79' 9" (24.31mm)

Min Draft: 4' 10" (1.47mm)

Cruise Speed: 20 Knots Kts. (23 MPH)

Max Speed: 26 Knots Kts. (30 MPH)

Our experienced yacht broker, Andrey Shestakov, will help you choose and buy a yacht that best suits your needs **Ben's Barge — MARLOW** from our catalogue. Presently, at Shestakov Yacht Sales Inc., we have a wide variety of yachts available on our sale's list. We also work in close contact with all the big yacht manufacturers from all over the world.

If you would like to buy a yacht **Ben's Barge — MARLOW** or would like help answering any questions concerning purchasing, selling or chartering a yacht, please call **+1(954)274-4435**

TABLE OF CONTENTS

TABLE OF CONTENTS	2
SPECIFICATIONS	5
Basic Information	5
Dimensions	5
Speed, Capacities and Weight	5
Accommodations	5
Hull and Deck Information	5
Engine Information	5
PHOTOS	6
Cocopit looking forward	6
Cockpit looking aft	6
Cockpit looking to port	6
Cockpit looking to starboard	6
Engine Room-Crew Quarter entrance	6
Foredeck looking forward	6
Foredeck looking aft	7
Upper aft deck storage	7
Upper aft deck	7
Upper aft deck docking station	7
Command Bridge day head	7
Command Bridge day head	7
Tender	8
Tender	8
Salon looking forward	8
Salon looking	8
Salon looking to starboard	8
Salon desk (starboard forward)	8
Galley-Dining area	9

Galley looking to starboard	9
Galley	9
Galley-Steps to Command Bridge	9
Dining table looking forward	9
Command Bridge looking forward	9
Command Bridge seating area	10
Command Bridge Helm	10
COmmand Bridge looking aft	10
Helm looking to port	10
Command Bridge refrigerator	10
Command Bridge aft entrance	10
Steps to Companionway-stbd guest statetoom	11
Stbd guest stateroom-Laundry	11
VIP stateroom	11
VIP looking to starboard	11
VIP looking to Port	11
Port guest stateroom looking aft	11
Port guest stateroom looking forward	12
Companionway looking forward	12
Master Stateroom	12
Master stateroom looking to port	12
Master stateroom looking to starboard	12
Master Head	12
Master Stateroom shower	13
Master stateroom looking forward	13
Crew Quarters	13
Crew Quarters-Head	13
Crew Quarters looking forward	13
Entrance to Engine room	13

Engine Room looking forward	14
Engine Room looking aft	14
Ben's Barge	14
CONTACTS	15
Contact details	15
Telephones	15
Office hours	15
Address	15

SPECIFICATIONS

Basic Information

Category: Motor Yacht

Model Year: 2014

Year Built: 2014

Country: United States

Dimensions

LOA: 79' 9" (24.31mm)

Min Draft: 4' 10" (1.47mm)

Speed, Capacities and Weight

Cruise Speed: 20 Knots Kts. (23 MPH)

Max Speed: 26 Knots Kts. (30 MPH)

Gross Tonnage: 84000 Pounds

Water Capacity: 500 Gallons

Holding Tank: 150 Gal Gallons

Fuel Capacity: 3000 Gal Gallons

Accommodations

Total Cabins: 4

Hull and Deck Information

Hull Material: Fiberglass

Engine Information

Engines: 2

Manufacturer: Caterpillar

PHOTOS

Cocopit looking forward



Cockpit looking aft



Cockpit looking to port



Cockpit looking to starboard



Engine Room-Crew Quarter entrance



Foredeck looking forward



Foredeck looking aft



Upper aft deck storage



Upper aft deck



Upper aft deck docking station



Command Bridge day head



Command Bridge day head



Tender



Tender



Salon looking forward



Salon looking



Salon looking to starboard



Salon desk (starboard forward)



Galley-Dining area



Galley looking to starboard



Galley



Galley-Steps to Command Bridge



Dining table looking forward



Command Bridge looking forward



Command Bridge seating area



Command Bridge Helm



COMmand Bridge looking aft



Helm looking to port



Command Bridge refrigerator



Command Bridge aft entrance



Stbd guest stateroom-Laundry



Steps to Companionway-stbd guest stateroom



VIP stateroom



VIP looking to starboard



VIP looking to Port



Port guest stateroom looking aft



Port guest stateroom looking forward



Companionway looking forward



Master Stateroom



Master stateroom looking to port



Master stateroom looking to starboard



Master Head



Master Stateroom shower



Master stateroom looking forward



Crew Quarters



Crew Quarters-Head



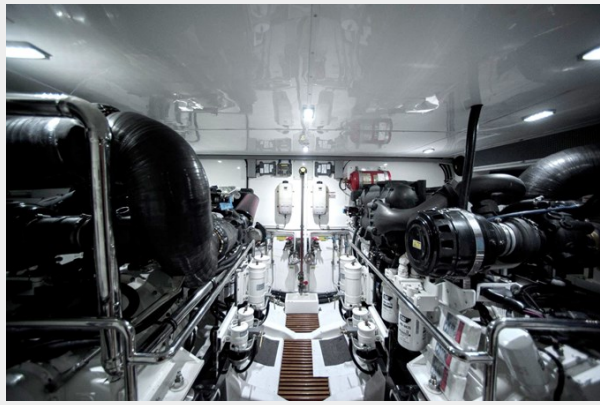
Crew Quarters looking forward



Entrance to Engine room



Engine Room looking forward



Engine Room looking aft



Ben's Barge



CONTACTS

Andrey Shestakov, leading yacht broker of the sales department of Shestakov Yacht Sales Inc. Shestakov Yacht Sales Inc., the official representative of the Miami/Fort Lauderdale FL headquarters.

Contact details

Email: andrey@shestakovyachtsales.com

Web: shestakovyachtsales.com/en/

Telephones

USA: +1(954)274-4435

Office hours

Monday – Saturday: **9:00 - 21:00** EDT

Sunday: **closed**

Address



Harbour Towne Marina, 850 NE 3rd St,
STE 213, Dania, FL 33004