

NOE — GUY COUACH



Builder: GUY COUACH

Year Built: 2013

Model: Convertible

Price: PRICE ON APPLICATION

Location: France

LOA: 93' 10" (28.6m)

Beam: 21.32

Max Draft: 4' 4" (1.3m)

Cruise Speed: 28 Knots Kts. (32 MPH)

Max Speed: 34 Knots Kts. (39 MPH)

Our experienced yacht broker, Andrey Shestakov, will help you choose and buy a yacht that best suits your needs **NOE — GUY COUACH** from our catalogue. Presently, at Shestakov Yacht Sales Inc., we have a wide variety of yachts available on our sale's list. We also work in close contact with all the big yacht manufacturers from all over the world.

If you would like to buy a yacht **NOE — GUY COUACH** or would like help answering any questions concerning purchasing, selling or chartering a yacht, please call **+1(954)274-4435**

TABLE OF CONTENTS

TABLE OF CONTENTS	2
SPECIFICATIONS	4
Overview	4
Basic Information	4
Dimensions	4
Speed, Capacities and Weight	4
Accommodations	4
Hull and Deck Information	5
Engine Information	5
PHOTOS	6
Noé - Guy COUACH 2800 Open - 2013	6
Top speed of 34 Knots	6
Williams 4.5 T/T	6
Main Deck modern interior	6
Lower Deck hallway, serving VIP's head (on the left) and toilets (on the right)	7
VIP stateroom (at the bow)	7
Double cabin #1	7
Double cabin's head #1	7
Double cabin #2	8
VIP's head	8
Master Suite	8
Master Suite	8
Master Suite	9
Master's head	9
Master's shower	9
Galley	9
Galley / laundry	10
Crew quarters	10

Exterior alleyway	10
Crew quarters	10
CONTACTS	11
Contact details	11
Telephones	11
Office hours	11
Address	11

SPECIFICATIONS

Overview

Noé combines a sporty exterior and a bright welcoming interior that will make you feel on a much larger boat. Her planning hull has been designed for performance, offering to Noé an outstanding seaworthiness behavior. Built on-order by Couach shipyard in 2013, Noé has since been exploring the Med with only her experienced owner and his captain; she's entering the market in immaculate condition.

Basic Information

Category: Convertible

Sub Category: Convertible

Model Year: 2013

Year Built: 2013

Country: France

Dimensions

LOA: 93' 10" (28.6mm)

Beam: 21.32

Max Draft: 4' 4" (1.3mm)

Speed, Capacities and Weight

Cruise Speed: 28 Knots Kts. (32 MPH)

Max Speed: 34 Knots Kts. (39 MPH)

Water Capacity: 2000 Gallons

Fuel Capacity: 2245.46 Gal Gallons

Accommodations

Total Cabins: 4

Total Berths: 8

Sleeps: 8

Total Heads: 4

Crew Cabin: 2

Crew Heads: 1

Hull and Deck Information

Hull Material: Kevlar Composite

Deck Material: Teak over Fiberglass

Hull Configuration: Planing

Hull Color: Cream White

Engine Information

Engines: 2

Manufacturer: MTU

Engine Type: Inboard

Fuel Type: Diesel

PHOTOS

Noé - Guy COUACH 2800 Open - 2013



Top speed of 34 Knots



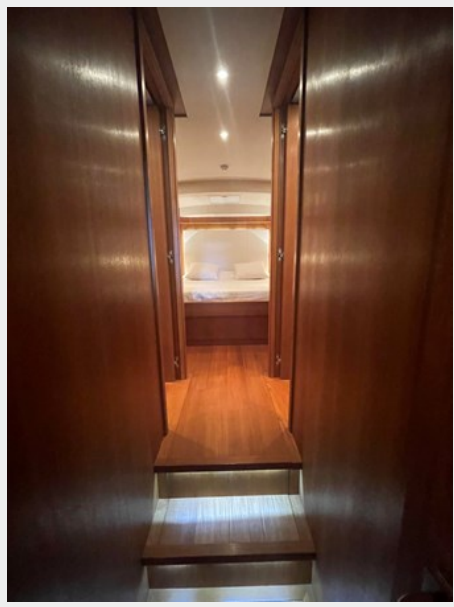
Main Deck modern interior



Williams 4.5 T/T



Lower Deck hallway, serving VIP's head (on the left) and toilets (on the right)



VIP stateroom (at the bow)



Double cabin #1



Double cabin's head #1



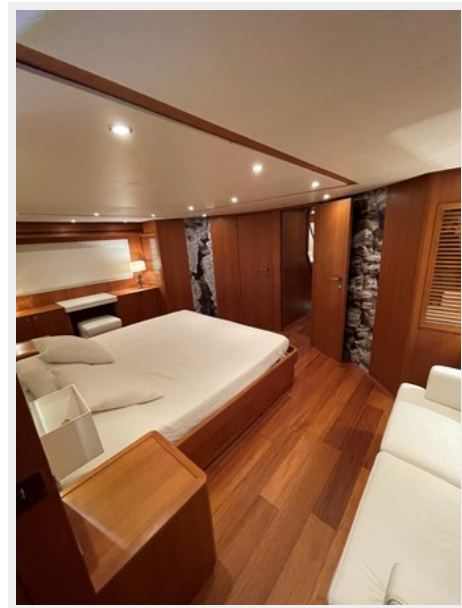
Double cabin #2



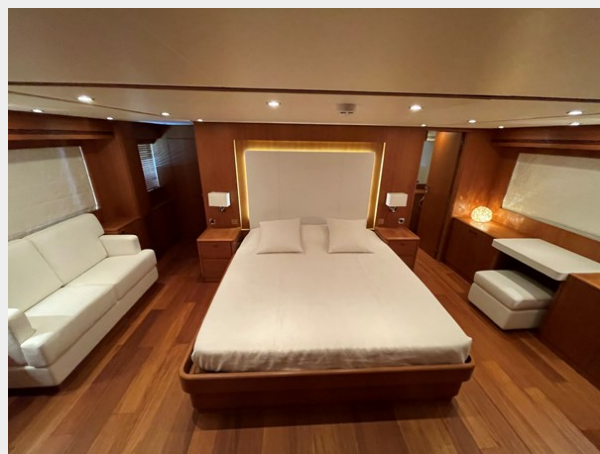
VIP's head



Master Suite



Master Suite



Master Suite



Master's head



Master's shower



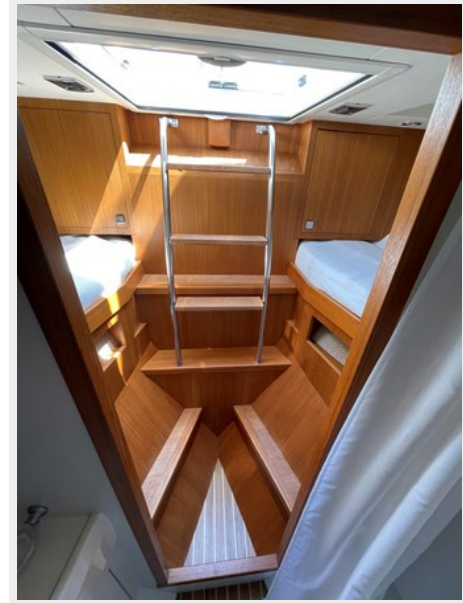
Galley



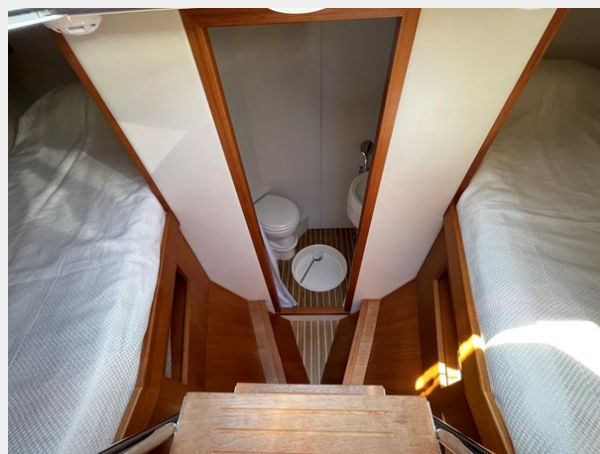
Galley / laundry



Crew quarters



Crew quarters



Exterior alleyway



CONTACTS

Andrey Shestakov, leading yacht broker of the sales department of Shestakov Yacht Sales Inc. Shestakov Yacht Sales Inc., the official representative of the Miami/Fort Lauderdale FL headquarters.

Contact details

Email: andrey@shestakovyachtsales.com

Web: shestakovyachtsales.com/en/

Telephones

USA: +1(954)274-4435

Office hours

Monday – Saturday: **9:00 - 21:00** EDT

Sunday: **closed**

Address



Harbour Towne Marina, 850 NE 3rd St,
STE 213, Dania, FL 33004