

COMPASS ROSE — MAINSHIP



Builder: MAINSHIP

Year Built: 2004

Model: Cruising Yacht

Price: PRICE ON APPLICATION

Location: United States

LOA: 30' (9.14mm)

Beam: 10.25

Max Draft: 2' 6" (0.76mm)

Our experienced yacht broker, Andrey Shestakov, will help you choose and buy a yacht that best suits your needs **Compass Rose — MAINSHIP** from our catalogue. Presently, at Shestakov Yacht Sales Inc., we have a wide variety of yachts available on our sale's list. We also work in close contact with all the big yacht manufacturers from all over the world.

If you would like to buy a yacht **Compass Rose — MAINSHIP** or would like help answering any questions concerning purchasing, selling or chartering a yacht, please call **+1(954)274-4435**

TABLE OF CONTENTS

| | |
|------------------------------------|----|
| TABLE OF CONTENTS | 2 |
| SPECIFICATIONS | 5 |
| Overview | 5 |
| Basic Information | 5 |
| Dimensions | 5 |
| Speed, Capacities and Weight | 5 |
| Accommodations | 5 |
| Hull and Deck Information | 5 |
| Engine Information | 6 |
| PHOTOS | 7 |
| 8289695_20220420061109461_1_XLARGE | 7 |
| 8289695_20220420061203032_1_XLARGE | 7 |
| 8289695_20220420062625498_1_XLARGE | 7 |
| 8289695_20220420061234029_1_XLARGE | 7 |
| 8289695_20220420062428071_1_XLARGE | 8 |
| 8289695_20220420062242479_1_XLARGE | 8 |
| 8289695_20220420061322098_1_XLARGE | 8 |
| 8289695_20220420061553149_1_XLARGE | 8 |
| 8289695_20220420062134273_1_XLARGE | 8 |
| 8289695_20220420061825124_1_XLARGE | 8 |
| 8289695_20220420063204677_1_XLARGE | 9 |
| 8289695_20220420062909937_1_XLARGE | 9 |
| 8289695_20220420063333735_1_XLARGE | 9 |
| 8289695_20220420064115128_1_XLARGE | 9 |
| 8289695_20220420063640682_1_XLARGE | 9 |
| 8289695_20220420063601066_1_XLARGE | 9 |
| 8289695_20220420063754265_1_XLARGE | 10 |
| 8289695_20220420064030717_1_XLARGE | 10 |

| | |
|------------------------------------|----|
| 8289695_20220420064248597_1_XLARGE | 10 |
| 8289695_20220420064632751_1_XLARGE | 10 |
| 8289695_20220420064447427_1_XLARGE | 10 |
| 8289695_20220420064700445_1_XLARGE | 10 |
| 8289695_20220420065647298_1_XLARGE | 11 |
| 8289695_20220420065027443_1_XLARGE | 11 |
| 8289695_20220420064726073_1_XLARGE | 11 |
| 8289695_20220420064752854_1_XLARGE | 11 |
| 8289695_20220420064957770_1_XLARGE | 11 |
| 8289695_20220420064821592_1_XLARGE | 11 |
| 8289695_20220420065619376_1_XLARGE | 12 |
| 8289695_20220420065436720_1_XLARGE | 12 |
| 8289695_20220420065359066_1_XLARGE | 12 |
| 8289695_20220420065217282_1_XLARGE | 12 |
| 8289695_20220420070816461_1_XLARGE | 12 |
| 8289695_20220420070531594_1_XLARGE | 12 |
| 8289695_20220420070322332_1_XLARGE | 13 |
| 8289695_20220420065838905_1_XLARGE | 13 |
| 8289695_20220420065815186_1_XLARGE | 13 |
| 8289695_20220420065903089_1_XLARGE | 13 |
| 8289695_20220420065927106_1_XLARGE | 13 |
| 8289695_20220420065745359_1_XLARGE | 13 |
| 8289695_20220420070616400_1_XLARGE | 14 |
| 8289695_20220420070711825_1_XLARGE | 14 |
| 8289695_20220420070104540_1_XLARGE | 14 |
| 8289695_20220420065711636_1_XLARGE | 14 |
| 8289695_20220420070943066_1_XLARGE | 14 |
| 8289695_20220420070742149_1_XLARGE | 14 |
| 8289695_20220420071630693_1_XLARGE | 15 |

| | |
|------------------------------------|----|
| 8289695_20220420071710122_1_XLARGE | 15 |
| 8289695_20220420071102608_1_XLARGE | 15 |
| 8289695_20220420071142419_1_XLARGE | 15 |
| 8289695_20220420071025974_1_XLARGE | 15 |
| 8289695_20220420071358311_1_XLARGE | 15 |
| CONTACTS | 16 |
| Contact details | 16 |
| Telephones | 16 |
| Office hours | 16 |
| Address | 16 |

SPECIFICATIONS

Overview

Fighting Lady Yellow Hull, Preferred 315hp Yanmar with under 560hrs, Bow Thruster, Bimini Top with 3 Sided Enclosure and Aft Cockpit Extension, Stainless Steel Radar Arch, Electric Windlass, Lift Kept, None Nicer, It Is a "9"

Basic Information

Category: Cruising Yacht

Sub Category: Downeast

Model Year: 2004

Year Built: 2004

Country: United States

Dimensions

LOA: 30' (9.14mm)

Beam: 10.25

Max Draft: 2' 6" (0.76mm)

Speed, Capacities and Weight

Water Capacity: 40 Gallons

Holding Tank: 20 Gal Gallons

Fuel Capacity: 175 Gal Gallons

Accommodations

Total Cabins: 1

Hull and Deck Information

Hull Material: Fiberglass

Engine Information

Engines: 1

Manufacturer: Yanmar

Engine Type: Inboard

Fuel Type: Diesel

PHOTOS

8289695_20220420061109461_1_XLARGE



8289695_20220420061203032_1_XLARGE



8289695_20220420062625498_1_XLARGE

8289695_20220420061234029_1_XLARGE



8289695_20220420062428071_1_XLARGE



8289695_20220420062242479_1_XLARGE



8289695_20220420061322098_1_XLARGE



8289695_20220420061553149_1_XLARGE



8289695_20220420062134273_1_XLARGE



8289695_20220420061825124_1_XLARGE



8289695_20220420063204677_1_XLARGE



8289695_20220420062909937_1_XLARGE



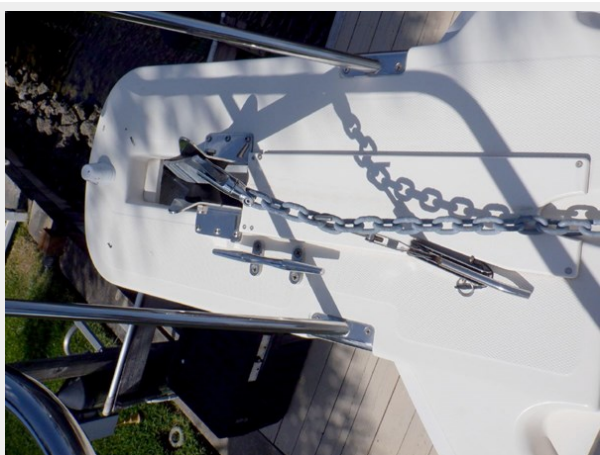
8289695_20220420063333735_1_XLARGE



8289695_20220420064115128_1_XLARGE



8289695_20220420063640682_1_XLARGE



8289695_20220420063601066_1_XLARGE



8289695_20220420063754265_1_XLARGE



8289695_20220420064030717_1_XLARGE



8289695_20220420064248597_1_XLARGE



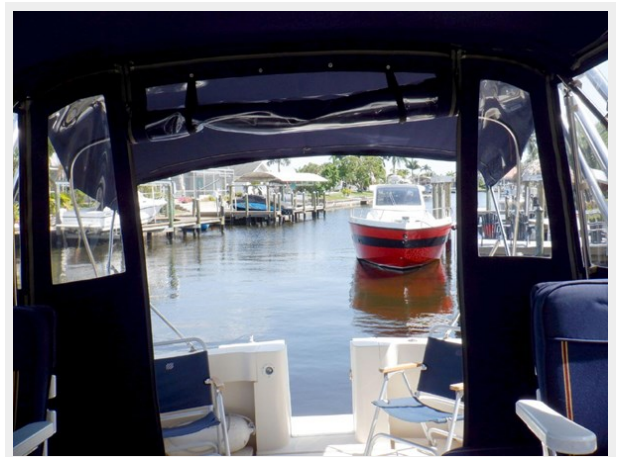
8289695_20220420064632751_1_XLARGE



8289695_20220420064447427_1_XLARGE



8289695_20220420064700445_1_XLARGE



8289695_20220420065647298_1_XLARGE



8289695_20220420065027443_1_XLARGE



8289695_20220420064726073_1_XLARGE



8289695_20220420064752854_1_XLARGE



8289695_20220420064957770_1_XLARGE



8289695_20220420064821592_1_XLARGE



8289695_20220420065619376_1_XLARGE



8289695_20220420065436720_1_XLARGE



8289695_20220420065359066_1_XLARGE



8289695_20220420065217282_1_XLARGE



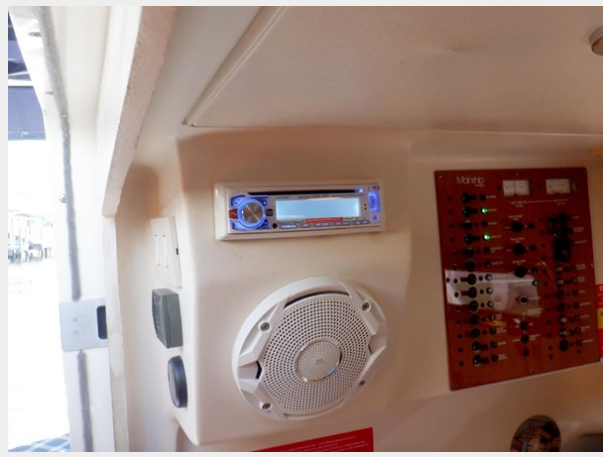
8289695_20220420070816461_1_XLARGE



8289695_20220420070531594_1_XLARGE



8289695_20220420070322332_1_XLARGE



8289695_20220420065838905_1_XLARGE



8289695_20220420065815186_1_XLARGE



8289695_20220420065903089_1_XLARGE



8289695_20220420065927106_1_XLARGE



8289695_20220420065745359_1_XLARGE



8289695_20220420070616400_1_XLARGE



8289695_20220420070711825_1_XLARGE



8289695_20220420070104540_1_XLARGE



8289695_20220420065711636_1_XLARGE



8289695_20220420070943066_1_XLARGE



8289695_20220420070742149_1_XLARGE



8289695_20220420071630693_1_XLARGE



8289695_20220420071710122_1_XLARGE



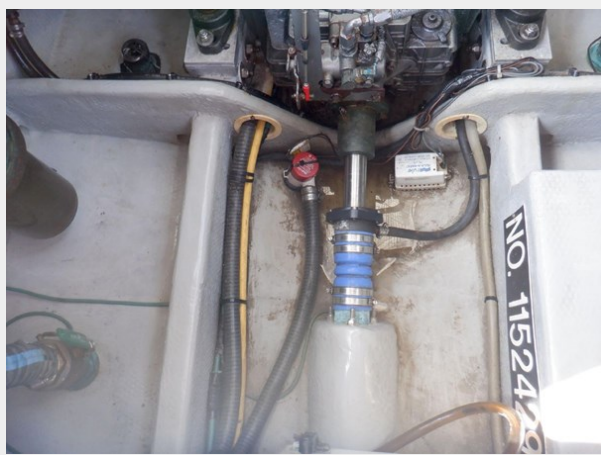
8289695_20220420071102608_1_XLARGE



8289695_20220420071142419_1_XLARGE



8289695_20220420071025974_1_XLARGE



8289695_20220420071358311_1_XLARGE



CONTACTS

Andrey Shestakov, leading yacht broker of the sales department of Shestakov Yacht Sales Inc. Shestakov Yacht Sales Inc., the official representative of the Miami/Fort Lauderdale FL headquarters.

Contact details

Email: andrey@shestakovyachtsales.com

Web: shestakovyachtsales.com/en/

Telephones

USA: +1(954)274-4435

Office hours

Monday – Saturday: **9:00 - 21:00** EDT

Sunday: **closed**

Address



Harbour Towne Marina, 850 NE 3rd St,
STE 213, Dania, FL 33004