

HARBOR VIEW — GRAND BANKS



Builder: GRAND BANKS

Year Built: 2006

Model: Cruising Yacht

Price: PRICE ON APPLICATION

Location: United States

LOA: 49' (14.94mm)

Beam: 16

Max Draft: 4' 4" (1.32mm)

Our experienced yacht broker, Andrey Shestakov, will help you choose and buy a yacht that best suits your needs **Harbor View — GRAND BANKS** from our catalogue. Presently, at Shestakov Yacht Sales Inc., we have a wide variety of yachts available on our sale's list. We also work in close contact with all the big yacht manufacturers from all over the world.

If you would like to buy a yacht **Harbor View — GRAND BANKS** or would like help answering any questions concerning purchasing, selling or chartering a yacht, please call **+1(954)274-4435**

TABLE OF CONTENTS

TABLE OF CONTENTS	2
SPECIFICATIONS	6
Overview	6
Basic Information	10
Dimensions	10
Speed, Capacities and Weight	10
Accommodations	11
Hull and Deck Information	11
Engine Information	11
PHOTOS	12
DJI_0436	12
DJI_0271	12
DJI_0493	12
DJI_0250	12
DJI_0490	12
DJI_0186	12
DJI_0483	13
DJI_0439	13
DJI_0488	13
DSC_0718	13
DSC_0725	13
DSC_0747	13
DSC_0757	14
DSC_0799	14
DSC_0763	14
DSC_0840-Edit	14
DSC_0862-Edit	14
DSC_0833	14

DSC_0881	15
DSC_0871	15
DSC_0875-Edit	15
DSC_1045	15
DSC_0891	15
DSC_1042	15
DSC_0928	16
DSC_0933	16
DSC_0937	16
DSC_1039	16
DSC_1010	16
DSC_1008	16
DSC_1019	17
DSC_0988	17
DSC_1031	17
DSC_1029	17
DSC_0983	17
DSC_0978	17
DSC_0997	18
DSC_0949	18
DSC_0646	18
DSC_0606	18
DSC_0659	18
DSC_0661	18
DSC_0629	19
DSC_0670	19
DSC_0633	19
DSC_0701-2-Edit	19
DSC_0497	19

DSC_0479	19
DSC_0455	20
DSC_0461	20
DSC_0493	20
DSC_0501	20
DSC_0343-2-Edit	20
DSC_0334	20
DSC_0358-Edit	21
DSC_0413	21
DSC_0365	21
DSC_0407	21
DSC_0404	21
DSC_0539	21
DSC_0522	22
DSC_0551	22
DSC_0555	22
DSC_0569-Edit	22
DSC_0581-Edit	22
DSC_0600-Edit	22
DSC_0509-Edit	23
DSC_0506	23
DSC_0323-Edit	23
DSC_0434	23
DSC_1062	23
DSC_1066	23
DSC_1069	24
CONTACTS	25
Contact details	25
Telephones	25

Office hours 25

Address 25

SPECIFICATIONS

Overview

Reduced over 100K! Winter stored in an indoor heated building and close to Grand Rapids airport (GRR), showings can easily be accommodated

Loaded with factory customizations, stored in a freshwater boat house for the last ten years, and in incredible shape, Harbor View is not only the best available late model 49HX on the market today, but the best in quite some time.

The **Grand Banks 49 Eastbay** is known for its **incredibly soft ride, stout build quality, and iconic down east styling. Wide walkways, a massive cockpit, and the open HX helm deck layout** make the boat as comfortable cruising as it is entertaining, with enough room to comfortably host a small crowd. With a **hull design by the famous Raymond Hunt, an 18 degree deadrise, and a 16' beam**, the boat is a true blue water performer and rides **comfortably in sea conditions where other similarly sized boats do not.**

Harbor View is a true gentleman's boat. With beautiful down east lines that give the feel of classic yachting, **but the build quality and attention to detail** more often found on high-end sportfishing boats. Customized from day one and having called the Great Lakes home for the last ten years and fresh out of heated winter storage, **Harbor View will not last and is ready for immediate delivery.**

Harbor View was ordered from Grand Banks with an **incredible level of customizations**, from **custom stateroom arrangements down to the type of grout used for the tile shower floors.** It has lived it's last **10 years in a boat house on the Great Lakes, and stored in heated storage during the winter.** This is evident immediately when stepping on board as the boat shows more like a 2016 than a 2006. **Below is a list of significant customizations, features, options, and upgrades:**

- **Custom enlarged master stateroom**
- **Spare propellers**
- **Complete electronics package:**
 - Garmin 4212 chartplotter with satellite weather receiver (2012)
 - 2x Furuno NavNet VX2 chartplotters with radar and sonar
 - Raymarine ST290 displays (2x) with wind reader and wired remote
 - KVH Satellite TV dome
 - Simrad AP26 Autopilot with wired remote
 - Standard Horizon GX230S VHF
 - Bennett hydraulic trim tab controls with indicators
 - MaxPower bow thruster control
- **Subzero stainless steel refrigerator and freezer (2012)**
- **Fresh engine, generator, and transmission service: (2021)**

- Oil (engines and generator)
- Oil filter (engines and generator)
- Transmission filter
- Secondary fuel filters (engines and generator)
- Primary fuel filters (engine and generator)
- **Fusion UD650 Stereo** (2015)
- **Ocean LED underwater lights** (2x), blue and white (2012)
- Upgraded TV in master (2012)
- New curtain tie backs (2014)
- **Mezzanine and bow sunpad reupholstered in Sunbrella** (2012)
- **Powerful airhorn installed** (2019)
- Spotlight (2017)
- **Removeable EZ2CY aft helm deck enclosure with storage bag for door panel** (2018)
- **AB tender with Yamaha 15HP 2-stroke outboard, removeable bench seats, and locking hardware mounted on swim platform** (2006)
- **Customized helm and companion bench seats:**
 - Backrests can be arranged to face forward or aft to face starboard and port helm deck seating
 - Folding teak footrests on either side, for facing aft or forward
- **Guest stateroom customization**
 - Criss crossing top and bottom bunks – results in much longer and wider lower bunk
 - Stacking Asko separate washer and dryer units behind teak louvered doors
 - Hanging locker under top bunk
- **Customized bottle storage in galley**
- **Customized helm deck bar:**
 - Installed shelf 6” from top to helm bar
 - Cutouts for shorter tumblers (10x) and taller tumblers (4x)
- **Customized galley for increased storage**
- **Grand Banks installed, owner supplied:**
 - Custom European lighting fixtures throughout
 - Stainless steel sinks in master head, guest head, and double sink in galley
 - Basin mixer
 - All shower hardware in both showers (shower head, shower mixer chrome shower hose, etc.)
 - Light rail above mirrors in both heads
 - Pull out faucet in galley
 - Electric high-low table pedestal for helm deck table
 - All deck fills for fuel, water, and pump out
- **Split air conditioning throughout** – all compressors (4x) located in engine room, resulting in an incredibly quiet system below deck and in the helm deck
- **Dimmable lights throughout** (master stateroom, guest stateroom, salon, galley, and helm deck)
- **Sprayed Awlgrip beige nonskid on all exterior decking**
- **Teak and Holly flooring** throughout with free standing, bound carpet

- Lift mechanism for under master bed
- Additional 110V outlets placed strategically throughout the boat
- **Hot and cold transom shower with 10' hose**
- **Both salt and freshwater spigot in cockpit and anchor locker**
- **Varnished extra large flag pole and holder on transom for true 3' x 5' flag**
- **U-Line icemaker in cockpit**
- Hidden TV in salon
- Custom soft goods throughout
- **75' power cord for cable master**
- **AC and DC powered engine room lights**
- Electric, opening middle windshield
- **Prepped for water maker install**
- Satin varnished slats for in floor storages, engine room, and lazarette storage
- Solar powered dorade vents in guest head and guest stateroom
- Hidden safe in salon
- Increased teak accents throughout cabin
- **Teak decking in helm deck**
- Oil change pump
- **Air conditioning vents in both heads**
- Folding teak bench seat in master shower
- Pneumatic lifts for under salon seating

The boat boasts an **extremely accessible foredeck**. Stainless grab handles on the superstructure, coupled with the bow rails, makes it very easy to access the bow via the extra wide walkways. **The superstructure**, also painted in non-skid makes it easy to access the **double wide sunpad**. **Tall, double stanchioned bow and side rails** keep kids and pets safe while accessing, or enjoying the bow.

The **cockpit** can host a small together with it's completely **open floorplan and 16' beam**. A stout **opening dive door** can lock in the open position, making access to the **teak swim platform** extremely easy. **Mezzanine seating** gives a great view while underway, or nice spot to socialize at rest. The inboard part of the mezzanine lifts to **reveal day access to the engine room**.

A city water inlet, hot/cold transom shower, and raw water hookup are flanked by an **outdoor 110V outlet, and rod holders**. The **hidden shore power outlet** under the port cockpit steps keep clean lines, while a **manual bilge pump** provides extra safety and is found on the starboard side cockpit steps.

The **teak-laid helm deck** can be separated from the cockpit for cruising or storage via a four-piece, **removeable EZ2CY enclosure** with a storage bag for the door panel, when removed. **L shaped port side seating** is complimented by an **electric, high-low table** for dining or lowered to any desired position easily, with a switch within reach from the seating position. Another **bench seat sits on the starboard side**. Storage is ample underneath both the starboard side bench seat and port side L-shaped lounge. The starboard side aft console is perfect for a **future cockpit TV installation** with a weather proof 110V outlet and coax hookup.

The **double wide helm bench** seat is truly capable of two sitting next to each other with room to spare. An **equally sized companion bench** seat sits to port. Both **teak ladderback backrests** can be slid from the forward facing position to the aft facing position, giving **four seating areas in the helm deck**, all facing each other. **Teak folding footrests** for the forward or aft position, make the tall helm and companion seats comfortable with the backrests in either direction. **A port side bar** with pullout, felt lined, teak drawers and bottle storage add to the classic down east styling. For cocktails, the **U-line icemaker** is located on the inboard side of the companion bench seat and looks completely in place with a varnished teak door.

A **large engine room access hatch** is located in the middle of the helm deck, for lowering and retrieving bulky items and more involved repairs. A **teak chart box, overhead chart light (red/white), Wheems and Plath barometer, and an oversized compass** give the feel of classic yachting while the modern helm provides all the **contemporary navigation instruments desired in today's age**. See the **features list**, above for a full compliment of electronics.

Large sliding windows on both sides of the forward helm deck (with screens), coupled with **overhead Bomar hatches** (with locking arms), and an **electrically opening center windshield** provide all the airflow desired while underway. It also gives incredible visibility when docking starboard side too, the captain can simply put their head out the window and have **unparalleled sight lines of the starboard side**. A **truly timeless teak locking door** gives access to below deck.

The **U-shaped galley** sits to port, featuring a **double sink, a newer (2012) subzero refrigerator and freezer (freezer is half refrigerator, half freezer), and microwave**. The sink area was customized with a **pullout faucet with stream or shower setting and a secondary purified faucet** that passes water through a secondary water filter (also used for helm deck icemaker). The galley was customized from the factory **to amplify the storage at every level** – overhead, counter level, and lower level.

The **C-shaped salon sofa** is upholstered in beautiful cream ultra leather. It sits opposite a teak cabinet with sliding door **to reveal a salon TV** and hide it when not in use. On par with the rest of the boat, storage is vast, including **customized pneumatic lifts for storage under the sofa**.

The **guest stateroom** was also customized by Grand Banks for the original owner. Instead of the customary side-by-side bunks, **the berths were arranged in a crisscross top and bottom layout**. By doing this, the lower bunk was able to be **widened to be more in line with traditional bed sizes**. The other benefit of this layout is an **enlarged master stateroom**, while still allowing companionway access to separate **Asko washer and dryer units**, hidden behind teak louvered doors.

The **day head** sits forward of the salon, to starboard. **Hidden outlets, a switch for the vacuum head system, and a TankSentry waste tank gauge** are hidden behind the backsplash with a sliding cabinet. An **overhead shower rail and curtain convert the day head to a shower**, complete with **removeable shower head and teak grate**.

The master stateroom sits forward, with beautiful **teak planked walls**. An **enlarged Bomar**

deck hatch serves as a secondary escape and an **escape ladder** is hidden behind the stateroom door. Beautiful appointments highlight the build quality of Grand Banks in the form of **cedar linked, teak louvered closets, several drawers, and an oversized mirror on the aft bulkhead.**

Ensuite access to the **master head** is found on the port side. **A teak folding bench seat** is situated in the shower, along with an incredible amount of storage for towels and toiletries seldom found on this size boat.

Harbor View is a true gentleman's boat. With beautiful down east lines that give the feel of classic yachting, but the build quality and attention to detail more often found on high-end sportfishing boats. Customized from day one and having called the Great Lakes home for the last ten years, fresh out of heated winter storage, Harbor View will not last and is ready for immediate delivery.

*Note: the boat is located offsite, please call ahead to arrange a viewing.

Basic Information

Category: Cruising Yacht

Sub Category: Downeast

Model Year: 2006

Year Built: 2006

Country: United States

Dimensions

LOA: 49' (14.94mm)

LWL: 45' 8" (13.92mm)

Beam: 16

Max Draft: 4' 4" (1.32mm)

Speed, Capacities and Weight

Water Capacity: 176 Gallons

Holding Tank: 80 Gal Gallons

Fuel Capacity: 760 Gal Gallons

Accommodations

Total Cabins: 2

Total Berths: 4

Sleeps: 5

Total Heads: 2

Hull and Deck Information

Hull Material: Fiberglass

Deck Material: Fiberglass

Hull Configuration: Modified Deep Vee

Hull Color: Sea Mist

Hull Designer: Raymond Hunt

Engine Information

Engines: 2

Manufacturer: Caterpillar

Engine Type: Inboard

Fuel Type: Diesel

PHOTOS

DJI_0436



DJI_0271



DJI_0493



DJI_0250



DJI_0490



DJI_0186



DJI_0483



DJI_0439



DJI_0488



DSC_0718



DSC_0725



DSC_0747



DSC_0757



DSC_0799



DSC_0763



DSC_0840-Edit



DSC_0862-Edit



DSC_0833



DSC_0881



DSC_0871



DSC_0875-Edit



DSC_1045



DSC_0891



DSC_1042



DSC_0928



DSC_0933



DSC_0937



DSC_1039



DSC_1010



DSC_1008



DSC_1019



DSC_0988



DSC_1031



DSC_1029



DSC_0983



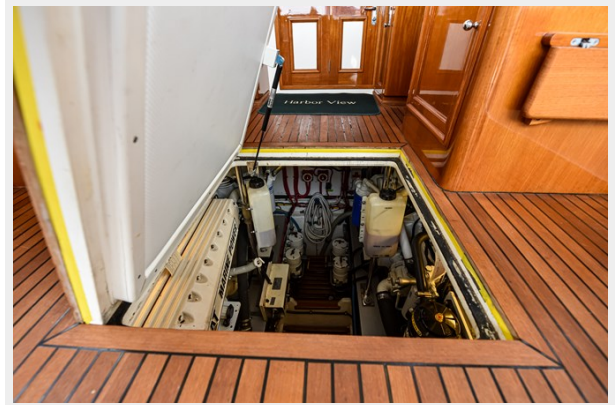
DSC_0978



DSC_0997



DSC_0949



DSC_0646



DSC_0606



DSC_0659



DSC_0661



DSC_0629



DSC_0670



DSC_0633



DSC_0701-2-Edit



DSC_0497



DSC_0479



DSC_0455



DSC_0461



DSC_0493



DSC_0501



DSC_0343-2-Edit



DSC_0334



DSC_0358-Edit



DSC_0413



DSC_0365



DSC_0407



DSC_0404



DSC_0539



DSC_0522



DSC_0551



DSC_0555



DSC_0569-Edit



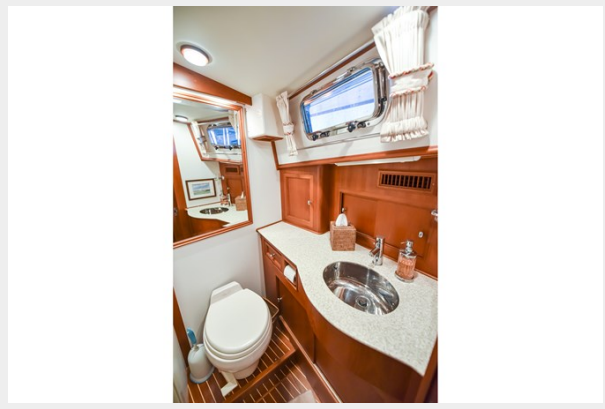
DSC_0581-Edit



DSC_0600-Edit



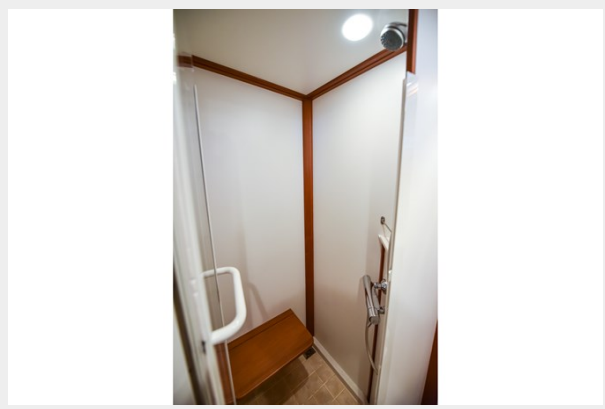
DSC_0509-Edit



DSC_0506



DSC_0323-Edit



DSC_0434



DSC_1062



DSC_1066



DSC_1069



CONTACTS

Andrey Shestakov, leading yacht broker of the sales department of Shestakov Yacht Sales Inc. Shestakov Yacht Sales Inc., the official representative of the Miami/Fort Lauderdale FL headquarters.

Contact details

Email: andrey@shestakovyachtsales.com

Web: shestakovyachtsales.com/en/

Telephones

USA: +1(954)274-4435

Office hours

Monday – Saturday: **9:00 - 21:00** EDT

Sunday: **closed**

Address



Harbour Towne Marina, 850 NE 3rd St,
STE 213, Dania, FL 33004