

SON-LIGHT — COM PAC



Builder: COM PAC

Year Built: 1997

Model: Sloop

Price: PRICE ON APPLICATION

Location: United States

LOA: 23' (7.01mm)

Beam: 7.83

Min Draft: 2' 3" (0.69mm)

Max Draft: 2' 3" (0.69mm)

Cruise Speed: 6 Knots Kts. (7 MPH)

Max Speed: 6 Knots Kts. (7 MPH)

Our experienced yacht broker, Andrey Shestakov, will help you choose and buy a yacht that best suits your needs **Son-Light — COM PAC** from our catalogue. Presently, at Shestakov Yacht Sales Inc., we have a wide variety of yachts available on our sale's list. We also work in close contact with all the big yacht manufacturers from all over the world.

If you would like to buy a yacht **Son-Light — COM PAC** or would like help answering any questions concerning purchasing, selling or chartering a yacht, please call **+1(954)274-4435**

TABLE OF CONTENTS

TABLE OF CONTENTS	2
SPECIFICATIONS	4
Overview	4
Basic Information	4
Dimensions	4
Speed, Capacities and Weight	4
Accommodations	4
Hull and Deck Information	5
Engine Information	5
PHOTOS	6
2012-04-09 05.34.07	6
2012-04-09 05.36.50	6
2012-04-09 05.38.25	6
2012-04-09 05.38.57	6
2012-04-09 05.39.07	6
2012-04-09 05.39.28	6
2012-04-09 05.41.47	7
2012-04-09 05.42.33	7
2012-04-09 05.44.05	7
2012-04-09 05.47.17	7
2012-04-09 05.47.30	7
2012-04-09 05.48.06	7
2012-04-09 05.48.48	8
2012-04-09 05.48.58	8
2012-04-09 05.49.04	8
2012-04-09 05.49.16	8
2012-04-09 05.50.13	8
2012-04-09 05.50.51	8

2012-04-09 05.52.45	9
2012-04-09 05.53.02	9
2012-04-09 05.54.04	9
2012-04-09 05.55.25	9
2012-04-09 05.55.37	9
2012-04-09 05.56.10	9
2012-04-09 05.56.30	10
2012-04-09 05.56.39	10
2012-04-09 05.57.45	10
2012-04-09 05.58.27	10
2012-04-09 05.58.39	10
2012-04-09 05.58.47	10
2012-04-09 05.58.53	11
CONTACTS	12
Contact details	12
Telephones	12
Office hours	12
Address	12

SPECIFICATIONS

Overview

COM-PAC 23/3 DIESEL Built by Hutchins Co, Inc. with a fuel capacity of 6.6 us gal. The Model Mark Three holds 13 us gal. of water. Theoretical hull speed of 6.02 Knots with a 20' 2" water line, 7' 2" cockpit, weight is 3,300 lbs. Beam of 7' 10 " Ballast of 1340 lbs. Draft of 2'3" and mast height of 30'. Yanmar 10 hp Roller furling, swim ladder. With over 600 23/3 s built to date this is one of the 35 23D ever produced. The 23D is very rare and quite desirable in the preowned market. Very practical and more lively than previous COM-PACs. Handsome appearance in an affordable package, Go Anywhere yacht.

Basic Information

Category: Sloop

Model Year: 1997

Year Built: 1997

Country: United States

Dimensions

LOA: 23' (7.01mm)

Beam: 7.83

Min Draft: 2' 3" (0.69mm)

Max Draft: 2' 3" (0.69mm)

Speed, Capacities and Weight

Cruise Speed: 6 Knots Kts. (7 MPH)

Max Speed: 6 Knots Kts. (7 MPH)

Water Capacity: 13 Gallons

Fuel Capacity: 7 Gal Gallons

Accommodations

Total Cabins: 1

Hull and Deck Information

Hull Material: Fiberglass

Engine Information

Engines: 1

Manufacturer: Yanmar

Engine Type: Inboard

Fuel Type: Diesel

PHOTOS

2012-04-09 05.34.07



2012-04-09 05.36.50



2012-04-09 05.38.25



2012-04-09 05.38.57



2012-04-09 05.39.07



2012-04-09 05.39.28



2012-04-09 05.41.47



2012-04-09 05.42.33



2012-04-09 05.44.05



2012-04-09 05.47.17



2012-04-09 05.47.30



2012-04-09 05.48.06



2012-04-09 05.48.48



2012-04-09 05.48.58



2012-04-09 05.49.04



2012-04-09 05.49.16



2012-04-09 05.50.13



2012-04-09 05.50.51



2012-04-09 05.52.45



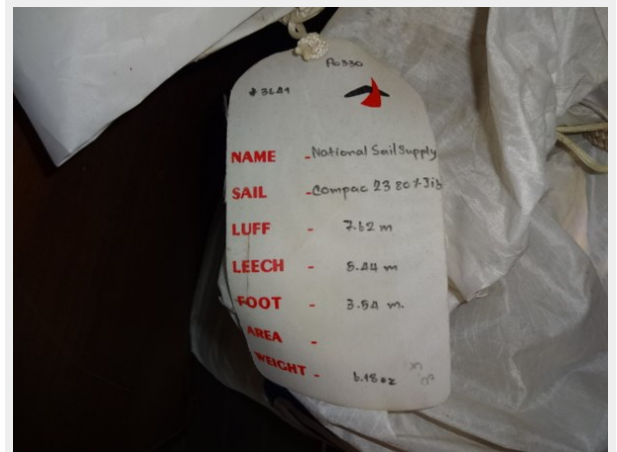
2012-04-09 05.53.02



2012-04-09 05.54.04



2012-04-09 05.55.25



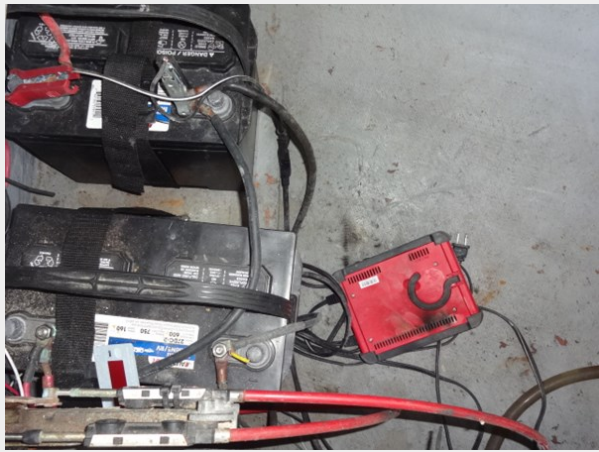
2012-04-09 05.55.37



2012-04-09 05.56.10



2012-04-09 05.56.30



2012-04-09 05.56.39



2012-04-09 05.57.45



2012-04-09 05.58.27



2012-04-09 05.58.39



2012-04-09 05.58.47



2012-04-09 05.58.53



CONTACTS

Andrey Shestakov, leading yacht broker of the sales department of Shestakov Yacht Sales Inc. Shestakov Yacht Sales Inc., the official representative of the Miami/Fort Lauderdale FL headquarters.

Contact details

Email: andrey@shestakovyachtsales.com

Web: shestakovyachtsales.com/en/

Telephones

USA: +1(954)274-4435

Office hours

Monday – Saturday: **9:00 - 21:00** EDT

Sunday: **closed**

Address



Harbour Towne Marina, 850 NE 3rd St,
STE 213, Dania, FL 33004