

SCOTIA — WILBUR



Builder: WILBUR

Year Built: 1985

Model: Sport Fisherman

Price: PRICE ON APPLICATION

Location: United States

LOA: 38' (11.58mm)

Beam: 13

Max Draft: 4' (1.22mm)

Cruise Speed: 8 Knots Kts. (9 MPH)

Max Speed: 12 Knots Kts. (14 MPH)

Our experienced yacht broker, Andrey Shestakov, will help you choose and buy a yacht that best suits your needs **Scotia — WILBUR** from our catalogue. Presently, at Shestakov Yacht Sales Inc., we have a wide variety of yachts available on our sale's list. We also work in close contact with all the big yacht manufacturers from all over the world.

If you would like to buy a yacht **Scotia — WILBUR** or would like help answering any questions concerning purchasing, selling or chartering a yacht, please call **+1(954)274-4435**

TABLE OF CONTENTS

TABLE OF CONTENTS	2
SPECIFICATIONS	5
Overview	5
Basic Information	5
Dimensions	5
Speed, Capacities and Weight	5
Accommodations	5
Hull and Deck Information	5
Engine Information	6
PHOTOS	7
1 Scotio 1985 38' Wilbur	7
1_2789053_38_wilbur_anchor_windlass	7
3_2789053_38_wilbur_port_side_deck1	7
2_2789053_38_wilbur_foredeck	7
4_2789053_38_wilbur_port_side_deck2	7
5_2789053_38_wilbur_starboard_side_deck1	7
6_2789053_38_wilbur_starboard_side_deck2	8
7_2789053_38_wilbur_flybridge_forward	8
8_2789053_38_wilbur_flybridge_aft	8
9_2789053_38_wilbur_flybridge_helm1	8
10_2789053_38_wilbur_flybridge_helm2	8
11_2789053_38_wilbur_flybridge_helmseats	8
12_2789053_38_wilbur_flybridge_forward_seating	9
13_2789053_38_wilbur_cockpit_forward	9
14_2789053_38_wilbur_cockpit_aft	9
15_2789053_38_wilbur_cockpit_port	9
16_2789053_38_wilbur_cockpit_starboard	9
17_2789053_38_wilbur_salon_forward	9

18_2789053_38_wilbur_salon_aft	10
19_2789053_38_wilbur_salon_port	10
20_2789053_38_wilbur_salon_starboard	10
21_2789053_38_wilbur_salon_entertainment_center	10
22_2789053_38_wilbur_galley	10
23_2789053_38_wilbur_lower_helm1	10
24_2789053_38_wilbur_lower_helm2	11
25_2789053_38_wilbur_aft_stateroom1	11
26_2789053_38_wilbur_aft_stateroom2	11
27_2789053_38_wilbur_forward_stateroom	11
28_2789053_38_wilbur_forward_stateroom_port	11
29_2789053_38_wilbur_forward_stateroom_starboard	11
30_2789053_38_wilbur_head	12
31_2789053_38_wilbur_engine_room	12
32_2789053_38_wilbur_engine_room_forward	12
33_2789053_38_wilbur_engine_room_aft	12
34_2789053_38_wilbur_port_main_engine	12
35_2789053_38_wilbur_starboard_main_engine	12
36_2789053_38_wilbur_racor_fuel_filters	13
37_2789053_38_wilbur_water_heater	13
38_2789053_38_wilbur_electrical_panel	13
39_2789053_38_wilbur_generator	13
41_2789053_	13
40_2789053_38_wilbur_battery_charger	13
CONTACTS	14
Contact details	14
Telephones	14
Office hours	14
Address	14

SPECIFICATIONS

Overview

Scotia is a classic, Maine built 1985 38' Wilbur Downeast convertible. She offers a very large salon and cockpit, upper and lower helms, two stateroom layout, Garmin chart plotter and VHF and a Westerbeke generator. With her attainable 12' height, Scotia is fully Great Loop capable.

Basic Information

Category: Sport Fisherman

Model Year: 1985

Year Built: 1985

Country: United States

Dimensions

LOA: 38' (11.58mm)

Beam: 13

Max Draft: 4' (1.22mm)

Speed, Capacities and Weight

Cruise Speed: 8 Knots Kts. (9 MPH)

Max Speed: 12 Knots Kts. (14 MPH)

Water Capacity: 40 Gallons

Holding Tank: 17 Gal Gallons

Fuel Capacity: 400 Gal Gallons

Accommodations

Total Cabins: 2

Sleeps: 4

Total Heads: 1

Hull and Deck Information

Hull Material: Fiberglass

Engine Information

Engines: 2

Manufacturer: Detroit Diesel

Engine Type: Inboard

Fuel Type: Diesel

PHOTOS

1 Scotio 1985 38' Wilbur



1_2789053_38_wilbur_anchor_windlass



2_2789053_38_wilbur_foredeck



3_2789053_38_wilbur_port_side_deck1



4_2789053_38_wilbur_port_side_deck2



5_2789053_38_wilbur_starboard_side_deck1



6_2789053_38_wilbur_starboard_side_deck2



7_2789053_38_wilbur_flybridge_forward



8_2789053_38_wilbur_flybridge_aft



9_2789053_38_wilbur_flybridge_helm1



10_2789053_38_wilbur_flybridge_helm2



11_2789053_38_wilbur_flybridge_helmseats



12_2789053_38_wilbur_flybridge_forward_seating



13_2789053_38_wilbur_cockpit_forward



14_2789053_38_wilbur_cockpit_aft



15_2789053_38_wilbur_cockpit_port



16_2789053_38_wilbur_cockpit_starboard



17_2789053_38_wilbur_salon_forward



18_2789053_38_wilbur_salon_aft



19_2789053_38_wilbur_salon_port



20_2789053_38_wilbur_salon_starboard



21_2789053_38_wilbur_salon_entertainment_center



22_2789053_38_wilbur_galley



23_2789053_38_wilbur_lower_helm1



24_2789053_38_wilbur_lower_helm2



25_2789053_38_wilbur_aft_stateroom1



26_2789053_38_wilbur_aft_stateroom2



27_2789053_38_wilbur_forward_stateroom



28_2789053_38_wilbur_forward_stateroom_port 29_2789053_38_wilbur_forward_stateroom_starboard



30_2789053_38_wilbur_head



31_2789053_38_wilbur_engine_room



32_2789053_38_wilbur_engine_room_forward



33_2789053_38_wilbur_engine_room_aft



34_2789053_38_wilbur_port_main_engine



35_2789053_38_wilbur_starboard_main_engine



36_2789053_38_wilbur_racor_fuel_filters



37_2789053_38_wilbur_water_heater



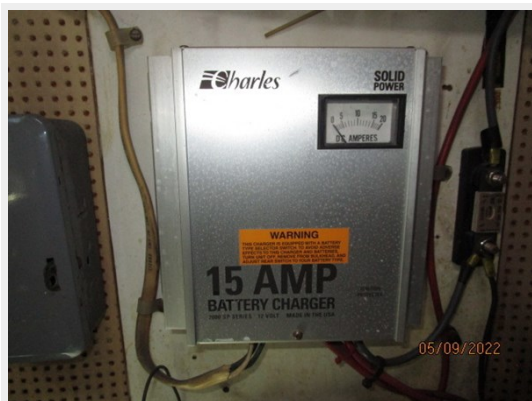
38_2789053_38_wilbur_electrical_panel



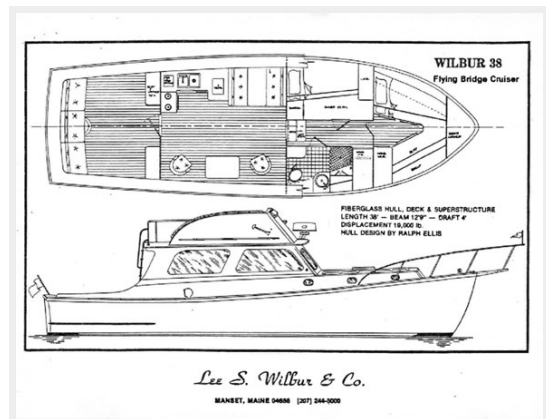
39_2789053_38_wilbur_generator



40_2789053_38_wilbur_battery_charger



41_2789053_



CONTACTS

Andrey Shestakov, leading yacht broker of the sales department of Shestakov Yacht Sales Inc. Shestakov Yacht Sales Inc., the official representative of the Miami/Fort Lauderdale FL headquarters.

Contact details

Email:
andrey@shestakovyachtsales.com

Web: shestakovyachtsales.com/en/

Telephones

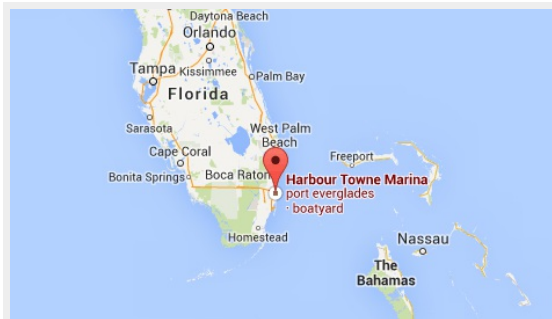
USA: +1(954)274-4435

Office hours

Monday – Saturday: **9:00 - 21:00 EDT**

Sunday: **closed**

Address



Harbour Towne Marina, 850 NE 3rd St,
STE 213, Dania, FL 33004