

MOONLIGHT LADY — PEARSON



Builder: PEARSON

Year Built: 1989

Model: Sloop

Price: PRICE ON APPLICATION

Location: United States

LOA: 36' (10.97mm)

Beam: 12.33

Max Draft: 4' 9" (1.45mm)

Cruise Speed: 7.29 Knots Kts. (8 MPH)

Our experienced yacht broker, Andrey Shestakov, will help you choose and buy a yacht that best suits your needs **Moonlight Lady — PEARSON** from our catalogue. Presently, at Shestakov Yacht Sales Inc., we have a wide variety of yachts available on our sale's list. We also work in close contact with all the big yacht manufacturers from all over the world.

If you would like to buy a yacht **Moonlight Lady — PEARSON** or would like help answering any questions concerning purchasing, selling or chartering a yacht, please call **+1(954)274-4435**

TABLE OF CONTENTS

TABLE OF CONTENTS	2
SPECIFICATIONS	6
Overview	6
Basic Information	6
Dimensions	6
Speed, Capacities and Weight	6
Accommodations	6
Hull and Deck Information	7
Engine Information	7
PHOTOS	8
2_2787754_	8
1_2787754_	8
3_2787754_	8
4_2787754_	8
5_2787754_	9
6_2787754_	9
7_2787754_	9
8_2787754_	9
9_2787754_	9
10_2787754_	9
11_2787754_	10
12_2787754_	10
13_2787754_	10
14_2787754_	10
15_2787754_	10
16_2787754_	10
17_2787754_	11
18_2787754_	11

19_2787754_	11
20_2787754_	11
21_2787754_	11
22_2787754_	11
23_2787754_	12
47_2787754_	12
48_2787754_	12
49_2787754_	12
50_2787754_	12
51_2787754_	12
52_2787754_	13
53_2787754_	13
54_2787754_	13
55_2787754_	13
56_2787754_	13
57_2787754_	13
58_2787754_	14
59_2787754_	14
60_2787754_	14
61_2787754_	14
62_2787754_	14
63_2787754_	14
64_2787754_	15
65_2787754_	15
66_2787754_	15
67_2787754_	15
68_2787754_	15
69_2787754_	15
70_2787754_	16

71_2787754_	16
73_2787754_	16
72_2787754_	16
74_2787754_	17
75_2787754_	17
76_2787754_	17
77_2787754_	17
78_2787754_	17
79_2787754_	17
81_2787754_	18
80_2787754_	18
82_2787754_	18
83_2787754_	18
84_2787754_	18
85_2787754_	18
86_2787754_	19
87_2787754_	19
89_2787754_	19
88_2787754_	19
91_2787754_	20
90_2787754_	20
92_2787754_	20
93_2787754_	20
94_2787754_	21
95_2787754_	21
96_2787754_	21
97_2787754_	21
CONTACTS	22
Contact details	22

Telephones	22
Office hours	22
Address	22

SPECIFICATIONS

Overview

Moonlight Lady is a well maintained Pearson 36-2 designed by Bill Shaw. She shows very well and with her 12' 4" beam she offers a very spacious interior. She features, two cabins, large salon, and a spacious cockpit. She is fully equipped featuring all the standard equipment, plus a refrigeration, radar, autopilot, chart plotter, Cruisair hatch mounted AC, dingy davits and a spare PYI feathering prop. With her wing keel she can get you into any of the shallow anchorages found in the Chesapeake, the Florida Keys or the Bahamas. She is ready to go and waiting for her next voyage, so call for a showing today!

Basic Information

Category: Sloop

Model Year: 1989

Year Built: 1989

Country: United States

Dimensions

LOA: 36' (10.97m)

Beam: 12.33

Max Draft: 4' 9" (1.45m)

Speed, Capacities and Weight

Cruise Speed: 7.29 Knots Kts. (8 MPH)

Water Capacity: 100 Gallons

Holding Tank: 25 Gal Gallons

Fuel Capacity: 22 Gal Gallons

Accommodations

Total Cabins: 2

Total Heads: 1

Hull and Deck Information

Hull Material: Fiberglass

Engine Information

Engines: 1

Manufacturer: Yanmar

Engine Type: Inboard

Fuel Type: Diesel

PHOTOS

1_2787754_



2_2787754_



3_2787754_



4_2787754_



5_2787754_



6_2787754_



7_2787754_



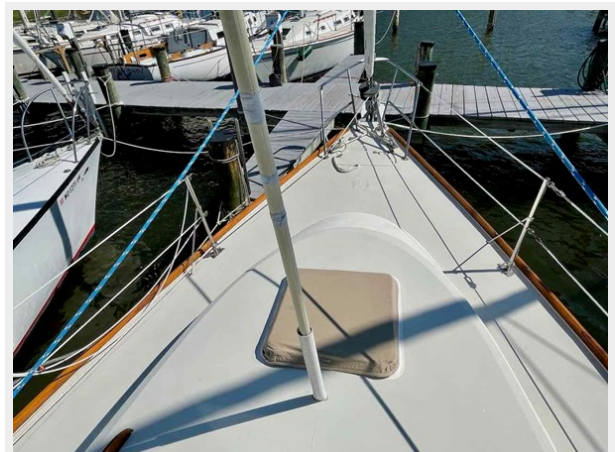
8_2787754_



9_2787754_



10_2787754_



11_2787754_



12_2787754_



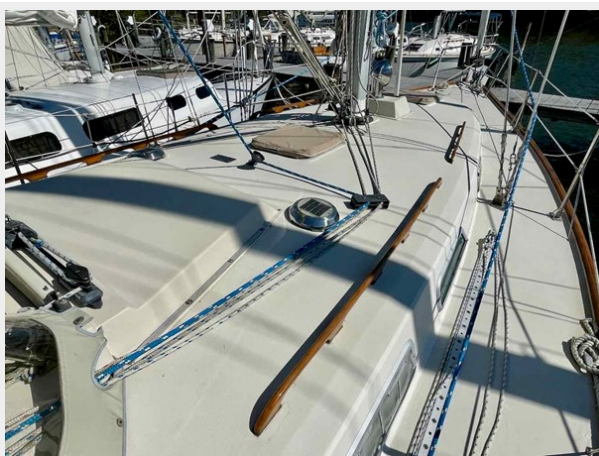
13_2787754_



14_2787754_



15_2787754_



16_2787754_



17_2787754_



18_2787754_



19_2787754_



20_2787754_



21_2787754_



22_2787754_



23_2787754_



47_2787754_



48_2787754_



49_2787754_



50_2787754_



51_2787754_



52_2787754_



53_2787754_



54_2787754_



55_2787754_



56_2787754_



57_2787754_



58_2787754_



59_2787754_



60_2787754_



61_2787754_



62_2787754_



63_2787754_



64_2787754_



65_2787754_



66_2787754_



67_2787754_



68_2787754_



69_2787754_



70_2787754_



71_2787754_



73_2787754_

72_2787754_



74_2787754_



75_2787754_



76_2787754_



77_2787754_



78_2787754_



79_2787754_



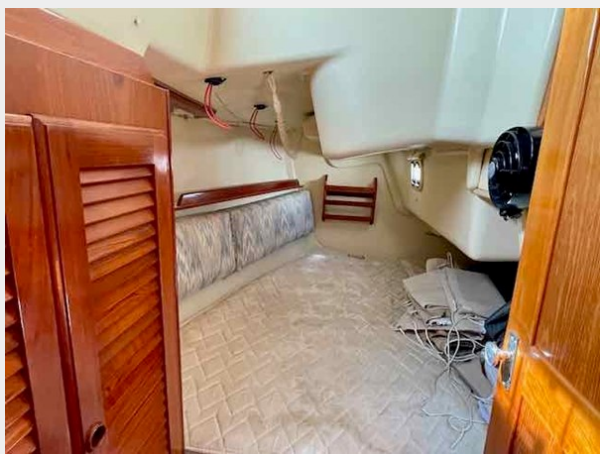
80_2787754_



81_2787754_



82_2787754_



83_2787754_



84_2787754_



85_2787754_



86_2787754_



87_2787754_



89_2787754_

88_2787754_



90_2787754_



91_2787754_



92_2787754_



93_2787754_



94_2787754_



95_2787754_



96_2787754_



97_2787754_



CONTACTS

Andrey Shestakov, leading yacht broker of the sales department of Shestakov Yacht Sales Inc. Shestakov Yacht Sales Inc., the official representative of the Miami/Fort Lauderdale FL headquarters.

Contact details

Email: andrey@shestakovyachtsales.com

Web: shestakovyachtsales.com/en/

Telephones

USA: +1(954)274-4435

Office hours

Monday – Saturday: **9:00 - 21:00** EDT

Sunday: **closed**

Address



Harbour Towne Marina, 850 NE 3rd St,
STE 213, Dania, FL 33004