

ANNA MAE — RANGER TUGS



Builder: RANGER TUGS

Year Built: 2018

Model: Trawler Yacht

Price: PRICE ON APPLICATION

LOA: 29' (8.84mm)

Beam: 10

Max Draft: 2' 4" (0.71mm)

Cruise Speed: 15 Knots Kts. (17 MPH)

Max Speed: 20 Knots Kts. (23 MPH)

Our experienced yacht broker, Andrey Shestakov, will help you choose and buy a yacht that best suits your needs **Anna mae — RANGER TUGS** from our catalogue. Presently, at Shestakov Yacht Sales Inc., we have a wide variety of yachts available on our sale's list. We also work in close contact with all the big yacht manufacturers from all over the world.

If you would like to buy a yacht **Anna mae — RANGER TUGS** or would like help answering any questions concerning purchasing, selling or chartering a yacht, please call **+1(954)274-4435**

TABLE OF CONTENTS

TABLE OF CONTENTS	2
SPECIFICATIONS	4
Overview	4
Basic Information	4
Dimensions	4
Speed, Capacities and Weight	4
Accommodations	5
Hull and Deck Information	5
Engine Information	5
PHOTOS	6
1_2788996_port_aft_profile	6
2_2788996_port_profile	6
4_2788996_bow_profile	6
3_2788996_port_forward_profile	6
5_2788996_starboard_aft_profile	6
6_2788996_starboard_profile	6
7_2788996_starboard_forward_profile	7
8_2788996_deck_swim_platform	7
9_2788996_cockpit_forward	7
10_2788996_cockpit_port	7
12_2788996_cockpit_helm	7
11_2788996_cockpit_starboard	7
13_2788996_cockpit_aft	8
14_2788996_main_cabin_forward	8
15_2788996_main_cabin_port	8
16_2788996_main_cabin_starboard	8
17_2788996_main_cabin_starboard_dining	8
18_2788996_main_cabin_helm	8

19_2788996_main_cabin_aft	8
20_2788996_master_stateroom_forward	8
21_2788996_master_stateroom_port	9
22_2788996_master_stateroom_aft	9
23_2788996_head_toilet_vanity	9
24_2788996_head_shower	9
25_2788996_guest_cabin	10
26_2788996_flybridge_access	10
27_2788996_flybridge_forward	10
28_2788996_flybridge_starboard	10
29_2788996_flybridge_dining	10
30_2788996_flybridge_helm	10
31_2788996_flybridge_aft	11
32_2788996_main_engine	11
33_2788996_electrical_panel	11
34_2788996_solor_panel	11
35_2788996_bow_pulpit	11
36_2788996_windlass	11
37_2788996_primary_anchor	11
38_2788996_anchor_rode	11
39_2788996_forward_boarding_ladder	12
40_2788996_auxiliary_anchor	12
41_2788996_hinged_mast	12
CONTACTS	13
Contact details	13
Telephones	13
Office hours	13
Address	13

SPECIFICATIONS

Overview

Anna Mae is a well outfitted 2018 Ranger Tug 29 Command Bridge that has been very nicely maintained throughout its single ownership. The boat features a factory installed flybridge with bimini and canvas covers, fully enclosed cockpit with a factory installed cockpit helm to starboard, a propane stove, oven and Magma grill with propane storage on the swim platform and both diesel and engine heating. The Volvo Penta D4 300 hp main diesel engine provides more than enough power to cruise this boat upward of 15 knots. A solar panel has also been installed to provide an additional charging option for the batteries. This boat has completed the Great Loop, is fully equipped with PFDs, flatware, silverware, bedding, fenders and tools. She is turnkey and ready to continue on the Great Loop or other cruising adventures.

Basic Information

Category: Trawler Yacht

Model Year: 2018

Year Built: 2018

Dimensions

LOA: 29' (8.84mm)

Beam: 10

Max Draft: 2' 4" (0.71mm)

Speed, Capacities and Weight

Cruise Speed: 15 Knots Kts. (17 MPH)

Max Speed: 20 Knots Kts. (23 MPH)

Water Capacity: 70 Gallons

Holding Tank: 40 Gal Gallons

Fuel Capacity: 145 Gal Gallons

Accommodations

Total Cabins: 2

Sleeps: 6

Total Heads: 1

Hull and Deck Information

Hull Material: Fiberglass

Engine Information

Engines: 1

Manufacturer: Volvo Penta

Engine Type: Inboard

Fuel Type: Diesel

PHOTOS

1_2788996_port_aft_profile



2_2788996_port_profile



3_2788996_port_forward_profile



4_2788996_bow_profile



5_2788996_starboard_aft_profile



6_2788996_starboard_profile



7_2788996_starboard_forward_profile



8_2788996_deck_swim_platform



9_2788996_cockpit_forward



10_2788996_cockpit_port



11_2788996_cockpit_starboard



12_2788996_cockpit_helm



13_2788996_cockpit_aft



14_2788996_main_cabin_forward



15_2788996_main_cabin_port



16_2788996_main_cabin_starboard



17_2788996_main_cabin_starboard_dining



18_2788996_main_cabin_helm



19_2788996_main_cabin_aft



20_2788996_master_stateroom_forward



21_2788996_master_stateroom_port



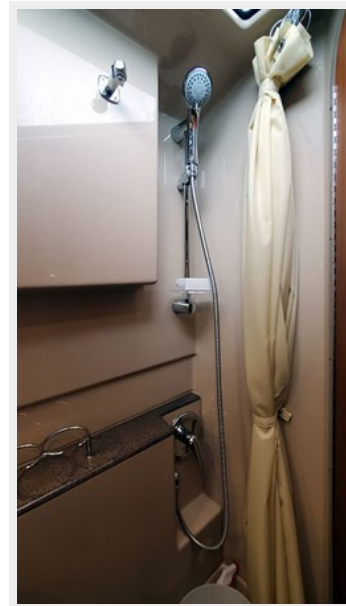
22_2788996_master_stateroom_aft



23_2788996_head_toilet_vanity



24_2788996_head_shower



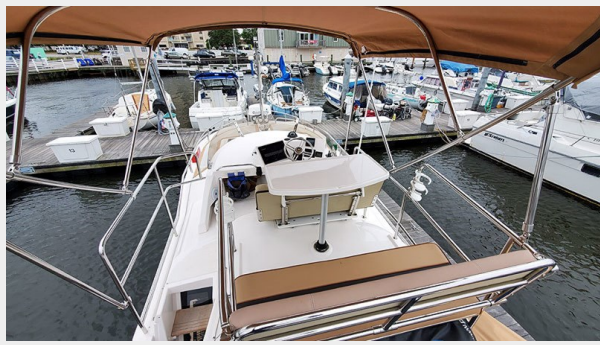
25_2788996_guest_cabin



26_2788996_flybridge_access



27_2788996_flybridge_forward



28_2788996_flybridge_starboard



29_2788996_flybridge_dining



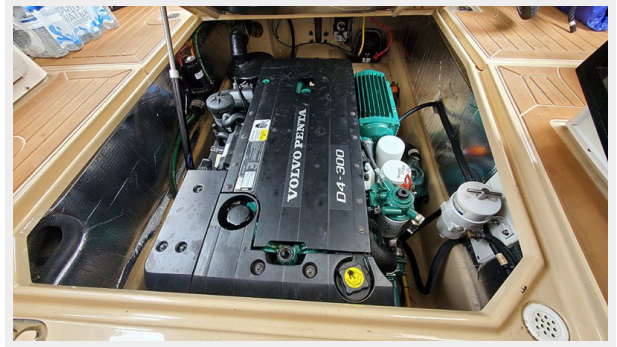
30_2788996_flybridge_helm



31_2788996_flybridge_aft



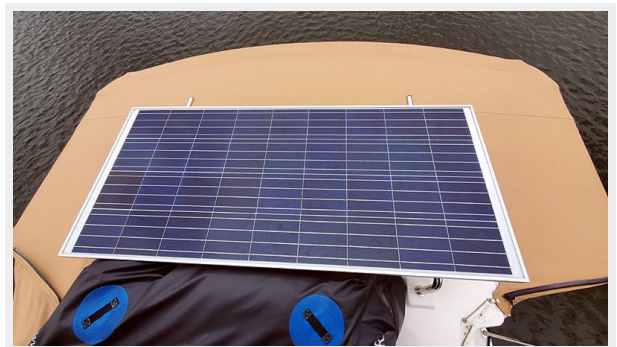
32_2788996_main_engine



33_2788996_electrical_panel



34_2788996_solar_panel



35_2788996_bow_pulpit



36_2788996_windlass



37_2788996_primary_anchor



38_2788996_anchor_rod



39_2788996_forward_boarding_ladder



40_2788996_auxiliary_anchor



41_2788996_hinged_mast



CONTACTS

Andrey Shestakov, leading yacht broker of the sales department of Shestakov Yacht Sales Inc. Shestakov Yacht Sales Inc., the official representative of the Miami/Fort Lauderdale FL headquarters.

Contact details

Email: andrey@shestakovyachtsales.com

Web: shestakovyachtsales.com/en/

Telephones

USA: +1(954)274-4435

Office hours

Monday – Saturday: **9:00 - 21:00** EDT

Sunday: **closed**

Address



Harbour Towne Marina, 850 NE 3rd St,
STE 213, Dania, FL 33004