

SEAL — DRETTMANN YACHTS



Builder: DRETTMANN YACHTS

LOA: 88' 7" (27mm)

Year Built: 2008

Beam: 22.96

Model: expedition yacht

Price: PRICE ON APPLICATION

Location: Spain

Our experienced yacht broker, Andrey Shestakov, will help you choose and buy a yacht that best suits your needs Seal — DRETTMANN YACHTS from our catalogue. Presently, at Shestakov Yacht Sales Inc., we have a wide variety of yachts available on our sale's list. We also work in close contact with all the big yacht manufacturers from all over the world.

If you would like to buy a yacht Seal — DRETTMANN YACHTS or would like help answering any questions concerning purchasing, selling or chartering a yacht, please call +1(954)274-4435

TABLE OF CONTENTS

TABLE OF CONTENTS	2
SPECIFICATIONS	4
Overview	4
Basic Information	4
Dimensions	4
Speed, Capacities and Weight	4
Accommodations	4
Hull and Deck Information	4
Engine Information	5
PHOTOS	6
FF888714-E4A3-42B8-8D6A-6E7E9B2FB0D8	6
E048371F-1D1A-4C20-9217-8D4F624AB0A8	6
E7C11E37-A5A9-49C1-A07D-FE4C59A145A2	6
CF62B077-4094-4491-8997-69C2A66F74D7	6
1585B9B2-24B4-49E1-BCD5-5C335C64DCC5	6
3CCD4AEA-AB5B-441B-8C8E-415AA5BCAF85	6
9B001299-901E-4CAB-9043-B44BB1E22100	7
38A92F83-94A8-4CF2-A38D-2023F731E373	7
B4B4C06E-1F9C-410A-83D6-130568F0C23D	7
94117F4B-BF9D-4BE1-94B6-6D30A0F3D835	7
2695F348-09C0-4F2D-ADE1-404924C1EB57	7
71253F2F-859F-4E4F-9D31-9E6831323ACD	7
265C090B-0DDD-4F3D-9328-688770272D53	8
6842995B-260C-4364-94D3-E21DF790BB2B	8
B05D81C5-7C70-4302-8A1C-C16D0F788C48	8
E9726FE0-63E4-426E-9B24-D80F2933AC38	8
E6E7CDF2-6DAA-4481-AB0D-F65950F9A86A	8
4512D246-BEAA-47CF-BD75-A9A3AC5ED9FF	8

561BAD9-6626-439A-8254-7B19E9558AA7	9
CONTACTS	10
Contact details	10
Telephones	10
Office hours	10
Address	10

SPECIFICATIONS

Overview

This beautiful Bandido 90 explorer yacht has received an extensive refit in 2018 and 2020, including a total rebuild of her two MAN engines, two brand new generators (65Kw) and new zero speed Trac stabilisers, plus new control systems installed, and having always been maintained by a professional captain and crew, she is amazing condition throughout. Her layout offers a spacious configuration of 4 cabins accommodating up to 8 people. she has a large dinghy garage at the Aft with more then enough space for water toys.

Basic Information

Category: expedition yacht

Sub Category: Expedition/Explorer

Model Year: 2008

Year Built: 2008

Refit Type: Extensive engine / interior refit

Country: Spain

Dimensions

LOA: 88' 7" (27mm)

Beam: 22.96

Speed, Capacities and Weight

Water Capacity: 6000 Gallons

Fuel Capacity: 10038.54 Gal Gallons

Accommodations

Total Cabins: 4

Total Berths: 8

Total Heads: 4

Hull and Deck Information

Hull Material: Steel

Engine Information

Engines: 2

Manufacturer: MAN

Engine Type: Inboard

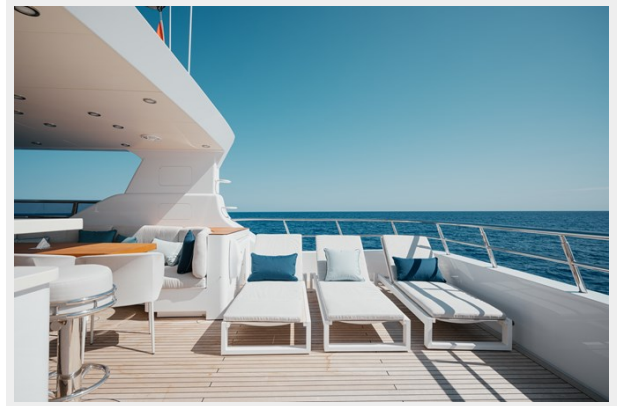
Fuel Type: Diesel

PHOTOS

FF888714-E4A3-42B8-8D6A-6E7E9B2FB0D8



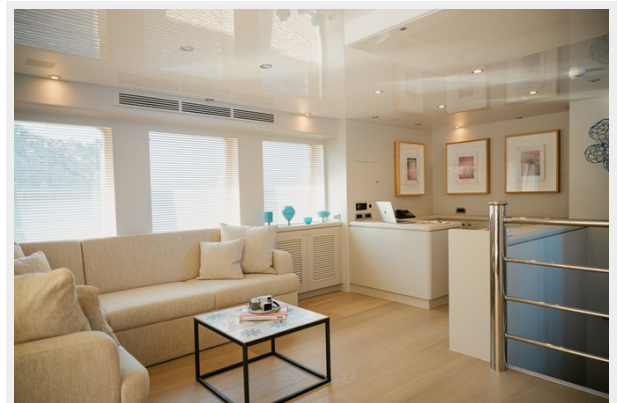
E048371F-1D1A-4C20-9217-8D4F624AB0A8



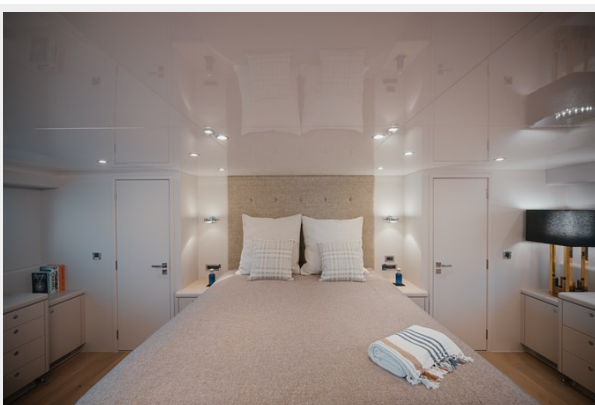
CF62B077-4094-4491-8997-69C2A66F74D7



E7C11E37-A5A9-49C1-A07D-FE4C59A145A2



1585B9B2-24B4-49E1-BCD5-5C335C64DCC5



3CCD4AEA-AB5B-441B-8C8E-415AA5BCAF85



9B001299-901E-4CAB-9043-B44BB1E22100 38A92F83-94A8-4CF2-A38D-2023F731E373



B4B4C06E-1F9C-410A-83D6-130568F0C23D 94117F4B-BF9D-4BE1-94B6-6D30A0F3D835



2695F348-09C0-4F2D-ADE1-404924C1EB57 71253F2F-859F-4E4F-9D31-9E6831323ACD



265C090B-0DDD-4F3D-9328-688770272D53 6842995B-260C-4364-94D3-E21DF790BB2B



B05D81C5-7C70-4302-8A1C-C16D0F788C48 E9726FE0-63E4-426E-9B24-D80F2933AC38



E6E7CDF2-6DAA-4481-AB0D-
F65950F9A86A

4512D246-BEAA-47CF-BD75-
A9A3AC5ED9FF



561BADC9-6626-439A-8254-7B19E9558AA7



CONTACTS

Andrey Shestakov, leading yacht broker of the sales department of Shestakov Yacht Sales Inc. Shestakov Yacht Sales Inc., the official representative of the Miami/Fort Lauderdale FL headquarters.

Contact details

Email: andrey@shestakovyachtsales.com

Web: shestakovyachtsales.com/en/

Telephones

USA: +1(954)274-4435

Office hours

Monday – Saturday: **9:00 - 21:00** EDT

Sunday: **closed**

Address



Harbour Towne Marina, 850 NE 3rd St,
STE 213, Dania, FL 33004