

XSR 85 HYBRID #NB202 — SARP YACHT



Builder: [SARP YACHT](#)

Year Built: 2022

Model: Motor Yacht

Price: PRICE ON APPLICATION

Location: Turkey

LOA: 85' 4" (26mm)

Beam: 21.19

Min Draft: 3' 11" (1.19mm)

Max Draft: 4' 2" (1.26mm)

Cruise Speed: 12 Knots Kts. (14 MPH)

Max Speed: 22 Knots Kts. (25 MPH)

Our experienced yacht broker, Andrey Shestakov, will help you choose and buy a yacht that best suits your needs XSR 85 HYBRID #NB202 — SARP YACHT from our catalogue. Presently, at Shestakov Yacht Sales Inc., we have a wide variety of yachts available on our sale's list. We also work in close contact with all the big yacht manufacturers from all over the world.

If you would like to buy a yacht XSR 85 HYBRID #NB202 — SARP YACHT or would like help answering any questions concerning purchasing, selling or chartering a yacht, please call +1(954)274-4435

TABLE OF CONTENTS

TABLE OF CONTENTS	2
SPECIFICATIONS	3
Overview	3
Basic Information	3
Dimensions	3
Speed, Capacities and Weight	4
Accommodations	4
Hull and Deck Information	4
Engine Information	4
PHOTOS	5
CONTACTS	10
Contact details	10
Telephones	10
Office hours	10
Address	10

SPECIFICATIONS

Overview

SARP YACHTS 85 XSR #NB202 is available for delivery within the next 6-8 months and features a Praxis Mega-Guard green propulsion parallel hybrid system with 4 different power modes including both full electric & diesel electric. To compliment this green technology the materials for the interior decor have all been selected due to their sustainability.

The design of the 85 XSR features a warm inviting interior decor married with large glass windows giving the open spaces a relaxed feeling.

XSR 85 SERIES - HYBRID PACKAGE

The XSR Series offers you the most environmentally friendly way to spend time aboard your boat. The system will allow for more space in the accommodation areas than a yacht at the same length. Electric engines operate silently with no exhaust gas. You can make slow cruises by utilizing electric propulsion with nearly zero cost.

Multiple configurations allow you to utilize full diesel or full electric modes, or a combination diesel electric hybrid mode both for propulsion purposes or operations of the house.

The maintenance period of electric engines is also longer than internal combustion engines. We provide you a maximum acceleration value regardless of propulsion revolution or the yacht's speed; an efficient and powerful cruise with the highest maneuverability.

Basic Information

Category: Motor Yacht

Sub Category: Raised Pilothouse

Model Year: 2022

Year Built: 2022

Country: Turkey

Dimensions

LOA: 85' 4" (26mm)

LWL: 78' 4" (23.86mm)

Beam: 21.19

Min Draft: 3' 11" (1.19mm)

Max Draft: 4' 2" (1.26mm)

Speed, Capacities and Weight

Cruise Speed: 12 Knots Kts. (14 MPH)

Cruise Speed Range: 1000

Max Speed: 22 Knots Kts. (25 MPH)

Gross Tonnage: 125 Pounds

Water Capacity: 2250 Gallons

Fuel Capacity: 2073.75 Gal Gallons

Accommodations

Total Cabins: 4

Sleeps: 8

Total Heads: 5

Crew Cabin: 3

Crew Berths: 3

Crew Heads: 2

Hull and Deck Information

Hull Material: Composite

Deck Material: Teak and Fiberglass

Hull Configuration: Fast Displacement Hull

Hull Color: Porsche Miami Blue

Hull Designer: Van Oossanen Naval Architects

Exterior Designer: Red Yacht Design

Interior Designer: Art-Line Interiors, Netherlands

Engine Information

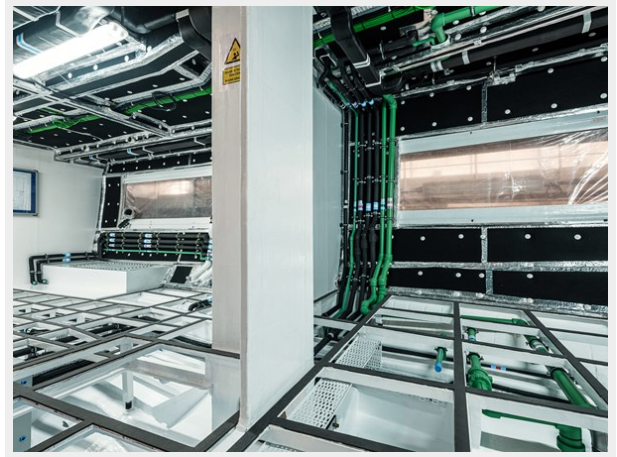
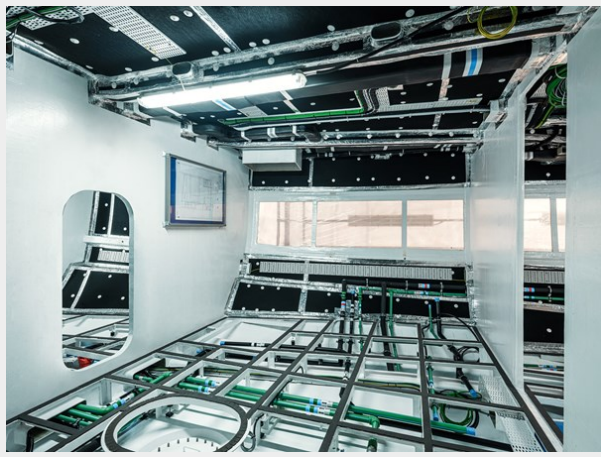
Engines: 2

Manufacturer: MAN

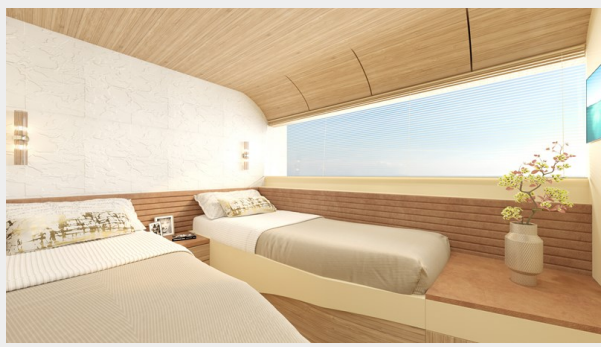
Fuel Type: Diesel

PHOTOS











CONTACTS

Andrey Shestakov, leading yacht broker of the sales department of Shestakov Yacht Sales Inc. Shestakov Yacht Sales Inc., the official representative of the Miami/Fort Lauderdale FL headquarters.

Contact details

Email: andrey@shestakovyachtsales.com

Web: shestakovyachtsales.com/en/

Telephones

USA: +1(954)274-4435

Office hours

Monday – Saturday: **9:00 - 21:00** EDT

Sunday: **closed**

Address



Harbour Towne Marina, 850 NE 3rd St,
STE 213, Dania, FL 33004