

MADDIE JANES — SEA RAY



Builder: SEA RAY

Year Built: 2009

Model: Motor Yacht

Price: \$298,000 USD

Location: United States

LOA: 41' (12.5mm)

Beam: 13.16

Max Draft: 3' 4" (1.02mm)

Cruise Speed: 22.59 Knots Kts. (26 MPH)

Max Speed: 27.81 Knots Kts. (32 MPH)

Our experienced yacht broker, Andrey Shestakov, will help you choose and buy a yacht that best suits your needs **Maddie Janes — SEA RAY** from **our catalogue**. Presently, at **Shestakov Yacht Sales Inc.**, we have a wide variety of yachts available on **our sale's list**. We also work in close contact with all the big **yacht manufacturers** from all over the world.

If you would like to buy a yacht **Maddie Janes — SEA RAY** or would like help answering any questions concerning purchasing, selling or chartering a yacht, please call **+1(954)274-4435**

TABLE OF CONTENTS

TABLE OF CONTENTS	2
SPECIFICATIONS	5
Overview	5
Basic Information	5
Dimensions	5
Speed, Capacities and Weight	5
Accommodations	5
Hull and Deck Information	6
Engine Information	6
PHOTOS	7
2	7
3	7
4	7
5	7
6	7
7	7
8	8
9	8
10	8
11	8
12	8
13	8
14	9
15	9
16	9
17	9
18	9
19	9

20	10
21	10
22	10
23	10
24	10
25	10
26	11
27	11
28	11
29	11
30	11
31	11
32	12
33	12
34	12
35	12
36	12
37	12
38	13
39	13
40	13
41	13
42	13
43	13
44	14
45	14
46	14
47	14
48	14

49	14
50	15
51	15
52	15
53	15
54	15
55	15
56	16
57	16
58	16
59	16
60	16
61	16
CONTACTS	17
Contact details	17
Telephones	17
Office hours	17
Address	17

SPECIFICATIONS

Overview

Maddie Janes is one of the newest and cleanest 40' Sundance motor-yacht available. Powered by the max upgraded twin QSB5.9, 420 HP engines for top performance, Maddie Janes has been professionally maintained throughout its lifespan. The warm rich high-gloss cherry wood interior shines like new throughout the vessel. The Cockpit area with ice maker and refrigerator, The bow seating, open salon, and the head and separated shower layout is perfect for the serious owner operator who likes to entertain family and friends.

Basic Information

Category: Motor Yacht

Model Year: 2009

Year Built: 2009

Country: United States

Dimensions

LOA: 41' (12.5mm)

Beam: 13.16

Max Draft: 3' 4" (1.02mm)

Speed, Capacities and Weight

Cruise Speed: 22.59 Knots Kts. (26 MPH)

Max Speed: 27.81 Knots Kts. (32 MPH)

Water Capacity: 70 Gallons

Holding Tank: 42 Gal Gallons

Fuel Capacity: 350 Gal Gallons

Accommodations

Total Cabins: 1

Total Heads: 1

Hull and Deck Information

Hull Material: Fiberglass

Engine Information

Engines: 2

Manufacturer: Cummins

Engine Type: Inboard

Fuel Type: Diesel

PHOTOS

2



3



4



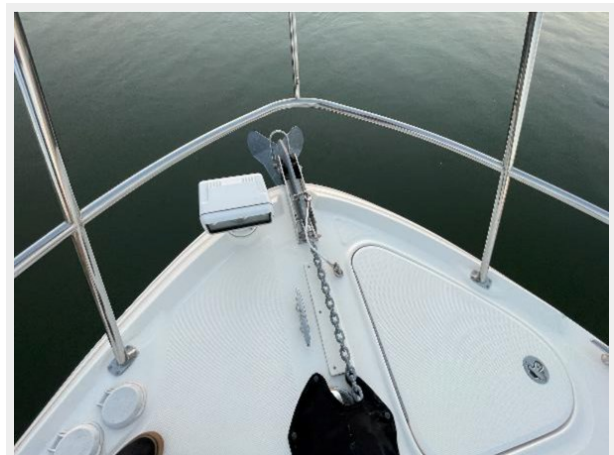
5



6



7



8



9



10



11



12



13



14



15



16



17



18



19



20



21



22



23



24



25



26



27



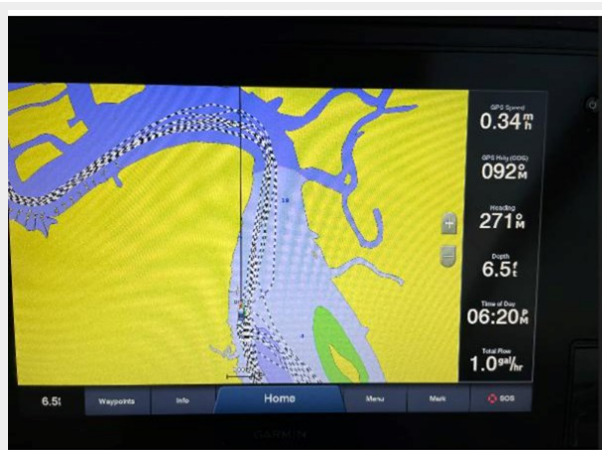
28



29



30



31



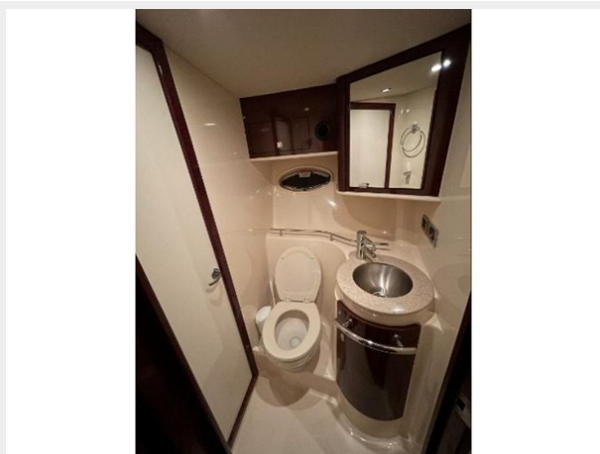
32



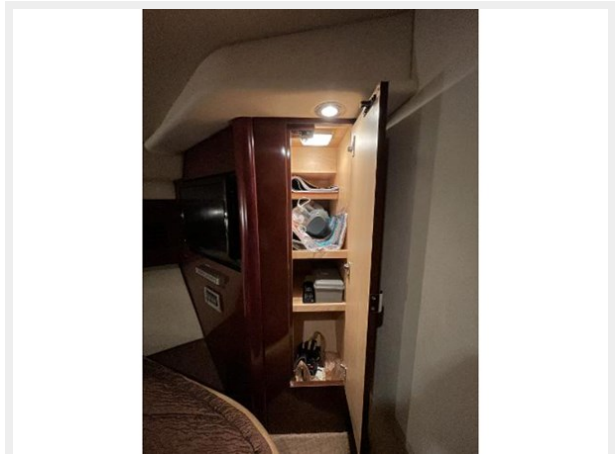
33



34



35



36



37



38



39



40



41



42



43



44



45



46



47



48



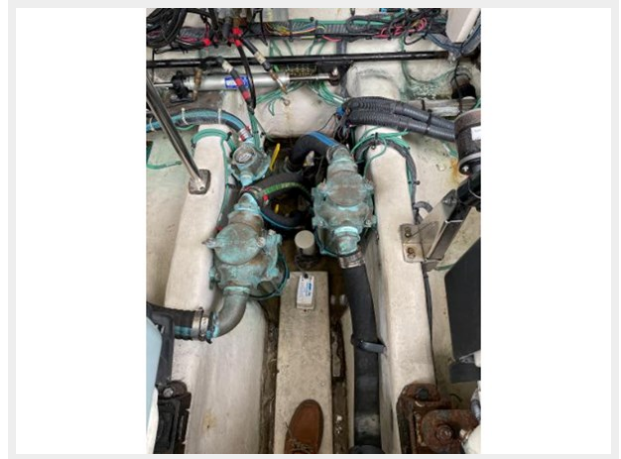
49



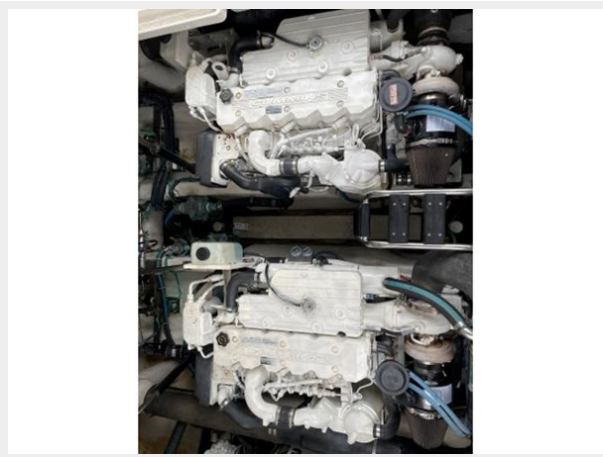
50



51



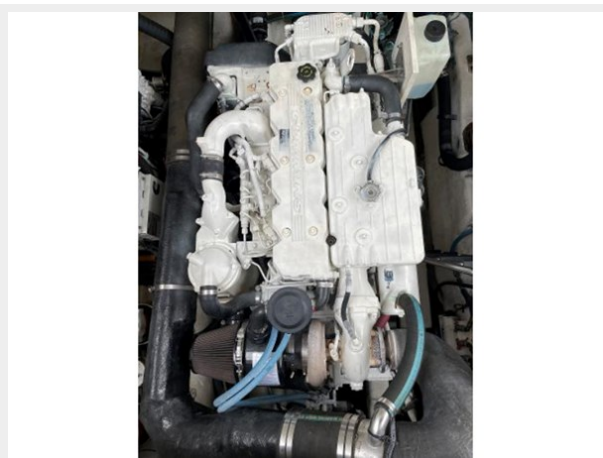
52



53



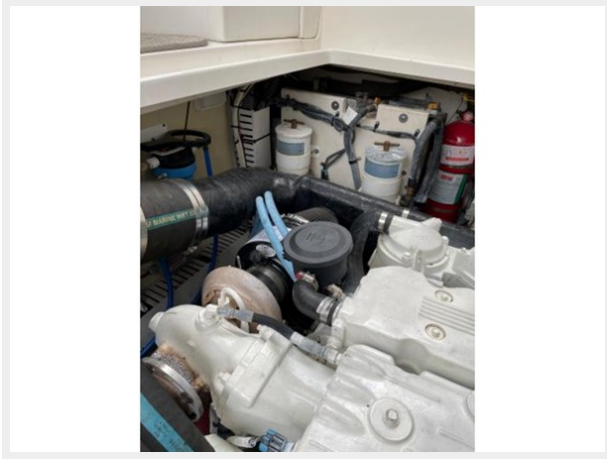
54



55



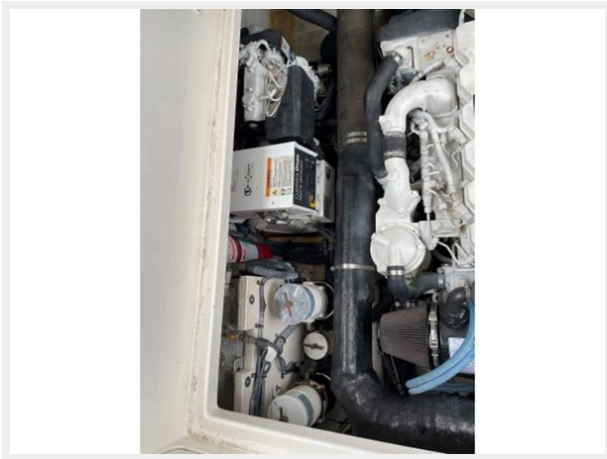
56



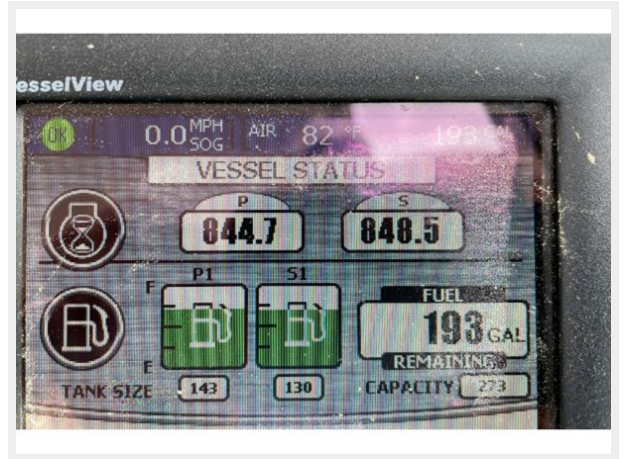
57



58



59



60



61



CONTACTS

Andrey Shestakov, leading yacht broker of the sales department of Shestakov Yacht Sales Inc. Shestakov Yacht Sales Inc., the official representative of the Miami/Fort Lauderdale FL headquarters.

Contact details

Email: **andrey@shestakovyachtsales.com**

Web: shestakovyachtsales.com/en/

Telephones

USA: **+1(954)274-4435**

Office hours

Monday – Saturday: **9:00 - 21:00** EDT

Sunday: **closed**

Address



Harbour Towne Marina, 850 NE 3rd St, STE 213, Dania, FL 33004