

MATTIE JANES — SEA RAY



Builder: SEA RAY

Year Built: 2009

Model: Motor Yacht

Price: \$349,900 USD

Location: United States

LOA: 39' (11.89mm)

Beam: 12.5

Max Draft: 3' 1" (0.94mm)

Cruise Speed: 22.59 Knots Kts. (26 MPH)

Max Speed: 27.81 Knots Kts. (32 MPH)

Our experienced yacht broker, Andrey Shestakov, will help you choose and buy a yacht that best suits your needs **Mattie Janes — SEA RAY** from our catalogue. Presently, at Shestakov Yacht Sales Inc., we have a wide variety of yachts available on our sale's list. We also work in close contact with all the big yacht manufacturers from all over the world.

If you would like to buy a yacht **Mattie Janes — SEA RAY** or would like help answering any questions concerning purchasing, selling or chartering a yacht, please call **+1(954)274-4435**

TABLE OF CONTENTS

TABLE OF CONTENTS	2
SPECIFICATIONS	5
Overview	5
Basic Information	5
Dimensions	6
Speed, Capacities and Weight	6
Accommodations	6
Hull and Deck Information	6
Engine Information	6
PHOTOS	7
2	7
3	7
4	7
5	7
6	7
7	7
8	8
9	8
10	8
11	8
12	8
13	8
14	9
15	9
16	9
17	9
18	9
19	9

20	10
21	10
22	10
23	10
24	10
25	10
26	11
27	11
28	11
29	11
30	11
31	11
32	12
33	12
34	12
35	12
36	12
37	12
38	13
39	13
40	13
41	13
42	13
43	13
44	14
45	14
46	14
47	14
48	14

49	14
50	15
51	15
52	15
53	15
54	15
55	15
56	16
57	16
58	16
59	16
60	16
61	16
CONTACTS	17
Contact details	17
Telephones	17
Office hours	17
Address	17

SPECIFICATIONS

Overview

Mattie Janes is a lift kept Sundancer with the Cummins QSB 5.9 common rail 425 hp diesel engines. She has a cherry interior, 12 inch Simrad Radar and 12inch Garmin Chartplotter.

Vessel has been on bi weekly maintenance program since purchased in May 2021. Vessel is run regularly and has updated and replaced the following systems:

Yacht Controller Docking System

Ice Maker

Batteries

Windshield Wiper motors and Blades

New AC pump

AC system flushed 10/21

New Alternators

Engines and Genset serviced @800 Hours

New underwater lights

New Salon Smart TV

Bottom Paint scheduled for 6/22

Basic Information

Category: Motor Yacht

Model Year: 2009

Year Built: 2009

Country: United States

Dimensions

LOA: 39' (11.89mm)

Beam: 12.5

Max Draft: 3' 1" (0.94mm)

Speed, Capacities and Weight

Cruise Speed: 22.59 Knots Kts. (26 MPH) **Max Speed:** 27.81 Knots Kts. (32 MPH)

Fuel Capacity: 350 Gal Gallons

Accommodations

Total Cabins: 1

Total Heads: 1

Hull and Deck Information

Hull Material: Fiberglass

Engine Information

Engines: 2

Manufacturer: Cummins

Engine Type: Inboard

Fuel Type: Diesel

PHOTOS

2



3



4



5



6



7



8



9



10



11



12



13



14



15



16



17



18



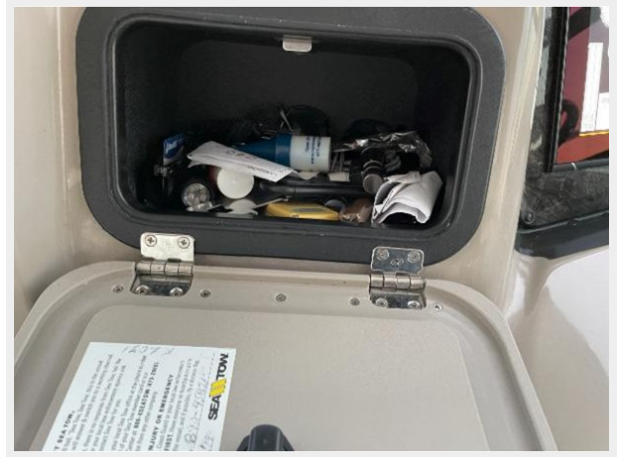
19



20



21



22



23



24



25



26



27



28



29



30



31



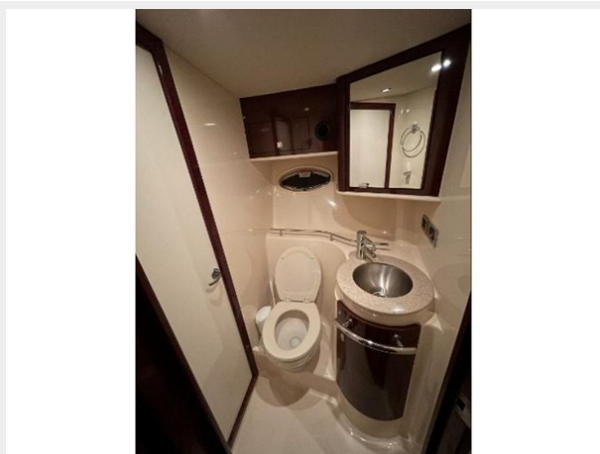
32



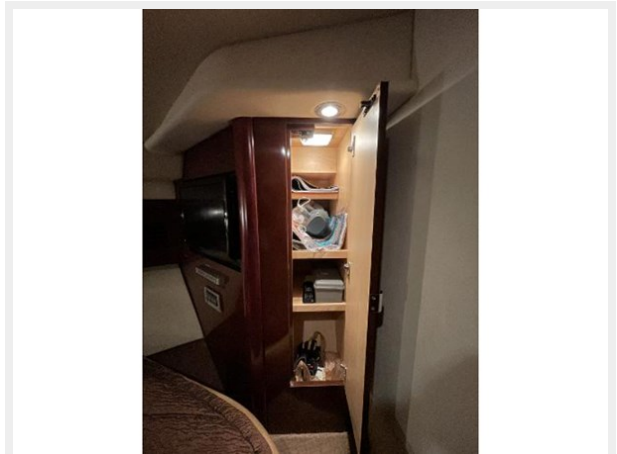
33



34



35



36



37



38



39



40



41



42



43



44



45



46



47



48



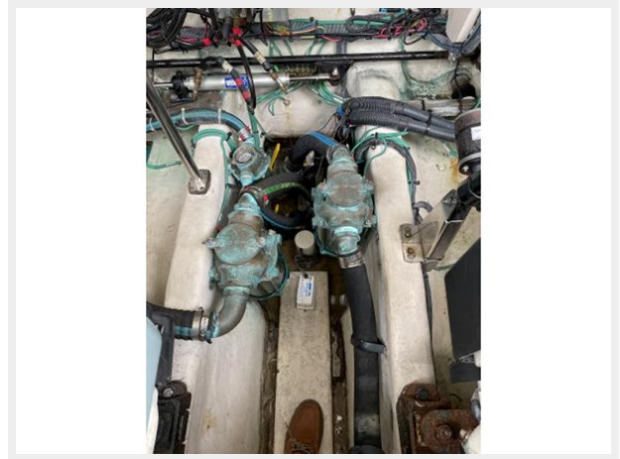
49



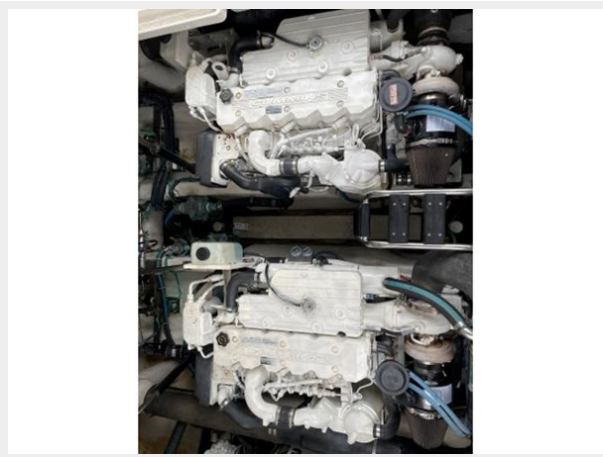
50



51



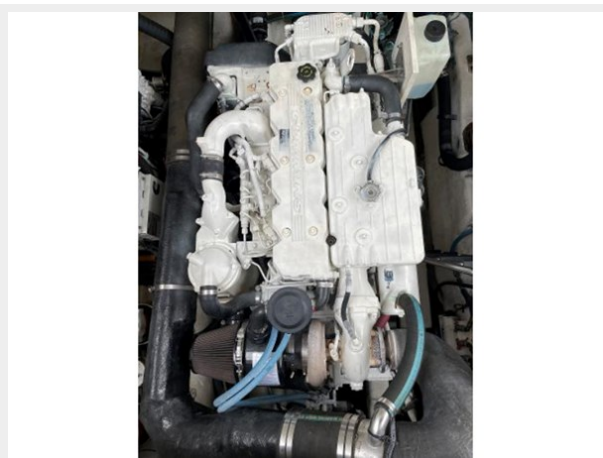
52



53



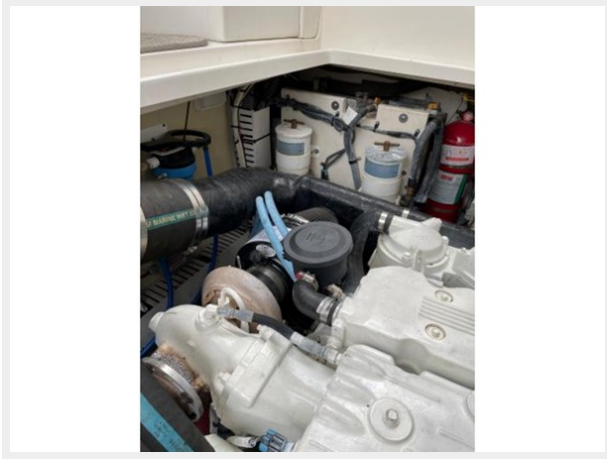
54



55



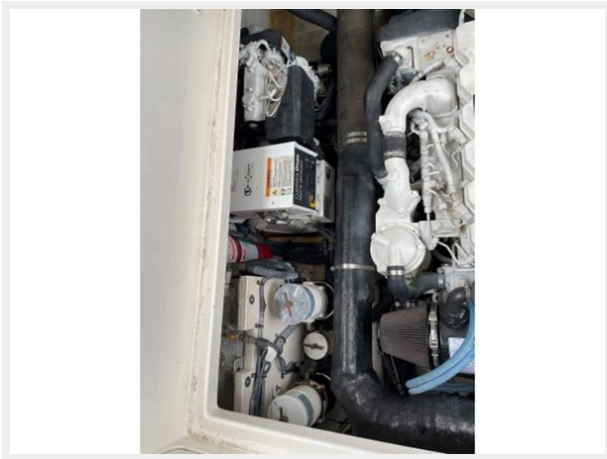
56



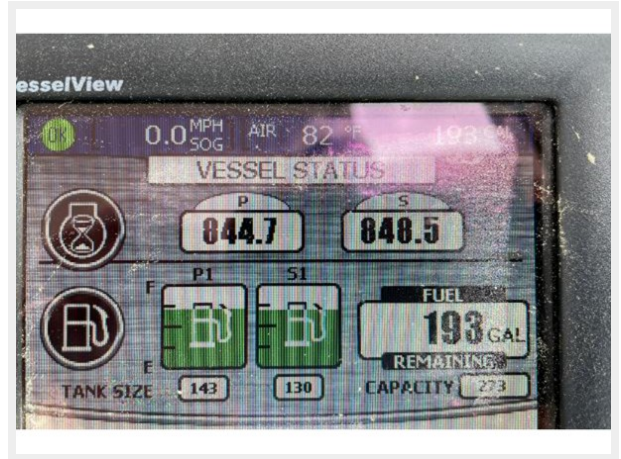
57



58



59



60



61



CONTACTS

Andrey Shestakov, leading yacht broker of the sales department of Shestakov Yacht Sales Inc. Shestakov Yacht Sales Inc., the official representative of the Miami/Fort Lauderdale FL headquarters.

Contact details

Email: andrey@shestakovyachtsales.com

Web: shestakovyachtsales.com/en/

Telephones

USA: +1(954)274-4435

Office hours

Monday – Saturday: **9:00 - 21:00** EDT

Sunday: **closed**

Address



Harbour Towne Marina, 850 NE 3rd St,
STE 213, Dania, FL 33004