

UNDER THE WIRE — CHRIS-CRAFT



Builder: CHRIS-CRAFT

Year Built: 1979

Model: Motor Yacht

Price: \$90,000 USD

Location: United States

LOA: 35' (10.67mm)

Beam: 13.08

Max Draft: 2' 10" (0.86mm)

Max Speed: 22 Knots Kts. (25 MPH)

Our experienced yacht broker, Andrey Shestakov, will help you choose and buy a yacht that best suits your needs **Under The Wire — CHRIS-CRAFT** from our catalogue. Presently, at Shestakov Yacht Sales Inc., we have a wide variety of yachts available on our sale's list. We also work in close contact with all the big yacht manufacturers from all over the world.

If you would like to buy a yacht **Under The Wire — CHRIS-CRAFT** or would like help answering any questions concerning purchasing, selling or chartering a yacht, please call **+1(954)274-4435**

TABLE OF CONTENTS

TABLE OF CONTENTS	2
SPECIFICATIONS	4
Overview	4
Basic Information	4
Dimensions	4
Speed, Capacities and Weight	4
Accommodations	4
Hull and Deck Information	4
Engine Information	4
PHOTOS	5
0_2789017_1_under_the_wire_1979_chris_craft_catalina_350_profile_port	5
1_2789017_2_under_the_wire_1979_chris_craft_catalina_deck	5
3_2789017_4_under_the_wire_1979_chris_craft_catalina_swim_platform	5
2_2789017_3_under_the_wire_1979_chris_craft_catalina_deck_port	5
4_2789017_5_under_the_wire_1979_chris_craft_catalina	5
5_2789017_6_under_the_wire_1979_chris_craft_catalina_front_seat	5
6_2789017_7_under_the_wire_1979_chris_craft_catalina_side_deck	5
7_2789017_8_under_the_wire_1979_chris_craft_catalina_foredeck_molded_seating	5
8_2789017_9_under_the_wire_1979_chris_craft_catalina_dashboard	6
9_2789017_10_under_the_wire_1979_chris_craft_catalina_control_panel	6
10_2789017_11_under_the_wire_1979_chris_craft_catalina_captain_seat	6
11_2789017_12_under_the_wire_1979_chris_craft_catalina_350_cockpit_bench	6
12_2789017_13_under_the_wire_1979_chris_craft_catalina_main	6
13_2789017_14_under_the_wire_1979_chris_craft_catalina_galley	6
14_2789017_15_under_the_wire_1979_chris_craft_catalina_galley2	6
15_2789017_16_under_the_wire_1979_chris_craft_catalina_galley_3	6
17_2789017_18_under_the_wire_1979_chris_craft_catalina_liquor_cabinet	7
16_2789017_17_under_the_wire_1979_chris_craft_catalina_refrigerator	7

18_2789017_19_under_the_wire_1979_chris_craft_catalina_inside_liquor_cabinet	7
19_2789017_20_under_the_wire_1979_chris_craft_catalina_light_on_liquor_cabinet	7
21_2789017_22_under_the_wire_1979_chris_craft_catalina_v_berth_port_bunk	7
20_2789017_21_under_the_wire_1979_chris_craft_catalina_v_berth	7
22_2789017_23_under_the_wire_1979_chris_craft_catalina_v_berth_port_top	7
23_2789017_24_under_the_wire_1979_chris_craft_catalina_v_berth_bottom_bunk	7
25_2789017_26_under_the_wire_1979_chris_craft_catalina_v_berth_locker_inside	8
24_2789017_25_under_the_wire_1979_chris_craft_catalina_locker_v_berth	8
26_2789017_27_under_the_wire_1979_chris_craft_catalina_passageway	8
27_2789017_28_under_the_wire_1979_chris_craft_catalina_head	8
28_2789017_29_under_the_wire_1979_chris_craft_catalina_head2	8
29_2789017_30_under_the_wire_1979_chris_craft_catalina_shower	8
30_2789017_31_under_the_wire_1979_chris_craft_catalina_sink	8
31_2789017_32_under_the_wire_1979_chris_craft_catalina_rear_window	8
33_2789017_34_under_the_wire_1979_chris_craft_catalina_port_rear_cabin	9
32_2789017_33_under_the_wire_1979_chris_craft_catalina_rear_cabin	9
34_2789017_35_under_the_wire_1979_chris_craft_catalina_starboard_rear_cabin	9
CONTACTS	10
Contact details	10
Telephones	10
Office hours	10
Address	10

SPECIFICATIONS

Overview

Introducing the 1979 Chris-Craft Catalina 35ft, a restored classic boat with a one-of-a-kind appeal. This remarkable vessel features a twin Cummins diesel engine that has undergone a complete overhaul, ensuring optimal performance. Impeccably remodeled inside and out, it showcases all-new appliances, beds, and flooring, creating a truly luxurious experience. Ideal for looping and liveaboard, it offers excellent fuel efficiency at 5-7 miles per gallon. With upgrades including new pumps, fresh paint, enhanced electronics, and meticulously maintained systems, this boat is a testament to craftsmanship and attention to detail. Embark on an unforgettable journey with this unique and meticulously restored Chris-Craft Catalina. Located in New Johnsonville, Tennessee.

Basic Information

Category: Motor Yacht

Model Year: 1979

Year Built: 1979

Country: United States

Dimensions

LOA: 35' (10.67mm)

Beam: 13.08

Max Draft: 2' 10" (0.86mm)

Speed, Capacities and Weight

Max Speed: 22 Knots Kts. (25 MPH)

Water Capacity: 50 Gallons

Holding Tank: 40 Gal Gallons

Fuel Capacity: 176 Gal Gallons

Accommodations

Total Cabins: 2

Sleeps: 4

Total Heads: 1

Hull and Deck Information

Hull Material: Fiberglass

Engine Information

Engines: 1

Manufacturer: Cummins

PHOTOS

0_2789017_1_under_the_wire_1979_chris_craft_catalina_350_profile_port



1_2789017_2_under_the_wire_1979_chris_craft_catalina_deck



3_2789017_4_under_the_wire_1979_chris_craft_catalina_swim_platform

2_2789017_3_under_the_wire_1979_chris_craft_catalina_deck_port



4_2789017_5_under_the_wire_1979_chris_craft_catalina



5_2789017_6_under_the_wire_1979_chris_craft_catalina_front_seat



6_2789017_7_under_the_wire_1979_chris_craft_catalina_side_deck 7_2789017_8_under_the_wire_1979_chris_craft_catalina_foredeck_molded_s



8_2789017_9_under_the_wire_1979_chris_craft_catalina_dashboard



9_2789017_10_under_the_wire_1979_chris_craft_catalina_control_panel



10_2789017_11_under_the_wire_1979_chris_craft_catalina_captain_seat 11_2789017_12_under_the_wire_1979_chris_craft_catalina_350_cockpit



12_2789017_13_under_the_wire_1979_chris_craft_catalina_main



13_2789017_14_under_the_wire_1979_chris_craft_catalina_galley



14_2789017_15_under_the_wire_1979_chris_craft_catalina_galley2

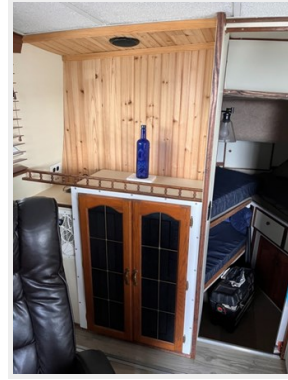


15_2789017_16_under_the_wire_1979_chris_craft_catalina_galley_3

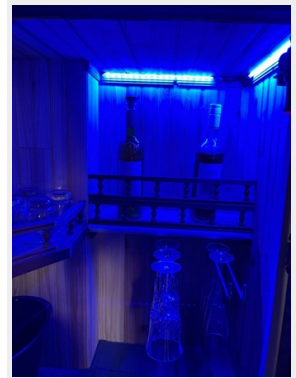


17_2789017_18_under_the_wire_1979_chris_craft_catalina_liquor_cabinet

16_2789017_17_under_the_wire_1979_chris_craft_catalina_refrigerator



18_2789017_19_under_the_wire_1979_chris_craft_catalina_inside_liquor_cabinet 19_2789017_20_under_the_wire_1979_chris_craft_catalina_ligh

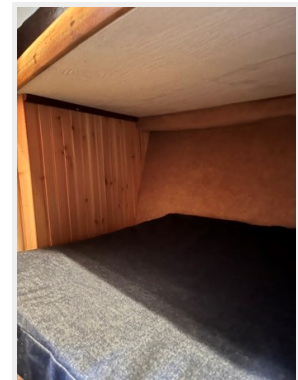


21_2789017_22_under_the_wire_1979_chris_craft_catalina_v_berth_port_bun

20_2789017_21_under_the_wire_1979_chris_craft_catalina_v_berth

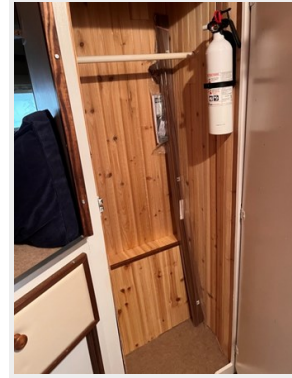


22_2789017_23_under_the_wire_1979_chris_craft_catalina_v_berth_port_top 23_2789017_24_under_the_wire_1979_chris_craft_catalina_v_berth



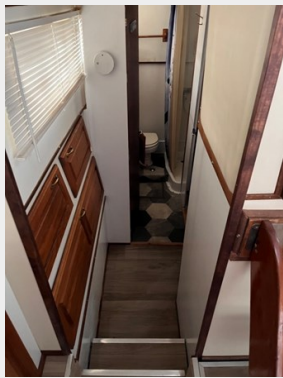
25_2789017_26_under_the_wire_1979_chris_craft_catalina_v_berth_lo

24_2789017_25_under_the_wire_1979_chris_craft_catalina_locker_v_berth



26_2789017_27_under_the_wire_1979_chris_craft_catalina_passageway

27_2789017_28_under_the_wire_1979_chris_craft_catalina_head



28_2789017_29_under_the_wire_1979_chris_craft_catalina_head2

29_2789017_30_under_the_wire_1979_chris_craft_catalina_shower



30_2789017_31_under_the_wire_1979_chris_craft_catalina_sink

31_2789017_32_under_the_wire_1979_chris_craft_catalina_rear_window



33_2789017_34_under_the_wire_1979_chris_craft_catalina_port_rear_cabi

32_2789017_33_under_the_wire_1979_chris_craft_catalina_rear_cabin



34_2789017_35_under_the_wire_1979_chris_craft_catalina_starboard_rear_cabin



CONTACTS

Andrey Shestakov, leading yacht broker of the sales department of Shestakov Yacht Sales Inc. Shestakov Yacht Sales Inc., the official representative of the Miami/Fort Lauderdale FL headquarters.

Contact details

Email:
andrey@shestakovyachtsales.com

Web: shestakovyachtsales.com/en/

Telephones

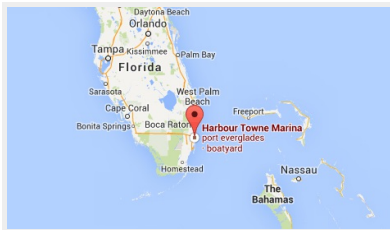
USA: +1(954)274-4435

Office hours

Monday – Saturday: 9:00 - 21:00 EDT

Sunday: closed

Address



Harbour Towne Marina, 850 NE 3rd St,
STE 213, Dania, FL 33004