

SEA DOG — TIARA



Builder: TIARA

Year Built: 2005

Model: Boats

Price: PRICE ON APPLICATION

Location: United States

LOA: 30' 9" (9.37mm)

Beam: 11.33

Max Draft: 2' 8" (0.81mm)

Cruise Speed: 25 Knots Kts. (29 MPH)

Max Speed: 30 Knots Kts. (35 MPH)

Our experienced yacht broker, Andrey Shestakov, will help you choose and buy a yacht that best suits your needs **Sea Dog — TIARA** from our catalogue. Presently, at Shestakov Yacht Sales Inc., we have a wide variety of yachts available on our sale's list. We also work in close contact with all the big yacht manufacturers from all over the world.

If you would like to buy a yacht **Sea Dog — TIARA** or would like help answering any questions concerning purchasing, selling or chartering a yacht, please call **+1(954)274-4435**

TABLE OF CONTENTS

TABLE OF CONTENTS	2
SPECIFICATIONS	5
Overview	5
Basic Information	5
Dimensions	5
Speed, Capacities and Weight	5
Accommodations	6
Hull and Deck Information	6
Engine Information	6
PHOTOS	7
2	7
3	7
4	7
5	7
6	7
7	7
8	8
9	8
10	8
11	8
12	8
13	8
14	9
15	9
16	9
17	9
18	9
19	9

20	10
21	10
22	10
23	10
24	10
25	10
26	11
27	11
28	11
29	11
30	11
31	11
32	12
33	12
34	12
35	12
36	12
37	12
38	13
39	13
40	13
41	13
42	13
43	13
44	14
45	14
46	14
47	14

CONTACTS	15
----------	----

Contact details	15
Telephones	15
Office hours	15
Address	15

SPECIFICATIONS

Overview

This Tiara 2900 Classic is a must see for anyone looking for a low hour, Twin Crusader inboard powered vessel complete with hardtop and full weather enclosure. With her conservative styling and top quality construction, this model has long appealed to those boaters seeking a dual-purpose express capable of some serious fishing as well as comfortable family cruising. She is built on a modified-V hull with a wide 11'4" beam and a huge cockpit with transom door. The interior is simple and efficient with an angled double berth forward, and a convertible dinette making sleeping accommodations for 4. The galley features a single burner electric stovetop, stainless steel sink, Corian countertop, and a dual voltage refrigerator. The head/shower compartment is adequate and the entire interior features the Tiara standard Teak paneling and cabinetry. Fresh Bottom Paint, engines serviced, and a new Vinyl Hull Wrap makes this one "Turn Key" ready. Call today and start making your future cruising and fishing plans.

Basic Information

Category: Boats

Sub Category: Cuddy

Model Year: 2005

Year Built: 2005

Country: United States

Dimensions

LOA: 30' 9" (9.37mm)

Beam: 11.33

Max Draft: 2' 8" (0.81mm)

Speed, Capacities and Weight

Cruise Speed: 25 Knots Kts. (29 MPH)

Max Speed: 30 Knots Kts. (35 MPH)

Water Capacity: 30 Gallons

Holding Tank: 20 Gal Gallons

Fuel Capacity: 200 Gal Gallons

Accommodations

Total Cabins: 2

Total Heads: 1

Hull and Deck Information

Hull Material: Fiberglass

Engine Information

Engines: 2

Manufacturer: Crusader

Engine Type: Inboard

Fuel Type: Gas/Petrol

PHOTOS

2



3



4



5



6



7



8



9



10



11



12



13



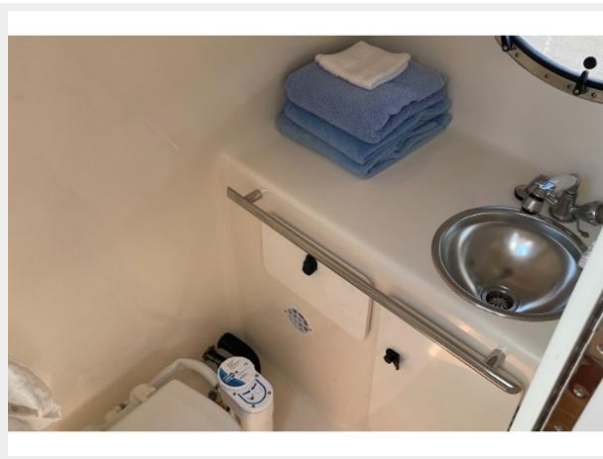
14



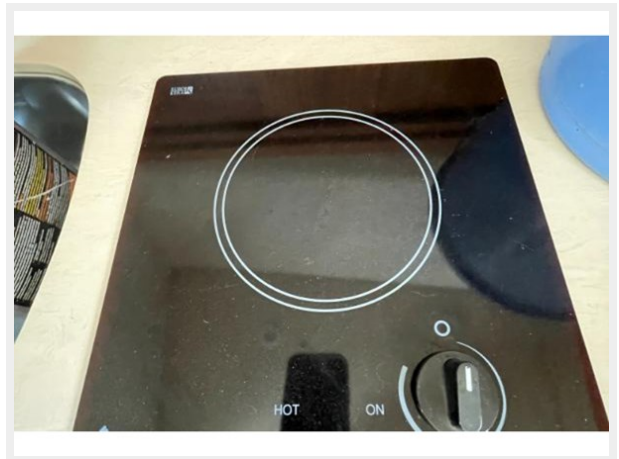
15



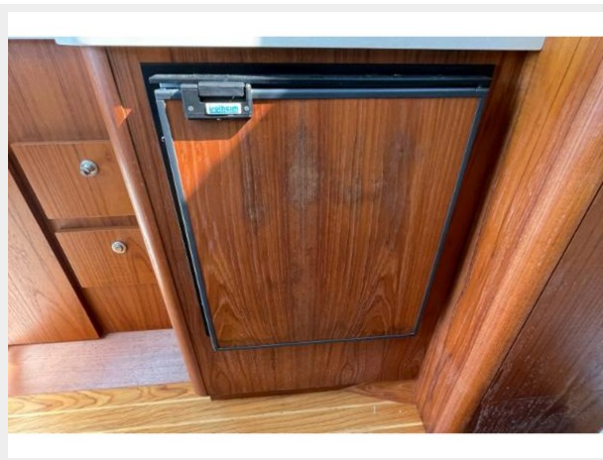
16



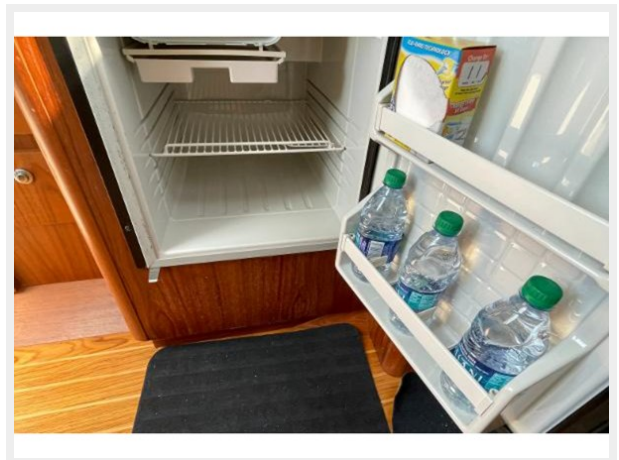
17



18



19



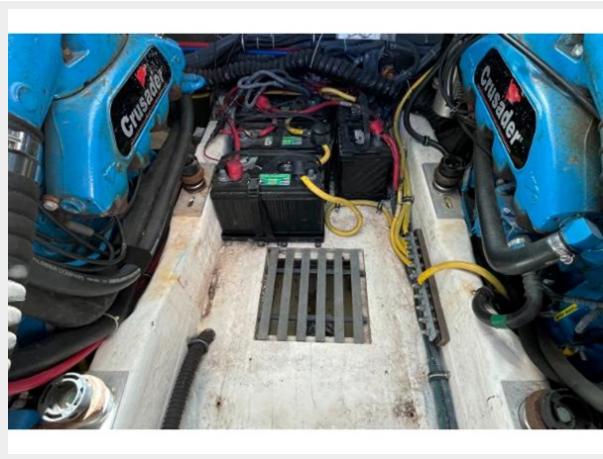
20



21



22



23



24



25



26



27



28



29



30



31



32



33



34



35



36



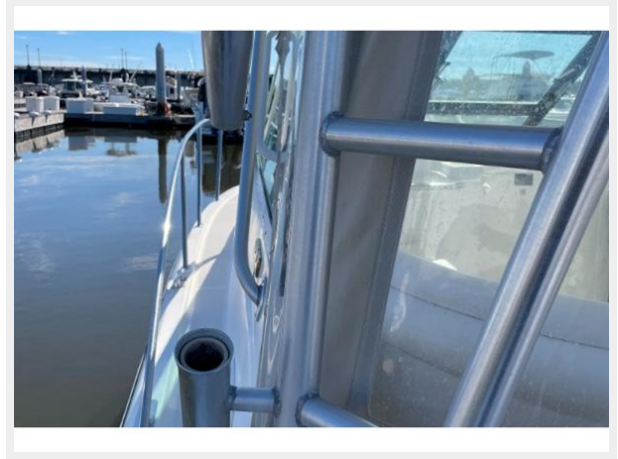
37



38



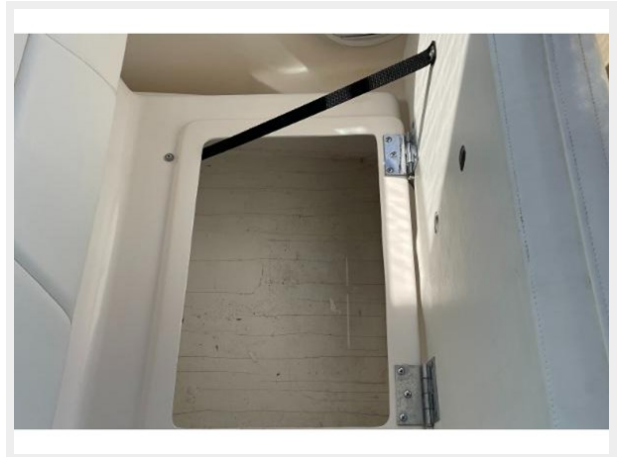
39



40



41



42



43



44



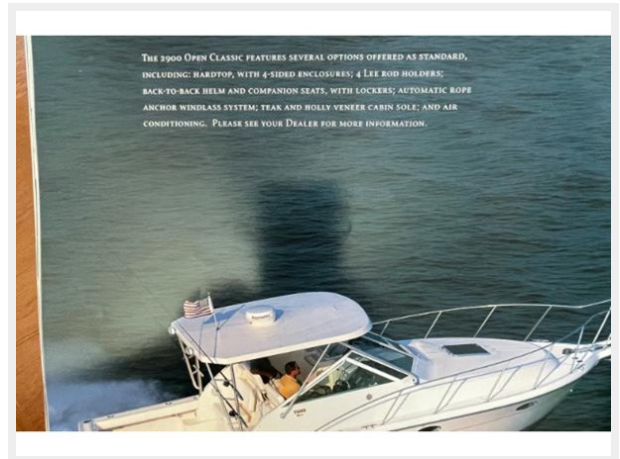
45



46



47



CONTACTS

Andrey Shestakov, leading yacht broker of the sales department of Shestakov Yacht Sales Inc. Shestakov Yacht Sales Inc., the official representative of the Miami/Fort Lauderdale FL headquarters.

Contact details

Email: andrey@shestakovyachtsales.com

Web: shestakovyachtsales.com/en/

Telephones

USA: +1(954)274-4435

Office hours

Monday – Saturday: **9:00 - 21:00** EDT

Sunday: **closed**

Address



Harbour Towne Marina, 850 NE 3rd St,
STE 213, Dania, FL 33004