

SALTY DOG — ALBIN



Builder: ALBIN

Year Built: 1983

Model: Trawler Yacht

Price: PRICE ON APPLICATION

Location: United States

LOA: 35' 9" (10.9mm)

Beam: 13.16

Max Draft: 3' 6" (1.07mm)

Our experienced yacht broker, Andrey Shestakov, will help you choose and buy a yacht that best suits your needs **Salty Dog — ALBIN** from our catalogue. Presently, at Shestakov Yacht Sales Inc., we have a wide variety of yachts available on our sale's list. We also work in close contact with all the big yacht manufacturers from all over the world.

If you would like to buy a yacht **Salty Dog — ALBIN** or would like help answering any questions concerning purchasing, selling or chartering a yacht, please call **+1(954)274-4435**

TABLE OF CONTENTS

| | |
|------------------------------|---|
| TABLE OF CONTENTS | 2 |
| SPECIFICATIONS | 5 |
| Overview | 5 |
| Basic Information | 5 |
| Dimensions | 5 |
| Speed, Capacities and Weight | 5 |
| Accommodations | 6 |
| Hull and Deck Information | 6 |
| Engine Information | 6 |
| PHOTOS | 7 |
| 2 | 7 |
| 3 | 7 |
| 4 | 7 |
| 5 | 7 |
| 6 | 7 |
| 7 | 7 |
| 8 | 8 |
| 9 | 8 |
| 10 | 8 |
| 11 | 8 |
| 12 | 8 |
| 13 | 8 |
| 14 | 9 |
| 15 | 9 |
| 16 | 9 |
| 17 | 9 |
| 18 | 9 |
| 19 | 9 |

| | |
|----|----|
| 20 | 10 |
| 21 | 10 |
| 22 | 10 |
| 23 | 10 |
| 24 | 10 |
| 25 | 10 |
| 26 | 11 |
| 27 | 11 |
| 28 | 11 |
| 29 | 11 |
| 30 | 11 |
| 31 | 11 |
| 32 | 12 |
| 33 | 12 |
| 34 | 12 |
| 35 | 12 |
| 36 | 12 |
| 37 | 12 |
| 38 | 13 |
| 39 | 13 |
| 40 | 13 |
| 41 | 13 |
| 42 | 13 |
| 43 | 13 |
| 44 | 14 |
| 45 | 14 |
| 46 | 14 |
| 47 | 14 |
| 48 | 14 |

| | |
|-----------------|----|
| 49 | 14 |
| 50 | 15 |
| 51 | 15 |
| CONTACTS | 16 |
| Contact details | 16 |
| Telephones | 16 |
| Office hours | 16 |
| Address | 16 |

SPECIFICATIONS

Overview

This 36 Albin Trawler, Salty Dog has been a Fresh Water boat most of its life. She is Albin 36 Hull #364, she was originally was kept on Lake Michigan, and has been docked in Fresh Water in SC the last 7 years. This boat has been maintained, and upgraded by a retired diesel mechanic.

She offers a reliable Ford Lehman Diesel Engine, a 4.4 KW Generator, and a Bow Thruster!

This trawler will make a great cruiser, live aboard, or great loop boat!

There is also a 8.5' Hard Body Dinghy and 6HP Suzuki Outboard included!

Check out the FULL SPECS for more details, and give us a call today to set up a time to come see her!

Basic Information

Category: Trawler Yacht

Sub Category: Aft Cabin

Model Year: 1983

Year Built: 1983

Country: United States

Dimensions

LOA: 35' 9" (10.9mm)

Beam: 13.16

Max Draft: 3' 6" (1.07mm)

Speed, Capacities and Weight

Water Capacity: 220 Gallons

Holding Tank: 40 Gal Gallons

Fuel Capacity: 350 Gal Gallons

Accommodations

Total Cabins: 3

Total Heads: 2

Hull and Deck Information

Hull Material: Fiberglass

Engine Information

Engines: 1

Manufacturer: Lehman

Engine Type: Inboard

Fuel Type: Diesel

PHOTOS

2



3



4



5



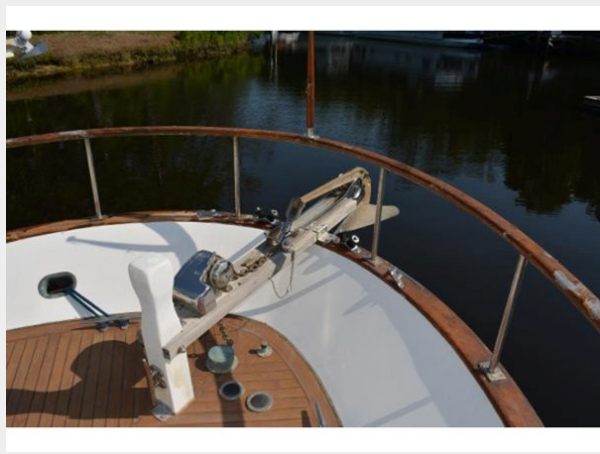
6



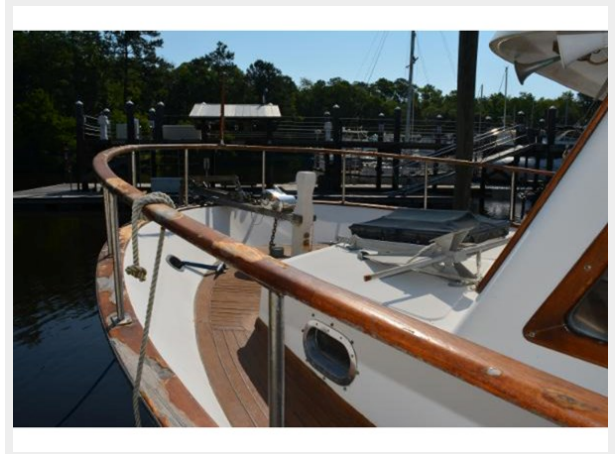
7



8



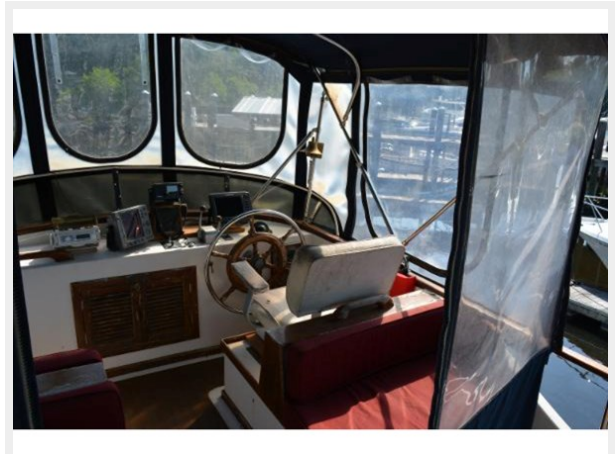
9



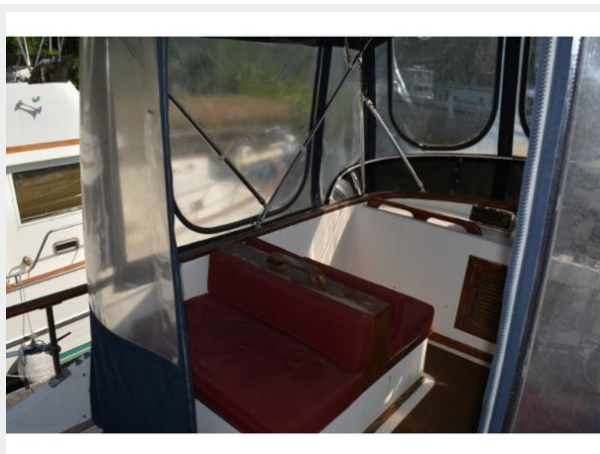
10



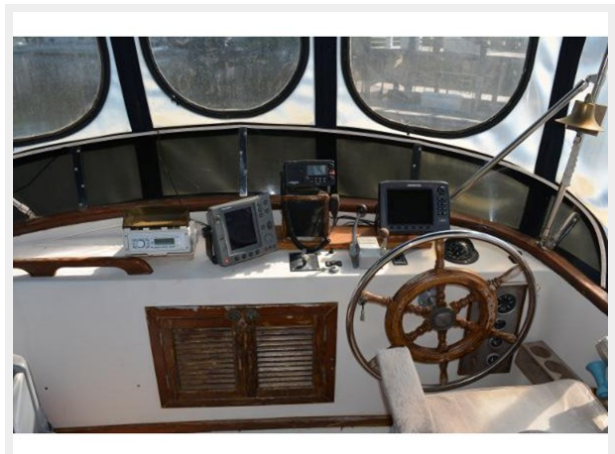
11



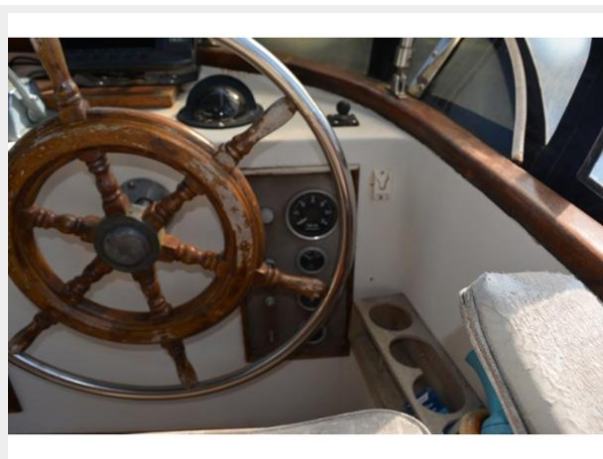
12



13



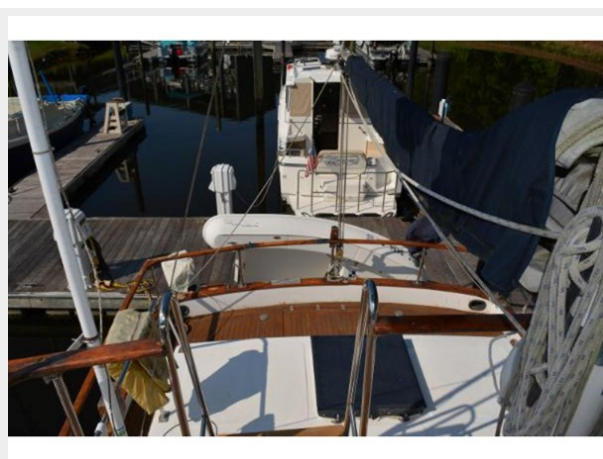
14



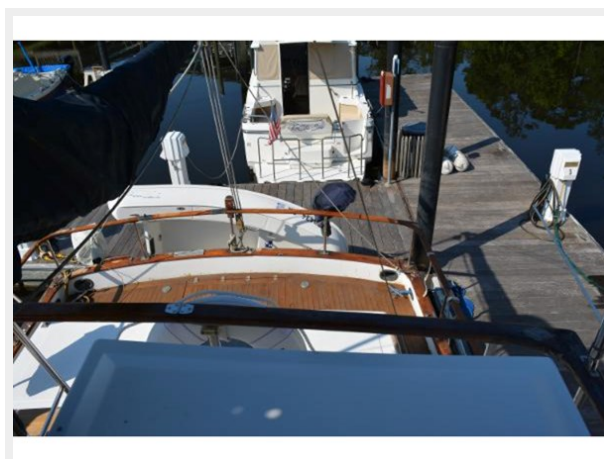
15



16



17



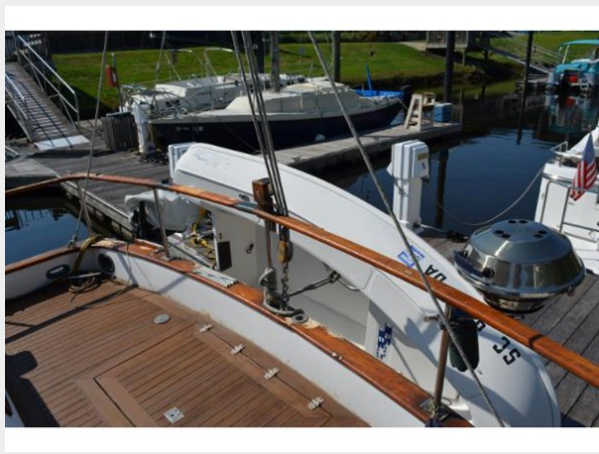
18



19



20



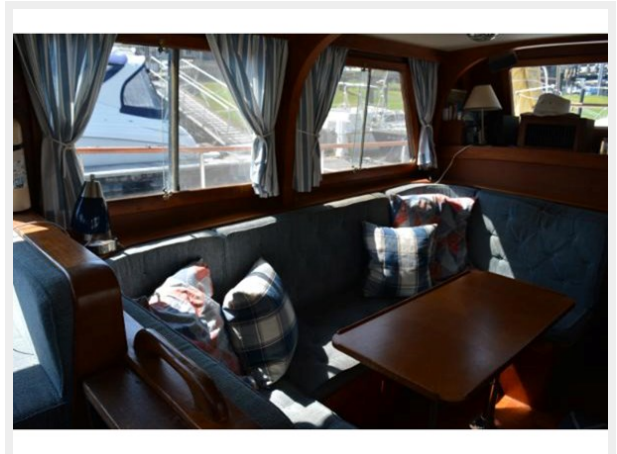
21



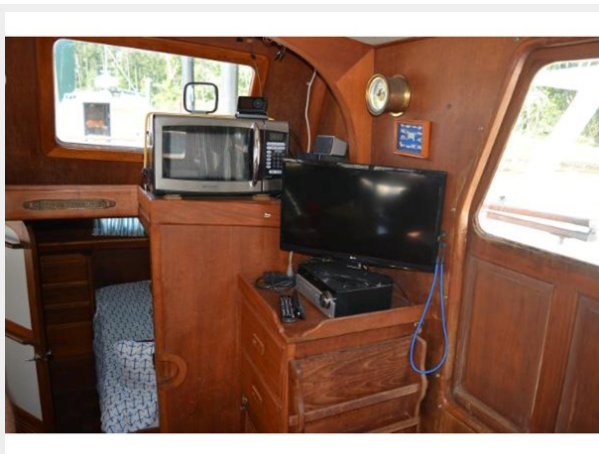
22



23



24



25



26



27



28



29



30



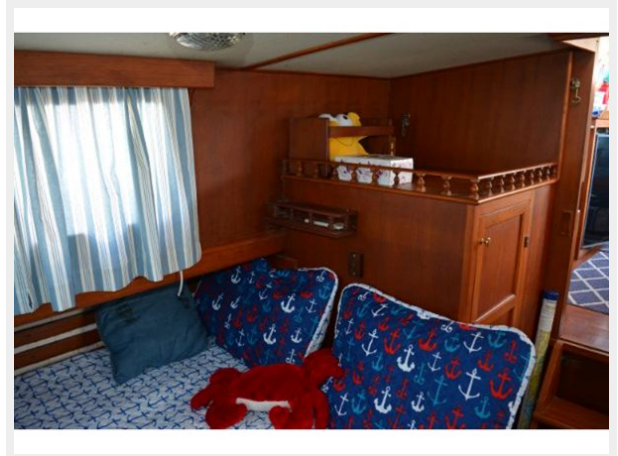
31



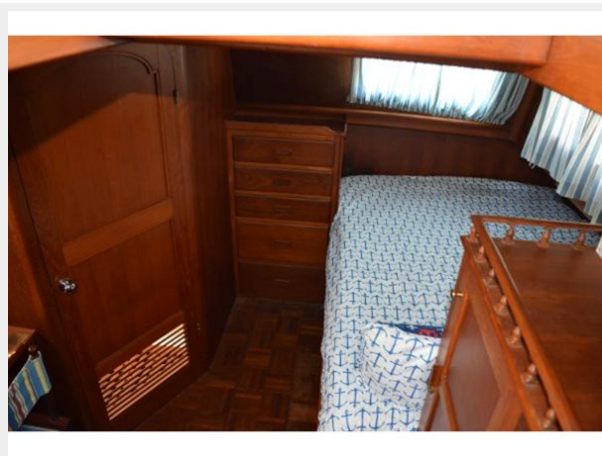
32



33



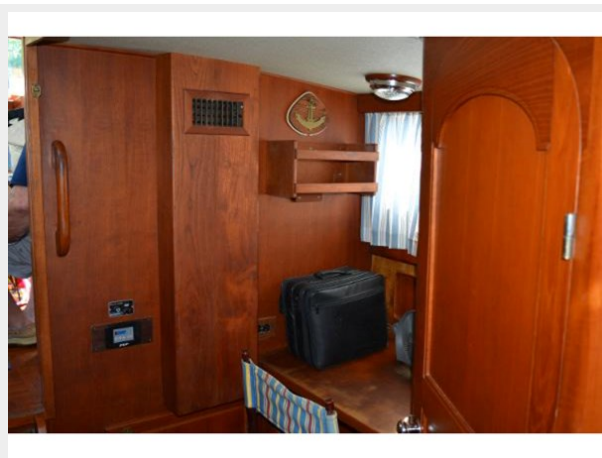
34



35



36



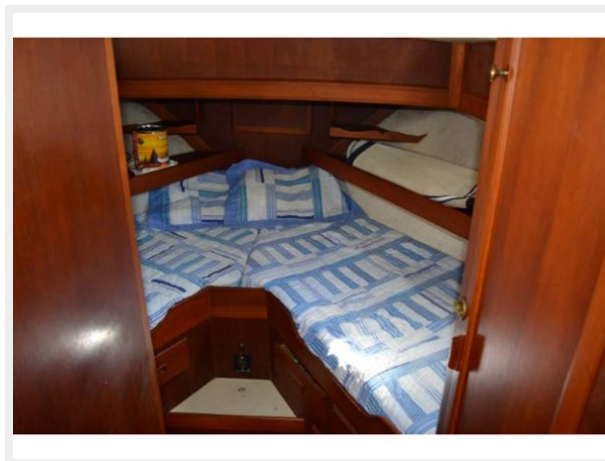
37



38



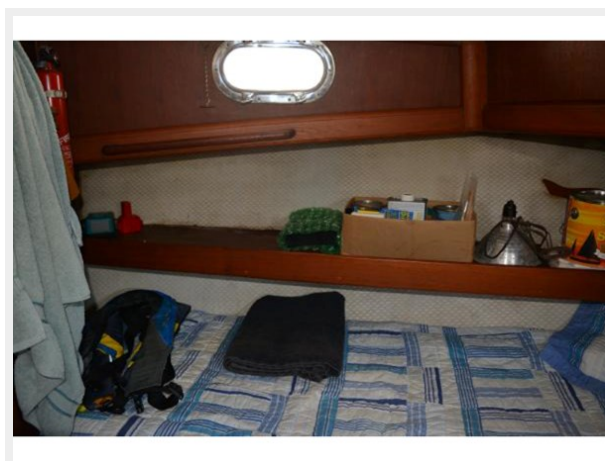
39



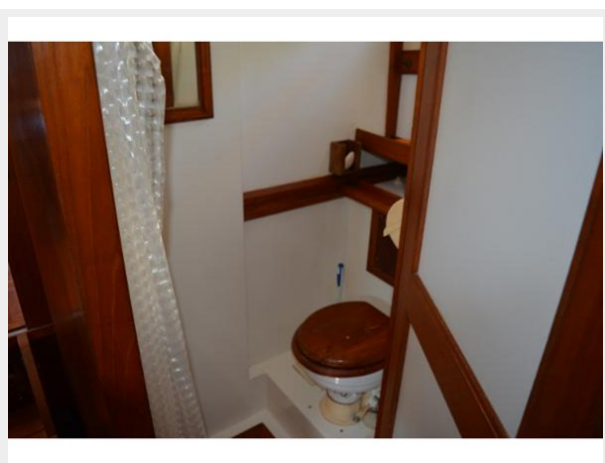
40



41



42



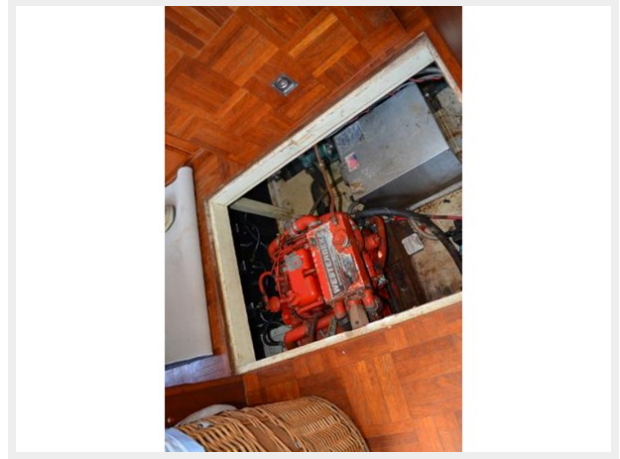
43



44



45



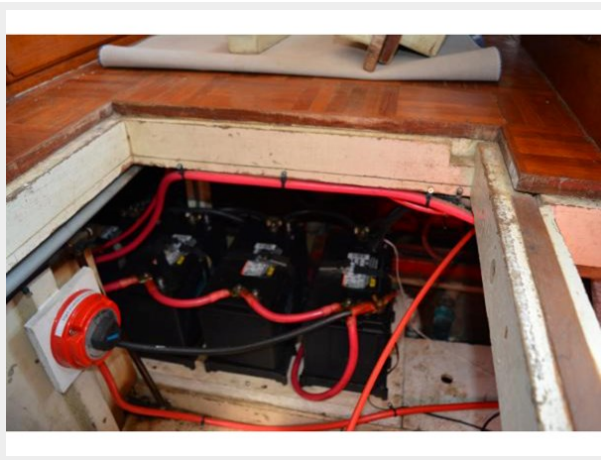
46



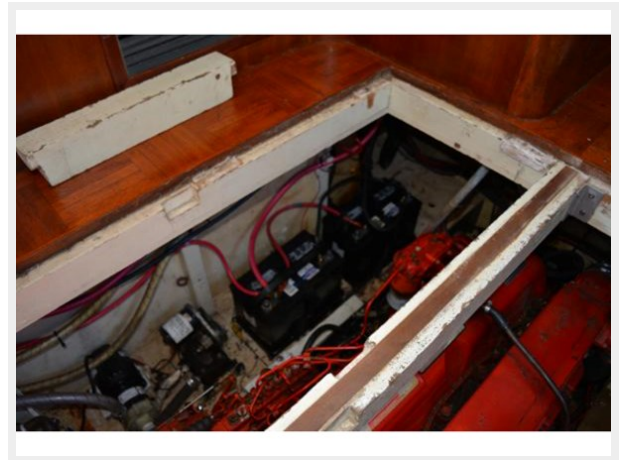
47



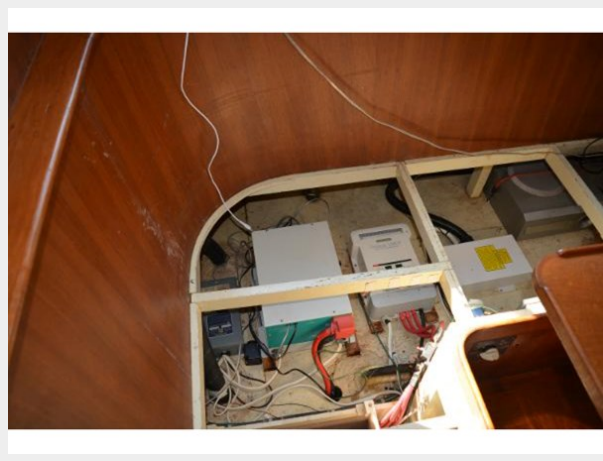
48



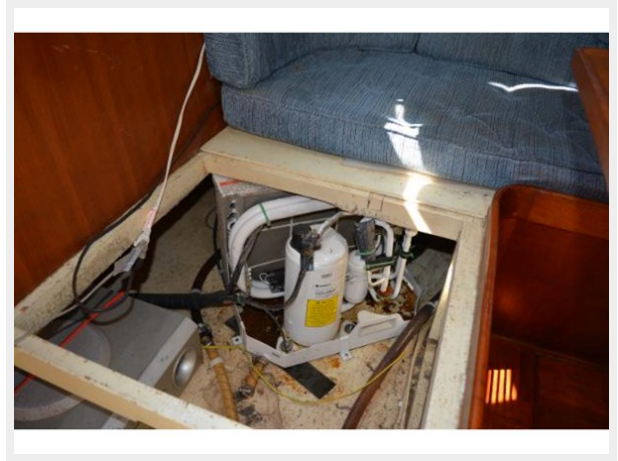
49



50



51



CONTACTS

Andrey Shestakov, leading yacht broker of the sales department of Shestakov Yacht Sales Inc. Shestakov Yacht Sales Inc., the official representative of the Miami/Fort Lauderdale FL headquarters.

Contact details

Email: andrey@shestakovyachtsales.com

Web: shestakovyachtsales.com/en/

Telephones

USA: +1(954)274-4435

Office hours

Monday – Saturday: **9:00 - 21:00** EDT

Sunday: **closed**

Address



Harbour Towne Marina, 850 NE 3rd St,
STE 213, Dania, FL 33004