

MEMORY MAKING — AQUILA



Builder: AQUILA

Year Built: 2016

Model: Catamaran

Price: PRICE ON APPLICATION

Location: United States

LOA: 48' 3" (14.71mm)

Beam: 23.5

Max Draft: 3' 10" (1.17mm)

Our experienced yacht broker, Andrey Shestakov, will help you choose and buy a yacht that best suits your needs **Memory Making — AQUILA** from our catalogue. Presently, at Shestakov Yacht Sales Inc., we have a wide variety of yachts available on our sale's list. We also work in close contact with all the big yacht manufacturers from all over the world.

If you would like to buy a yacht **Memory Making — AQUILA** or would like help answering any questions concerning purchasing, selling or chartering a yacht, please call **+1(954)274-4435**

TABLE OF CONTENTS

TABLE OF CONTENTS	2
SPECIFICATIONS	4
Overview	4
Basic Information	4
Dimensions	4
Speed, Capacities and Weight	4
Accommodations	5
Hull and Deck Information	5
Engine Information	5
PHOTOS	6
memory8	6
memoery15	7
memory44	12
memory45	12
memory46	13
memory47	13
memory48	13
memory49	13
memory51	13
memory50	13
memory52	14
memory53	14
memory54	14
memory55	14
CONTACTS	15
Contact details	15
Telephones	15
Office hours	15

Address

15

SPECIFICATIONS

Overview

"Memory Making" the best opportunity for a 48 Aquila currently on the market. Built originally as a demo yacht, she is fully loaded with all the options.

This is an awesome live-aboard option with 3 stateroom/3 head layout, upgraded premium interior package, air-conditioned flybridge with appliances and updated enclosure, SAT-TV, and an extra 100-gallon fuel tank for the generator.

- Volvo D6 370hp Direct Drive Engines (725 hours)
- Northern Lights Generator.
- Air-Conditioned Flybridge with Ice Maker, Grill, Sink, and Fridge
- Updated Flybridge Enclosure
- Replaced/Upgraded Shafts and Props
- (2) Bow Thrusters
- Raymarine Electronics Package
- 48,000BTU Chiller AC System
- Additional Galley Fridge
- New Underwater Lights
- SeaDek Flooring
- Davit

Basic Information

Category: Catamaran

Model Year: 2016

Year Built: 2016

Country: United States

Dimensions

LOA: 48' 3" (14.71mm)

Beam: 23.5

Max Draft: 3' 10" (1.17mm)

Speed, Capacities and Weight

Water Capacity: 150 Gallons

Fuel Capacity: 356 Gal Gallons

Accommodations

Total Cabins: 3

Total Heads: 3

Hull and Deck Information

Hull Material: Fiberglass

Engine Information

Engines: 2

Manufacturer: Volvo

Engine Type: Inboard

Fuel Type: Diesel

PHOTOS



memory8



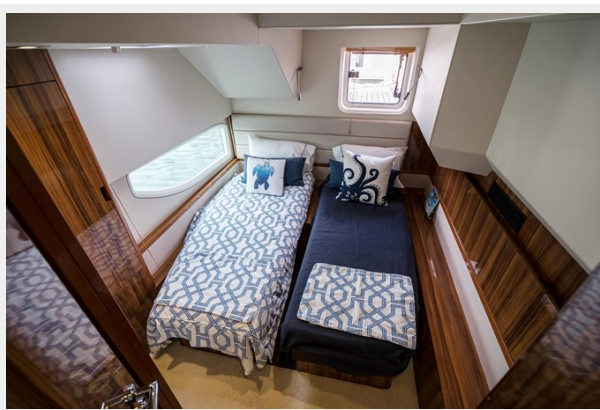


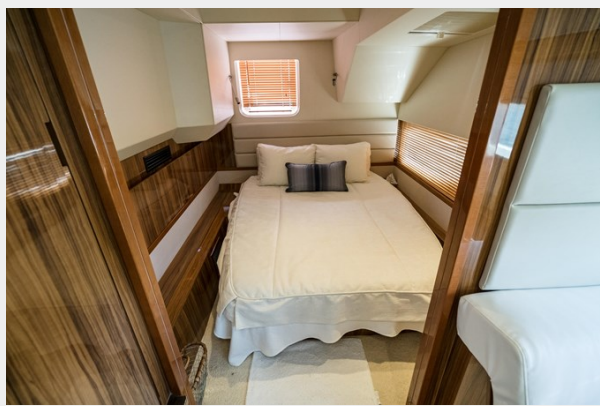
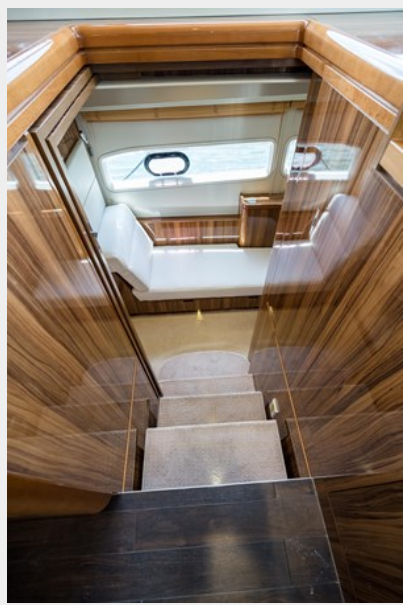
memoery15

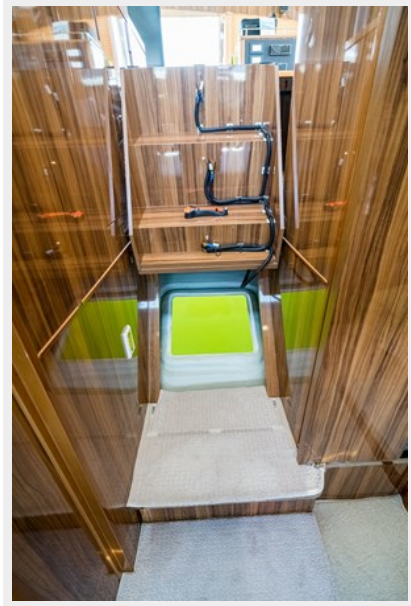












memory44

memory45



memory46



memory47



memory48



memory49



memory51



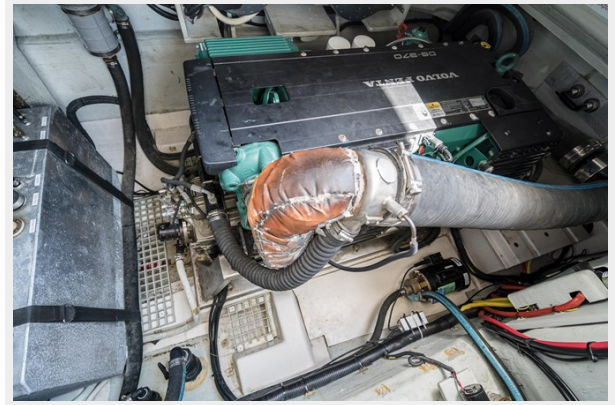
memory50



memory52



memory53



memory54



memory55



CONTACTS

Andrey Shestakov, leading yacht broker of the sales department of Shestakov Yacht Sales Inc. Shestakov Yacht Sales Inc., the official representative of the Miami/Fort Lauderdale FL headquarters.

Contact details

Email: andrey@shestakovyachtsales.com

Web: shestakovyachtsales.com/en/

Telephones

USA: +1(954)274-4435

Office hours

Monday – Saturday: **9:00 - 21:00** EDT

Sunday: **closed**

Address



Harbour Towne Marina, 850 NE 3rd St,
STE 213, Dania, FL 33004