

DANDE GIRL — HERITAGE EAST



Builder: HERITAGE EAST

Year Built: 1989

Model: Motor Yacht

Price: PRICE ON APPLICATION

Location: United States

LOA: 44' (13.41mm)

Beam: 13.58

Max Draft: 4' (1.22mm)

Cruise Speed: 17 Knots Kts. (20 MPH)

Max Speed: 23 Knots Kts. (26 MPH)

Our experienced yacht broker, Andrey Shestakov, will help you choose and buy a yacht that best suits your needs **Dande Girl — HERITAGE EAST** from our catalogue. Presently, at Shestakov Yacht Sales Inc., we have a wide variety of yachts available on our sale's list. We also work in close contact with all the big yacht manufacturers from all over the world.

If you would like to buy a yacht **Dande Girl — HERITAGE EAST** or would like help answering any questions concerning purchasing, selling or chartering a yacht, please call **+1(954)274-4435**

TABLE OF CONTENTS

TABLE OF CONTENTS	2
SPECIFICATIONS	5
Overview	5
Basic Information	5
Dimensions	5
Speed, Capacities and Weight	5
Accommodations	5
Hull and Deck Information	6
Engine Information	6
PHOTOS	7
0_2789367_overview	7
2_2789367_starboard_side	7
3_2789367_front_keel	7
4_2789367_starboard_stern	7
5_2789367_stern	8
6_2789367_starboard	8
7_2789367_looking_aft_starboard	8
8_2789367_brow	8
9_2789367_looking_aft_port	9
10_2789367_anchor	9
11_2789367_bow_port	9
12_2789367_sundeck_forward_port	9
14_2789367_sundeck_starboard_stern	10
13_2789367_sundeck_port_stern	10
15_2789367_sundeck_starboard_forward	10
16_2789367_aft_sink	10
17_2789367_sundeck_counter	11
18_2789367_heading_to_the_bridge	11

19_2789367_bridge	11
20_2789367_bridge_table	11
21_2789367_bridge_looking_aft	11
22_2789367_bridge_helm	11
23_2789367_bridge_helm_port	12
24_2789367_bridge_helm_starboard	12
25_2789367_bridge_elect	12
26_2789367_new_canvas	12
28_2789367_sundeck_to_main_salon	12
27_2789367_new_canvas	12
29_2789367_enter_the_salon	13
30_2789367_main_salon	13
31_2789367_starboard_salon_seating	13
32_2789367_salon_looking_aft	13
34_2789367_entering_the_galley	14
33_2789367_salon_aft_starboard	14
35_2789367_main_galley	14
36_2789367_galley_sink	14
38_2789367_door_into_the_front_berth	15
37_2789367_dinette	15
39_2789367_front_berthing	15
40_2789367_deskmakeup	15
42_2789367_front_head	16
41_2789367_overall_front_berths	16
43_2789367_stairs_coming_from_the_galley	16
44_2789367_stairs_into_aft_stateroom	16
45_2789367_aft_stateroom	17
46_2789367_looking_port_in_stateroom	17
47_2789367_aft_locker	17

48_2789367_looking_starboard_to_head	17
49_2789367_large_master_shower	18
50_2789367_lower_helm	18
52_2789367_breakers	18
51_2789367_lower_helm_switches	18
53_2789367_tank_tender_fuel_gauge	19
54_2789367_lower_helm_gauges	19
55_2789367_entering_the_main_engine_room	19
56_2789367_starboard_engine	19
57_2789367_starboard_engine	20
58_2789367_port_engine	20
60_2789367_generator	20
59_2789367_port_engine	20
61_2789367_shafts_dripless	21
62_2789367_racors	21
63_2789367_exhuast_starboard	21
64_2789367_oil_changing_system	21
66_2789367_main_batteries	22
65_2789367_middle_bilge	22
67_2789367_bow_thruster	22
68_2789367_name	22
69_2789367_aft_stern_running	22
CONTACTS	23
Contact details	23
Telephones	23
Office hours	23
Address	23

SPECIFICATIONS

Overview

“Dande Girl” is a 1989 Heritage East 44’ with newer (2013) Cummins engines. Dande Girl was a freshwater boat for 20 years of her life, until moving down to Florida. She has done the Great Loop and has done extensive travel up and down the east coast. She is in great condition for this original owner and maintained to the highest level, the wood work is amazing. This boat will not disappoint due to all the upgrades and new components, Dande Girl is ready for the next adventure.

Basic Information

Category: Motor Yacht

Model Year: 1989

Year Built: 1989

Country: United States

Dimensions

LOA: 44' (13.41mm)

Beam: 13.58

Max Draft: 4' (1.22mm)

Speed, Capacities and Weight

Cruise Speed: 17 Knots Kts. (20 MPH)

Max Speed: 23 Knots Kts. (26 MPH)

Water Capacity: 284 Gallons

Holding Tank: 40 Gal Gallons

Fuel Capacity: 406 Gal Gallons

Accommodations

Total Cabins: 3

Sleeps: 6

Total Heads: 2

Hull and Deck Information

Hull Material: Fiberglass

Engine Information

Engines: 2

Manufacturer: Cummins

Engine Type: Inboard

Fuel Type: Diesel

PHOTOS

0_2789367_overview



2_2789367_starboard_side



3_2789367_front_keel



4_2789367_starboard_stern



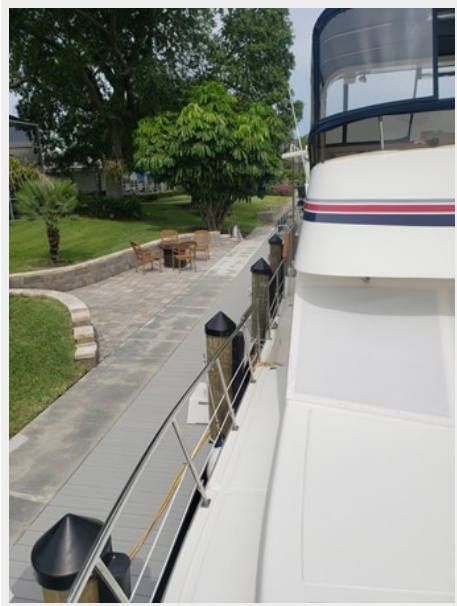
5_2789367_stern



6_2789367_starboard



7_2789367_looking_aft_starboard



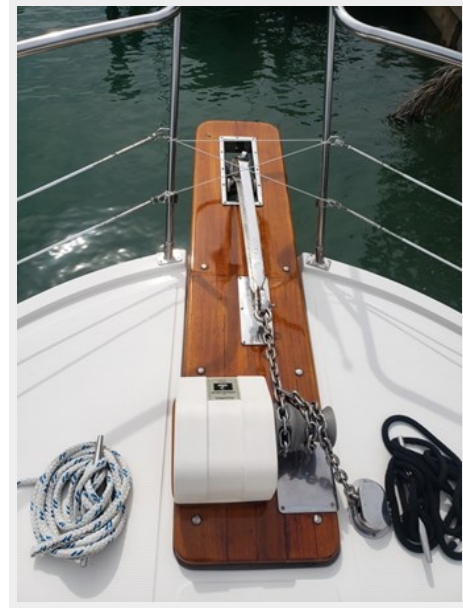
8_2789367_brow



9_2789367_looking_aft_port



10_2789367_anchor



11_2789367_bow_port



12_2789367_sundeck_forward_port



13_2789367_sundeck_port_stern



14_2789367_sundeck_starboard_stern



15_2789367_sundeck_starboard_forward



16_2789367_aft_sink



17_2789367_sundeck_counter



18_2789367_heading_to_the_bridge



19_2789367_bridge



20_2789367_bridge_table



21_2789367_bridge_looking_aft



22_2789367_bridge_helm



23_2789367_bridge_helm_port



24_2789367_bridge_helm_starboard



25_2789367_bridge_elect



26_2789367_new_canvas



27_2789367_new_canvas



28_2789367_sundeck_to_main_salon



29_2789367_enter_the_salon



30_2789367_main_salon



31_2789367_starboard_salon_seating



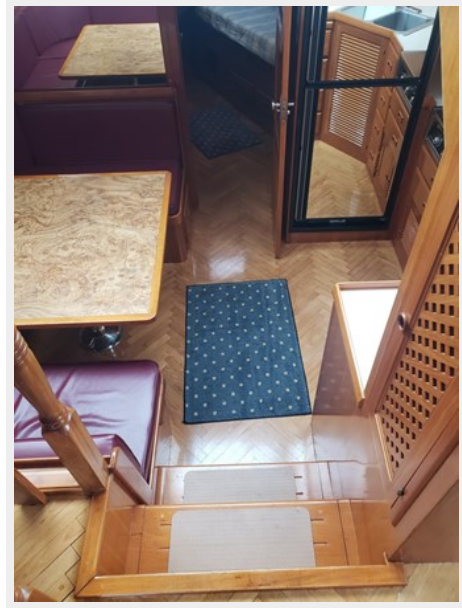
32_2789367_salon_looking_aft



33_2789367_salon_aft_starboard



34_2789367_entering_the_galley



35_2789367_main_galley



36_2789367_galley_sink



37_2789367_dinette



38_2789367_door_into_the_front_berth



39_2789367_front_berthing



40_2789367_deskmakeup



41_2789367_overall_front_berths



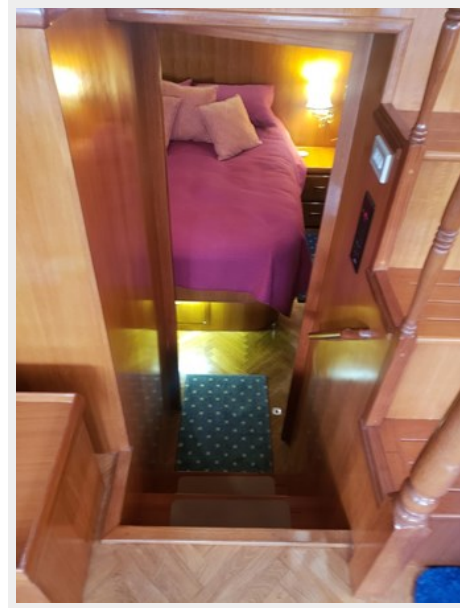
42_2789367_front_head



43_2789367_stairs_coming_from_the_galley



44_2789367_stairs_into_aft_stateroom



45_2789367_aft_stateroom



46_2789367_looking_port_in_stateroom



47_2789367_aft_locker



48_2789367_looking_starboard_to_head



49_2789367_large_master_shower



50_2789367_lower_helm



52_2789367_breakers



51_2789367_lower_helm_switches



53_2789367_tank_tender_fuel_gauge



54_2789367_lower_helm_gauges



55_2789367_entering_the_main_engine_room



56_2789367_starboard_engine



57_2789367_starboard_engine



58_2789367_port_engine



59_2789367_port_engine



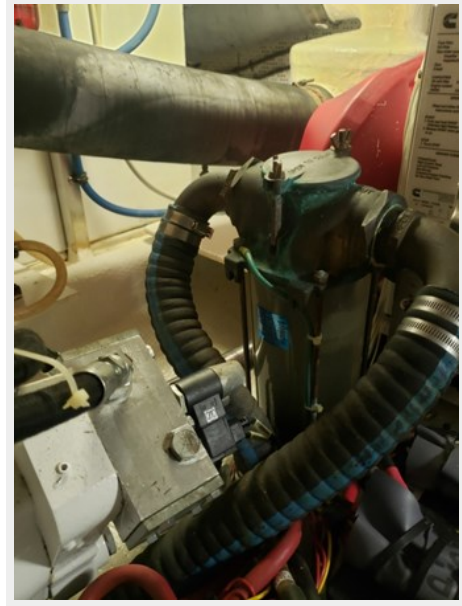
60_2789367_generator



61_2789367_shafts_dripless



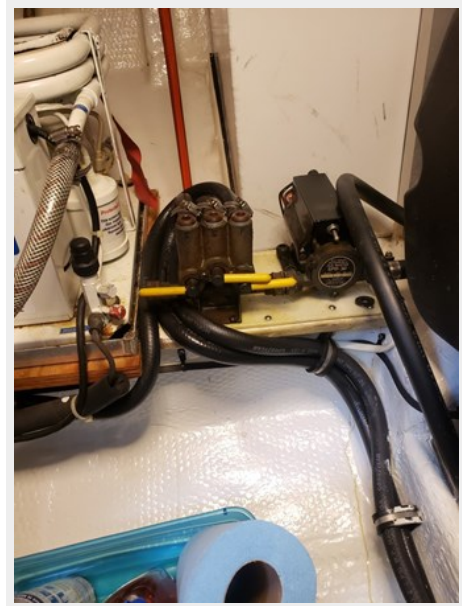
62_2789367_racors



63_2789367_exhuast_starboard



64_2789367_oil_changing_system



66_2789367_main_batteries



65_2789367_middle_bilge



67_2789367_bow_thruster



68_2789367_name



69_2789367_aft_stern_running



CONTACTS

Andrey Shestakov, leading yacht broker of the sales department of Shestakov Yacht Sales Inc. Shestakov Yacht Sales Inc., the official representative of the Miami/Fort Lauderdale FL headquarters.

Contact details

Email: andrey@shestakovyachtsales.com

Web: shestakovyachtsales.com/en/

Telephones

USA: +1(954)274-4435

Office hours

Monday – Saturday: **9:00 - 21:00** EDT

Sunday: **closed**

Address



Harbour Towne Marina, 850 NE 3rd St,
STE 213, Dania, FL 33004