

NIRVANA — RODMAN



Builder: RODMAN

Year Built: 2005

Model: Motor Yacht

Price: PRICE ON APPLICATION

Location: United States

LOA: 105' (32mm)

Beam: 19

Min Draft: 6' 4" (1.93mm)

Our experienced yacht broker, Andrey Shestakov, will help you choose and buy a yacht that best suits your needs **NIRVANA — RODMAN** from our catalogue. Presently, at Shestakov Yacht Sales Inc., we have a wide variety of yachts available on our sale's list. We also work in close contact with all the big yacht manufacturers from all over the world.

If you would like to buy a yacht **NIRVANA — RODMAN** or would like help answering any questions concerning purchasing, selling or chartering a yacht, please call **+1(954)274-4435**

TABLE OF CONTENTS

TABLE OF CONTENTS	2
SPECIFICATIONS	4
Overview	4
Basic Information	7
Dimensions	7
Speed, Capacities and Weight	7
Accommodations	7
Hull and Deck Information	7
Engine Information	7
PHOTOS	8
8332292_20220525065027530_1_XLARGE	8
8332292_20220525065030526_1_XLARGE	8
731A3472-Edit	8
731A3476-Edit	8
731A3481-Edit	8
731A3485-Edit	8
731A3491-Edit	9
731A3495-Edit	9
731A3500-Edit	9
731A3505-Edit	9
731A3511-Edit	9
731A3472-Edit	9
731A3476-Edit	10
731A3481-Edit	10
731A3485-Edit	10
731A3491-Edit	10
731A3495-Edit	10
731A3500-Edit	10

731A3505-Edit	11
731A3511-Edit	11
CONTACTS	12
Contact details	12
Telephones	12
Office hours	12
Address	12

SPECIFICATIONS

Overview

Preliminary Listing. Full photos and video walkthrough coming soon.

This Rodman 105 is in excellent condition after a complete interior & exterior refit in 2022. Modern & tasteful finishes throughout the entire vessel. The perfect platform for entertaining large groups, whether for private or charter use. All maintenance is up to date on reliable and powerful CAT C32 engines with only 850 original hours. Rodman has been constructing solid, seaworthy vessels for over 40 years and is trusted by pleasure boat owners, commercial operations, and militaries worldwide. The owner is looking to move down to a more manageable day yacht and encourages all offers.

US Tax & Duty Paid

REFIT 2022

- All new soft goods throughout
- New headliners
- Updated carpet in staterooms
- Added a flybridge jacuzzi
- New vinyl flooring
- Refinished teak
- New black/grey water pumps
- New water pumps
- New fixtures/heads/tiles in master & VIP stateroom
- New JL Audio sound system
- LED tricolor lighting throughout entire boat
- Custom laser lighting system for entertaining on flybridge and aft deck
- Remote operated curtains throughout entire boat
- New TVs in salon & staterooms
- Updated Garmin GPS & Radar
- Many More

Main Salon

- All new soft goods
- New flooring
- Electric curtains with remote control
- Full size bar
- 72 Inch Samsung TV
- JL Audio

Aft Deck

- U-shaped seating area with wood dining table
- Custom multi-colored light system
- JL Audio
- Large hydraulic swim platform with capacity for jet ski or tender

Flybridge

- Abundant lounge seating port & starboard dining tables
- New jacuzzi
- JL Audio
- Custom multi-colored light system
- Outdoor shower
- Radar arch with ability to add bimini top
- Full upper helm station

Master Stateroom

- Center Island Queen Berth
- Sofa to port
- Massive walk-in closet
- His & hers heads and vanity
- Connected by shared overhead rain shower
- New flooring
- New bedding

VIP Stateroom

- Queen berth
- Sofa to port
- New flooring
- New bedding
- New headliners
- Large hanging locker
- Head w/ separate enclosed shower

Additional Staterooms/Crew Quarters

- Sleeping for an additional 5 in 3 cabins.
- One private captain's quarters with its own head and shower.
- Additional shared head
- Two guest cabins each with dual bunk beds and a shared head/shower.
- Use could be customized based on guest needs. Extremely well equipped with 5 crew or a smaller crew of 3 and sleeping for 2 children.

- Dining area
- Miele Washer/Dryer combo

Galley

- Ability to fully enclose from salon
- Miele Fridge/Freezer
- Toshiba Microwave
- 4 burner electric stove
- Miele range hood
- Miele convection oven
- Fresa Espresso Machine
- Miele dishwasher

Helm

- Centered helm station, good visibility for captain
- Lots of redundant systems
- Updated Garmin GPS w/ integrated radar
- Furuno GPS
- Simrad Autopilot (2)
- VHF (multiple)
- CAT diagnostic screens
- Bow thruster
- Lounge seating to port
- Day head access

Mechanical/Engine Room

- 2 x 50 KW Caterpillar Generators w/ low hours (services up to date)
- CAT C32 diesels w/ only 850 original hours (services up to date)
- Freshly detailed engine room
- New bilge pumps
- Updated and recertified fire suppression system

Other Features

- Watermaker
- Fin stabilizers

Additional Units

- 12 ft. AB Inflatables tender with 70 HP Yamaha

Basic Information

Category: Motor Yacht

Sub Category: Flybridge

Model Year: 2005

Year Built: 2005

Country: United States

Dimensions

LOA: 105' (32mm)

Beam: 19

Min Draft: 6' 4" (1.93mm)

Speed, Capacities and Weight

Water Capacity: 500 Gallons

Fuel Capacity: 3300 Gal Gallons

Accommodations

Total Cabins: 5

Total Heads: 5

Hull and Deck Information

Hull Material: Fiberglass

Engine Information

Engines: 1

Manufacturer: Caterpillar

PHOTOS

8332292_20220525065027530_1_XLARGE



8332292_20220525065030526_1_XLARGE



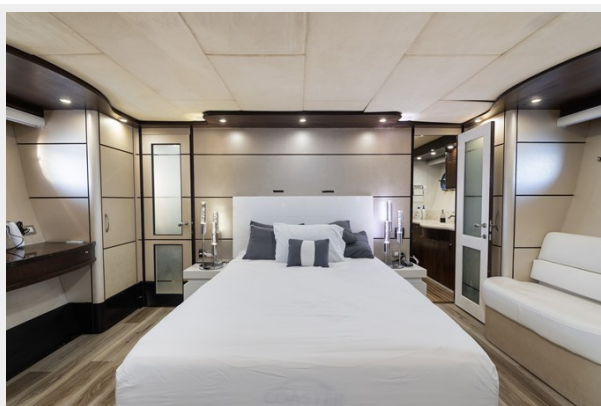
731A3472-Edit



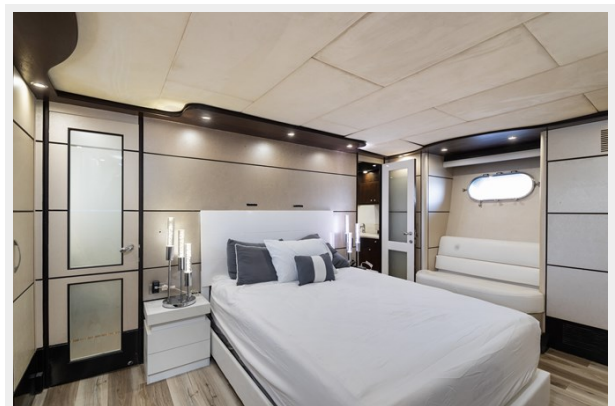
731A3476-Edit



731A3481-Edit



731A3485-Edit



731A3491-Edit



731A3495-Edit



731A3500-Edit



731A3505-Edit



731A3511-Edit



731A3472-Edit



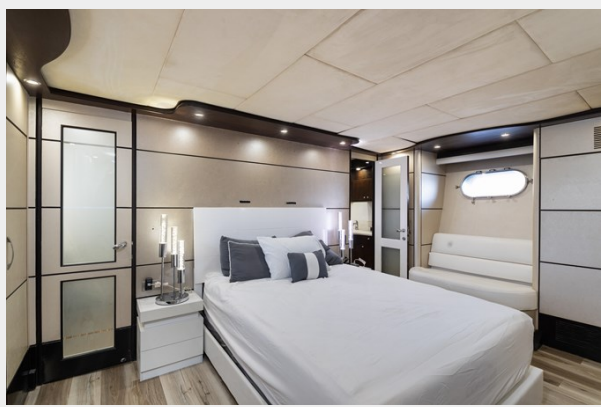
731A3476-Edit



731A3481-Edit



731A3485-Edit



731A3491-Edit



731A3495-Edit



731A3500-Edit



731A3505-Edit



731A3511-Edit



CONTACTS

Andrey Shestakov, leading yacht broker of the sales department of Shestakov Yacht Sales Inc. Shestakov Yacht Sales Inc., the official representative of the Miami/Fort Lauderdale FL headquarters.

Contact details

Email: andrey@shestakovyachtsales.com

Web: shestakovyachtsales.com/en/

Telephones

USA: +1(954)274-4435

Office hours

Monday – Saturday: **9:00 - 21:00** EDT

Sunday: **closed**

Address



Harbour Towne Marina, 850 NE 3rd St,
STE 213, Dania, FL 33004