

CLASSIC ROCK — GRAND BANKS



Builder: GRAND BANKS

Year Built: 1974

Model: Trawler Yacht

Price: PRICE ON APPLICATION

LOA: 42' (12.8mm)

Beam: 14.08

Min Draft: 4' 2" (1.27mm)

Max Draft: 4' 2" (1.27mm)

Cruise Speed: 8.5 Knots Kts. (10 MPH)

Max Speed: 9.5 Knots Kts. (11 MPH)

Our experienced yacht broker, Andrey Shestakov, will help you choose and buy a yacht that best suits your needs **Classic Rock — GRAND BANKS** from our catalogue. Presently, at Shestakov Yacht Sales Inc., we have a wide variety of yachts available on our sale's list. We also work in close contact with all the big yacht manufacturers from all over the world.

If you would like to buy a yacht **Classic Rock — GRAND BANKS** or would like help answering any questions concerning purchasing, selling or chartering a yacht, please call **+1(954)274-4435**

TABLE OF CONTENTS

TABLE OF CONTENTS	2
SPECIFICATIONS	5
Overview	5
Basic Information	5
Dimensions	5
Speed, Capacities and Weight	5
Accommodations	5
Hull and Deck Information	5
Engine Information	6
PHOTOS	7
1_2789679_42_grand_banks_port_forward_profile2	7
0_2789679_42_grand_banks_port_forward_profile1	7
2_2789679_42_grand_banks_port_forward_profile3	7
3_2789679_42_grand_banks_starboard_forward_profile1	7
4_2789679_42_grand_banks_starboard_forward_profile2	7
5_2789679_42_grand_banks_starboard_aft_profile	7
6_2789679_42_grand_banks_anchor_windlass	8
7_2789679_42_grand_banks_foredeck	8
9_2789679_42_grand_banks_port_side_deck1	8
8_2789679_42_grand_banks_foredeck_aft	8
10_2789679_42_grand_banks_port_side_deck2	8
11_2789679_42_grand_banks_starboard_side_deck1	8
12_2789679_42_grand_banks_starboard_side_deck2	9
13_2789679_42_grand_banks_flybridge_forward	9
14_2789679_42_grand_banks_flybridge_aft	9
15_2789679_42_grand_banks_flybridge_helm1	9
16_2789679_42_grand_banks_flybridge_helm2	9
17_2789679_42_grand_banks_flybridge_multi_function_display	9

18_2789679_42_grand_banks_flybridge_table	10
19_2789679_42_grand_bank_trunk_cabin_forward	10
20_2789679_42_grand_banks_trunk_cabin_aft	10
21_2789679_42_grand_banks_mast_base	10
22_2789679_42_grand_banks_tender_outboard	10
23_2789679_42_grand_banks_aftdeck	10
24_2789679_42_grand_banks_aftdeck_port	11
25_2789679_42_grand_banks_aftdeck_starboard	11
26_2789679_42_grand_banks_tender_davits	11
27_2789679_42_grand_banks_swimplatform	11
28_2789679_42_grand_banks_salon_forward	11
29_2789679_42_grand_banks_salon_aft	11
30_2789679_42_grand_banks_salon_port	11
31_2789679_42_grand_banks_salon_starboard	11
32_2789679_42_grand_banks_salon_starboard_seating	12
33_2789679_42_grand_banks_salon_table	12
34_2789679_42_grand_banks_galley_port_forward1	12
35_2789679_42_grand_banks_galley_port_forward2	12
36_2789679_42_grand_banks_galley_port_aft	12
37_2789679_42_grand_banks_lower_helm1	12
38_2789679_42_grand_banks_lower_helm2	12
39_2789679_42_grand_banks_master_stateroom	12
40_2789679_42_grand_banks_master_stateroom_port	13
41_2789679_42_grand_banks_master_stateroom_starboard	13
43_2789679_42_grand_banks_master_stateroom_head	13
42_2789679_	13
44_2789679_	13
45_2789679_42_grand_banks_guest_stateroom_head	13
46_2789679_42_grand_banks_engine_room_forward	14

47_2789679_42_grand_banks_engine_room_aft	14
49_2789679_42_grand_banks_port_racor_fuel_filter	14
48_2789679_42_grand_banks_port_main_engine	14
52_2789679_42_grand_banks_starboard_racor_fuel_filter	14
50_2789679_42_grand_banks_starboard_main_engine	14
53_2789679_42_grand_banks_fuel_manifold	15
54_2789679_42_grand_banks_port_fuel_tank	15
55_2789679_42_grand_banks_starboard_fuel_tank	15
56_2789679_42_grand_banks_water_heater	15
57_2789679_42_grand_banks_electrical_panel	15
58_2789679_42_grand_banks_generator_panel	15
59_2789679_42_grand_banks_generator1	16
60_2789679_42_grand_banks_generator2	16
61_2789679_42_grand_banks_battery_charger	16
62_2789679_42_grand_banks_underway	16
CONTACTS	17
Contact details	17
Telephones	17
Office hours	17
Address	17

SPECIFICATIONS

Overview

Classic Rock is a 1974 42' Grand Banks that has been extensively refitted. She offers twin John Deere 120 HP main engines, Northern Lights 8 kW generator, replaced aluminum fuel tanks, removed teak decks and coring repaired and cork decks installed, windows replaced, Kato tender davits, updated electronics, updated interior plus much more. Classic Rock is a very well-maintained and updated classic Grand Banks. She is a perfect Great Loop candidate with her attainable 13'3" height.

Basic Information

Category: Trawler Yacht

Model Year: 1974

Year Built: 1974

Dimensions

LOA: 42' (12.8mm)

LWL: 40' 6" (12.34mm)

Beam: 14.08

Min Draft: 4' 2" (1.27mm)

Max Draft: 4' 2" (1.27mm)

Speed, Capacities and Weight

Cruise Speed: 8.5 Knots Kts. (10 MPH)

Max Speed: 9.5 Knots Kts. (11 MPH)

Water Capacity: 265 Gallons

Holding Tank: 60 Gal Gallons

Fuel Capacity: 500 Gal Gallons

Accommodations

Total Cabins: 2

Sleeps: 4

Total Heads: 2

Hull and Deck Information

Hull Material: Fiberglass

Engine Information

Engines: 2

Manufacturer: John Deere

Engine Type: Inboard

Fuel Type: Diesel

PHOTOS

1_2789679_42_grand_banks_port_forward_profile2

0_2789679_42_grand_banks_port_forward_profile1



2_2789679_42_grand_banks_port_forward_profile3

3_2789679_42_grand_banks_starboard_forward_profile1



4_2789679_42_grand_banks_starboard_forward_profile2

5_2789679_42_grand_banks_starboard_aft_profile



6_2789679_42_grand_banks_anchor_windlass



7_2789679_42_grand_banks_foredeck



8_2789679_42_grand_banks_foredeck_aft



9_2789679_42_grand_banks_port_side_deck1



10_2789679_42_grand_banks_port_side_deck2



11_2789679_42_grand_banks_starboard_side_deck1



12_2789679_42_grand_banks_starboard_side_deck2



13_2789679_42_grand_banks_flybridge_forward



14_2789679_42_grand_banks_flybridge_aft



15_2789679_42_grand_banks_flybridge_helm1



16_2789679_42_grand_banks_flybridge_helm2



17_2789679_42_grand_banks_flybridge_multi_function_display



18_2789679_42_grand_banks_flybridge_table



19_2789679_42_grand_bank_trunk_cabin_forward



20_2789679_42_grand_banks_trunk_cabin_aft



21_2789679_42_grand_banks_mast_base



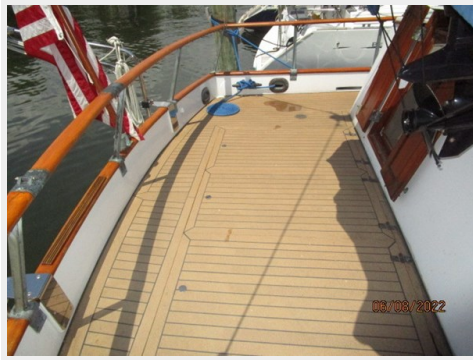
22_2789679_42_grand_banks_tender_outboard



23_2789679_42_grand_banks_aftdeck



24_2789679_42_grand_banks_aftdeck_port



25_2789679_42_grand_banks_aftdeck_starboard



26_2789679_42_grand_banks_tender_davits



27_2789679_42_grand_banks_swimplatform



28_2789679_42_grand_banks_salon_forward



29_2789679_42_grand_banks_salon_aft



30_2789679_42_grand_banks_salon_port



31_2789679_42_grand_banks_salon_starboard



32_2789679_42_grand_banks_salon_starboard_seating



33_2789679_42_grand_banks_salon_table



34_2789679_42_grand_banks_galley_port_forward1



35_2789679_42_grand_banks_galley_port_forward2



36_2789679_42_grand_banks_galley_port_aft



37_2789679_42_grand_banks_lower_helm1



38_2789679_42_grand_banks_lower_helm2



39_2789679_42_grand_banks_master_stateroom



40_2789679_42_grand_banks_master_stateroom_port 41_2789679_42_grand_banks_master_stateroom_starboard

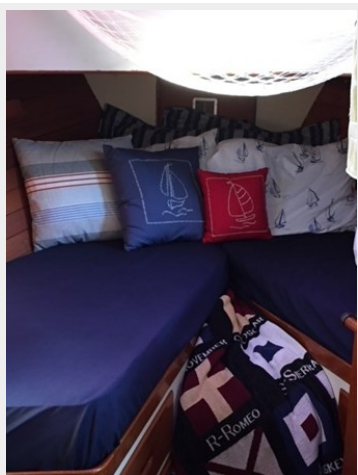


43_2789679_42_grand_banks_master_stateroom_head

42_2789679_



44_2789679_



45_2789679_42_grand_banks_guest_stateroom_head



46_2789679_42_grand_banks_engine_room_forward



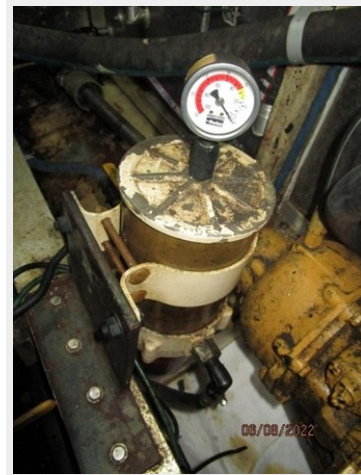
47_2789679_42_grand_banks_engine_room_aft



48_2789679_42_grand_banks_port_main_engine



49_2789679_42_grand_banks_port_racor_fuel_filter



50_2789679_42_grand_banks_starboard_main_engine



52_2789679_42_grand_banks_starboard_racor_fuel_filter



53_2789679_42_grand_banks_fuel_manifold



54_2789679_42_grand_banks_port_fuel_tank



55_2789679_42_grand_banks_starboard_fuel_tank



56_2789679_42_grand_banks_water_heater



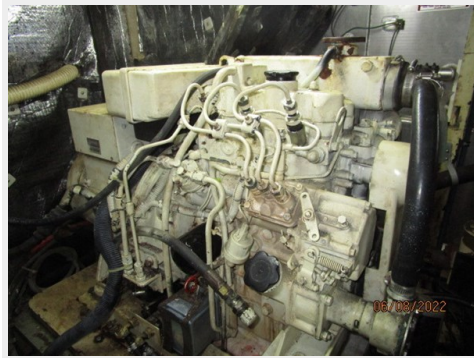
57_2789679_42_grand_banks_electrical_panel



58_2789679_42_grand_banks_generator_panel



59_2789679_42_grand_banks_generator1



60_2789679_42_grand_banks_generator2



61_2789679_42_grand_banks_battery_charger



62_2789679_42_grand_banks_underway



CONTACTS

Andrey Shestakov, leading yacht broker of the sales department of Shestakov Yacht Sales Inc. Shestakov Yacht Sales Inc., the official representative of the Miami/Fort Lauderdale FL headquarters.

Contact details

Email:
andrey@shestakovyachtsales.com

Web: shestakovyachtsales.com/en/

Telephones

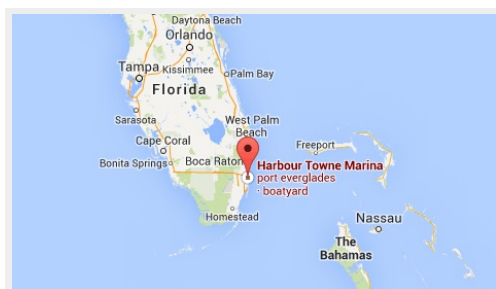
USA: +1(954)274-4435

Office hours

Monday – Saturday: **9:00 - 21:00** EDT

Sunday: **closed**

Address



Harbour Towne Marina, 850 NE 3rd St,
STE 213, Dania, FL 33004