

SIRACH — SABRE YACHTS



Builder: SABRE YACHTS

Year Built: 1983

Model: Cruising or Racing Sailboat

Price: PRICE ON APPLICATION

Location: United States

LOA: 37' 10" (11.53mm)

Beam: 11.5

Min Draft: 4' 3" (1.3mm)

Max Draft: 8' (2.44mm)

Our experienced yacht broker, Andrey Shestakov, will help you choose and buy a yacht that best suits your needs **Sirach — SABRE YACHTS** from our catalogue. Presently, at Shestakov Yacht Sales Inc., we have a wide variety of yachts available on our sale's list. We also work in close contact with all the big yacht manufacturers from all over the world.

If you would like to buy a yacht **Sirach — SABRE YACHTS** or would like help answering any questions concerning purchasing, selling or chartering a yacht, please call **+1(954)274-4435**

TABLE OF CONTENTS

TABLE OF CONTENTS	2
SPECIFICATIONS	4
Overview	4
Basic Information	4
Dimensions	4
Speed, Capacities and Weight	4
Accommodations	4
Hull and Deck Information	5
Engine Information	5
PHOTOS	6
Layout	6
08-25-2021 New London	6
IMG_8964	6
IMG_8956	6
IMG_8953	7
IMG_8911	7
IMG_8906	7
IMG_8907	7
IMG_8943	7
IMG_9037	7
IMG_9039	8
IMG_9040	8
IMG_9038	8
IMG_9026	8
IMG_9041	8
IMG_9030	8
IMG_9031	9
IMG_9032	9

IMG_9042	9
IMG_9036	9
IMG_8939	10
IMG_9034	10
IMG_9027	10
IMG_9023	10
IMG_9024	10
IMG_9020	10
IMG_9021	11
CONTACTS	12
Contact details	12
Telephones	12
Office hours	12
Address	12

SPECIFICATIONS

Overview

Good performance, quality construction, and comfortable accommodations describe the Sabre 38. *Sirach* features the shoal draft centerboard keel, and recent updates to electronics, batteries, standing rigging, Dodger & Bimini, and interior upholstery. The bottom was recently stripped and barrier coated; and the engine was rebuilt in 2018. If you are looking for a boat that will give you comfort and performance with traditional looks and interior space at an affordable price, come and take a look at *Sirach*.

Basic Information

Category: Cruising or Racing Sailboat

Model Year: 1983

Year Built: 1983

Country: United States

Dimensions

LOA: 37' 10" (11.53mm)

LWL: 31' 2" (9.5mm)

Beam: 11.5

Min Draft: 4' 3" (1.3mm)

Max Draft: 8' (2.44mm)

Speed, Capacities and Weight

Water Capacity: 94 Gallons

Holding Tank: 30 Gal Gallons

Fuel Capacity: 30 Gal Gallons

Accommodations

Total Cabins: 2

Hull and Deck Information

Hull Material: Fiberglass

Deck Material: Fiberglass Sandwich

Hull Configuration: Centerboard

Hull Color: White

Hull Designer: Roger Hewsen

Engine Information

Engines: 1

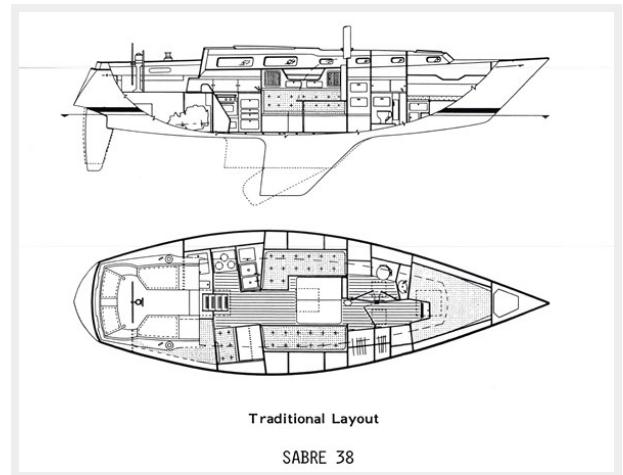
Manufacturer: Westerbeke

PHOTOS

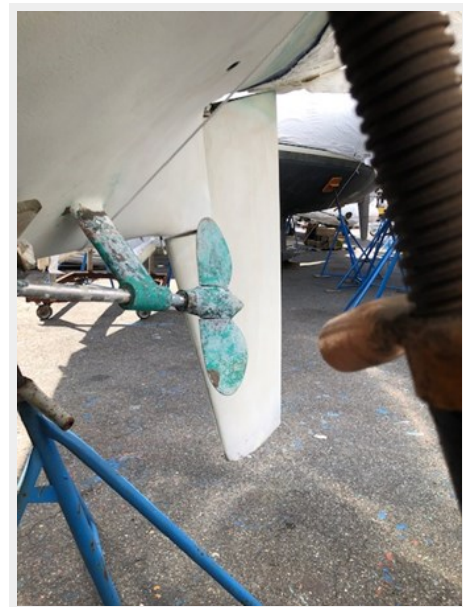
08-25-2021 New London



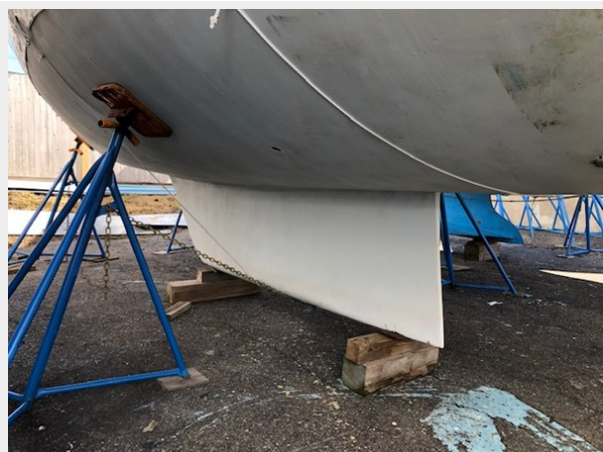
Layout



IMG_8964



IMG_8956



IMG_8953



IMG_8911



IMG_8906



IMG_8907



IMG_8943



IMG_9037



IMG_9039



IMG_9040



IMG_9038



IMG_9026



IMG_9041



IMG_9030



IMG_9031



IMG_9032



IMG_9042



IMG_9036



IMG_9034



IMG_8939



IMG_9027



IMG_9023



IMG_9024



IMG_9020



IMG_9021



CONTACTS

Andrey Shestakov, leading yacht broker of the sales department of Shestakov Yacht Sales Inc. Shestakov Yacht Sales Inc., the official representative of the Miami/Fort Lauderdale FL headquarters.

Contact details

Email: andrey@shestakovyachtsales.com

Web: shestakovyachtsales.com/en/

Telephones

USA: +1(954)274-4435

Office hours

Monday – Saturday: **9:00 - 21:00** EDT

Sunday: **closed**

Address



Harbour Towne Marina, 850 NE 3rd St,
STE 213, Dania, FL 33004