

GRACE — HARGRAVE



Builder: HARGRAVE

Year Built: 2002

Model: Semi-Displacement

Price: \$1,999,000 USD

Location: United States

LOA: 82' (24.99mm)

Beam: 20

Min Draft: 5' 3" (1.6mm)

Max Draft: 5' 3" (1.6mm)

Cruise Speed: 17.5 Knots Kts. (20 MPH)

Max Speed: 22 Knots Kts. (25 MPH)

Our experienced yacht broker, Andrey Shestakov, will help you choose and buy a yacht that best suits your needs **Grace — HARGRAVE** from our catalogue. Presently, at Shestakov Yacht Sales Inc., we have a wide variety of yachts available on our sale's list. We also work in close contact with all the big yacht manufacturers from all over the world.

If you would like to buy a yacht **Grace — HARGRAVE** or would like help answering any questions concerning purchasing, selling or chartering a yacht, please call **+1(954)274-4435**

TABLE OF CONTENTS

TABLE OF CONTENTS	2
SPECIFICATIONS	5
Overview	5
Basic Information	5
Dimensions	5
Speed, Capacities and Weight	5
Accommodations	6
Hull and Deck Information	6
Engine Information	6
PHOTOS	7
Salon	7
Salon	7
Salon	7
Salon	7
Salon	8
Salon	8
Guest Stairway	8
Salon TV	8
Galley	9
Galley	9
Lower Helm	9
Galley Dinette	9
Master Cabin	9
Master Cabin	9
Master Head	10
Guest Cabin	10
Guest Head	10
Guest Cabin	10

Guest Head	11
Crew Area	11
Crew Area (2)	11
Crew Area Stairs	12
Crew Bow Staterooms	12
Crew Bunks	12
Capt. Double Berth	12
Crew Head	13
Washer/Dryer	13
Storage	13
Cockpit	13
Aft Deck	14
Aft Deck	14
Aft Deck	14
Jacuzzi	14
Flybridge	14
Helm	14
Sink and Grill	15
Upper Helm	15
Bow	15
Sunpads	15
Swim Platform	15
Engine room	16
Engine room	16
Engine room	16
Engine room	16
Engine room	17
Engine room	17
Engine room	17

CONTACTS	18
Contact details	18
Telephones	18
Office hours	18
Address	18

SPECIFICATIONS

Overview

GRACE is an 82' 2002 Hargrave Motoryacht. This vessel was purchased in January 2017 by a knowledgeable boat owner who made improvements from bow to stern. Included are a new galley, a new hot tub on the boat deck, engine room improvements, new toilet system, etc., and in 2019, it was resold to another very knowledgeable boat owner who has since spent unlimited money upgrading the interior and mechanicals to make the yacht show like a Palm Beach Yacht Club.

When originally built, GRACE's layout was carefully considered and built so that an owner or operator could easily call her a five-stateroom layout. If there is a crew, their quarters are located in a separate area forward to the galley in two staterooms.

Basic Information

Category: Semi-Displacement

Sub Category: Semi-Displacement

Model Year: 2002

Year Built: 2002

Country: United States

Dimensions

LOA: 82' (24.99mm)

LWL: 71' (21.64mm)

Beam: 20

Min Draft: 5' 3" (1.6mm)

Max Draft: 5' 3" (1.6mm)

Speed, Capacities and Weight

Cruise Speed: 17.5 Knots Kts. (20 MPH)

Cruise Speed Range: 22

Max Speed: 22 Knots Kts. (25 MPH)

Water Capacity: 600 Gallons

Fuel Capacity: 3000 Gal Gallons

Accommodations

Total Cabins: 3

Total Heads: 3

Crew Cabin: 4

Crew Heads: 1

Hull and Deck Information

Hull Material: Fiberglass

Deck Material: Teak

Hull Configuration: Semi-Displacement

Exterior Designer: Jack Hargrave (USA)

Interior Designer: Jack Hargrave (USA)

Engine Information

Engines: 2

Manufacturer: Caterpillar

Engine Type: Inboard

Fuel Type: Diesel

PHOTOS

Salon



Salon



Salon



Salon



Salon



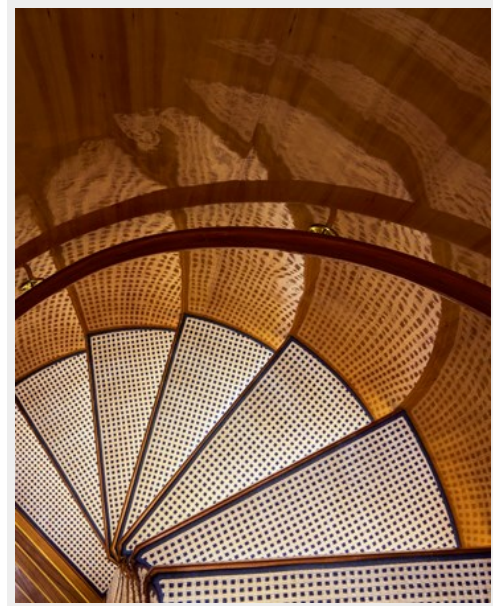
Salon



Salon TV



Guest Stairway



Galley



Galley



Lower Helm



Galley Dinette



Master Cabin



Master Cabin



Master Head



Guest Cabin



Guest Cabin



Guest Head



Guest Head



Crew Area



Crew Area (2)



Crew Area Stairs



Crew Bow Staterooms



Crew Bunks



Capt. Double Berth



Crew Head



Washer/Dryer



Storage



Cockpit



Aft Deck



Aft Deck



Aft Deck



Jacuzzi



Flybridge



Helm



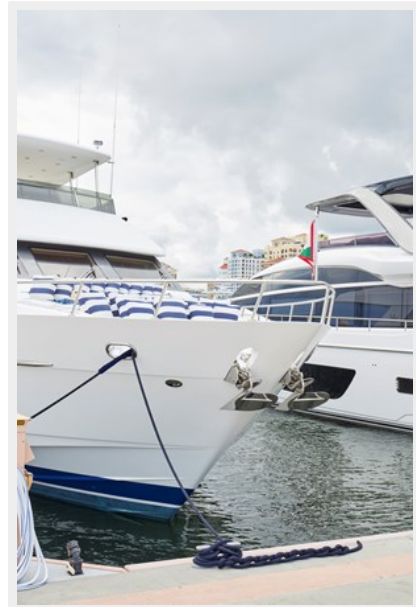
Sink and Grill



Upper Helm



Bow



Sunpads



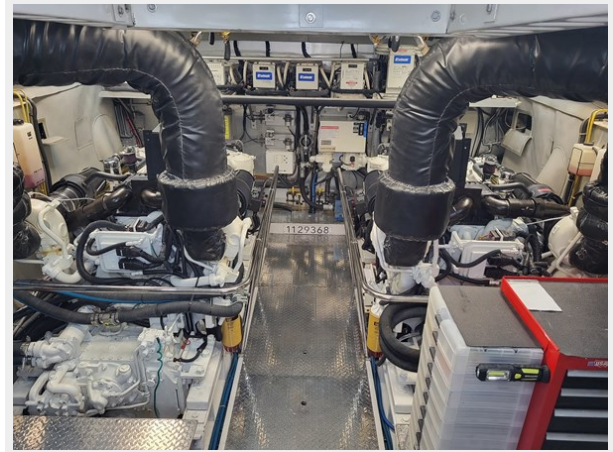
Swim Platform



Engineerom



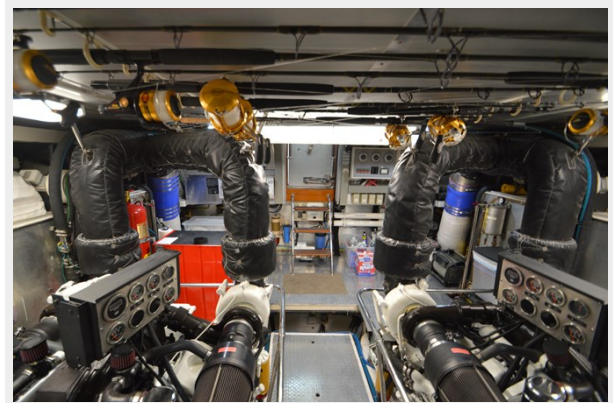
Engineerom



Engineerom



Engineerom



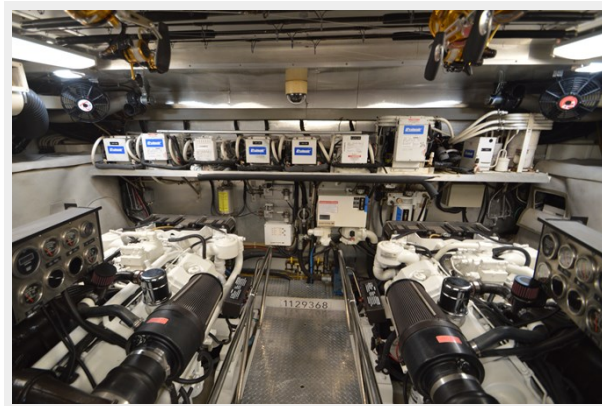
Engineerom



Engineerom



Engineerom



CONTACTS

Andrey Shestakov, leading yacht broker of the sales department of Shestakov Yacht Sales Inc. Shestakov Yacht Sales Inc., the official representative of the Miami/Fort Lauderdale FL headquarters.

Contact details

Email: andrey@shestakovyachtsales.com

Web: shestakovyachtsales.com/en/

Telephones

USA: +1(954)274-4435

Office hours

Monday – Saturday: **9:00 - 21:00** EDT

Sunday: **closed**

Address



Harbour Towne Marina, 850 NE 3rd St,
STE 213, Dania, FL 33004