

# PATIENCE — MERRITT BOAT WORKS



**Builder:** MERRITT BOAT WORKS

**Year Built:** 1972

**Model:** Sport Fisherman

**Price:** PRICE ON APPLICATION

**Location:** United States

**LOA:** 42' 8" (13mm)

**Beam:** 12.16

**Max Draft:** 3' 9" (1.14mm)

**Cruise Speed:** 21 Knots Kts. (24 MPH)

**Max Speed:** 27 Knots Kts. (31 MPH)

Our experienced yacht broker, Andrey Shestakov, will help you choose and buy a yacht that best suits your needs **PATIENCE — MERRITT BOAT WORKS** from our catalogue. Presently, at Shestakov Yacht Sales Inc., we have a wide variety of yachts available on our sale's list. We also work in close contact with all the big yacht manufacturers from all over the world.

If you would like to buy a yacht **PATIENCE — MERRITT BOAT WORKS** or would like help answering any questions concerning purchasing, selling or chartering a yacht, please call **+1(954)274-4435**

---

# TABLE OF CONTENTS

---

TABLE OF CONTENTS	2
SPECIFICATIONS	3
Overview	3
Basic Information	3
Dimensions	3
Speed, Capacities and Weight	3
Accommodations	3
Hull and Deck Information	4
Engine Information	4
PHOTOS	5
image00018	5
CONTACTS	9
Contact details	9
Telephones	9
Office hours	9
Address	9

---

# SPECIFICATIONS

---

## Overview

---

“Patients” is Merritt hull #19 built in 1972 as “Caliban III” for Roy Merritt Sr. It then became the Cosa and Lisa. She is a plank on frame construction with Mahogany Interior and exterior trim brightwork. She has recently gone through a series of upgrades including main wiring, electronics, interior upgrades, exterior cushions, new electronics, compete varnish strip and redo, paint work, fresh bottom job and more.

One of only eleven of these iconic and timeless sportfishing thoroughbreds “Patients” is available for immediate sale and can be seen at our yard by appointment.

## Basic Information

---

**Category:** Sport Fisherman

**Model Year:** 1972

**Year Built:** 1972

**Country:** United States

## Dimensions

---

**LOA:** 42' 8" (13mm)

**Beam:** 12.16

**Max Draft:** 3' 9" (1.14mm)

## Speed, Capacities and Weight

---

**Cruise Speed:** 21 Knots Kts. (24 MPH)

**Max Speed:** 27 Knots Kts. (31 MPH)

**Gross Tonnage:** 35000 Pounds

**Water Capacity:** 100 Gallons

**Fuel Capacity:** 420 Gal Gallons

## Accommodations

---

**Total Cabins:** 2

---

## Hull and Deck Information

---

**Hull Material:** Wood

---

## Engine Information

---

**Engines:** 2

**Manufacturer:** Detroit Diesel

**Engine Type:** Inboard

**Fuel Type:** Diesel

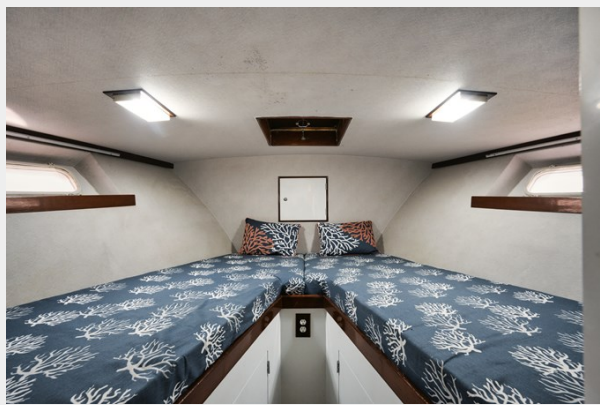
# PHOTOS



image00018











---

# CONTACTS

---

Andrey Shestakov, leading yacht broker of the sales department of Shestakov Yacht Sales Inc. Shestakov Yacht Sales Inc., the official representative of the Miami/Fort Lauderdale FL headquarters.

---

## Contact details

---

Email: [andrey@shestakovyachtsales.com](mailto:andrey@shestakovyachtsales.com)

Web: [shestakovyachtsales.com/en/](http://shestakovyachtsales.com/en/)

---

## Telephones

---

USA: +1(954)274-4435

---

## Office hours

---

Monday – Saturday: **9:00 - 21:00** EDT

Sunday: **closed**

---

## Address

---



Harbour Towne Marina, 850 NE 3rd St,  
STE 213, Dania, FL 33004