

## EVOLUTION — RIVIERA



**Builder:** RIVIERA

**Year Built:** 2015

**Model:** Enclosed Bridge

**Price:** PRICE ON APPLICATION

**Location:** United States

**LOA:** 56' 8" (17.27m)

**Beam:** 16.41

**Max Draft:** 3' 10" (1.17m)

Our experienced yacht broker, Andrey Shestakov, will help you choose and buy a yacht that best suits your needs **Evolution — RIVIERA** from our catalogue. Presently, at Shestakov Yacht Sales Inc., we have a wide variety of yachts available on our sale's list. We also work in close contact with all the big yacht manufacturers from all over the world.

If you would like to buy a yacht **Evolution — RIVIERA** or would like help answering any questions concerning purchasing, selling or chartering a yacht, please call **+1(954)274-4435**

# TABLE OF CONTENTS

TABLE OF CONTENTS	2
SPECIFICATIONS	6
Overview	6
Basic Information	6
Dimensions	6
Speed, Capacities and Weight	6
Accommodations	7
Hull and Deck Information	7
Engine Information	7
PHOTOS	8
8153296_20211208025307995_1_XLARGE	8
8153296_20211208025324431_1_XLARGE	8
8153296_20211208025332021_1_XLARGE	8
8153296_20211208025341472_1_XLARGE	8
8153296_20211208025345064_1_XLARGE	8
8153296_20211208025349401_1_XLARGE	8
8153296_20211208025353182_1_XLARGE	9
8153296_20211208025357160_1_XLARGE	9
8153296_20211208025401398_1_XLARGE	9
8153296_20211208025405274_1_XLARGE	9
8153296_20211208025408137_1_XLARGE	9
8153296_20211208025411174_1_XLARGE	9
8153296_20211208025414159_1_XLARGE	10
8153296_20211208025417420_1_XLARGE	10
8153296_20211208025420454_1_XLARGE	10
8153296_20211208025424234_1_XLARGE	10
8153296_20211208025428453_1_XLARGE	10
8153296_20211208025431423_1_XLARGE	10

---

8153296_20211208025434191_1_XLARGE	11
8153296_20211208025437421_1_XLARGE	11
8153296_20211208025440336_1_XLARGE	11
8153296_20211208025443330_1_XLARGE	11
8153296_20211208025450234_1_XLARGE	12
8153296_20211208025446659_1_XLARGE	12
8153296_20211208025453486_1_XLARGE	12
8153296_20211208025456529_1_XLARGE	12
8153296_20211208025459727_1_XLARGE	12
8153296_20211208025504389_1_XLARGE	12
8153296_20211208025511514_1_XLARGE	13
8153296_20211208025507942_1_XLARGE	13
8153296_20211208025514778_1_XLARGE	13
8153296_20211208025517827_1_XLARGE	13
8153296_20211208025529763_1_XLARGE	14
8153296_20211208025536778_1_XLARGE	14
8153296_20211208025540307_1_XLARGE	14
8153296_20211208025544389_1_XLARGE	14
8153296_20211208025548700_1_XLARGE	14
8153296_20211208025552781_1_XLARGE	14
8153296_20211208025556987_1_XLARGE	15
8153296_20211208025606638_1_XLARGE	15
8153296_20211208025615901_1_XLARGE	15
8153296_20211208025611169_1_XLARGE	15
8153296_20211208025622551_1_XLARGE	16
8153296_20211208025626887_1_XLARGE	16
8153296_20211208025635358_1_XLARGE	16
8153296_20211208025630980_1_XLARGE	16
8153296_20211208025639461_1_XLARGE	16

---

---

8153296_20211208025643564_1_XLARGE	16
8153296_20211208025657672_1_XLARGE	17
8153296_20211208025653667_1_XLARGE	17
8153296_20211208025701761_1_XLARGE	17
8153296_20211208025713693_1_XLARGE	17
8153296_20211208025721716_1_XLARGE	18
8153296_20211208025717964_1_XLARGE	18
8153296_20211208025729525_1_XLARGE	18
8153296_20211208025733647_1_XLARGE	18
8153296_20211208025737577_1_XLARGE	19
8153296_20211208025741760_1_XLARGE	19
8153296_20211208025750540_1_XLARGE	19
8153296_20211208025747073_1_XLARGE	19
8153296_20211208025753695_1_XLARGE	20
8153296_20211208025756579_1_XLARGE	20
8153296_20211208025759580_1_XLARGE	20
8153296_20211208025803701_1_XLARGE	20
8153296_20211208025806787_1_XLARGE	21
8153296_20211208025810905_1_XLARGE	21
8153296_20211208025818828_1_XLARGE	21
8153296_20211208025814638_1_XLARGE	21
8153296_20211208025822904_1_XLARGE	21
8153296_20211208025826918_1_XLARGE	21
8153296_20211208025830570_1_XLARGE	22
8153296_20211208025833540_1_XLARGE	22
8153296_20211208025837120_1_XLARGE	22
8153296_20211208025844393_1_XLARGE	22
8153296_20211208025848920_1_XLARGE	23
8153296_20211208025853760_1_XLARGE	23

---

---

8153296_20211208025857846_1_XLARGE	23
8153296_20211208025902558_1_XLARGE	23
8153296_20211208025908665_1_XLARGE	23
8153296_20211208025924566_1_XLARGE	23
8153296_20211208025932771_1_XLARGE	24
8153296_20211208025941764_1_XLARGE	24
CONTACTS	25
Contact details	25
Telephones	25
Office hours	25
Address	25

---

# SPECIFICATIONS

---

## Overview

---

"Evolution" was built to be the perfect family boat that complements both cruising and major fishing trips. Designed primarily as a cruising yacht that maximizes the use of interior space, her Volvo IPS950 pod drives enabled the engine room to be moved aft to increase the longitudinal accommodations space by 5'6" (1.7m). This allowed there to be three large staterooms and two heads. All things considered, the aft cabins still have great headroom (you can walk standing up inside them). Her enclosed fly bridge is air-conditioned and gets the helm out of the salon, protects the captain in inclement weather, and creates a great entertainment area. With sliding windows, a retractable sunroof, and removable enclosure aft, this area can also feel like an open flybridge when you want to enjoy good weather and feel the outside air. The secondary mission of this 50 Enclosed Flybridge sportfish is to maximize offshore fishability. Her features include mezzanine seating, transom console, 16'5" (5m) beam, storage on port and starboard side, two transom doors, and pod drives that can easily spin the stern around on a dime. She also has an aquarium-style live well tank with LED blue lights for live bait, a fish box located on her port side with macerator pump, and twin Kenyon electric grills with a separate isolator switch for safety.

## Basic Information

---

**Category:** Enclosed Bridge

**Sub Category:** Enclosed Bridge

**Model Year:** 2015

**Year Built:** 2015

**Country:** United States

## Dimensions

---

**LOA:** 56' 8" (17.27mm)

**Beam:** 16.41

**Max Draft:** 3' 10" (1.17mm)

## Speed, Capacities and Weight

---

**Water Capacity:** 200 Gallons

**Fuel Capacity:** 793 Gal Gallons

---

## Accommodations

---

**Total Cabins:** 3

**Total Berths:** 6

**Total Heads:** 2

---

## Hull and Deck Information

---

**Hull Material:** Fiberglass

---

## Engine Information

---

**Engines:** 2

**Manufacturer:** Volvo Penta

**Engine Type:** Inboard

**Fuel Type:** Diesel

# PHOTOS

8153296\_20211208025307995\_1\_XLARGE



8153296\_20211208025324431\_1\_XLARGE



8153296\_20211208025332021\_1\_XLARGE



8153296\_20211208025341472\_1\_XLARGE



8153296\_20211208025345064\_1\_XLARGE



8153296\_20211208025349401\_1\_XLARGE





8153296\_20211208025353182\_1\_XLARGE



8153296\_20211208025357160\_1\_XLARGE



8153296\_20211208025401398\_1\_XLARGE



8153296\_20211208025405274\_1\_XLARGE



8153296\_20211208025408137\_1\_XLARGE



8153296\_20211208025411174\_1\_XLARGE





8153296\_20211208025414159\_1\_XLARGE



8153296\_20211208025417420\_1\_XLARGE



8153296\_20211208025420454\_1\_XLARGE



8153296\_20211208025424234\_1\_XLARGE



8153296\_20211208025428453\_1\_XLARGE



8153296\_20211208025431423\_1\_XLARGE



8153296\_20211208025434191\_1\_XLARGE



8153296\_20211208025437421\_1\_XLARGE



8153296\_20211208025440336\_1\_XLARGE



8153296\_20211208025443330\_1\_XLARGE





8153296\_20211208025450234\_1\_XLARGE



8153296\_20211208025446659\_1\_XLARGE



8153296\_20211208025453486\_1\_XLARGE



8153296\_20211208025456529\_1\_XLARGE



8153296\_20211208025459727\_1\_XLARGE



8153296\_20211208025504389\_1\_XLARGE



8153296\_20211208025511514\_1\_XLARGE

8153296\_20211208025507942\_1\_XLARGE



8153296\_20211208025514778\_1\_XLARGE

8153296\_20211208025517827\_1\_XLARGE





8153296\_20211208025529763\_1\_XLARGE



8153296\_20211208025536778\_1\_XLARGE



8153296\_20211208025540307\_1\_XLARGE



8153296\_20211208025544389\_1\_XLARGE



8153296\_20211208025548700\_1\_XLARGE



8153296\_20211208025552781\_1\_XLARGE



8153296\_20211208025556987\_1\_XLARGE



8153296\_20211208025606638\_1\_XLARGE



8153296\_20211208025615901\_1\_XLARGE

8153296\_20211208025611169\_1\_XLARGE





8153296\_20211208025622551\_1\_XLARGE



8153296\_20211208025626887\_1\_XLARGE



8153296\_20211208025635358\_1\_XLARGE

8153296\_20211208025630980\_1\_XLARGE



8153296\_20211208025639461\_1\_XLARGE



8153296\_20211208025643564\_1\_XLARGE





8153296\_20211208025657672\_1\_XLARGE



8153296\_20211208025653667\_1\_XLARGE



8153296\_20211208025701761\_1\_XLARGE



8153296\_20211208025713693\_1\_XLARGE



8153296\_20211208025721716\_1\_XLARGE

8153296\_20211208025717964\_1\_XLARGE



8153296\_20211208025729525\_1\_XLARGE



8153296\_20211208025733647\_1\_XLARGE



8153296\_20211208025737577\_1\_XLARGE



8153296\_20211208025741760\_1\_XLARGE



8153296\_20211208025750540\_1\_XLARGE

8153296\_20211208025747073\_1\_XLARGE





8153296\_20211208025753695\_1\_XLARGE



8153296\_20211208025756579\_1\_XLARGE



8153296\_20211208025759580\_1\_XLARGE



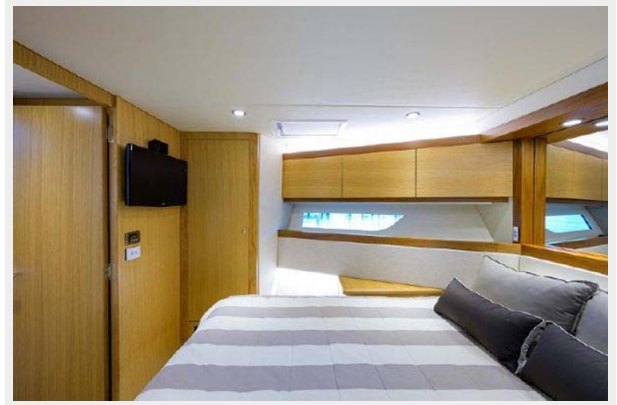
8153296\_20211208025803701\_1\_XLARGE



8153296\_20211208025806787\_1\_XLARGE



8153296\_20211208025810905\_1\_XLARGE



8153296\_20211208025818828\_1\_XLARGE

8153296\_20211208025814638\_1\_XLARGE



8153296\_20211208025822904\_1\_XLARGE



8153296\_20211208025826918\_1\_XLARGE



8153296\_20211208025830570\_1\_XLARGE



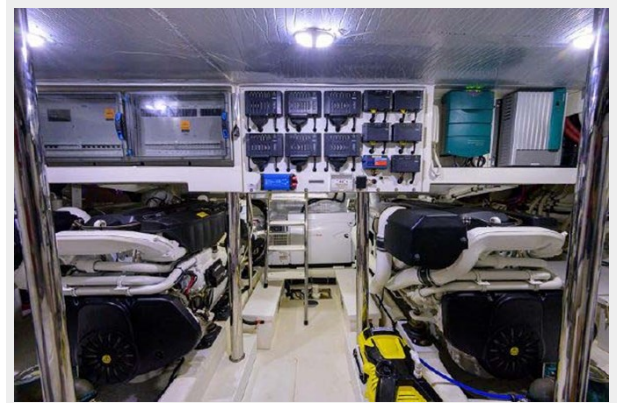
8153296\_20211208025833540\_1\_XLARGE



8153296\_20211208025837120\_1\_XLARGE



8153296\_20211208025844393\_1\_XLARGE





8153296\_20211208025848920\_1\_XLARGE



8153296\_20211208025853760\_1\_XLARGE



8153296\_20211208025857846\_1\_XLARGE



8153296\_20211208025902558\_1\_XLARGE



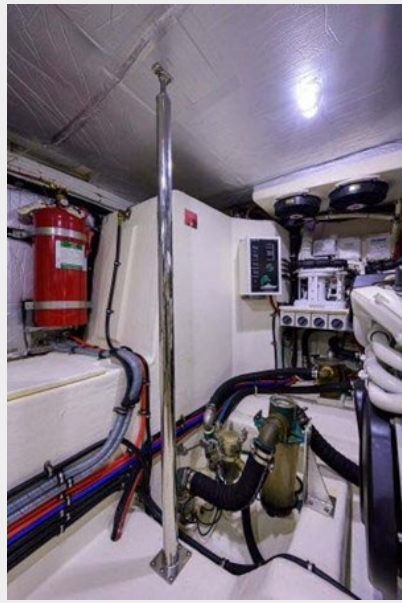
8153296\_20211208025908665\_1\_XLARGE



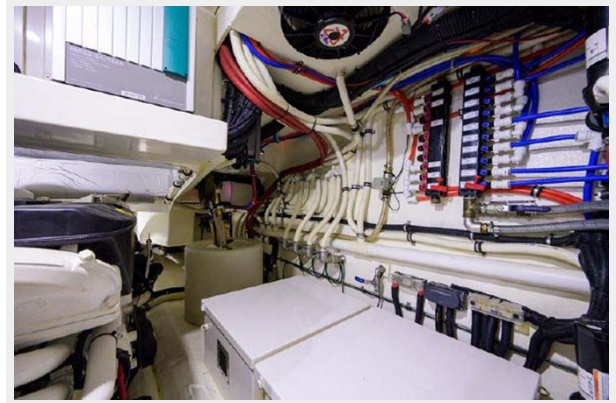
8153296\_20211208025924566\_1\_XLARGE



8153296\_20211208025932771\_1\_XLARGE



8153296\_20211208025941764\_1\_XLARGE





# CONTACTS

---

Andrey Shestakov, leading yacht broker of the sales department of Shestakov Yacht Sales Inc. Shestakov Yacht Sales Inc., the official representative of the Miami/Fort Lauderdale FL headquarters.

## Contact details

---

Email: [andrey@shestakovyachtsales.com](mailto:andrey@shestakovyachtsales.com)

Web: [shestakovyachtsales.com/en/](http://shestakovyachtsales.com/en/)

## Telephones

---

USA: +1(954)274-4435

## Office hours

---

Monday – Saturday: **9:00 - 21:00** EDT

Sunday: **closed**

## Address

---



Harbour Towne Marina, 850 NE 3rd St,  
STE 213, Dania, FL 33004