

## D'VINCI — FERRETTI CUSTOM LINE



**Builder:** FERRETTI CUSTOM LINE

**Year Built:** 2015

**Model:** Motor Yacht

**Price:** PRICE ON APPLICATION

**Location:** Italy

**LOA:** 92' (28.04mm)

**Beam:** 23

**Max Draft:** 7' 3" (2.21mm)

**Cruise Speed:** 13.5 Knots Kts. (16 MPH)

**Max Speed:** 14 Knots Kts. (16 MPH)

Our experienced yacht broker, Andrey Shestakov, will help you choose and buy a yacht that best suits your needs D'Vinci — FERRETTI CUSTOM LINE from our catalogue. Presently, at Shestakov Yacht Sales Inc., we have a wide variety of yachts available on our sale's list. We also work in close contact with all the big yacht manufacturers from all over the world.

If you would like to buy a yacht D'Vinci — FERRETTI CUSTOM LINE or would like help answering any questions concerning purchasing, selling or chartering a yacht, please call **+1(954)274-4435**

# TABLE OF CONTENTS

---

TABLE OF CONTENTS	2
SPECIFICATIONS	5
Overview	5
Basic Information	6
Dimensions	6
Speed, Capacities and Weight	6
Accommodations	6
Hull and Deck Information	6
Engine Information	6
PHOTOS	7
Custom Line Navetta 28 LADY NANU	7
Copy of FXLJ2596 NO NAME	7
Copy of RNRM4970 NO NAME	7
HRXV7085	7
IMG_1841	7
IMG_1843	7
IMG_1846	8
IMG_1847	8
IMG_1848	8
IMG_1850	8
IMG_1851	8
IMG_1859	8
IMG_1862	9
IMG_1864	9
IMG_1865	9
IMG_1868	9
IMG_1876	9
IMG_1877	9

GKJL4459	10
IMG_1881	10
IMG_1882	10
IMG_1883	10
IMG_1896	10
IMG_1897	10
IMG_1900	11
IMG_1902	11
IMG_1907	11
IMG_1909	11
IMG_1910	11
IMG_1913	11
IMG_1917	12
IMG_1922	12
IMG_1924	12
IMG_1927	12
IMG_1928	12
IMG_1930	12
IMG_1931	13
IMG_1933	13
IMG_1934	13
IMG_1936	13
IMG_1941	13
IMG_1942	13
IMG_1944	14
IMG_1945	14
IMG_1946	14
New Picture (1) - Copy NO NAME	14
New Picture (2)	14

---

New Picture (4)	14
New Picture (5)	15
New Picture (7)	15
New Picture (8)	15
New Picture (9)	15
New Picture 10	15
ONKY2383	15
Ferretti Custom Line Navetta 28 Layout	16
CONTACTS	17
Contact details	17
Telephones	17
Office hours	17
Address	17

# SPECIFICATIONS

## Overview

The FERRETTI CUSTOM LINE NAVETTA 28 is a 28.31m compact, yet spacious luxury tri-deck motor yacht, designed by Zuccon International Project with Ferretti Engineering Department developing the naval architecture. This fine example CUSTOM LINE NAVETTA 28 for sale was built in 2015 and is available for viewings. She carries the space and feel of a Superyacht which is quite amazing given she's built below the 24m load-line length and therefore not subject to full Class regulations. Her top speed is 14 knots and she boasts a maximum cruising range of 1400nm at 10 knots with power coming from twin 1200 Hp MAN diesel engines perfectly maintained and with low hours. The FERRETTI CUSTOM LINE NAVETTA 28 is recognizable from the unmistakable exterior profile and the panoramic dining area with round glass sliding doors which allow for great flexibility in the use of the upper deck. The sundeck comprises a large sunbathing area and awning. On the main deck, a continuous window goes from stern to bow, while below deck there are four innovative hull windows at the level of the guest cabins, installed for the first time on the market, with "invisible" portholes glued onto the glass itself. The real cutting-edge innovation is in the stern area. The Dual Mode Transom (DMT), a Ferretti Group patent, combines in a single system a floodable garage, a diving platform and a spacious Beach Club, the largest ever on yacht models of this size. When guests walk into the salon, they are welcomed by a large, carefully structured open space. To Starboard you have the galley, towards the bow, you reach the area reserved to the ship owner's master stateroom with a large bathroom and walk-in wardrobe. She can comfortably accommodate up to 11 guests in 5 luxury en-suite cabins with 5 crew members in 3 additional cabins with separate access. Below decks you will find 4 guest cabins, 3 of which are fitted with double beds and a twin cabin with Pullman bed, all of them with en-suite facilities. Comprehensively equipped with a state-of-the-art A/V entertainment system, this FERRETTI CUSTOM LINE NAVETTA 28 for sale, also carries zero-speed (underway + at anchor) stabilizers for maximum comfort.

### Key Features:

- 5 Guest cabins with main deck master suite
- Twin MAN V8-1200 Hp Diesel engines with low engine hours
- Stabilizing fins TRAC zero speed
- 2 x Seakeeper gyro stabilizers
- Tropical air conditioning
- 2 x Kohler generators
- Upgraded entertainment and A/V system with CCTV
- Premium underwater lighting package
- Wine cellar
- Watermaker
- Black water treatment system
- Williams 445 Jet Tender

- Wind docking station on second deck port and starboard side plus cockpit station control

## Basic Information

---

**Category:** Motor Yacht

**Sub Category:** Flybridge

**Model Year:** 2015

**Year Built:** 2015

**Country:** Italy

## Dimensions

---

**LOA:** 92' (28.04mm)

**LWL:** 78' 1" (23.8mm)

**Beam:** 23

**Max Draft:** 7' 3" (2.21mm)

## Speed, Capacities and Weight

---

**Cruise Speed:** 13.5 Knots Kts. (16 MPH)

**Max Speed:** 14 Knots Kts. (16 MPH)

**Water Capacity:** 2000 Gallons

**Fuel Capacity:** 12400 Gal Gallons

## Accommodations

---

**Total Cabins:** 5

**Total Heads:** 6

## Hull and Deck Information

---

**Hull Material:** Fiberglass

## Engine Information

---

**Engines:** 2

**Manufacturer:** MAN

**Engine Type:** Inboard

**Fuel Type:** Diesel

# PHOTOS

**Custom Line Navetta 28 LADY NANU**



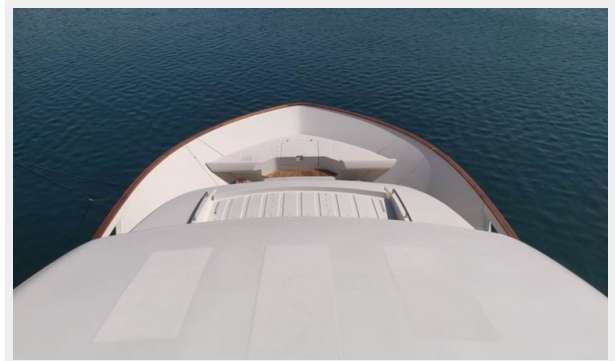
**Copy of FXLJ2596 NO NAME**



**Copy of RNRM4970 NO NAME**



**HRXV7085**



**IMG\_1841**



**IMG\_1843**





IMG\_1846



IMG\_1847



IMG\_1848



IMG\_1850



IMG\_1851



IMG\_1859





IMG\_1862



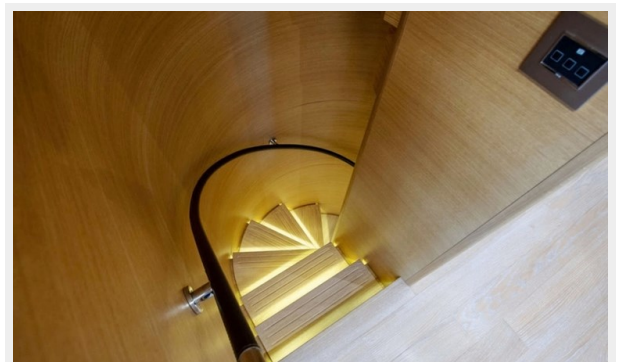
IMG\_1864



IMG\_1865



IMG\_1868



IMG\_1876



IMG\_1877



GKJL4459



IMG\_1881



IMG\_1882



IMG\_1883



IMG\_1896



IMG\_1897





IMG\_1900



IMG\_1902



IMG\_1907



IMG\_1909



IMG\_1910



IMG\_1913



IMG\_1917



IMG\_1922



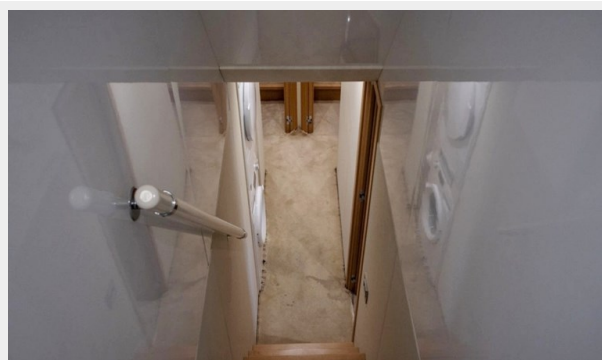
IMG\_1924



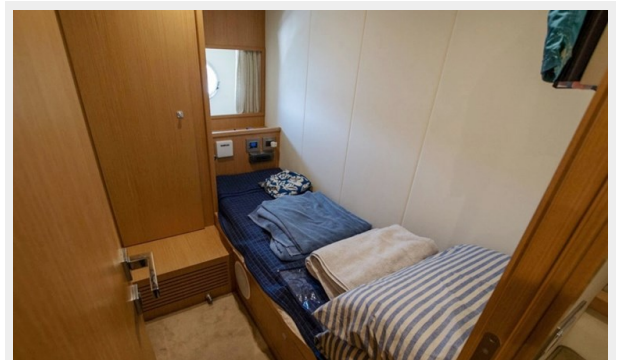
IMG\_1927



IMG\_1928



IMG\_1930





IMG\_1931



IMG\_1933



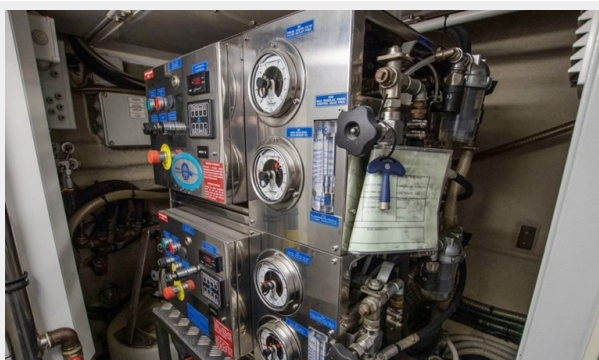
IMG\_1934



IMG\_1936



IMG\_1941



IMG\_1942



IMG\_1944



IMG\_1945



IMG\_1946



New Picture (1) - Copy NO NAME



New Picture (2)



New Picture (4)





New Picture (5)



New Picture (7)



New Picture (8)



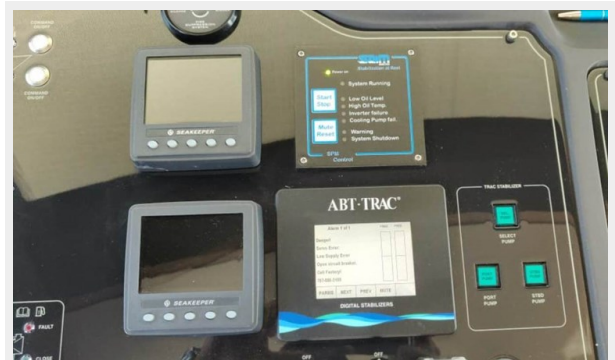
New Picture (9)



New Picture 10



ONKY2383



## Ferretti Custom Line Navetta 28 Layout



# CONTACTS

---

Andrey Shestakov, leading yacht broker of the sales department of Shestakov Yacht Sales Inc. Shestakov Yacht Sales Inc., the official representative of the Miami/Fort Lauderdale FL headquarters.

## Contact details

---

Email: [andrey@shestakovyachtsales.com](mailto:andrey@shestakovyachtsales.com)

Web: [shestakovyachtsales.com/en/](http://shestakovyachtsales.com/en/)

## Telephones

---

USA: +1(954)274-4435

## Office hours

---

Monday – Saturday: **9:00 - 21:00** EDT

Sunday: **closed**

## Address

---



Harbour Towne Marina, 850 NE 3rd St,  
STE 213, Dania, FL 33004