

ARIELA — AMELS



Builder: [AMELS](#)

Year Built: 2011

Model: Motor Yacht

Price: PRICE ON APPLICATION

Location: Italy

LOA: 178' 2" (54.3mm)

Beam: 29.52

Max Draft: 11' (3.35mm)

Cruise Speed: 13 Knots Kts. (15 MPH)

Max Speed: 15.5 Knots Kts. (18 MPH)

Our experienced yacht broker, Andrey Shestakov, will help you choose and buy a yacht that best suits your needs **ARIELA — AMELS** from our catalogue. Presently, at Shestakov Yacht Sales Inc., we have a wide variety of yachts available on our sale's list. We also work in close contact with all the big yacht manufacturers from all over the world.

If you would like to buy a yacht **ARIELA — AMELS** or would like help answering any questions concerning purchasing, selling or chartering a yacht, please call **+1(954)274-4435**

TABLE OF CONTENTS

TABLE OF CONTENTS	2
SPECIFICATIONS	4
Overview	4
Basic Information	4
Dimensions	5
Speed, Capacities and Weight	5
Accommodations	5
Hull and Deck Information	5
Engine Information	5
PHOTOS	6
Exterior - 1	6
Exterior - 2	6
Exterior - 3	6
Exterior - 4	6
Exterior - 5	6
Exterior - 6	6
Exterior - 7	7
Exterior - 8	7
Exterior - 9	7
Exterior - 10	7
Main-Deck Aft - Seating	7
Main-Deck - Lounge	7
Main-Deck - Lounge 3	7
Main-Deck - Lounge 2	7
Main-Deck - Double / Study	8
Owners -Stateroom	8
Owners Stateroom - 2	8
Owners - Bathroom	8

Owners - Bathroom (Shower)	8
Lower-Deck - Guest Cabin (Double)	8
Lower-Deck - Guest Cabin (Double-2)	8
Lower-Deck - Guest-Cabin (Double-3)	8
Lower-Deck - Guest-Cabin (Bathroom)	9
Lower-Deck - Guest Cabin (Twin)	9
Lower-Deck - Guest Lobby	9
Bridge-Deck Aft -Dining	9
Bridge-Deck Lounge -Piano / Card Table	9
Bridge-Deck -Lounge	9
Bridge-Deck- Lounge-2	9
Bridge	9
Bridge-Deck - Fwd	10
Sun-Deck - Bar 2	10
Sun-Deck - Jacuzzi	10
Sun-Deck - Bar	10
Sun-Deck - Lounger	10
Exterior - 11	10
CONTACTS	11
Contact details	11
Telephones	11
Office hours	11
Address	11

SPECIFICATIONS

Overview

ARIELA sports interiors penned by Laura Sessa, and an exterior by renowned designer Tim Heywood. Privately owned and never chartered despite the Amels 177 model from the shipyard's Limited Editions range proving popular on the charter market, ARIELA is now listed for sale for the first time since her 2011 delivery.

Accommodating 12 guests in six cabins, including a full-beam master suite forward on the main deck, with private lounge and dressing room. There is space for a further 14 crew. ARIELA is a stylish steel hulled, aluminum superstructure yacht with a versatile interior layout and high cabin volume. Large windows allow a large amount of natural light to fill the interior, framing the view beyond.

Large exterior teak deck spaces include a waterside beach club for easy access and enjoyment of watersports and an expansive sun deck with a whirlpool Jacuzzi and a partial hard top for relaxing at leisure. The list of tenders & toys includes two Nautica RIBs, a WETA Trimaran, kayaks, water skis, wakeboards, scuba diving equipment and a Yachtbeach luxury pool.

Zero speed stabilizers keep her comfortable at sea in all weather, with reduced noise and vibration making her a silent yacht too. ARIELA has recently completed her Lloyds 10 year survey, enjoys low running hours, is competitively priced and has a large nautical mile range, making her an ideal yacht for an owner looking to step into discreet private vessel or onto the charter market.

Basic Information

Category: Motor Yacht

Model Year: 2011

Year Built: 2011

Country: Italy

Dimensions

LOA: 178' 2" (54.3mm)

Beam: 29.52

Max Draft: 11' (3.35mm)

Speed, Capacities and Weight

Cruise Speed: 13 Knots Kts. (15 MPH)

Cruise Speed Range: 4500

Max Speed: 15.5 Knots Kts. (18 MPH)

Gross Tonnage: 656 Pounds

Water Capacity: 17000 Gallons

Fuel Capacity: 30379.79 Gal Gallons

Accommodations

Total Cabins: 6

Sleeps: 12

Crew Cabin: 14

Crew Berths: 7

Hull and Deck Information

Hull Material: Steel

Deck Material: Teak

Hull Configuration: Full Displacement

Exterior Designer: Tim Heywood Design

Interior Designer: Laura Sessa

Engine Information

Engines: 2

Manufacturer: MTU

PHOTOS

Exterior - 1



Exterior - 2



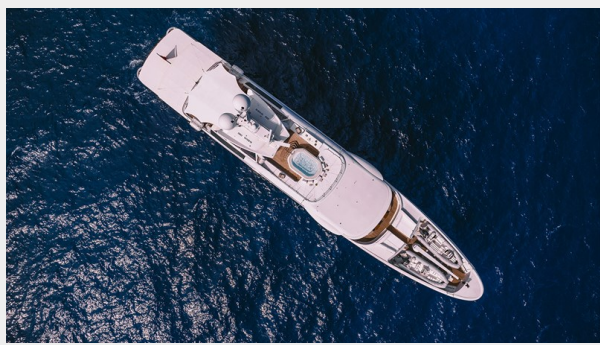
Exterior - 3



Exterior - 4



Exterior - 5



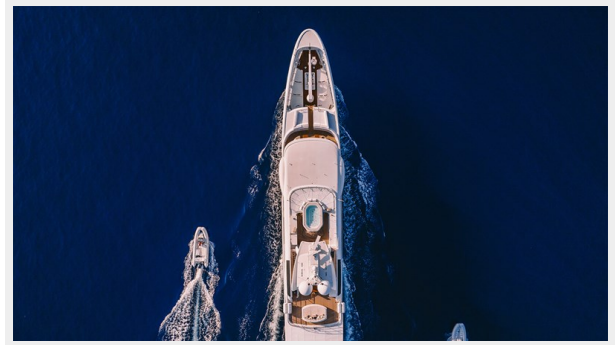
Exterior - 6



Exterior - 7



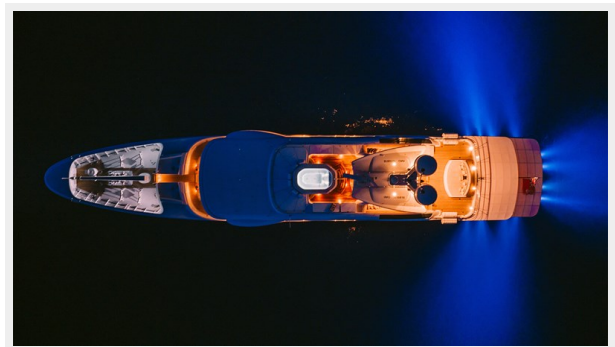
Exterior - 8



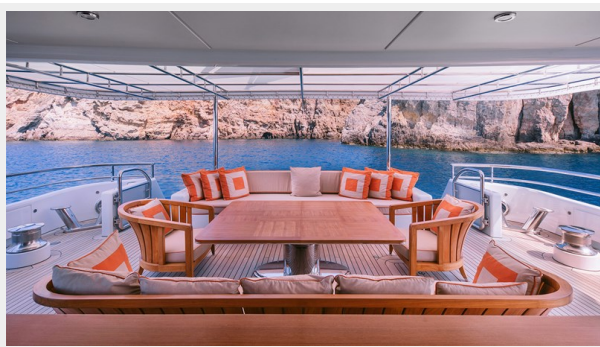
Exterior - 9



Exterior - 10



Main-Deck Aft - Seating



Main-Deck - Lounge



Main-Deck - Lounge 3



Main-Deck - Lounge 2



Main-Deck - Double / Study



Owners -Stateroom



Owners Stateroom - 2



Owners - Bathroom



Owners - Bathroom (Shower)



Lower-Deck - Guest Cabin (Double)



Lower-Deck - Guest Cabin (Double-2)



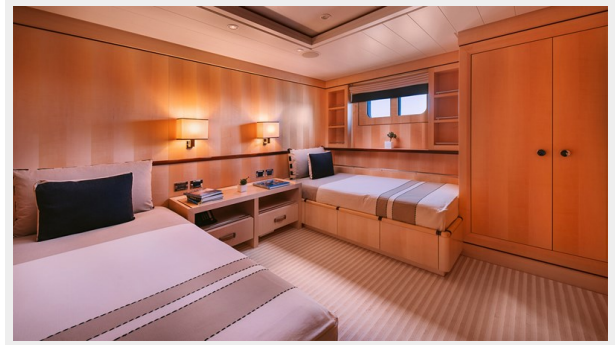
Lower-Deck - Guest-Cabin (Double-3)



Lower-Deck - Guest-Cabin (Bathroom)



Lower-Deck - Guest Cabin (Twin)



Lower-Deck - Guest Lobby



Bridge-Deck Aft -Dining



Bridge-Deck Lounge -Piano / Card Table



Bridge-Deck -Lounge



Bridge-Deck- Lounge-2



Bridge



Bridge-Deck - Fwd



Sun-Deck - Bar 2



Sun-Deck - Jacuzzi



Sun-Deck - Bar



Sun-Deck - Lounger



Exterior - 11



CONTACTS

Andrey Shestakov, leading yacht broker of the sales department of Shestakov Yacht Sales Inc. Shestakov Yacht Sales Inc., the official representative of the Miami/Fort Lauderdale FL headquarters.

Contact details

Email: andrey@shestakovyachtsales.com

Web: shestakovyachtsales.com/en/

Telephones

USA: +1(954)274-4435

Office hours

Monday – Saturday: **9:00 - 21:00** EDT

Sunday: **closed**

Address



Harbour Towne Marina, 850 NE 3rd St,
STE 213, Dania, FL 33004