

NO NAME — RYBOVICH



Builder: RYBOVICH

Year Built: 1993

Model: Sport Fisherman

Price: PRICE ON APPLICATION

LOA: 55' (16.76mm)

Beam: 16

Min Draft: 4' 6" (1.37mm)

Max Draft: 5' (1.52mm)

Our experienced yacht broker, Andrey Shestakov, will help you choose and buy a yacht that best suits your needs **NO NAME — RYBOVICH** from our catalogue. Presently, at Shestakov Yacht Sales Inc., we have a wide variety of yachts available on our sale's list. We also work in close contact with all the big yacht manufacturers from all over the world.

If you would like to buy a yacht **NO NAME — RYBOVICH** or would like help answering any questions concerning purchasing, selling or chartering a yacht, please call **+1(954)274-4435**

TABLE OF CONTENTS

TABLE OF CONTENTS	2
SPECIFICATIONS	3
Overview	3
Basic Information	3
Dimensions	3
Speed, Capacities and Weight	3
Accommodations	3
Hull and Deck Information	4
Engine Information	4
PHOTOS	5
CONTACTS	13
Contact details	13
Telephones	13
Office hours	13
Address	13

SPECIFICATIONS

Overview

This Stunning 54 Rybovich Convertible is a must to consider. A thorough Refit and beautiful wood work makes this classic cold-molded Rybovich stand out.

Master stateroom forward with center line queen and private head. Aft to port is guest stateroom with twin stacked berths and private head. Up and aft to salon with galley forward to port. The Galley is island style with refrigerator and freezer to starboard; large sink; combination micro/convection oven; two burner cooktop; and ice maker. Aft to port is an L-shaped settee with rod and tackle storage underneath. To starboard are two (2) occasional chairs with an entertainment center separating them.

Basic Information

Category: Sport Fisherman

Model Year: 1993

Year Built: 1993

Dimensions

LOA: 55' (16.76mm)

Beam: 16

Min Draft: 4' 6" (1.37mm)

Max Draft: 5' (1.52mm)

Speed, Capacities and Weight

Water Capacity: 120 Gallons

Fuel Capacity: 900 Gal Gallons

Accommodations

Total Cabins: 3

Total Berths: 3

Total Heads: 3

Hull and Deck Information

Hull Material: Fiberglass

Engine Information

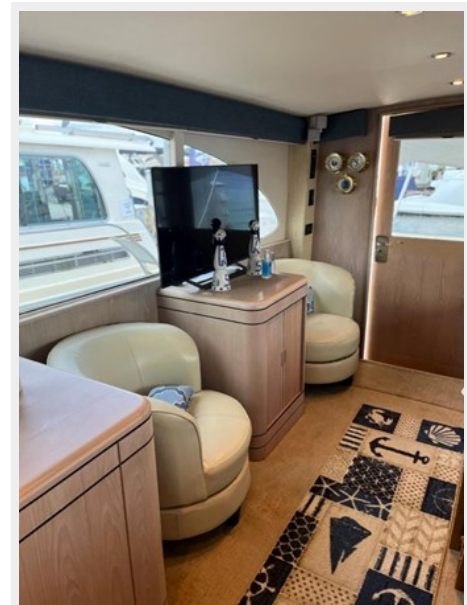
Engines: 2

Manufacturer: Detroit Diesel

Engine Type: Inboard

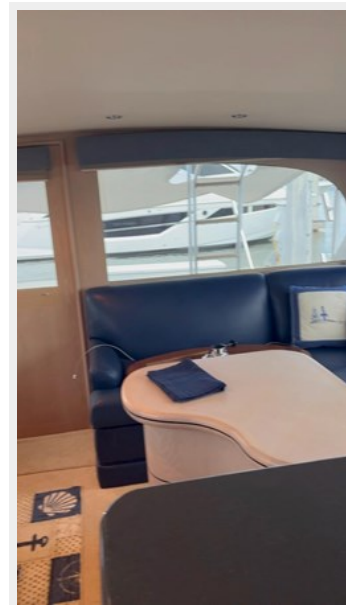
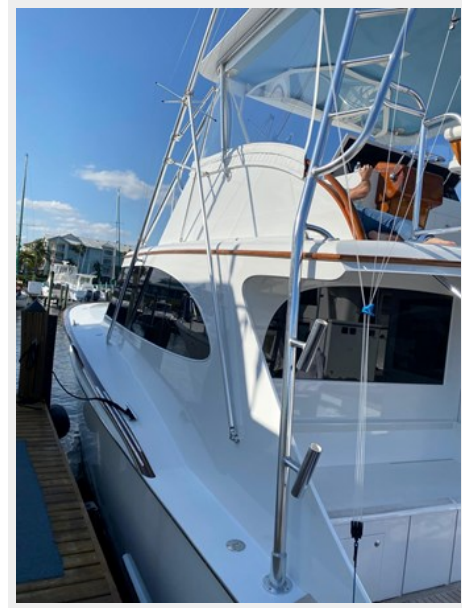
Fuel Type: Diesel

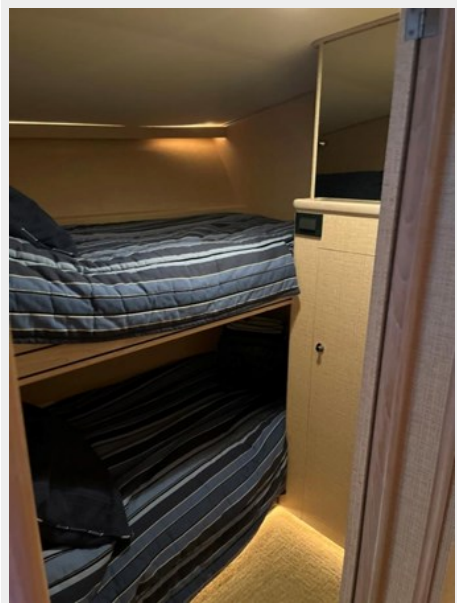
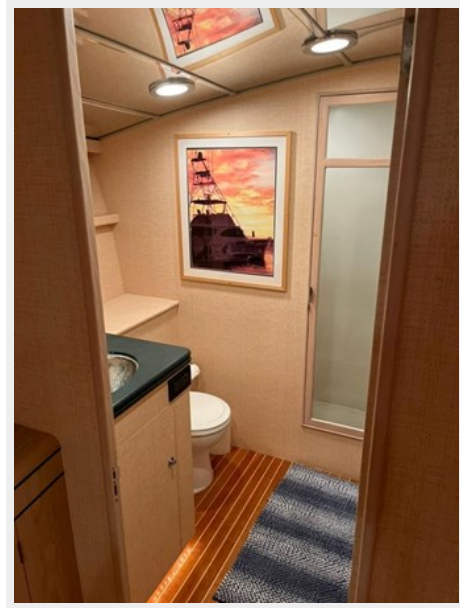
PHOTOS

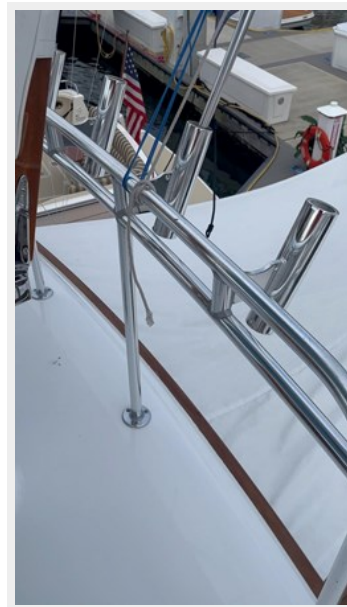


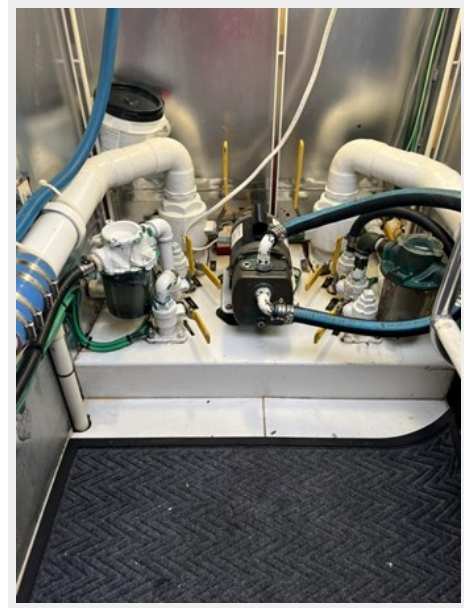


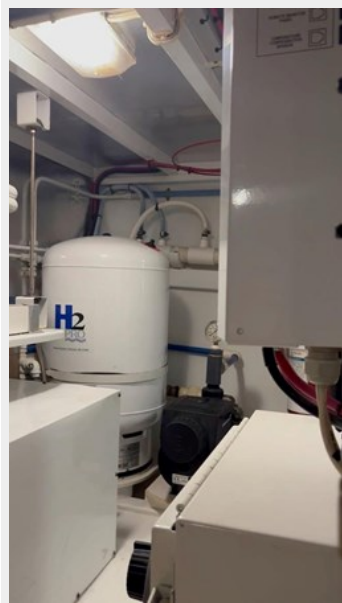












CONTACTS

Andrey Shestakov, leading yacht broker of the sales department of Shestakov Yacht Sales Inc. Shestakov Yacht Sales Inc., the official representative of the Miami/Fort Lauderdale FL headquarters.

Contact details

Email: andrey@shestakovyachtsales.com

Web: shestakovyachtsales.com/en/

Telephones

USA: +1(954)274-4435

Office hours

Monday – Saturday: **9:00 - 21:00** EDT

Sunday: **closed**

Address



Harbour Towne Marina, 850 NE 3rd St,
STE 213, Dania, FL 33004