

WARDEN PASS — VIKING



Builder: VIKING

Year Built: 2010

Model: Sport Fisherman

Price: \$1,899,000 USD

Location: United States

LOA: 57' (17.37mm)

Beam: 18.16

Min Draft: 4' 11" (1.5mm)

Max Draft: 5' (1.52mm)

Cruise Speed: 32 Knots Kts. (37 MPH)

Max Speed: 40 Knots Kts. (46 MPH)

Our experienced yacht broker, Andrey Shestakov, will help you choose and buy a yacht that best suits your needs **Warden Pass — VIKING** from our catalogue. Presently, at Shestakov Yacht Sales Inc., we have a wide variety of yachts available on our sale's list. We also work in close contact with all the big yacht manufacturers from all over the world.

If you would like to buy a yacht **Warden Pass — VIKING** or would like help answering any questions concerning purchasing, selling or chartering a yacht, please call **+1(954)274-4435**

TABLE OF CONTENTS

TABLE OF CONTENTS	2
SPECIFICATIONS	3
Overview	3
Basic Information	3
Dimensions	3
Speed, Capacities and Weight	4
Accommodations	4
Hull and Deck Information	4
Engine Information	4
PHOTOS	5
CONTACTS	14
Contact details	14
Telephones	14
Office hours	14
Address	14

SPECIFICATIONS

Overview

2010 Viking 57 Convertible Sportfish

Viking's classic sleek convertible styling with soft S-curve sheerline, aggressively raked bow for slicing through head seas, and low-slung superstructure, is totally American—all eye-pleasing curves—inside and out! Flybridge and cockpit are arranged and outfitted for serious big game and tournament fishing. Cockpit observation mezzanine (pioneered by Viking) features cushioned seating shaded by flybridge overhang and plenty of built-in stowage and amenities, keeping equipment out of the way, but within easy reach.

Viking is famed for its engineering, evident in the 57 Convertible's performance, handling, and well-designed engine room that featured Viking's Centralized Seawater System, eliminating any number of raw water pumps for various applications, including A/C, refrigerators, and livewells.

Viking's designer interiors are exceptional for the beautiful satin-finished teak joinery, trim, and furnishings. High-end materials, appliances, and entertainment electronics create elegant, comfortable living areas for relaxing underway or at anchor.

"Warden Pass" has all the bells and whistles for your comfort and fishing needs. Twin 1550 hp MAN engines push her at a fast and efficient pace and two Seakeeper gyro stabilizers keep her steady. Helm features upgraded Furuno electronics for navigation and fishing. This exceptional turnkey 2010 Viking 57 Convertible has just come on the market—call NOW to see her!

Basic Information

Category: Sport Fisherman

Model Year: 2010

Year Built: 2010

Country: United States

Dimensions

LOA: 57' (17.37mm)

Beam: 18.16

Min Draft: 4' 11" (1.5mm)

Max Draft: 5' (1.52mm)

Speed, Capacities and Weight

Cruise Speed: 32 Knots Kts. (37 MPH)

Max Speed: 40 Knots Kts. (46 MPH)

Water Capacity: 240 Gallons

Holding Tank: 125 Gal Gallons

Fuel Capacity: 1685 Gal Gallons

Accommodations

Total Cabins: 3

Total Heads: 2

Hull and Deck Information

Hull Material: Fiberglass

Engine Information

Engines: 2

Manufacturer: MAN

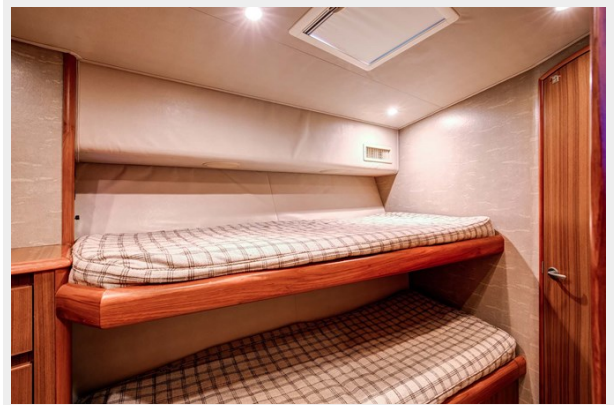
Engine Type: Inboard

Fuel Type: Diesel

PHOTOS

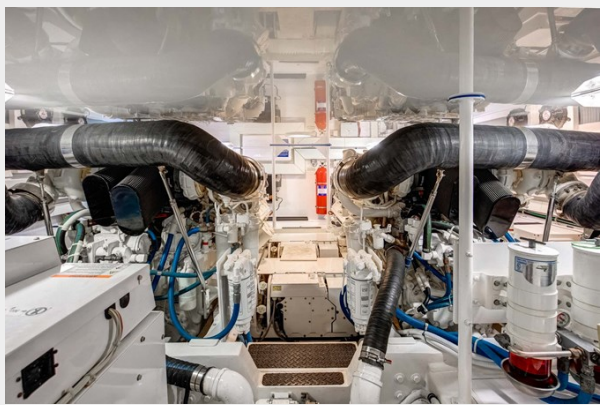


















CONTACTS

Andrey Shestakov, leading yacht broker of the sales department of Shestakov Yacht Sales Inc. Shestakov Yacht Sales Inc., the official representative of the Miami/Fort Lauderdale FL headquarters.

Contact details

Email: andrey@shestakovyachtsales.com

Web: shestakovyachtsales.com/en/

Telephones

USA: +1(954)274-4435

Office hours

Monday – Saturday: **9:00 - 21:00** EDT

Sunday: **closed**

Address



Harbour Towne Marina, 850 NE 3rd St,
STE 213, Dania, FL 33004