

DREAM CATCHER — SEA RAY



Builder: SEA RAY

Year Built: 1999

Model: Motor Yacht

Price: PRICE ON APPLICATION

Location: United States

LOA: 45' 5" (13.84mm)

Beam: 14.25

Max Draft: 3' 1" (0.94mm)

Cruise Speed: 15 Knots Kts. (17 MPH)

Max Speed: 20 Knots Kts. (23 MPH)

Our experienced yacht broker, Andrey Shestakov, will help you choose and buy a yacht that best suits your needs **Dream Catcher — SEA RAY** from our catalogue. Presently, at Shestakov Yacht Sales Inc., we have a wide variety of yachts available on our sale's list. We also work in close contact with all the big yacht manufacturers from all over the world.

If you would like to buy a yacht **Dream Catcher — SEA RAY** or would like help answering any questions concerning purchasing, selling or chartering a yacht, please call **+1(954)274-4435**

TABLE OF CONTENTS

TABLE OF CONTENTS	2
SPECIFICATIONS	5
Overview	5
Basic Information	5
Dimensions	5
Speed, Capacities and Weight	5
Accommodations	5
Hull and Deck Information	6
Engine Information	6
PHOTOS	7
2	7
3	7
4	7
5	7
6	7
7	7
8	8
9	8
10	8
11	8
12	8
13	8
14	9
15	9
16	9
17	9
18	9
19	9

20	10
21	10
22	10
23	10
24	10
25	10
26	11
27	11
28	11
29	11
30	11
31	11
32	12
33	12
34	12
35	12
36	12
37	12
38	13
39	13
40	13
41	13
42	13
43	13
44	14
45	14
46	14
47	14
48	14

49	14
50	15
51	15
52	15
53	15
54	15
55	15
56	16
CONTACTS	17
Contact details	17
Telephones	17
Office hours	17
Address	17

SPECIFICATIONS

Overview

Dream Catcher is a 1999 *Sea Ray 420 Aft Cabin* with Caterpillar 3116 Diesels. She is very comfortable with three staterooms, ample walkways, and a cockpit that can accommodate all of your family and friends with ease. This is a great boat for hanging out, cruising, or even for full time living. She is ready for a showing today.

Basic Information

Category: Motor Yacht

Sub Category: Aft Cabin

Model Year: 1999

Year Built: 1999

Country: United States

Dimensions

LOA: 45' 5" (13.84mm)

Beam: 14.25

Max Draft: 3' 1" (0.94mm)

Speed, Capacities and Weight

Cruise Speed: 15 Knots Kts. (17 MPH)

Max Speed: 20 Knots Kts. (23 MPH)

Water Capacity: 120 Gallons

Holding Tank: 55 Gal Gallons

Fuel Capacity: 350 Gal Gallons

Accommodations

Total Cabins: 3

Total Heads: 2

Hull and Deck Information

Hull Material: Fiberglass

Engine Information

Engines: 2

Manufacturer: Caterpillar

Engine Type: Inboard

Fuel Type: Diesel

PHOTOS

2



3



4



5



6



7



8



9



10



11



12



13



14



15



16



17



18



19



20



21



22



23



24



25



26



27



28



29



30



31



32



33



34



35



36



37



38



39



40



41



42



43



44



45



46



47



48



49



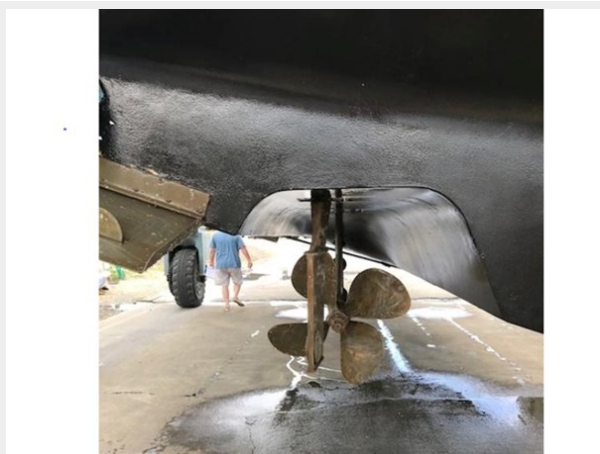
50



51



52



53



54



55



56



CONTACTS

Andrey Shestakov, leading yacht broker of the sales department of Shestakov Yacht Sales Inc. Shestakov Yacht Sales Inc., the official representative of the Miami/Fort Lauderdale FL headquarters.

Contact details

Email: **andrey@shestakovyachtsales.com**

Web: shestakovyachtsales.com/en/

Telephones

USA: +1(954)274-4435

Office hours

Monday – Saturday: **9:00 - 21:00** EDT

Sunday: **closed**

Address



Harbour Towne Marina, 850 NE 3rd St,
STE 213, Dania, FL 33004