

SANLORENZO SL106 #625 — SANLORENZO



Builder: SANLORENZO

Year Built: 2016

Model: Motor Yacht

Price: PRICE ON APPLICATION

LOA: 105' 8" (32.2mm)

Beam: 23.12

Max Draft: 6' 7" (2mm)

Cruise Speed: 24 Knots Kts. (28 MPH)

Max Speed: 28 Knots Kts. (32 MPH)

Our experienced yacht broker, Andrey Shestakov, will help you choose and buy a yacht that best suits your needs **Sanlorenzo SL106 #625 — SANLORENZO** from our catalogue. Presently, at Shestakov Yacht Sales Inc., we have a wide variety of yachts available on our sale's list. We also work in close contact with all the big yacht manufacturers from all over the world.

If you would like to buy a yacht **Sanlorenzo SL106 #625 — SANLORENZO** or would like help answering any questions concerning purchasing, selling or chartering a yacht, please call **+1(954)274-4435**

TABLE OF CONTENTS

TABLE OF CONTENTS	2
SPECIFICATIONS	3
Overview	3
Basic Information	3
Dimensions	3
Speed, Capacities and Weight	3
Accommodations	4
Hull and Deck Information	4
Engine Information	4
PHOTOS	5
CONTACTS	9
Contact details	9
Telephones	9
Office hours	9
Address	9

SPECIFICATIONS

Overview

Streamlined, elegant and well-balanced at the same time: this is the SL fleet, the planing yachts by Sanlorenzo. The range includes five models: SL78, SL86, SL102, SL106, SL118, with lengths from 24 to 37 meters. Every yacht, even the smallest, offers various interior layout possibilities and can be completely personalized in keeping with the tastes and passions of its owner. Sanlorenzo SL106-625 'Andiamo' sports the unmistakable Sanlorenzo style, matching elegance, balancing spaces, a well-balanced ratio of empty to occupied spaces and an extraordinary number of innovations while maintaining the identity of the Sanlorenzo planing fleet. In the SL106 the new interpretation of the space turns into a new distributive layout. The main characteristics of the main deck is the path connecting the living room with the dining room/family lounge at prow, which creates a strong spatial continuity permitting an immediate and full perception of the yacht length, from stern to prow, and achieving a depth of field very unusual for yachts of similar size.

Basic Information

Category: Motor Yacht

Model Year: 2016

Year Built: 2016

Dimensions

LOA: 105' 8" (32.2mm)

Beam: 23.12

Max Draft: 6' 7" (2mm)

Speed, Capacities and Weight

Cruise Speed: 24 Knots Kts. (28 MPH)

Max Speed: 28 Knots Kts. (32 MPH)

Water Capacity: 2800 Gallons

Holding Tank: 211.34 Gal Gallons

Fuel Capacity: 2192.63 Gal Gallons

Accommodations

Total Cabins: 5

Hull and Deck Information

Hull Material: GRP

Engine Information

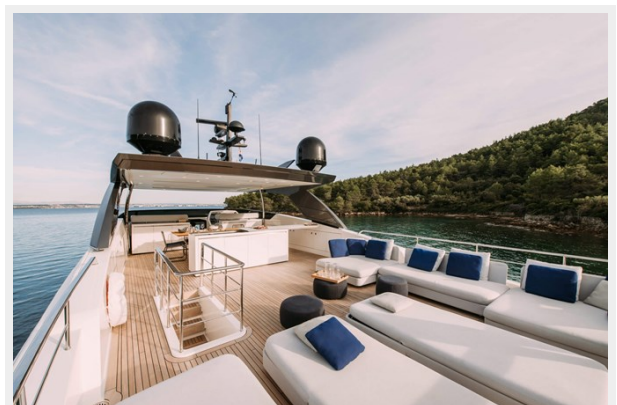
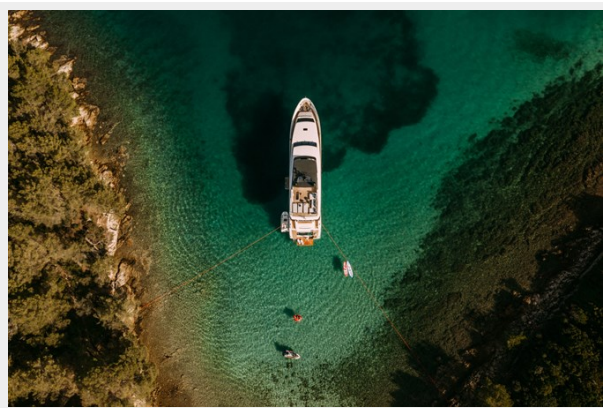
Engines: 2

Manufacturer: MTU

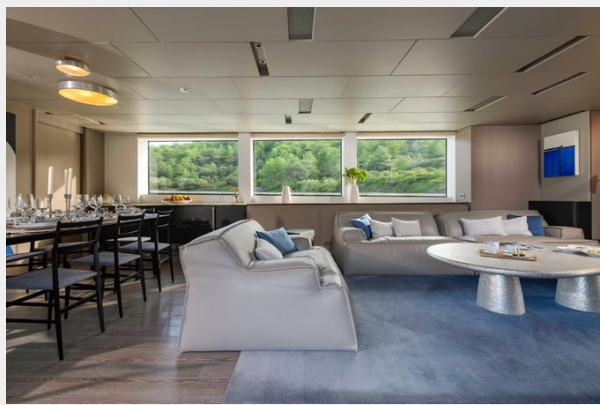
Engine Type: Inboard

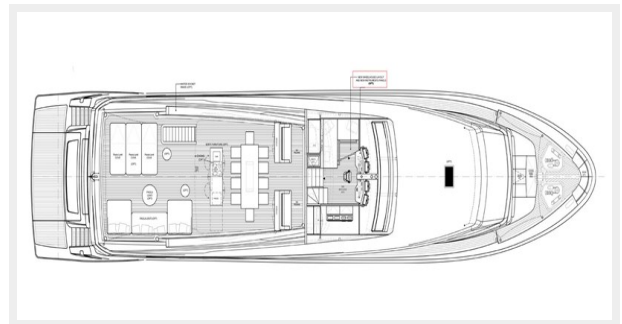
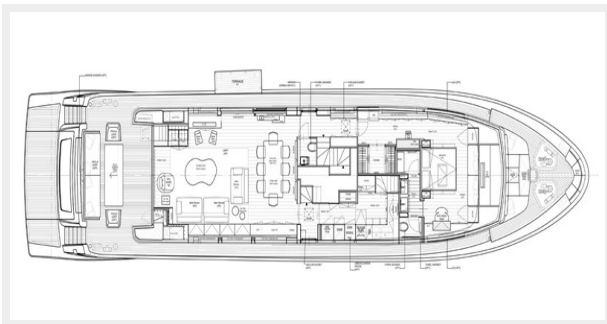
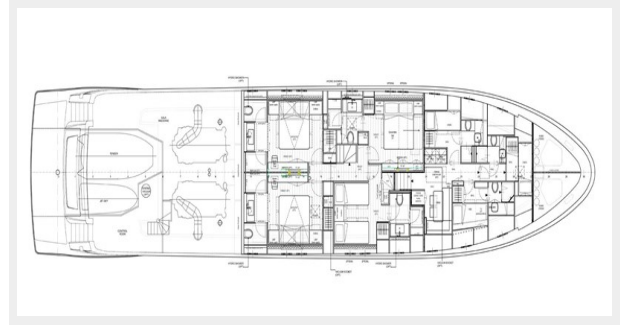
Fuel Type: Diesel

PHOTOS









CONTACTS

Andrey Shestakov, leading yacht broker of the sales department of Shestakov Yacht Sales Inc. Shestakov Yacht Sales Inc., the official representative of the Miami/Fort Lauderdale FL headquarters.

Contact details

Email: andrey@shestakovyachtsales.com

Web: shestakovyachtsales.com/en/

Telephones

USA: +1(954)274-4435

Office hours

Monday – Saturday: **9:00 - 21:00** EDT

Sunday: **closed**

Address



Harbour Towne Marina, 850 NE 3rd St,
STE 213, Dania, FL 33004