

FIORENTE — FERRONAVALE



Builder: FERRONAVALE

Year Built: 1990

Model: Motor Yacht

Price: PRICE ON APPLICATION

Location: Italy

LOA: 121' 5" (37mm)

Beam: 24.47

Max Draft: 9' 7" (2.9mm)

Cruise Speed: 12 Knots Kts. (14 MPH)

Max Speed: 14 Knots Kts. (16 MPH)

Our experienced yacht broker, Andrey Shestakov, will help you choose and buy a yacht that best suits your needs **FIORENTE — FERRONAVALE** from our catalogue. Presently, at Shestakov Yacht Sales Inc., we have a wide variety of yachts available on our sale's list. We also work in close contact with all the big yacht manufacturers from all over the world.

If you would like to buy a yacht **FIORENTE — FERRONAVALE** or would like help answering any questions concerning purchasing, selling or chartering a yacht, please call **+1(954)274-4435**

TABLE OF CONTENTS

TABLE OF CONTENTS	2
SPECIFICATIONS	4
Overview	4
Basic Information	4
Dimensions	4
Speed, Capacities and Weight	4
Accommodations	5
Hull and Deck Information	5
Engine Information	5
PHOTOS	6
FIORENTE_FERRONAVALE_1990 d'écran 2022-06-17 à 14.15.55	6
FIORENTE_FERRONAVALE_1990	6
FIORENTE_FERRONAVALE_1990 d'écran 2022-06-17 à 14.16.24	6
FIORENTE_FERRONAVALE_1990 d'écran 2022-06-17 à 14.16.10	6
FIORENTE_FERRONAVALE_1990 d'écran 2022-06-17 à 14.16.38	7
FIORENTE_FERRONAVALE_1990 d'écran 2022-06-17 à 14.16.58	7
FIORENTE_FERRONAVALE_1990 d'écran 2022-06-17 à 14.17.13	7
FIORENTE_FERRONAVALE_1990 d'écran 2022-06-17 à 14.17.27	7
FIORENTE_FERRONAVALE_1990 d'écran 2022-06-17 à 14.17.40	8
FIORENTE_FERRONAVALE_1990 d'écran 2022-06-17 à 14.17.54	8
FIORENTE_FERRONAVALE_1990 d'écran 2022-06-17 à 14.18.07	8
FIORENTE_FERRONAVALE_1990 d'écran 2022-06-17 à 14.18.23	8
FIORENTE_FERRONAVALE_1990 d'écran 2022-06-17 à 14.18.34	8
FIORENTE_FERRONAVALE_1990 d'écran 2022-06-17 à 14.18.50	8
FIORENTE_FERRONAVALE_1990 d'écran 2022-06-17 à 14.19.02	9
FIORENTE_FERRONAVALE_1990 d'écran 2022-06-17 à 14.19.14	9
FIORENTE_FERRONAVALE_1990 d'écran 2022-06-17 à 14.19.27	9
FIORENTE_FERRONAVALE_1990 d'écran 2022-06-17 à 14.19.46	9

FIORANTE_FERRONAVALE_1990 d'écran 2022-06-17 à 14.19.57	9
FIORANTE_FERRONAVALE_1990 d'écran 2022-06-17 à 14.20.12	9
FIORANTE_FERRONAVALE_1990 d'écran 2022-06-17 à 14.20.24	10
CONTACTS	11
Contact details	11
Telephones	11
Office hours	11
Address	11

SPECIFICATIONS

Overview

Custom-built and delivered in 1990, the 37 metre (121.93 ft) motor yacht Fiorente was extensively refit in 2016 to the exceptional standards of world-renowned builder Ferronavale. With original exterior by Studio Peterlin Ltd. and interior styling by the late unrivalled designer Alberto Pinto, the result is a truly classic Italian yacht with all the comfort and features of a contemporary build.

Basic Information

Category: Motor Yacht

Model Year: 1990

Year Built: 1990

Refit Type: FIORENTE has benefitted from an extensive refit from 2016-2018 to the perfectionist standard of her world-renowned Italian builder.

Country: Italy

Dimensions

LOA: 121' 5" (37mm)

Beam: 24.47

Max Draft: 9' 7" (2.9mm)

Speed, Capacities and Weight

Cruise Speed: 12 Knots Kts. (14 MPH)

Cruise Speed Range: 2800

Max Speed: 14 Knots Kts. (16 MPH)

Max Speed Range: 2500 Kts.

Gross Tonnage: 245 Pounds

Water Capacity: 12000 Gallons

Accommodations

Total Cabins: 5

Hull and Deck Information

Hull Material: Steel

Deck Material: Teak

Hull Configuration: Full Displacement

Exterior Designer: Studio Peterlin

Interior Designer: Alberto Pinto

Engine Information

Engines: 2

Manufacturer: Scania

Engine Type: Inboard

PHOTOS

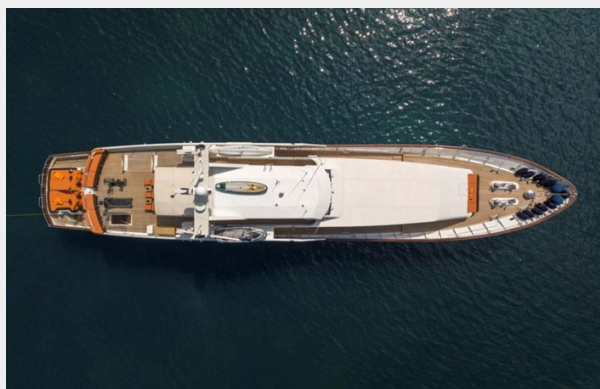
FIORENTE_FERRONAVALE_1990



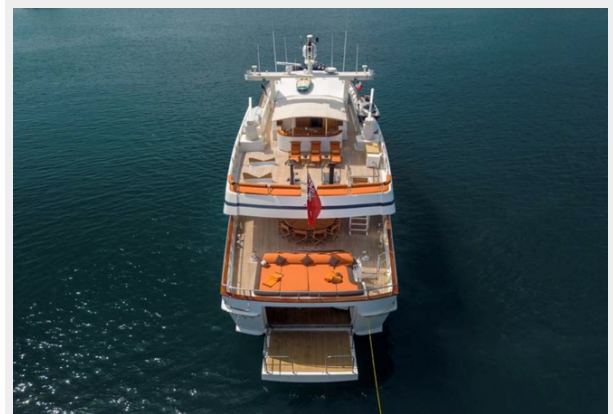
FIORENTE_FERRONAVALE_1990 d'écran
2022-06-17 à 14.15.55



FIORENTE_FERRONAVALE_1990 d'écran
2022-06-17 à 14.16.10



FIORENTE_FERRONAVALE_1990 d'écran
2022-06-17 à 14.16.24



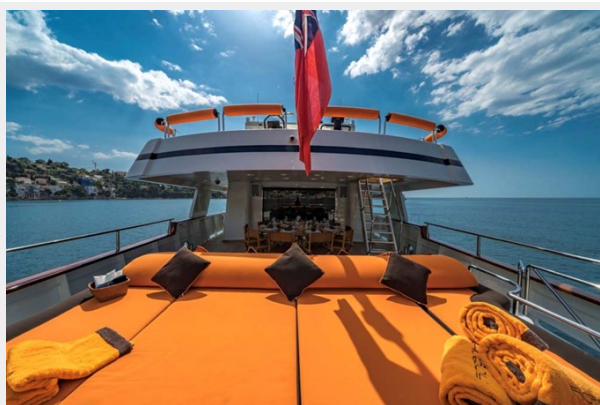
FIORENTE_FERRONAVALE_1990 d'écran
2022-06-17 à 14.16.38



FIORENTE_FERRONAVALE_1990 d'écran
2022-06-17 à 14.16.58



FIORENTE_FERRONAVALE_1990 d'écran
2022-06-17 à 14.17.13



FIORENTE_FERRONAVALE_1990 d'écran
2022-06-17 à 14.17.27



FIORANTE_FERRONAVALE_1990 d'écran
2022-06-17 à 14.17.40



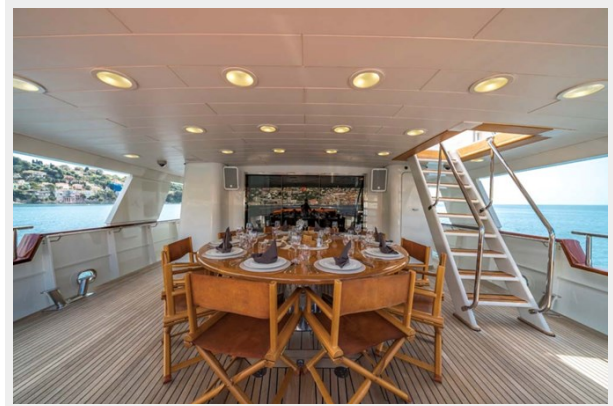
FIORANTE_FERRONAVALE_1990 d'écran
2022-06-17 à 14.17.54



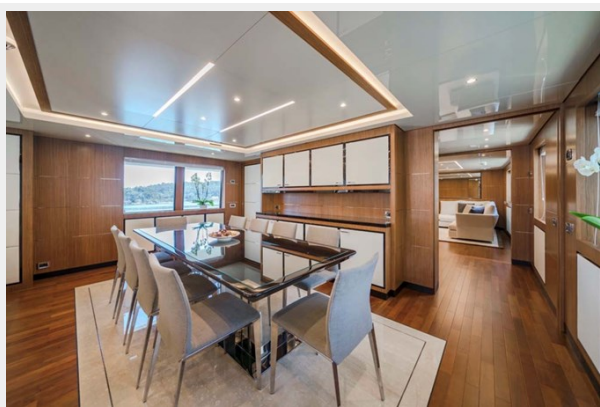
FIORANTE_FERRONAVALE_1990 d'écran
2022-06-17 à 14.18.07



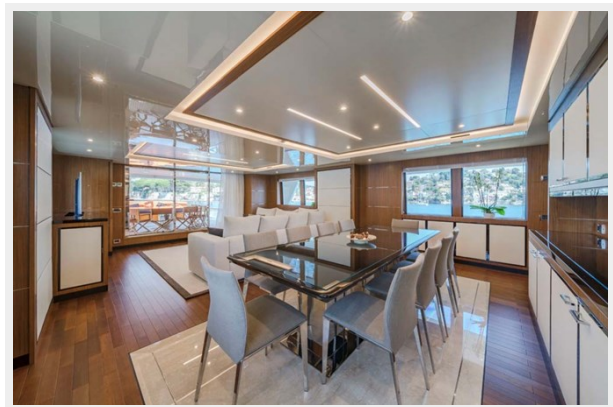
FIORANTE_FERRONAVALE_1990 d'écran
2022-06-17 à 14.18.23



FIORANTE_FERRONAVALE_1990 d'écran
2022-06-17 à 14.18.34



FIORANTE_FERRONAVALE_1990 d'écran
2022-06-17 à 14.18.50



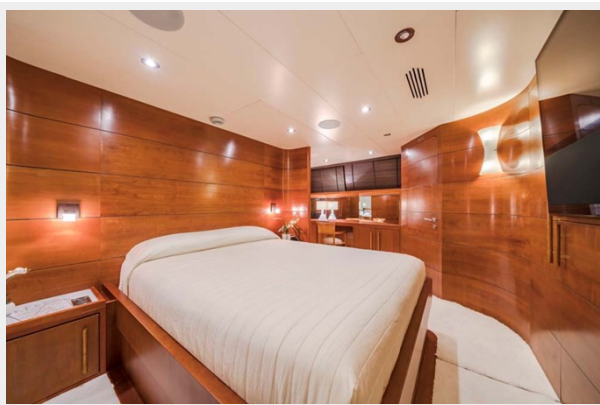
FIORENTE_FERRONAVALE_1990 d'écran
2022-06-17 à 14.19.02



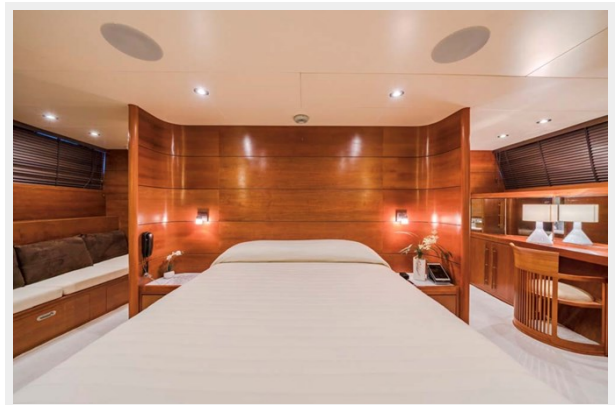
FIORENTE_FERRONAVALE_1990 d'écran
2022-06-17 à 14.19.14



FIORENTE_FERRONAVALE_1990 d'écran
2022-06-17 à 14.19.27



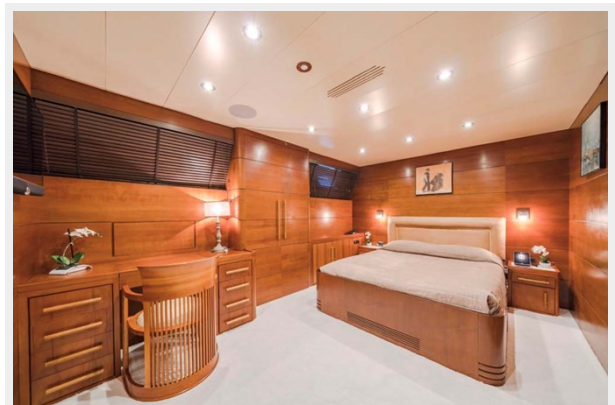
FIORENTE_FERRONAVALE_1990 d'écran
2022-06-17 à 14.19.46



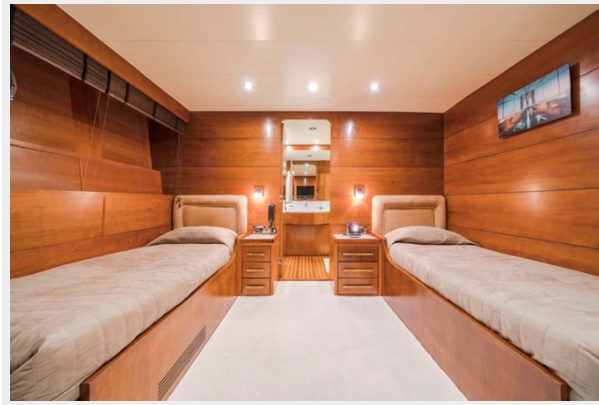
FIORENTE_FERRONAVALE_1990 d'écran
2022-06-17 à 14.19.57



FIORENTE_FERRONAVALE_1990 d'écran
2022-06-17 à 14.20.12



FIORANTE_FERRONAVALE_1990 d'écran 2022-06-17 à 14.20.24



CONTACTS

Andrey Shestakov, leading yacht broker of the sales department of Shestakov Yacht Sales Inc. Shestakov Yacht Sales Inc., the official representative of the Miami/Fort Lauderdale FL headquarters.

Contact details

Email: **andrey@shestakovyachtsales.com**

Web: shestakovyachtsales.com/en/

Telephones

USA: **+1(954)274-4435**

Office hours

Monday – Saturday: **9:00 - 21:00 EDT**

Sunday: **closed**

Address



Harbour Towne Marina, 850 NE 3rd St,
STE 213, Dania, FL 33004