

DIVINE MISS EM — SLOCUM



Builder: SLOCUM

Year Built: 1990

Model: Cutter

Price: PRICE ON APPLICATION

Location: United States

LOA: 43' (13.11mm)

Beam: 12.75

Min Draft: 5' 6" (1.68mm)

Max Draft: 6' (1.83mm)

Cruise Speed: 7 Knots Kts. (8 MPH)

Max Speed: 8.5 Knots Kts. (10 MPH)

Our experienced yacht broker, Andrey Shestakov, will help you choose and buy a yacht that best suits your needs **Divine Miss Em — SLOCUM** from our catalogue. Presently, at Shestakov Yacht Sales Inc., we have a wide variety of yachts available on our sale's list. We also work in close contact with all the big yacht manufacturers from all over the world.

If you would like to buy a yacht **Divine Miss Em — SLOCUM** or would like help answering any questions concerning purchasing, selling or chartering a yacht, please call **+1(954)274-4435**

TABLE OF CONTENTS

TABLE OF CONTENTS	2
SPECIFICATIONS	5
Overview	5
Basic Information	6
Dimensions	6
Speed, Capacities and Weight	6
Accommodations	6
Hull and Deck Information	6
Engine Information	7
PHOTOS	8
1_2790426_	8
0_2790426_	8
2_2790426_	8
3_2790426_	8
5_2790426_	8
4_2790426_	8
6_2790426_	9
7_2790426_	9
8_2790426_	9
9_2790426_	9
10_2790426_	9
11_2790426_	9
12_2790426_	10
13_2790426_	10
14_2790426_	10
15_2790426_	10
16_2790426_	10
17_2790426_	10

18_2790426_	11
19_2790426_	11
20_2790426_	11
21_2790426_	11
22_2790426_	11
23_2790426_	11
24_2790426_	12
25_2790426_	12
26_2790426_	12
27_2790426_	12
28_2790426_	12
29_2790426_	12
30_2790426_	13
31_2790426_	13
32_2790426_	13
33_2790426_	13
34_2790426_	13
35_2790426_	13
36_2790426_	14
37_2790426_	14
42_2790426_	14
43_2790426_	14
45_2790426_	14
44_2790426_	14
46_2790426_	15
47_2790426_	15
48_2790426_	15
49_2790426_	15
50_2790426_	16

CONTACTS	17
-----	-----
Contact details	17
-----	-----
Telephones	17
-----	-----
Office hours	17
-----	-----
Address	17
-----	-----

SPECIFICATIONS

Overview

1990 43 Slocum "Divine Miss Em"

Divine Miss Em is designed as a heavily built bluewater cutter with all running rigging led to her aft cockpit.

She is hull # 57, and is the last 43 Slocum to be built by the Hai-O Yacht Building Corporation in Taiwan.

Divine Miss Em is being constantly maintained & upgraded by her current owners of 17 years.

Some examples of the level of care in the last 5 years....

AC electrical system upgraded from 30 amp to 50 amp service

New house batteries (2023)

Pura San waste treatment system upgrade

All teak decking removed & replaced / set in epoxy

New mainsail with Mack Pac (2022)

New shaft/Cutlass Bearing/Tides Shaft Seal/Bottom Paint (2023)

New Gear & Throttle Cables 2023

New Axiom MFD Transducer 2023

If you are looking for a clean bluewater cruiser with low engine hours and all the upgrades ALREADY INSTALLED please come and see Divine Miss Em.

A quote below is from a CMS-NAMS Certified Marine Surveyor who did an Insurance Survey for the owner in May 2022.....

"In general, the vessel, "Divine Miss Em" was found to be structurally sound and in very good

overall mechanical and cosmetic condition due to a high level of maintenance and continued improvements and upgrades.

Basic Information

Category: Cutter

Model Year: 1990

Year Built: 1990

Country: United States

Dimensions

LOA: 43' (13.11mm)

LWL: 35' 9" (10.9mm)

Beam: 12.75

Min Draft: 5' 6" (1.68mm)

Max Draft: 6' (1.83mm)

Speed, Capacities and Weight

Cruise Speed: 7 Knots Kts. (8 MPH)

Max Speed: 8.5 Knots Kts. (10 MPH)

Water Capacity: 100 Gallons

Holding Tank: 15 Gal Gallons

Fuel Capacity: 214 Gal Gallons

Accommodations

Total Cabins: 2

Sleeps: 6

Total Heads: 1

Hull and Deck Information

Hull Material: Fiberglass

Engine Information

Engines: 1

Manufacturer: Yanmar

Engine Type: Inboard

Fuel Type: Diesel

PHOTOS

0_2790426_



1_2790426_



2_2790426_



3_2790426_



4_2790426_



5_2790426_



6_2790426_



7_2790426_



8_2790426_



9_2790426_



10_2790426_



11_2790426_



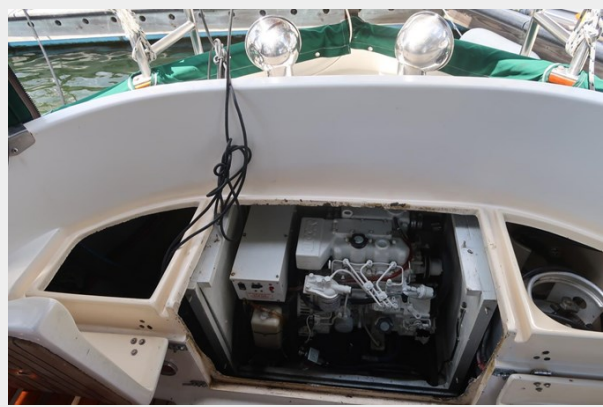
12_2790426_



13_2790426_



14_2790426_



15_2790426_



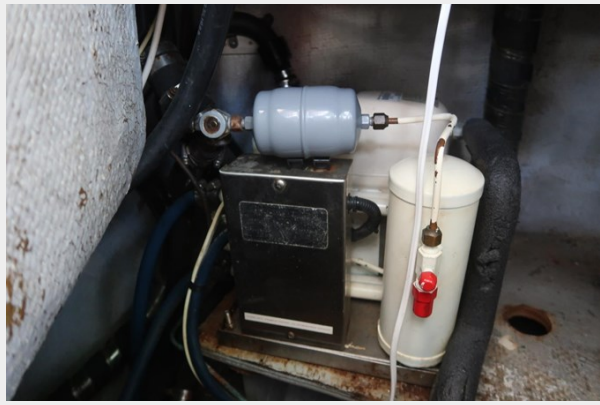
16_2790426_



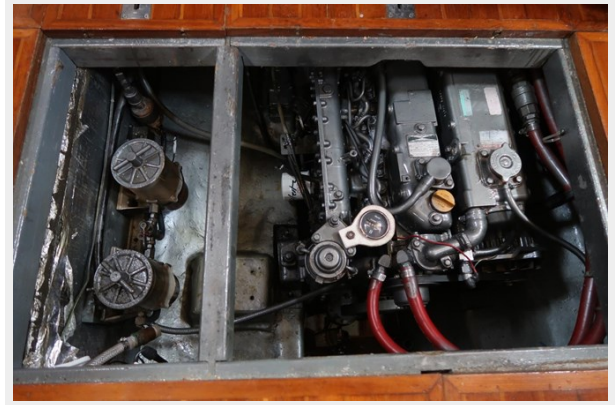
17_2790426_



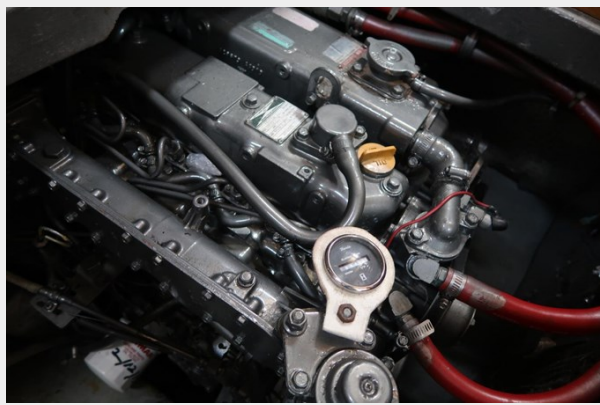
18_2790426_



19_2790426_



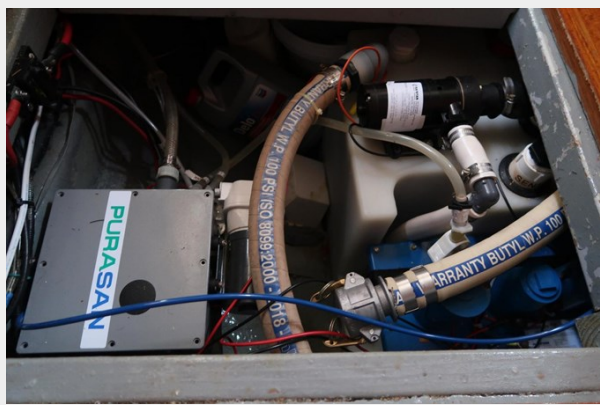
20_2790426_



21_2790426_



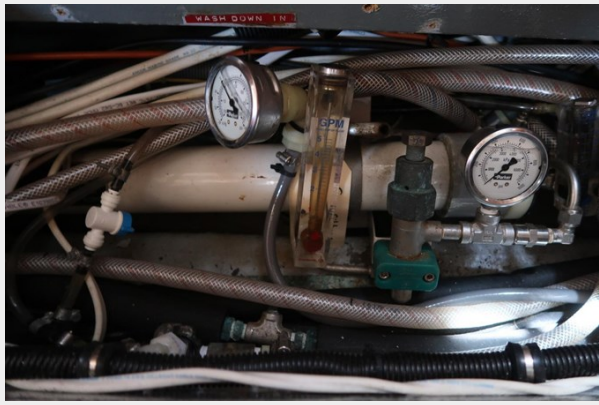
22_2790426_



23_2790426_



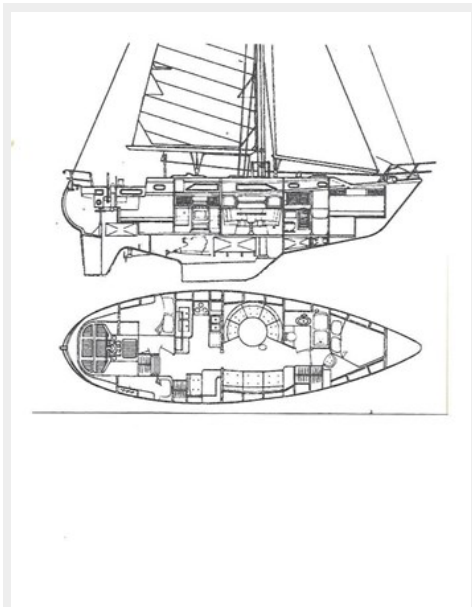
24_2790426_



25_2790426_



26_2790426_



27_2790426_



28_2790426_



29_2790426_



30_2790426_



31_2790426_



32_2790426_



33_2790426_



34_2790426_



35_2790426_



36_2790426_



37_2790426_



42_2790426_



43_2790426_

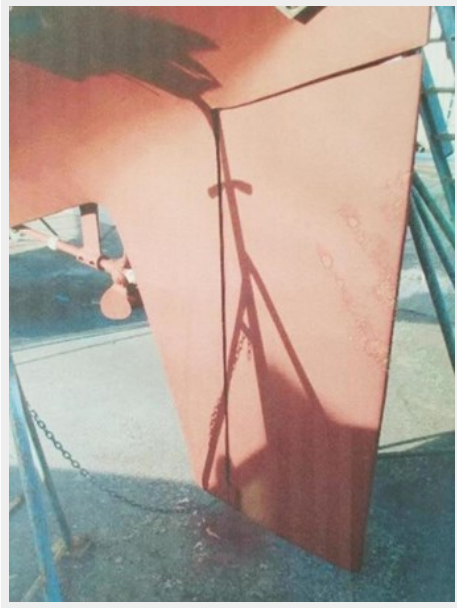


45_2790426_

44_2790426_



46_2790426_



47_2790426_



48_2790426_



49_2790426_



50_2790426_



CONTACTS

Andrey Shestakov, leading yacht broker of the sales department of Shestakov Yacht Sales Inc. Shestakov Yacht Sales Inc., the official representative of the Miami/Fort Lauderdale FL headquarters.

Contact details

Email: andrey@shestakovyachtsales.com

Web: shestakovyachtsales.com/en/

Telephones

USA: +1(954)274-4435

Office hours

Monday – Saturday: **9:00 - 21:00** EDT

Sunday: **closed**

Address



Harbour Towne Marina, 850 NE 3rd St,
STE 213, Dania, FL 33004