

WANDERING STAR — NIMBLE



Builder: NIMBLE

Year Built: 1996

Model: Trawler Yacht

Price: PRICE ON APPLICATION

Location: United States

LOA: 32' (9.75mm)

Min Draft: 2' 8" (0.81mm)

Max Draft: 3' (0.91mm)

Cruise Speed: 8 Knots Kts. (9 MPH)

Max Speed: 11 Knots Kts. (13 MPH)

Our experienced yacht broker, Andrey Shestakov, will help you choose and buy a yacht that best suits your needs **Wandering Star — NIMBLE** from our catalogue. Presently, at **Shestakov Yacht Sales Inc.**, we have a wide variety of yachts available on our sale's list. We also work in close contact with all the big **yacht manufacturers** from all over the world.

If you would like to buy a yacht **Wandering Star — NIMBLE** or would like help answering any questions concerning purchasing, selling or chartering a yacht, please call **+1(954)274-4435**

TABLE OF CONTENTS

TABLE OF CONTENTS	2
SPECIFICATIONS	5
Overview	5
Basic Information	5
Dimensions	5
Speed, Capacities and Weight	5
Accommodations	5
Hull and Deck Information	5
Engine Information	5
PHOTOS	6
2_2790410_1002_wandering_star	6
1_2790410_1001_wandering_star	6
3_2790410_1003_wandering_star	6
4_2790410_1004_wandering_star	6
6_2790410_1006_wandering_star_windlass	6
5_2790410_1005_wandering_star_foredeck	6
7_2790410_1007_wandering_starforedeck	6
8_2790410_1008_wandering_star_butterfly_hatch	6
9_2790410_1009_wandering_star_shore_power	6
10_2790410_1010_wandering_star_cockpit	6
11_2790410_1011_wandering_star_cockpit_fwd	7
12_2790410_1012_wandering_star_cockpit_aft	7
14_2790410_1014_wandering_star_tender	7
13_2790410_1013_wandering_star_aft_helm	7
15_2790410_1015_wandering_star_cabin_entrance	7
16_2790410_1016_wandering_star_main_cabin	7
18_2790410_1018_wandering_star_dinette	7
17_2790410_1017_wandering_star_main_cabin_starboard	7

20_2790410_1020_wandering_star_helm_aft	7
19_2790410_1019_wandering_star_helm	7
22_2790410_1022_wandering_star_bow_thruster_control	8
21_2790410_1021_wandering_star_helm	8
23_2790410_1023_wandering_star_windlass_control	8
24_2790410_1024_wandering_star_engine_panel	8
25_2790410_1025_wandering_star_guages	8
26_2790410_1026_wandering_star_vhf	8
28_2790410_1028_wandering_star_upgrades	8
27_2790410_1027_wandering_star_electrical_distribution	8
29_2790410_1029_wandering_star_wiring_upgrade	9
30_2790410_1030_wandering_star_galley_down	9
31_2790410_1031_wandering_star_galley	9
32_2790410_1032_wandering_star_galley_basin	9
34_2790410_1034_wandering_star_cooktop	9
33_2790410_1033_wandering_star_galley_fwd	9
36_2790410_1036_wandering_star_refrigerator	9
35_2790410_1035_wandering_star_cooktop_cabin_heater	9
37_2790410_1037_wandering_star_galley_fwd	9
38_2790410_1038_wandering_star_v_berth_starboard	9
39_2790410_1039_wandering_star_v_berth_port	10
40_2790410_1040_wandering_star_v_berth_aft	10
42_2790410_1042_wandering_star_head	10
41_2790410_1041_wandering_star_fwd_hatch	10
43_2790410_1043_wandering_star_shower	10
44_2790410_1044_wandering_star_head_basin	10
45_2790410_1045_wandering_star_engine_compartment	10
46_2790410_1046_wandering_star_engine_compartment_aft	10
47_2790410_1047_wandering_star_transmission	11

48_2790410_1048_wandering_star_dripless_shaft_seal	11
49_2790410_1049_wandering_star_engine_compartment_fwd	11
50_2790410_1050_wandering_star_engine_fwd	11
CONTACTS	12
Contact details	12
Telephones	12
Office hours	12
Address	12

SPECIFICATIONS

Overview

The Nimble Wanderer was designed by Ted Brewer with traditional esthetics and sturdy construction. With only 3' of draft and low bridge clearance this rugged little pocket cruiser can explore many areas inaccessible by vessels with similar comforts and amenities. She cruises at 8 knots (@ 2000 rpm) burning only 1.2 gallon per hour for a range of over 500 miles. The Wanderer is designed to be easily transported by trailer so she can explore inland lakes as well.

Wandering Star has been continually upgraded and kept in top notch shape. The current owners have equipped her very well to do the Great Loop voyage, with bow thruster, electronics including chart-plotter, sounder, AIS, VHF, autopilot and much more. Please see full listing for all the details including video and 360 photos. Wandering Star is available to see by appointment in New Bern North Carolina.

Basic Information

Category: Trawler Yacht

Model Year: 1996

Year Built: 1996

Country: United States

Dimensions

LOA: 32' (9.75mm)

Min Draft: 2' 8" (0.81mm)

Max Draft: 3' (0.91mm)

Speed, Capacities and Weight

Cruise Speed: 8 Knots Kts. (9 MPH)

Max Speed: 11 Knots Kts. (13 MPH)

Water Capacity: 70 Gallons

Holding Tank: 20 Gal Gallons

Fuel Capacity: 70 Gal Gallons

Accommodations

Total Cabins: 2

Sleeps: 4

Total Heads: 1

Hull and Deck Information

Hull Material: Fiberglass

Engine Information

Engines: 1

Manufacturer: Yanmar

Engine Type: Inboard

Fuel Type: Diesel

PHOTOS

1_2790410_1001_wandering_star



2_2790410_1002_wandering_star



3_2790410_1003_wandering_star



4_2790410_1004_wandering_star



5_2790410_1005_wandering_star_foredeck



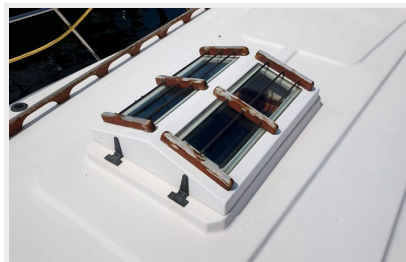
6_2790410_1006_wandering_star_windlass



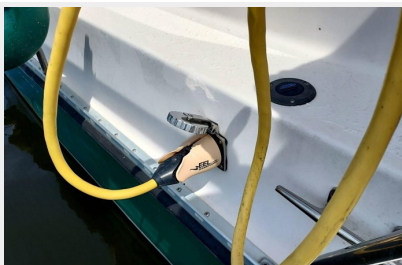
7_2790410_1007_wandering_starforedeck



8_2790410_1008_wandering_star_butterfly_hatch



9_2790410_1009_wandering_star_shore_power



10_2790410_1010_wandering_star_cockpit



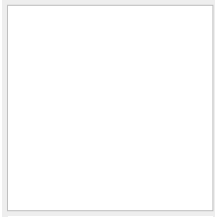
11_2790410_1011_wandering_star_cockpit_fwd



12_2790410_1012_wandering_star_cockpit_aft



13_2790410_1013_wandering_star_aft_helm



14_2790410_1014_wandering_star_tender



15_2790410_1015_wandering_star_cabin_entrance



16_2790410_1016_wandering_star_main_cabin



17_2790410_1017_wandering_star_main_cabin_starboard



18_2790410_1018_wandering_star_dinette



19_2790410_1019_wandering_star_helm



20_2790410_1020_wandering_star_helm_aft



21_2790410_1021_wandering_star_helm



22_2790410_1022_wandering_star_bow_thruster_control



23_2790410_1023_wandering_star_windlass_control



24_2790410_1024_wandering_star_engine_panel



25_2790410_1025_wandering_star_gauges



26_2790410_1026_wandering_star_vhf



28_2790410_1028_wandering_star_upgrades

27_2790410_1027_wandering_star_electrical_distribution



29_2790410_1029_wandering_star_wiring_upgrade



30_2790410_1030_wandering_star_galley_down



31_2790410_1031_wandering_star_galley



32_2790410_1032_wandering_star_galley_basin



33_2790410_1033_wandering_star_galley_fwd



34_2790410_1034_wandering_star_cooktop



35_2790410_1035_wandering_star_cooktop_cabin_heater



36_2790410_1036_wandering_star_refrigerator



37_2790410_1037_wandering_star_galley_fwd



38_2790410_1038_wandering_star_v_berth_starboard



39_2790410_1039_wandering_star_v_berth_port



40_2790410_1040_wandering_star_v_berth_aft



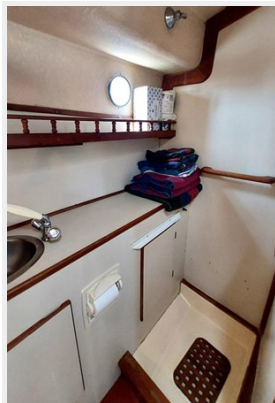
41_2790410_1041_wandering_star_fwd_hatch



42_2790410_1042_wandering_star_head



43_2790410_1043_wandering_star_shower



44_2790410_1044_wandering_star_head_basin



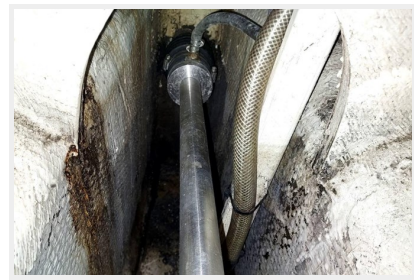
45_2790410_1045_wandering_star_engine_compartment 46_2790410_1046_wandering_star_engine_compartment_aft



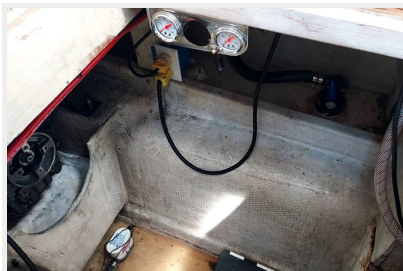
47_2790410_1047_wandering_star_transmission



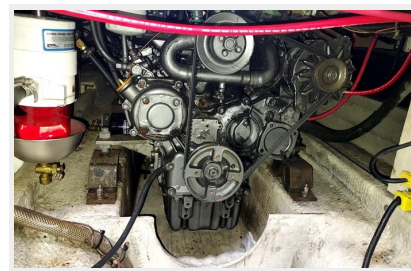
48_2790410_1048_wandering_star_dripleless_shaft_seal



49_2790410_1049_wandering_star_engine_compartment_fwd



50_2790410_1050_wandering_star_engine_fwd



CONTACTS

Andrey Shestakov, leading yacht broker of the sales department of Shestakov Yacht Sales Inc. Shestakov Yacht Sales Inc., the official representative of the Miami/Fort Lauderdale FL headquarters.

Contact details

Email:
andrey@shestakovyachtsales.com

Web: shestakovyachtsales.com/en/

Telephones

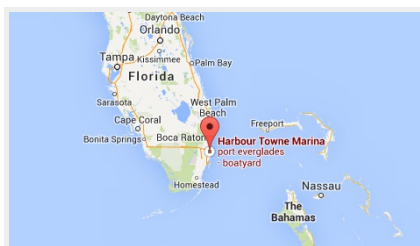
USA: **+1(954)274-4435**

Office hours

Monday - Saturday: **9:00 - 21:00 EDT**

Sunday: **closed**

Address



Harbour Towne Marina, 850 NE 3rd
St, STE 213, Dania, FL 33004