

WASTED AWAVE AGAIN — MAINSHIP



Builder: MAINSHIP

Year Built: 2004

Model: Trawler Yacht

Price: PRICE ON APPLICATION

LOA: 40' (12.19mm)

Beam: 14.16

Max Draft: 3' 8" (1.12mm)

Cruise Speed: 12 Knots Kts. (14 MPH)

Max Speed: 15 Knots Kts. (17 MPH)

Our experienced yacht broker, Andrey Shestakov, will help you choose and buy a yacht that best suits your needs **Wasted Awave Again — MAINSHIP** from our catalogue. Presently, at **Shestakov Yacht Sales Inc.**, we have a wide variety of yachts available on our sale's list. We also work in close contact with all the big **yacht manufacturers** from all over the world.

If you would like to buy a yacht **Wasted Awave Again — MAINSHIP** or would like help answering any questions concerning purchasing, selling or chartering a yacht, please call **+1(954)274-4435**

TABLE OF CONTENTS

TABLE OF CONTENTS	2
SPECIFICATIONS	5
Overview	5
Basic Information	5
Dimensions	5
Speed, Capacities and Weight	5
Accommodations	5
Hull and Deck Information	6
Engine Information	6
PHOTOS	7
0_2790446_wasted_awake_again	7
1_2790446_profile_starboard_bow	7
2_2790446_profile_bow	7
3_2790446_profile_port_bow	7
4_2790446_cockpit_port	7
6_2790446_cockpit_starboard	7
7_2790446_cockpit_forward	7
8_2790446_main_cabin_forward	7
9_2790446_main_cabin_port	8
10_2790446_main_cabin_dinette	8
11_2790446_main_cabin_starboard	8
12_2790446_main_cabin_helm	8
13_2790446_main_cabin_aft	8
14_2790446_master_stateroom_forward	8
15_2790446_master_stateroom_port	8
16_2790446_master_stateroom_starboard	8
17_2790446_guest_stateroom	9
18_2790446_guest_stateroom	9

19_2790446_head	9
20_2790446_flybridge_forward	9
21_2790446_flybridge_helm_wide	9
22_2790446_flybridge_helm	9
23_2790446_flybridge_port	10
24_2790446_flybridge_starboard	10
25_2790446_flybridge_aft	10
26_2790446_flybridge_aft_deck_aft	10
27_2790446_flybridge_aft_deck_forward	10
28_2790446_flybridge_summer_kitchen	10
29_2790446_port_walkway	11
30_2790446_starboard_walkway	11
31_2790446_fore_deck	11
32_2790446_bow_pulpit	11
33_2790446_ground_tackle	11
34_2790446_hinged_mast	11
35_2790446_outboard	12
36_2790446_tender	12
37_2790446_main_engine	12
38_2790446_fuel_filters	12
39_2790446_fire_supression	12
40_2790446_fire_supression	12
42_2790446_oil_changer	13
41_2790446_dripless_shaft_seal	13
43_2790446_water_heater	13
44_2790446_water_maker	13
45_2790446_generator	13
46_2790446_battery_bank_port	13
47_2790446_battery_bank_starboard	14

48_2790446_generator_battery	14
49_2790446_battery_charger	14
50_2790446_battery_charger	14
51_2790446_ac_electrical_panel	14
CONTACTS	15
Contact details	15
Telephones	15
Office hours	15
Address	15

SPECIFICATIONS

Overview

Wasted Awake Again is a 2004 Mainship 400 sedan trawler in nice condition. She offers a single Yanmar 370 hp main engine, Kohler 8 kW generator, bow and stern thruster (stern thruster currently inoperative), oil change system, molded-in steps to the fully enclosed flybridge, Achilles tender with 6 hp Tohatsu outboard, Sea Wise davit system on the swim platform, watermaker, laminate teak and holly salon sole instead of carpet. She is a Great Loop veteran, turn key and ready to cruise immediately.

Basic Information

Category: Trawler Yacht

Model Year: 2004

Year Built: 2004

Dimensions

LOA: 40' (12.19mm)

Beam: 14.16

Max Draft: 3' 8" (1.12mm)

Speed, Capacities and Weight

Cruise Speed: 12 Knots Kts. (14 MPH) **Max Speed:** 15 Knots Kts. (17 MPH)

Water Capacity: 130 Gallons

Holding Tank: 47 Gal Gallons

Fuel Capacity: 300 Gal Gallons

Accommodations

Total Cabins: 2

Total Heads: 1

Hull and Deck Information

Hull Material: Fiberglass

Engine Information

Engines: 1

Manufacturer: Yanmar

PHOTOS

0_2790446_wasted_away_again



1_2790446_profile_starboard_bow



2_2790446_profile_bow



3_2790446_profile_port_bow



4_2790446_cockpit_port



6_2790446_cockpit_starboard



7_2790446_cockpit_forward



8_2790446_main_cabin_forward



9_2790446_main_cabin_port



10_2790446_main_cabin_dinette



11_2790446_main_cabin_starboard



12_2790446_main_cabin_helm



13_2790446_main_cabin_aft



14_2790446_master_stateroom_forward



15_2790446_master_stateroom_port 16_2790446_master_stateroom_starboard



17_2790446_guest_stateroom



18_2790446_guest_stateroom



19_2790446_head



20_2790446_flybridge_forward



21_2790446_flybridge_helm_wide



22_2790446_flybridge_helm



23_2790446_flybridge_port



24_2790446_flybridge_starboard



25_2790446_flybridge_aft



26_2790446_flybridge_aft_deck_aft



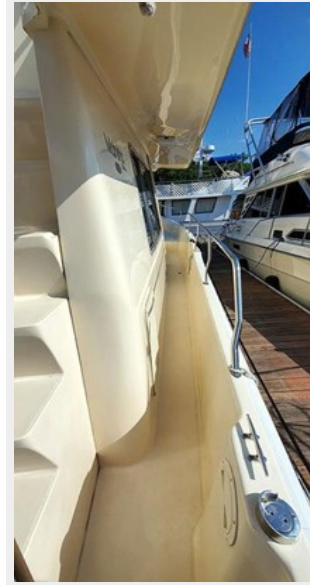
27_2790446_flybridge_aft_deck_forward 28_2790446_flybridge_summer_kitchen



29_2790446_port_walkway



30_2790446_starboard_walkway



31_2790446_fore_deck



32_2790446_bow_pulpit



33_2790446_ground_tackle



34_2790446_hinged_mast



35_2790446_outboard



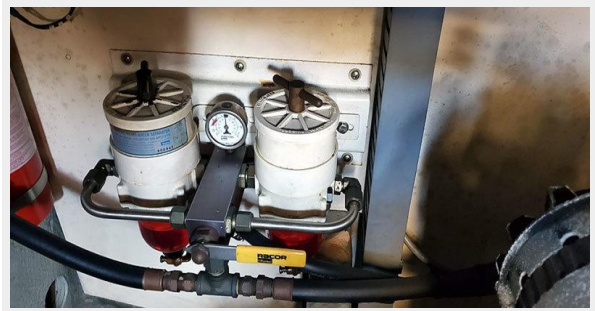
36_2790446_tender



37_2790446_main_engine



38_2790446_fuel_filters



39_2790446_fire_supression



40_2790446_fire_supression



41_2790446_dripless_shaft_seal



42_2790446_oil_changer



43_2790446_water_heater



44_2790446_water_maker



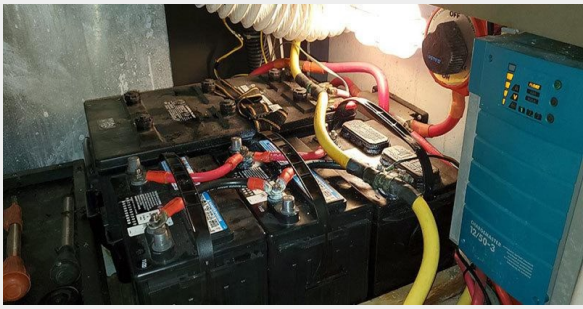
45_2790446_generator



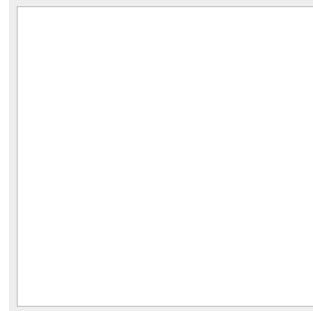
46_2790446_battery_bank_port



47_2790446_battery_bank_starboard



48_2790446_generator_battery



49_2790446_battery_charger



50_2790446_battery_charger



51_2790446_ac_electrical_panel



CONTACTS

Andrey Shestakov, leading yacht broker of the sales department of Shestakov Yacht Sales Inc. Shestakov Yacht Sales Inc., the official representative of the Miami/Fort Lauderdale FL headquarters.

Contact details

Email: **andrey@shestakovyachtsales.com**

Web: shestakovyachtsales.com/en/

Telephones

USA: **+1(954)274-4435**

Office hours

Monday - Saturday: **9:00 - 21:00** EDT

Sunday: **closed**

Address



Harbour Towne Marina, 850 NE 3rd St, STE 213, Dania, FL 33004