

DAYS LIKE THIS — AZIMUT YACHTS



Builder: [AZIMUT YACHTS](#)

Year Built: 2014

Model: Motor Yacht

Price: PRICE ON APPLICATION

Location: United States

LOA: 70' 11" (21.62mm)

Beam: 18.25

Max Draft: 5' 4" (1.63mm)

Cruise Speed: 28 Knots Kts. (32 MPH)

Max Speed: 34 Knots Kts. (39 MPH)

Our experienced yacht broker, Andrey Shestakov, will help you choose and buy a yacht that best suits your needs **DAYS LIKE THIS — AZIMUT YACHTS** from our catalogue. Presently, at Shestakov Yacht Sales Inc., we have a wide variety of yachts available on our sale's list. We also work in close contact with all the big yacht manufacturers from all over the world.

If you would like to buy a yacht **DAYS LIKE THIS — AZIMUT YACHTS** or would like help answering any questions concerning purchasing, selling or chartering a yacht, please call **+1(954)274-4435**

TABLE OF CONTENTS

TABLE OF CONTENTS	2
SPECIFICATIONS	3
Overview	3
Basic Information	3
Dimensions	3
Speed, Capacities and Weight	3
Accommodations	4
Hull and Deck Information	4
Engine Information	4
PHOTOS	5
CONTACTS	16
Contact details	16
Telephones	16
Office hours	16
Address	16

SPECIFICATIONS

Overview

New to the market, 2014 Azimut 70FLY. (Day's Like This) checks every box for desirable equipment for a buyer in today's market. She features a 4-stateroom, 4-head layout. The full beam, mid-ship master stateroom features a marine king size berth and ensuite head. Queen berths are featured in the VIP and port side guest rooms. The starboard guest room features two twin beds. All three additional staterooms feature en-suite heads. In addition to her guest quarters, she also features a captain's cabin with full size berth and an additional crew cabin with a single berth. Dual SeaKeeper gyro stabilizers, twin Kohler 20kw Generators, bow and stern thrusters, joystick control, and yacht controller to name a few. In addition, she has been very well maintained, and her interior is clean with a stunning brushed teakwood finish.

Her MAN V-12 1360 hp engines have low hours and provide an effortless 27/28kt cruise and a top end of 32kts. The owners are moving up to a larger yacht and are keen to sell!

Basic Information

Category: Motor Yacht

Sub Category: Flybridge

Model Year: 2014

Year Built: 2014

Country: United States

Dimensions

LOA: 70' 11" (21.62mm)

Beam: 18.25

Max Draft: 5' 4" (1.63mm)

Speed, Capacities and Weight

Cruise Speed: 28 Knots Kts. (32 MPH)

Max Speed: 34 Knots Kts. (39 MPH)

Water Capacity: 317 Gallons

Holding Tank: 119 Gal Gallons

Fuel Capacity: 1268 Gal Gallons

Accommodations

Total Cabins: 5

Total Heads: 5

Hull and Deck Information

Hull Material: Fiberglass

Deck Material: Fiberglass

Hull Configuration: Modified V-Hull

Hull Color: Silver

Engine Information

Engines: 2

Manufacturer: MAN

Engine Type: Inboard

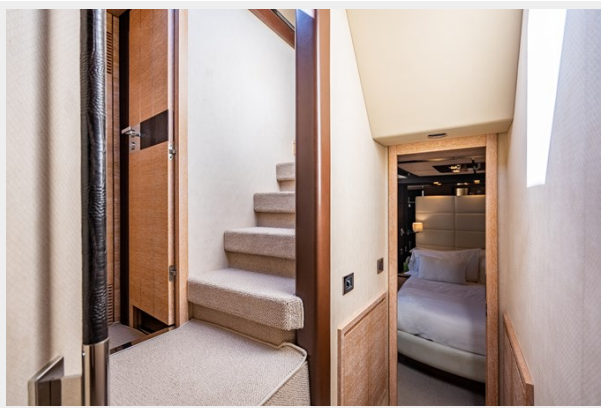
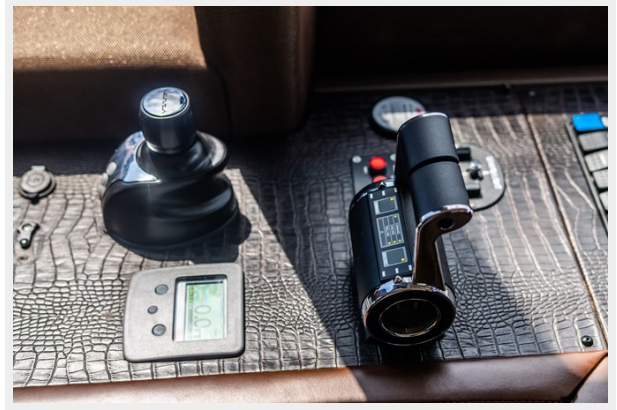
Fuel Type: Diesel

PHOTOS



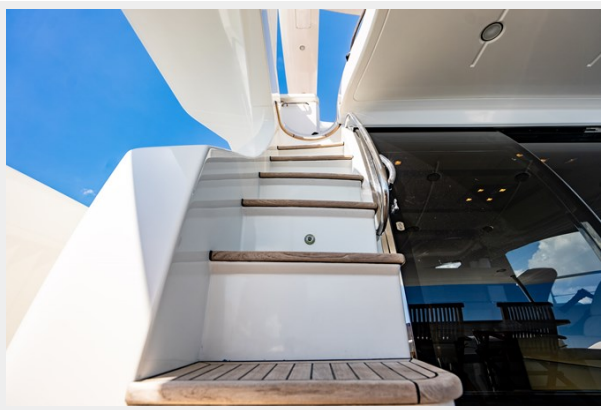
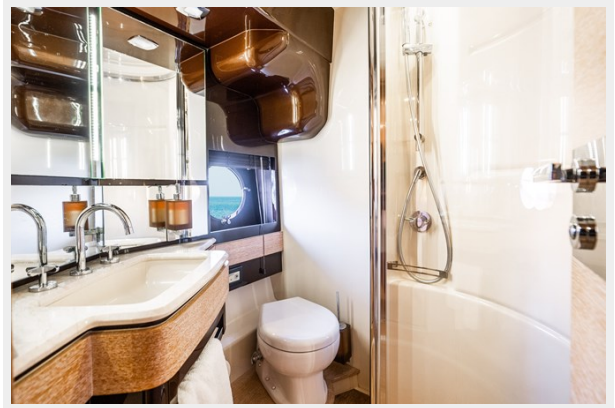




















CONTACTS

Andrey Shestakov, leading yacht broker of the sales department of Shestakov Yacht Sales Inc. Shestakov Yacht Sales Inc., the official representative of the Miami/Fort Lauderdale FL headquarters.

Contact details

Email: andrey@shestakovyachtsales.com

Web: shestakovyachtsales.com/en/

Telephones

USA: +1(954)274-4435

Office hours

Monday – Saturday: **9:00 - 21:00** EDT

Sunday: **closed**

Address



Harbour Towne Marina, 850 NE 3rd St,
STE 213, Dania, FL 33004