

TWIZZLE — ROYAL HUISMAN



Builder: ROYAL HUISMAN

Year Built: 2010

Model: Cruising Ketch

Price: PRICE ON APPLICATION

LOA: 188' 8" (57.5m)

Beam: 38.02

Min Draft: 12' 6" (3.8m)

Max Draft: 36' 2" (11m)

Cruise Speed: 11 Knots Kts. (13 MPH)

Max Speed: 13 Knots Kts. (15 MPH)

Our experienced yacht broker, Andrey Shestakov, will help you choose and buy a yacht that best suits your needs **TWIZZLE — ROYAL HUISMAN** from our catalogue. Presently, at Shestakov Yacht Sales Inc., we have a wide variety of yachts available on our sale's list. We also work in close contact with all the big yacht manufacturers from all over the world.

If you would like to buy a yacht **TWIZZLE — ROYAL HUISMAN** or would like help answering any questions concerning purchasing, selling or chartering a yacht, please call **+1(954)274-4435**

TABLE OF CONTENTS

TABLE OF CONTENTS	2
SPECIFICATIONS	4
Overview	4
Basic Information	4
Dimensions	4
Speed, Capacities and Weight	4
Accommodations	4
Hull and Deck Information	5
Engine Information	5
PHOTOS	6
TWIZZLE_Page_02	6
espec_zwizzle_oct17-vm.pdf-000	6
TWIZZLE_Page_14_Image_0001	6
TWIZZLE_Page_10_Image_0001	6
TWIZZLE_Page_17_Image_0001	6
TWIZZLE_Page_16_Image_0001	6
TWIZZLE_Page_18_Image_0001	7
salon	7
TWIZZLE_Page_21_Image_0001	7
TWIZZLE_Page_22_Image_0001	7
TWIZZLE_Page_23_Image_0001	7
TWIZZLE_Page_24_Image_0001	7
TWIZZLE_Page_25_Image_0001	8
TWIZZLE_Page_26_Image_0001	8
TWIZZLE_Page_27_Image_0001	8
TWIZZLE_Page_28_Image_0001	8
TWIZZLE_Page_30_Image_0001	8
TWIZZLE_Page_29_Image_0001	8

TWIZZLE_Page_31_Image_0001	9
TWIZZLE_Page_37_Image_0001	9
TWIZZLE_Page_33_Image_0001	9
TWIZZLE_Page_34_Image_0001	9
TWIZZLE_Page_09_Image_0001	9
TWIZZLE_Page_06_Image_0001	9
TWIZZLE_Page_07_Image_0001	10
DJI_0802	10
CONTACTS	11
Contact details	11
Telephones	11
Office hours	11
Address	11

SPECIFICATIONS

Overview

N/A

Basic Information

Category: Cruising Ketch

Model Year: 2010

Year Built: 2010

Dimensions

LOA: 188' 8" (57.5mm)

LWL: 160' 8" (48.95mm)

Beam: 38.02

Min Draft: 12' 6" (3.8mm)

Max Draft: 36' 2" (11mm)

Speed, Capacities and Weight

Cruise Speed: 11 Knots Kts. (13 MPH)

Cruise Speed Range: 4000

Max Speed: 13 Knots Kts. (15 MPH)

Gross Tonnage: 496 Pounds

Water Capacity: 11700 Gallons

Fuel Capacity: 11663.2 Gal Gallons

Accommodations

Total Cabins: 4

Sleeps: 9

Crew Cabin: 11

Crew Berths: 11

Hull and Deck Information

Hull Material: Aluminum

Deck Material: Teak

Hull Configuration: Daggerboards

Exterior Designer: RWD

Interior Designer: RWD, Todhunter Earl
Design

Engine Information

Engines: 1

Manufacturer: Caterpillar

PHOTOS

TWIZZLE_Page_02



espec_zwizzle_oct17-vm.pdf-000



TWIZZLE_Page_14_Image_0001



TWIZZLE_Page_10_Image_0001



TWIZZLE_Page_17_Image_0001



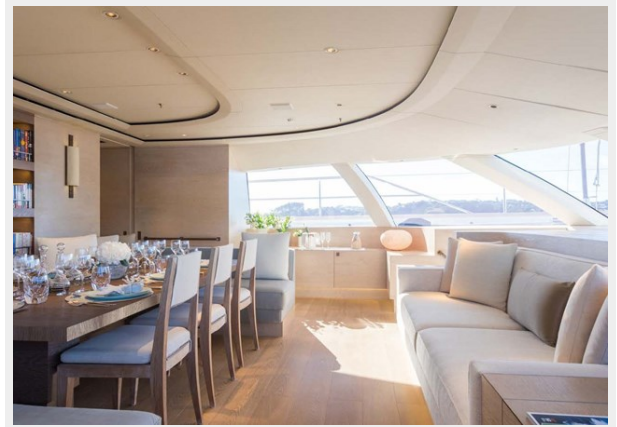
TWIZZLE_Page_16_Image_0001



salon



TWIZZLE_Page_18_Image_0001



TWIZZLE_Page_21_Image_0001



TWIZZLE_Page_22_Image_0001



TWIZZLE_Page_23_Image_0001



TWIZZLE_Page_24_Image_0001



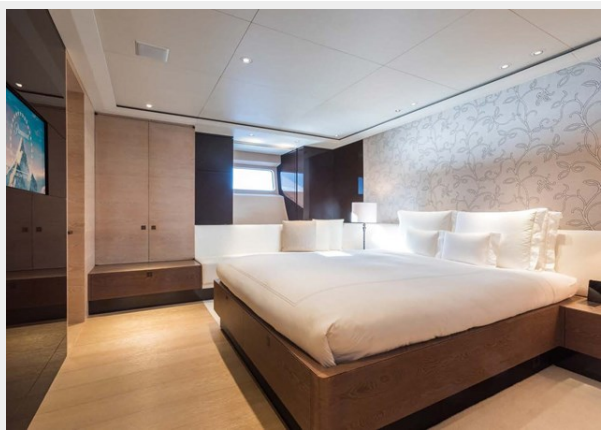
TWIZZLE_Page_25_Image_0001



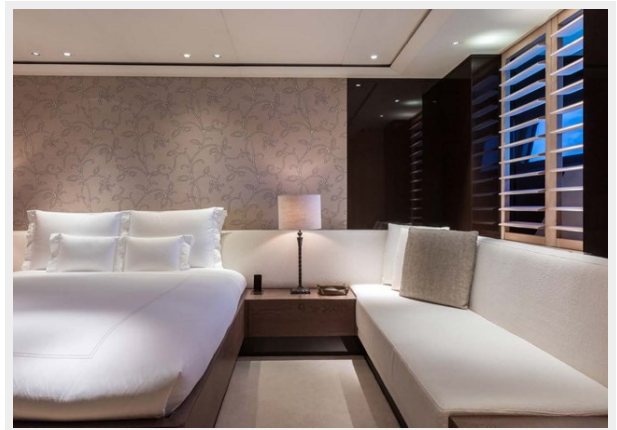
TWIZZLE_Page_26_Image_0001



TWIZZLE_Page_27_Image_0001



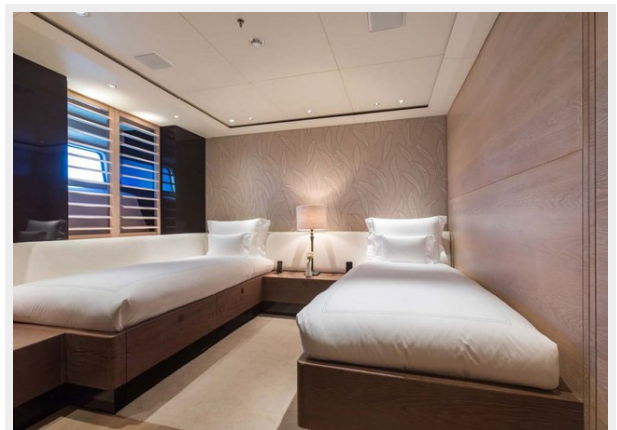
TWIZZLE_Page_28_Image_0001



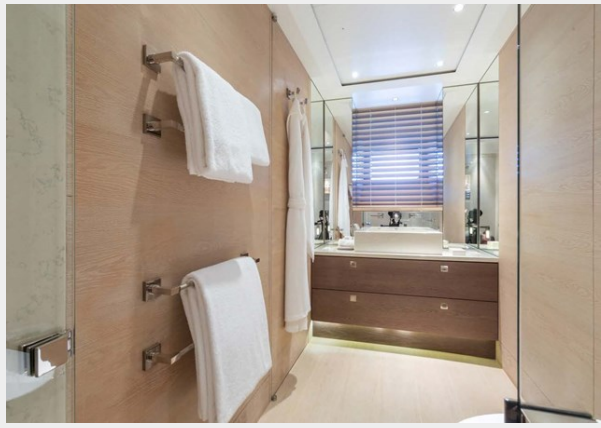
TWIZZLE_Page_30_Image_0001



TWIZZLE_Page_29_Image_0001



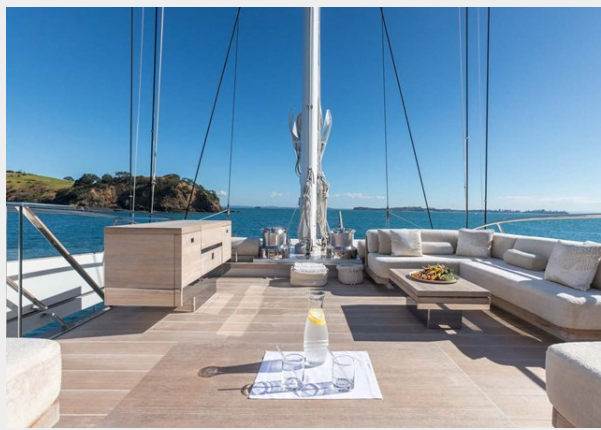
TWIZZLE_Page_31_Image_0001



TWIZZLE_Page_37_Image_0001



TWIZZLE_Page_33_Image_0001



TWIZZLE_Page_34_Image_0001



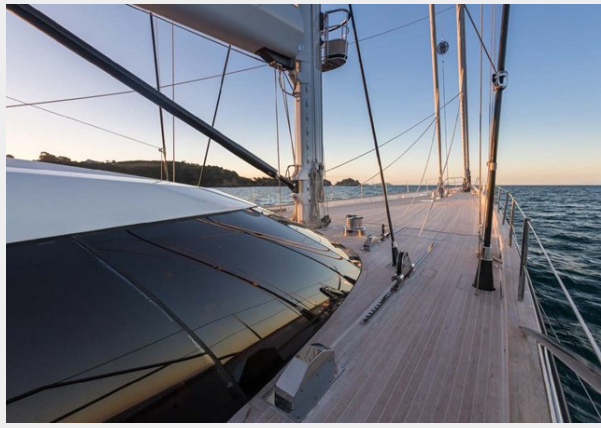
TWIZZLE_Page_09_Image_0001



TWIZZLE_Page_06_Image_0001



TWIZZLE_Page_07_Image_0001



DJI_0802



CONTACTS

Andrey Shestakov, leading yacht broker of the sales department of Shestakov Yacht Sales Inc. Shestakov Yacht Sales Inc., the official representative of the Miami/Fort Lauderdale FL headquarters.

Contact details

Email: andrey@shestakovyachtsales.com

Web: shestakovyachtsales.com/en/

Telephones

USA: +1(954)274-4435

Office hours

Monday – Saturday: **9:00 - 21:00** EDT

Sunday: **closed**

Address



Harbour Towne Marina, 850 NE 3rd St,
STE 213, Dania, FL 33004