

FINAL DRAFT — ALBIN



Builder: ALBIN

Year Built: 2002

Model: Sport Fisherman

Price: PRICE ON APPLICATION

Location: United States

LOA: 29' (8.84mm)

Beam: 10

Max Draft: 3' 2" (0.97mm)

Cruise Speed: 12 Knots Kts. (14 MPH)

Max Speed: 20 Knots Kts. (23 MPH)

Our experienced yacht broker, Andrey Shestakov, will help you choose and buy a yacht that best suits your needs **Final Draft — ALBIN** from **our catalogue**. Presently, at **Shestakov Yacht Sales Inc.**, we have a wide variety of yachts available on **our sale's list**. We also work in close contact with all the big **yacht manufacturers** from all over the world.

If you would like to buy a yacht **Final Draft — ALBIN** or would like help answering any questions concerning purchasing, selling or chartering a yacht, please call **+1(954)274-4435**

TABLE OF CONTENTS

TABLE OF CONTENTS	2
SPECIFICATIONS	5
Overview	5
Basic Information	5
Dimensions	5
Speed, Capacities and Weight	5
Accommodations	5
Hull and Deck Information	6
Engine Information	6
PHOTOS	7
0_2790449_	7
1_2790449_	7
2_2790449_	7
3_2790449_	7
4_2790449_	7
5_2790449_	7
6_2790449_	8
7_2790449_	8
8_2790449_	8
9_2790449_	8
10_2790449_	8
11_2790449_	8
12_2790449_	9
13_2790449_	9
14_2790449_	9
15_2790449_	9
16_2790449_	9
17_2790449_	9

18_2790449_	10
19_2790449_	10
20_2790449_	10
21_2790449_	10
22_2790449_	10
23_2790449_	10
24_2790449_	11
25_2790449_	11
26_2790449_	11
27_2790449_	11
28_2790449_	11
29_2790449_	11
30_2790449_	12
31_2790449_	12
32_2790449_	12
33_2790449_	12
34_2790449_	12
35_2790449_	12
36_2790449_	13
37_2790449_	13
38_2790449_	13
39_2790449_	13
40_2790449_	13
41_2790449_	13
42_2790449_	14
43_2790449_	14
44_2790449_	14
45_2790449_	14
46_2790449_	14

47_2790449_	14
48_2790449_	15
49_2790449_	15
50_2790449_	15
51_2790449_	15
52_2790449_	15
53_2790449_	15
54_2790449_	16
55_2790449_	16
56_2790449_	16
57_2790449_	16
58_2790449_	16
59_2790449_	16
60_2790449_	17
61_2790449_	17
62_2790449_	17
CONTACTS	18
Contact details	18
Telephones	18
Office hours	18
Address	18

SPECIFICATIONS

Overview

The 2002 Albin 28 TE (Tournament Express) has a well-deserved reputation for being able to handle bad weather and sea conditions particularly following seas, as well the comforts of cruiser. This Albin has been loved. Several upgrades: Simrad NSS EVO 3 9" MFD with matching Airmar Chirp transducer, Simard HALO dome radar, C Cup propeller was replaced with a new Nibral 19x17 inch C cup to allow full engine RPM at WOT. SeaDek flooring professionally installed in cabin, cockpit and swim platform. New sunshade over aft deck Stamoid Top material, and it is hinged to flip up to allow room for fishing off the stern. Outrigger mounts on the sides of the cabin and aluminum outrigger poles that are in good condition. She is ready to take you out for fun/fishing!

Basic Information

Category: Sport Fisherman

Model Year: 2002

Year Built: 2002

Country: United States

Dimensions

LOA: 29' (8.84mm)

Beam: 10

Max Draft: 3' 2" (0.97mm)

Speed, Capacities and Weight

Cruise Speed: 12 Knots Kts. (14 MPH) **Max Speed:** 20 Knots Kts. (23 MPH)

Water Capacity: 36 Gallons

Holding Tank: 20 Gal Gallons

Fuel Capacity: 132 Gal Gallons

Accommodations

Total Cabins: 1

Total Heads: 1

Hull and Deck Information

Hull Material: Fiberglass

Engine Information

Engines: 1

Manufacturer: Yanmar

Engine Type: Inboard

Fuel Type: Diesel

PHOTOS

0_2790449_



1_2790449_



2_2790449_



3_2790449_



4_2790449_



5_2790449_



6_2790449_



7_2790449_



8_2790449_



9_2790449_



10_2790449_



11_2790449_



12_2790449_



13_2790449_



14_2790449_



15_2790449_



16_2790449_



17_2790449_



18_2790449_



19_2790449_



20_2790449_



21_2790449_



22_2790449_



23_2790449_



24_2790449_



25_2790449_



26_2790449_



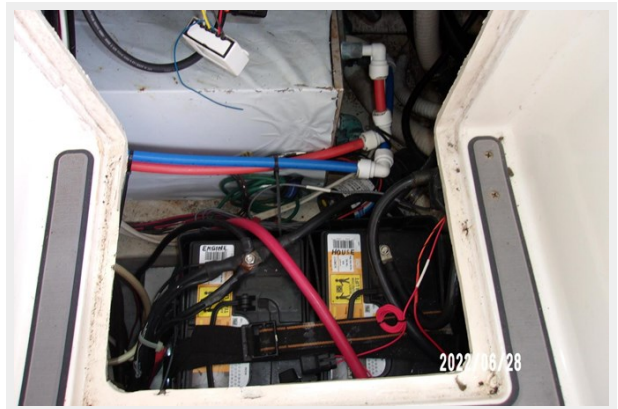
27_2790449_



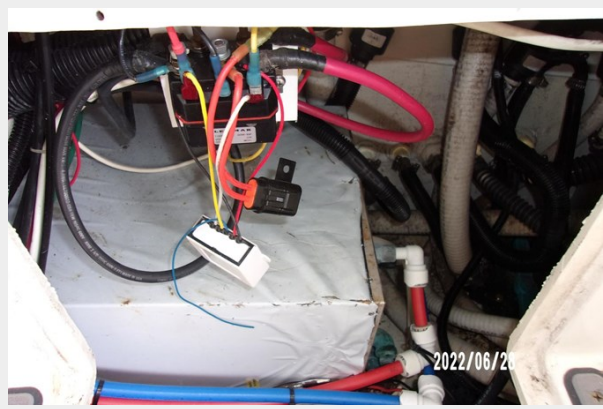
28_2790449_



29_2790449_



30_2790449_



31_2790449_



32_2790449_



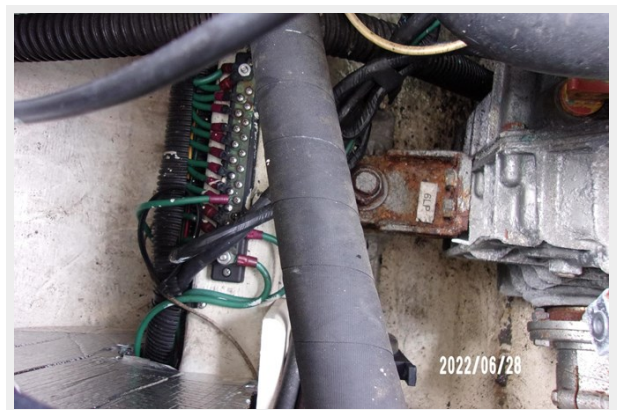
33_2790449_



34_2790449_



35_2790449_



36_2790449_



37_2790449_



38_2790449_



39_2790449_



40_2790449_



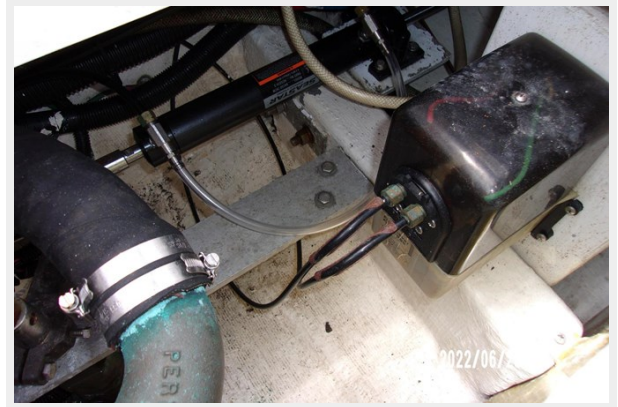
41_2790449_



42_2790449_



43_2790449_



44_2790449_



45_2790449_



46_2790449_



47_2790449_



48_2790449_



49_2790449_



50_2790449_



51_2790449_



52_2790449_



53_2790449_



54_2790449_



55_2790449_



56_2790449_



57_2790449_



58_2790449_



59_2790449_



60_2790449_



61_2790449_



62_2790449_



CONTACTS

Andrey Shestakov, leading yacht broker of the sales department of Shestakov Yacht Sales Inc. Shestakov Yacht Sales Inc., the official representative of the Miami/Fort Lauderdale FL headquarters.

Contact details

Email: **andrey@shestakovyachtsales.com**

Web: shestakovyachtsales.com/en/

Telephones

USA: **+1(954)274-4435**

Office hours

Monday – Saturday: **9:00 - 21:00** EDT

Sunday: **closed**

Address



Harbour Towne Marina, 850 NE 3rd St, STE 213, Dania, FL 33004