

## OCEAN DRIVE — BROWARD



**Builder:** BROWARD

**Year Built:** 1988

**Model:** Tri-Deck

**Price:** PRICE ON APPLICATION

**Location:** United States

**LOA:** 124' (37.8mm)

**Beam:** 22

**Max Draft:** 6' 6" (1.98mm)

**Cruise Speed:** 13 Knots Kts. (15 MPH)

**Max Speed:** 18 Knots Kts. (21 MPH)

Our experienced yacht broker, Andrey Shestakov, will help you choose and buy a yacht that best suits your needs **OCEAN DRIVE — BROWARD** from our catalogue. Presently, at Shestakov Yacht Sales Inc., we have a wide variety of yachts available on our sale's list. We also work in close contact with all the big yacht manufacturers from all over the world.

If you would like to buy a yacht **OCEAN DRIVE — BROWARD** or would like help answering any questions concerning purchasing, selling or chartering a yacht, please call **+1(954)274-4435**

# TABLE OF CONTENTS

TABLE OF CONTENTS	2
SPECIFICATIONS	6
Overview	6
Basic Information	7
Dimensions	7
Speed, Capacities and Weight	7
Accommodations	7
Hull and Deck Information	7
Engine Information	7
PHOTOS	8
OCEAN DRIVE	8
OCEAN DRIVE	8
OCEAN DRIVE	8
OCEAN DRIVE	8
SKY LOUNGE	8
AFT DECK	8
AFT DECK	9
AFT DECK	9
AFT DECK	9
AFT DECK	9
AFT DECK DINING	9
AFT DECK	9
AFT DECK DINING	10
AFT DECK	10
AFT DECK TV	10
BOW	10
JACUZZI ON BOW	10
BOW	10

---

SALON DINING	11
SALON DINING	11
SALON DINING	11
SALON DINING	11
SKY DECK HELM	11
SKY DECK HELM	11
SKY DECK HELM	12
SKY DECK	12
SECOND DECK	12
SECOND DECK	12
SECOND DECK_7	12
SECOND DECK_9	12
SECOND DECK DAVITk_10	13
SECOND DECKk_12	13
SECOND DECK	13
PILOT HOUSE	13
PILOT HOUSE	13
SALON	13
SALON	14
SALON	14
SALON	14
SALON	14
SALON BAR	14
SALON	14
SALON	15
SALON	15
SALON BAR	15
SKY LOUNGE	15
SKY LOUNGE	15

---

SKY LOUNGE	15
SKY LOUNGE	16
SKYLOUNGE	16
FORWARD PORT GUEST SUITE	16
SKY LOUNGE	16
FORWARD PORT GUEST SUITEateroom_2	16
FORWARD PORT GUEST SUITEateroom_3	16
FORWARD STARBOARD GUEST SUITEst_stateroom_4	17
FORWARD PORT GUEST SUITEFORWARD STARBOARD GUEST SUITE	17
FORWARD STARBOARD GUEST SUITEest_stateroom_2	17
FORWARD STARBOARD GUEST SUITEest_stateroom_3	17
STARBOARD GUEST HEADst_stateroom_head_1	17
FORWARD STARBOARD GUEST SUITEst_stateroom_5	17
STARBOARD GUEST HEADest_stateroom_head_3	18
GALLEY	18
GALLEY	18
GALLEY	18
GALLEY	19
GALLEY	19
MASTER SUITE_2	19
MASTER SUITE_3	19
MASTER SUITE4	19
MASTER SUITEm_5	19
MASTER SUITE_6	20
MASTER SUITE_8	20
MASTER SUITEead_1	20
MASTER SUITE HEADm_head_4	20
CONTACTS	21
Contact details	21

---

Telephones	21
Office hours	21
Address	21

---

# SPECIFICATIONS

---

## Overview

---

This is the iconic Tri-Deck Motor Yacht "OCEAN DRIVE" one of the largest Broward Yachts available. She has been completely re-fit 2022 with over \$1,000,000 in upgrades including:

- All Engine Services
- Generator Services
- New Sea Chest and all new SeaCocks
- Salon - All new including furniture and new Grand Piano
- Sky Lounge - All New
- Jacuzzi installed on bow
- New Hull Paint - Blue
- Newly added 5th Stateroom (Main Deck)
- New Flooring in all Guest Suites and Master - Ceramic
- New Bar in Salon
- All Teak recently new
- All Electric upgraded
- All Air Conditioning Upgraded
- New tenders
- Crew Quarters Upgraded including flooring
- All new Headliners Throughout
- All new LED Lighting
- New Sound System
- All new TV's
- All Pumps either replaced or reconditioned
- New Automatic Blinds in Salon
- 85" TV in Sky Lounge
- WiFi with 7 Access Points
- Upgraded Navigation Electronics
- All new Underwater Lights
- New "Rub Rail" Lighting
- All new Exterior Lights
- MORE

---

## Basic Information

---

**Category:** Tri-Deck

**Sub Category:** Tri-Deck

**Model Year:** 1988

**Year Built:** 1988

**Refit Type:** Complete exterior and Interior

**Country:** United States

---

## Dimensions

---

**LOA:** 124' (37.8mm)

**Beam:** 22

**Max Draft:** 6' 6" (1.98mm)

---

## Speed, Capacities and Weight

---

**Cruise Speed:** 13 Knots Kts. (15 MPH)

**Max Speed:** 18 Knots Kts. (21 MPH)

**Gross Tonnage:** 211 Pounds

**Water Capacity:** 1200 Gallons

**Fuel Capacity:** 8000 Gal Gallons

---

## Accommodations

---

**Total Cabins:** 5

**Sleeps:** 10

**Total Heads:** 5

---

## Hull and Deck Information

---

**Hull Material:** Aluminum

**Deck Material:** Aluminum

---

## Engine Information

---

**Engines:** 1

**Manufacturer:** Caterpillar

# PHOTOS

OCEAN DRIVE



OCEAN DRIVE



OCEAN DRIVE



OCEAN DRIVE



SKY LOUNGE



AFT DECK





**AFT DECK**



**AFT DECK**



**AFT DECK**



**AFT DECK**



**AFT DECK DINING**



**AFT DECK**



**AFT DECK DINING**



**AFT DECK**



**AFT DECK TV**



**BOW**



**JACUZZI ON BOW**



**BOW**



**SALON DINING**



**SALON DINING**



**SALON DINING**



**SALON DINING**



**SKY DECK HELM**



**SKY DECK HELM**



**SKY DECK HELM**



**SKY DECK**



**SECOND DECK**



**SECOND DECK**



**SECOND DECK\_7**



**SECOND DECK\_9**



**SECOND DECK DAVITk\_10**



**SECOND DECKk\_12**



**SECOND DECK**



**PILOT HOUSE**



**PILOT HOUSE**



**SALON**



**SALON**



**SALON**



**SALON**



**SALON**



**SALON BAR**



**SALON**



**SALON**



**SALON**



**SALON BAR**



**SKY LOUNGE**



**SKY LOUNGE**



**SKY LOUNGE**



**SKY LOUNGE**



**SKYLOUNGE**



**FORWARD PORT GUEST SUITE**

**SKY LOUNGE**



**FORWARD PORT GUEST SUITEateroom\_2 FORWARD PORT GUEST SUITEateroom\_3**





**FORWARD STARBOARD GUEST SUITE**  
**Est\_stateroom\_4**



**FORWARD PORT GUEST SUITE**  
**FORWARD STARBOARD GUEST SUITE**



**FORWARD STARBOARD GUEST SUITE**  
**Est\_stateroom\_2**



**FORWARD STARBOARD GUEST SUITE**  
**Est\_stateroom\_3**



**FORWARD STARBOARD GUEST SUITE**  
**Est\_stateroom\_5**



**STARBOARD GUEST HEAD**  
**st\_stateroom\_head\_1**



**STARBOARD GUEST  
HEADest\_stateroom\_head\_3**



**GALLEY**



**GALLEY**

**GALLEY**



**GALLEY**



**GALLEY**



**MASTER SUITE\_2**



**MASTER SUITE\_3**



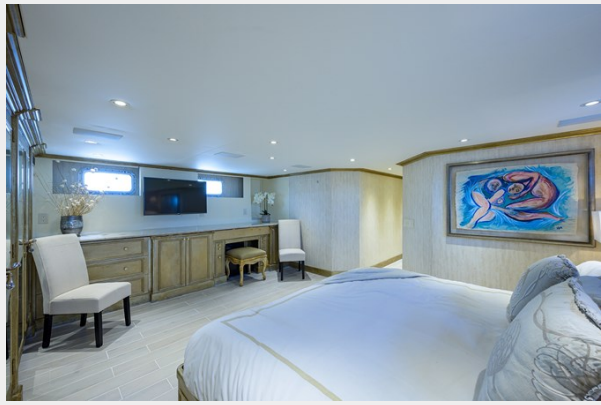
**MASTER SUITE4**



**MASTER SUITEm\_5**



**MASTER SUITE\_6**



**MASTER SUITE\_8**



**MASTER SUITEead\_1**



**MASTER SUITE HEADm\_head\_4**



---

# CONTACTS

---

Andrey Shestakov, leading yacht broker of the sales department of Shestakov Yacht Sales Inc. Shestakov Yacht Sales Inc., the official representative of the Miami/Fort Lauderdale FL headquarters.

---

## Contact details

---

Email: [andrey@shestakovyachtsales.com](mailto:andrey@shestakovyachtsales.com)

Web: [shestakovyachtsales.com/en/](http://shestakovyachtsales.com/en/)

---

## Telephones

---

USA: +1(954)274-4435

---

## Office hours

---

Monday – Saturday: **9:00 - 21:00** EDT

Sunday: **closed**

---

## Address

---



Harbour Towne Marina, 850 NE 3rd St,  
STE 213, Dania, FL 33004