

## TRAILBLAZER — MARLOW



**Builder:** MARLOW

**Year Built:** 2005

**Model:** Motor Yacht

**Price:** PRICE ON APPLICATION

**Location:** United States

**LOA:** 82' 1" (25.02mm)

**Beam:** 20.33

**Max Draft:** 4' 10" (1.47mm)

**Cruise Speed:** 21 Knots Kts. (24 MPH)

**Max Speed:** 26 Knots Kts. (30 MPH)

Our experienced yacht broker, Andrey Shestakov, will help you choose and buy a yacht that best suits your needs **TRAILBLAZER — MARLOW** from our catalogue. Presently, at **Shestakov Yacht Sales Inc.**, we have a wide variety of yachts available on our sale's list. We also work in close contact with all the big yacht manufacturers from all over the world.

If you would like to buy a yacht **TRAILBLAZER — MARLOW** or would like help answering any questions concerning purchasing, selling or chartering a yacht, please call **+1(954)274-4435**

---

# TABLE OF CONTENTS

---

|                              |    |
|------------------------------|----|
| TABLE OF CONTENTS            | 2  |
| SPECIFICATIONS               | 3  |
| Overview                     | 3  |
| Basic Information            | 3  |
| Dimensions                   | 3  |
| Speed, Capacities and Weight | 3  |
| Accommodations               | 3  |
| Hull and Deck Information    | 3  |
| Engine Information           | 4  |
| PHOTOS                       | 5  |
| CONTACTS                     | 15 |
| Contact details              | 15 |
| Telephones                   | 15 |
| Office hours                 | 15 |
| Address                      | 15 |

---

# SPECIFICATIONS

---

## Overview

---

Motor Yacht TRAILBLAZER is an 82' (25.25m) yacht for sale, built and launched by yacht builder Marlow Yachts and delivered in 2005. This vessel sleeps up to 7 guests in 4 staterooms and has accommodations for 2 crew in 1 cabin.

## Basic Information

---

**Category:** Motor Yacht

**Model Year:** 2005

**Year Built:** 2005

**Country:** United States

## Dimensions

---

**LOA:** 82' 1" (25.02mm)

**Beam:** 20.33

**Max Draft:** 4' 10" (1.47mm)

## Speed, Capacities and Weight

---

**Cruise Speed:** 21 Knots Kts. (24 MPH) **Max Speed:** 26 Knots Kts. (30 MPH)

**Water Capacity:** 500 Gallons

**Fuel Capacity:** 3000 Gal Gallons

## Accommodations

---

**Total Cabins:** 4

**Sleeps:** 7

**Crew Cabin:** 2

## Hull and Deck Information

---

**Hull Material:** Fiberglass

**Hull Configuration:** Semi-Displacement

---

## Engine Information

---

**Engines:** 2

**Manufacturer:** Caterpillar

**Engine Type:** Inboard

**Fuel Type:** Diesel

# PHOTOS







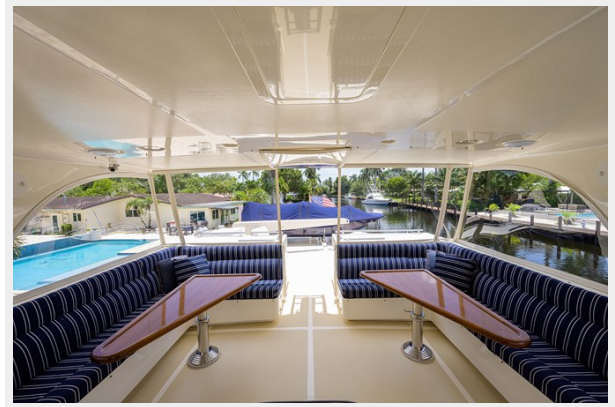




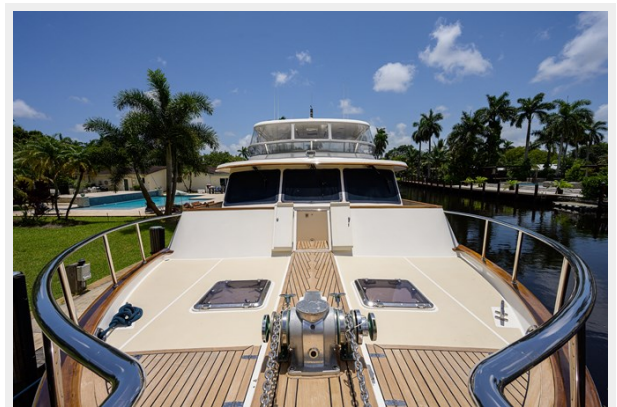








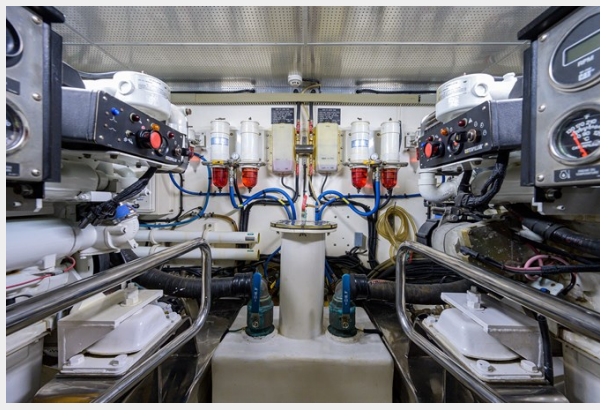
















# CONTACTS

---

Andrey Shestakov, leading yacht broker of the sales department of Shestakov Yacht Sales Inc. Shestakov Yacht Sales Inc., the official representative of the Miami/Fort Lauderdale FL headquarters.

## Contact details

---

Email: **andrey@shestakovyachtsales.com**

Web: [shestakovyachtsales.com/en/](https://shestakovyachtsales.com/en/)

## Telephones

---

USA: **+1(954)274-4435**

## Office hours

---

Monday – Saturday: **9:00 - 21:00** EDT

Sunday: **closed**

## Address

---



Harbour Towne Marina, 850 NE 3rd St, STE 213, Dania, FL 33004