

## FIELD TRIP — CRUISERS YACHTS



**Builder:** CRUISERS YACHTS

**Year Built:** 2003

**Model:** Cruising Yacht

**Price:** PRICE ON APPLICATION

**Location:** United States

**LOA:** 37' (11.28mm)

**Beam:** 13

**Max Draft:** 3' (0.91mm)

**Cruise Speed:** 20 Knots Kts. (23 MPH)

**Max Speed:** 28 Knots Kts. (32 MPH)

Our experienced yacht broker, Andrey Shestakov, will help you choose and buy a yacht that best suits your needs **Field Trip — CRUISERS YACHTS** from our catalogue. Presently, at Shestakov Yacht Sales Inc., we have a wide variety of yachts available on our sale's list. We also work in close contact with all the big yacht manufacturers from all over the world.

If you would like to buy a yacht **Field Trip — CRUISERS YACHTS** or would like help answering any questions concerning purchasing, selling or chartering a yacht, please call **+1(954)274-4435**

# TABLE OF CONTENTS

---

TABLE OF CONTENTS	2
SPECIFICATIONS	5
Overview	5
Basic Information	5
Dimensions	5
Speed, Capacities and Weight	6
Accommodations	6
Hull and Deck Information	6
Engine Information	6
PHOTOS	7
1_2790460_port_bow_profile	7
2_2790460_port_profile	7
3_2790460_port_stern_profile	7
4_2790460_stern_profile	7
5_2790460_starboard_stern_profile	7
6_2790460_starboard_profile	7
7_2790460_starboard_bow_profile	7
8_2790460_aft_deck_forward	7
9_2790460_aft_deck_port	8
10_2790460_aft_deck_wet_bar	8
11_2790460_aft_deck_starboard	8
12_2790460_aft_deck_aft	8
13_2790460_helm_forward	8
14_2790460_helm	8
15_2790460_helm_fore_deck_access	8
16_2790460_helm_port	8
17_2790460_helm_starboard	9
18_2790460_helm_aft	9

---

19_2790460_aft_deck_main_cabin_access	9
20_2790460_main_cabin	9
21_2790460_main_cabin_forward	9
22_2790460_main_cabin_port	9
23_2790460_main_cabin_galley	10
24_2790460_main_cabin_starboard	10
25_2790460_main_cabin_aft	10
26_2790460_stateroom_forward	10
27_2790460_stateroom_port	10
28_2790460_stateroom_starboard	10
29_2790460_head_vanity_and_toilet	11
30_2790460_head_toilet_and_shower	11
31_2790460_engine_room_access	11
32_2790460_main_engine_port	11
33_2790460_main_engine_starboard	11
34_2790460_main_engine_fuel_filters	11
36_2790460_fire_suppression	12
35_2790460_dripleless_shaft_seal	12
37_2790460_oil_changer	12
38_2790460_generator	12
39_2790460_battery_charger	12
40_2790460_house_and_start_batteries	12
42_2790460_electrical_panel	13
41_2790460_generator_battery	13
44_2790460_outboard	13
43_2790460_tender	13
45_2790460_davit_and_cradle	13
46_2790460_swim_platform	13
47_2790460_fore_deck	14

---

---

48_2790460_bow_pulpit	14
49_2790460_windlass	14
50_2790460_port_walkway	14
51_2790460_starboard_walkway	14
52_2790460_primary_anchor	14
53_2790460_auxiliary_anchor	15
<b>CONTACTS</b>	<b>16</b>
Contact details	16
Telephones	16
Office hours	16
Address	16

---

# SPECIFICATIONS

---

## Overview

---

Field Trip is a nicely maintained Cruisers Yachts 3772 Express motor yacht that features a sporty express exterior with plenty of aft deck space for entertaining or relaxing and a well-thought-out interior layout, effectively combining above and below deck comfort with a performance-driven profile. This 3772 features an open plan interior layout with a huge salon for a boat its size that includes a sleeper sofa, a crescent shaped dinette provide seating for six to eight adults, a full galley with lots of cabinet and storage space, real cherry wood cabinetry, a full size head featuring a separate shower stall and real ceramic floor tile and a very roomy stateroom forward. This boat will soon be a great loop veteran and is ready to go around again or continue cruising to other destinations.

Recent upgrades/improvements include but are not limited to:

New fresh water pump (2022)

New Batteries (2021)

Bottom paint only has 11 months of in-water time

New steering ram (2021)

---

## Basic Information

---

**Category:** Cruising Yacht

**Sub Category:** Express

**Model Year:** 2003

**Year Built:** 2003

**Country:** United States

---

## Dimensions

---

**LOA:** 37' (11.28mm)

**Beam:** 13

**Max Draft:** 3' (0.91mm)

---

## Speed, Capacities and Weight

---

**Cruise Speed:** 20 Knots Kts. (23 MPH)

**Max Speed:** 28 Knots Kts. (32 MPH)

**Water Capacity:** 70 Gallons

**Holding Tank:** 55 Gal Gallons

**Fuel Capacity:** 300 Gal Gallons

---

## Accommodations

---

**Total Cabins:** 1

**Total Heads:** 1

---

## Hull and Deck Information

---

**Hull Material:** Fiberglass

---

## Engine Information

---

**Engines:** 2

**Manufacturer:** Yanmar

**Engine Type:** Inboard

**Fuel Type:** Diesel

# PHOTOS

1\_2790460\_port\_bow\_profile



2\_2790460\_port\_profile



3\_2790460\_port\_stern\_profile



4\_2790460\_stern\_profile



5\_2790460\_starboard\_stern\_profile



6\_2790460\_starboard\_profile



7\_2790460\_starboard\_bow\_profile



8\_2790460\_aft\_deck\_forward



9\_2790460\_aft\_deck\_port



10\_2790460\_aft\_deck\_wet\_bar



11\_2790460\_aft\_deck\_starboard



12\_2790460\_aft\_deck\_aft



13\_2790460\_helm\_forward



14\_2790460\_helm



15\_2790460\_helm\_fore\_deck\_access



16\_2790460\_helm\_port





17\_2790460\_helm\_starboard



18\_2790460\_helm\_aft



19\_2790460\_aft\_deck\_main\_cabin\_access



20\_2790460\_main\_cabin



21\_2790460\_main\_cabin\_forward



22\_2790460\_main\_cabin\_port



23\_2790460\_main\_cabin\_galley



24\_2790460\_main\_cabin\_starboard



25\_2790460\_main\_cabin\_aft



26\_2790460\_stateroom\_forward



27\_2790460\_stateroom\_port



28\_2790460\_stateroom\_starboard



29\_2790460\_head\_vanity\_and\_toilet



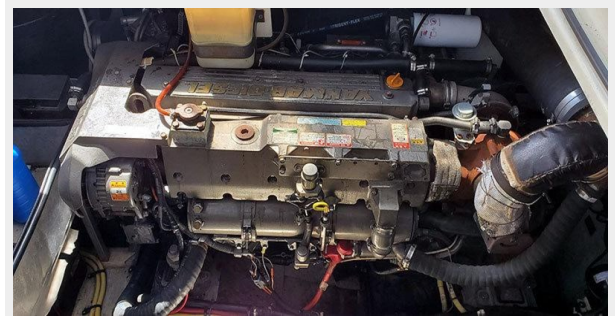
30\_2790460\_head\_toilet\_and\_shower



31\_2790460\_engine\_room\_access



32\_2790460\_main\_engine\_port



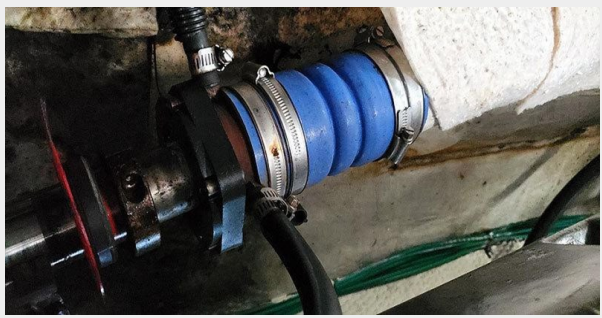
33\_2790460\_main\_engine\_starboard



34\_2790460\_main\_engine\_fuel\_filters



35\_2790460\_dripleless\_shaft\_seal



36\_2790460\_fire\_suppression



37\_2790460\_oil\_changer



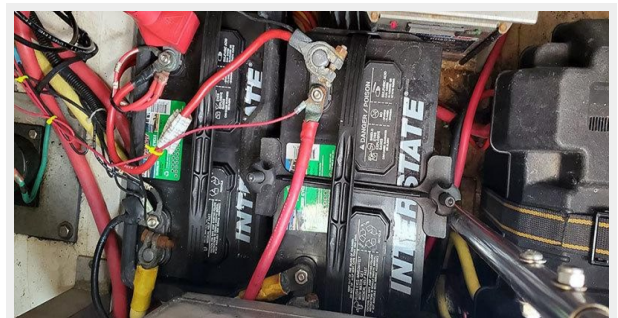
38\_2790460\_generator



39\_2790460\_battery\_charger



40\_2790460\_house\_and\_start\_batteries



41\_2790460\_generator\_battery



42\_2790460\_electrical\_panel



43\_2790460\_tender



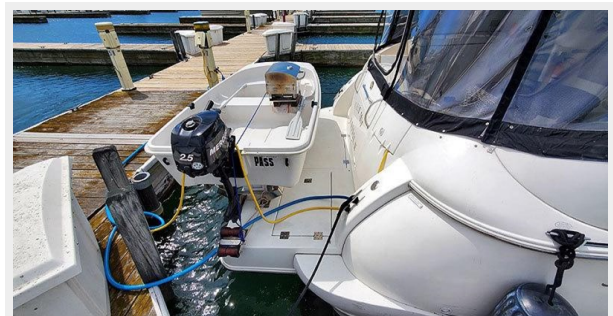
44\_2790460\_outboard



45\_2790460\_davit\_and\_cradle



46\_2790460\_swim\_platform



47\_2790460\_fore\_deck



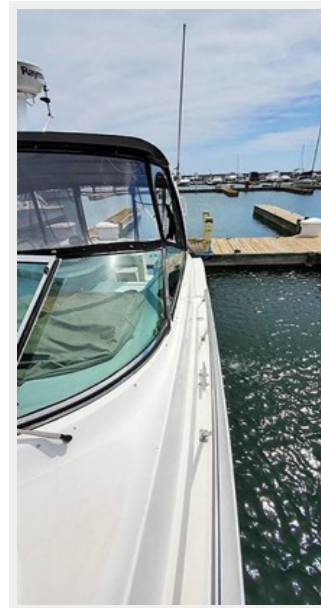
48\_2790460\_bow\_pulpit



49\_2790460\_windlass



50\_2790460\_port\_walkway



51\_2790460\_starboard\_walkway



52\_2790460\_primary\_anchor



**53\_2790460\_auxiliary\_anchor**



# CONTACTS

---

Andrey Shestakov, leading yacht broker of the sales department of Shestakov Yacht Sales Inc. Shestakov Yacht Sales Inc., the official representative of the Miami/Fort Lauderdale FL headquarters.

## Contact details

---

Email: [andrey@shestakovyachtsales.com](mailto:andrey@shestakovyachtsales.com)

Web: [shestakovyachtsales.com/en/](http://shestakovyachtsales.com/en/)

## Telephones

---

USA: +1(954)274-4435

## Office hours

---

Monday – Saturday: **9:00 - 21:00** EDT

Sunday: **closed**

## Address

---



Harbour Towne Marina, 850 NE 3rd St,  
STE 213, Dania, FL 33004