

FIDDLERS DREAM — MARLOW



Builder: MARLOW

Year Built: 2010

Model: Motor Yacht

Price: PRICE ON APPLICATION

Location: Malta

LOA: 77' 8" (23.67m)

Beam: 20.16

Max Draft: 4' 10" (1.47m)

Cruise Speed: 17 Knots Kts. (20 MPH)

Max Speed: 20 Knots Kts. (23 MPH)

Our experienced yacht broker, Andrey Shestakov, will help you choose and buy a yacht that best suits your needs **FIDDLERS DREAM — MARLOW** from our catalogue. Presently, at Shestakov Yacht Sales Inc., we have a wide variety of yachts available on our sale's list. We also work in close contact with all the big yacht manufacturers from all over the world.

If you would like to buy a yacht **FIDDLERS DREAM — MARLOW** or would like help answering any questions concerning purchasing, selling or chartering a yacht, please call **+1(954)274-4435**

TABLE OF CONTENTS

TABLE OF CONTENTS	2
SPECIFICATIONS	5
Overview	5
Basic Information	5
Dimensions	5
Speed, Capacities and Weight	5
Accommodations	6
Hull and Deck Information	6
Engine Information	6
PHOTOS	7
Stairs from Galley to Command Bridge	7
Command Bridge Aft Seating	7
Aft Cockpit	7
Cockpit Table	7
Port Bow Seat	7
Dual Windlasses	7
Elegant Salon Looking Aft	8
Salon Port Side	8
Salon Looking Forward	8
Salon Table	8
Salon Looking Forward 2	8
Wine Cooler in Salon	8
Stairs from Galley to Command Bridge	9
Pilothouse Settee Forward	9
Pilothouse Table Forward to Galley	9
Pilothouse Beautiful View	9
Galley Looking Stbd.	9
Cooktop and Oven	9

Galley Looking Aft	10
Galley and Pilothouse Seating	10
Command Bridge Electronics	10
King Master	10
Master Looking Aft	10
Master Settee and Desk	10
Master	11
Master Looking Forward	11
Master Large Shower	11
Master Head and Sink	11
Master Twin Sinks	11
Master Head	11
Master Closet	12
Bottom of Stairs, Entrance to Master	12
Stairs to Lower Deck	12
VIP Bed	12
VIP 2	12
VIP Head	12
Port Guest	13
Port Guest Head	13
Crew Head	13
4th Bunks Stbd. Side	13
Crew Bunks	13
Crew Bunks	13
Crew Laundry	14
Transom Stbd. Storage	14
Transom Power Converter	14
Engine Room C18's	14
Port Engine	14

Stbd. Engine	14
Generator 1	15
Generator 2	15
Sea Keeper 1	15
Sea Keeper 2	15
Command Bridge Electronics	15
Generator Hours 1	15
Generator Hours 2	16
CONTACTS	17
Contact details	17
Telephones	17
Office hours	17
Address	17

SPECIFICATIONS

Overview

Fiddlers Dream was built for her English Owner that cruised Florida and the Bahamas for two years, then she was shipped to Europe and was based in Cannes and now resides in Malta. She has always kept Her MCA class and is ready for worldwide cruising with her ASEA 60 -50 Hz transformer. Built to Germanischer Lloyd Specification and certification, the Yacht has always been professionally maintained. The bottom has a Copper coat. Much of her interior cabinetry was custom built by Design Unlimited in the UK; and she is possibly the most elegant yacht available under 120 feet. High end Crockery, crystal glassware and solid silver cutlery are all included. The view from the raised pilothouse is excellent and you can see outside in all directions. The master stateroom is below the Pilothouse in the center of the yacht and is full beam. The 1,015HP CAT's will let you cruise efficiently at 8 knots while using about 1 Gallon Per nautical Mile and she will top out at almost 19 knots. She has a high cruise of 16-17 knots depending on load. Her 3,000 gallons of fuel will allow you to go 3,000+ miles at trawler speeds. There are 4 staterooms for owners and guests with three full heads. Fiddlers Dream was built with full crewquarters aft for a captain and mate that can be accessed without entering the salon.

Basic Information

Category: Motor Yacht

Model Year: 2010

Year Built: 2010

Country: Malta

Dimensions

LOA: 77' 8" (23.67mm)

LWL: 66' (20.12mm)

Beam: 20.16

Max Draft: 4' 10" (1.47mm)

Speed, Capacities and Weight

Cruise Speed: 17 Knots Kts. (20 MPH)

Max Speed: 20 Knots Kts. (23 MPH)

Water Capacity: 500 Gallons

Holding Tank: 175 Gal Gallons

Fuel Capacity: 3000 Gal Gallons

Accommodations

Total Cabins: 4

Hull and Deck Information

Hull Material: Composite

Exterior Designer: Marlow Design Team

Interior Designer: Marlow Design Team

Engine Information

Engines: 2

Manufacturer: Caterpillar

PHOTOS

Stairs from Galley to Command Bridge



Command Bridge Aft Seating



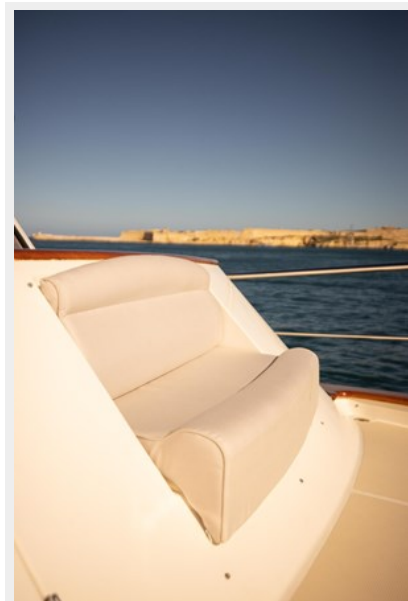
Aft Cockpit



Cockpit Table



Port Bow Seat



Dual Windlasses



Elegant Salon Looking Aft



Salon Port Side



Salon Looking Forward



Salon Table



Salon Looking Forward 2



Wine Cooler in Salon



Stairs from Galley to Command Bridge



Pilothouse Settee Forward



Pilothouse Table Forward to Galley



Pilothouse Beautiful View



Galley Looking Stbd.



Cooktop and Oven



Galley Looking Aft



Galley and Pilothouse Seating



Command Bridge Electronics



King Master



Master Looking Aft



Master Settee and Desk



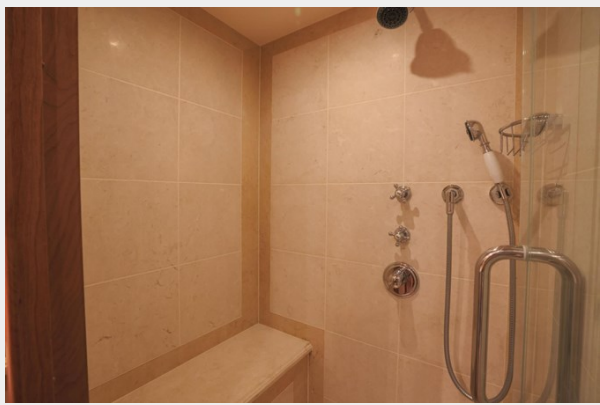
Master



Master Looking Forward



Master Large Shower



Master Head and Sink



Master Twin Sinks



Master Head



Master Closet



Bottom of Stairs, Entrance to Master



Stairs to Lower Deck



VIP Bed



VIP 2



VIP Head



Port Guest



Port Guest Head



Crew Head



4th Bunks Stbd. Side



Crew Bunks



Crew Bunks



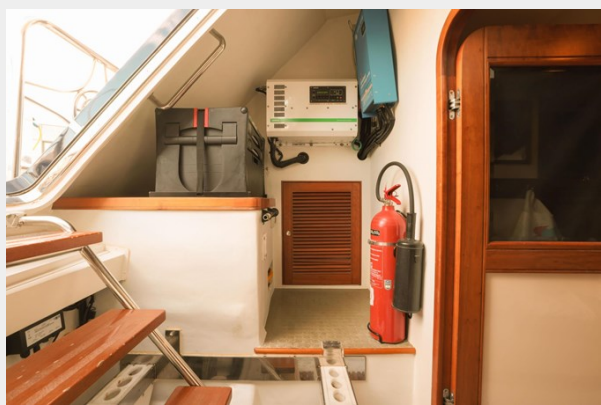
Crew Laundry



Transom Stbd. Storage



Transom Power Converter



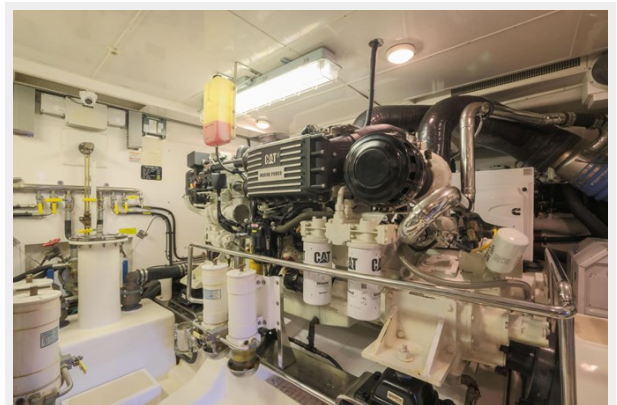
Engine Room C18's



Port Engine



Stbd. Engine



Generator 1



Generator 2



Sea Keeper 1



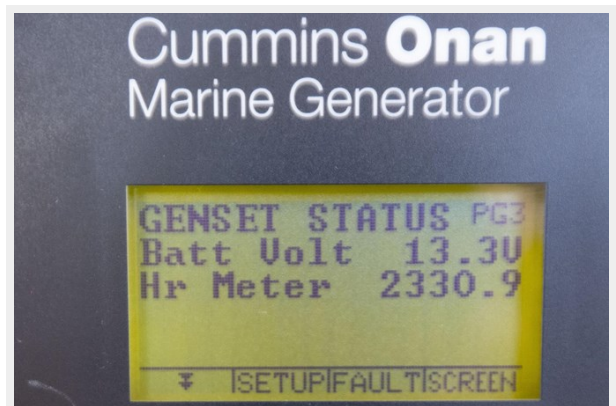
Sea Keeper 2



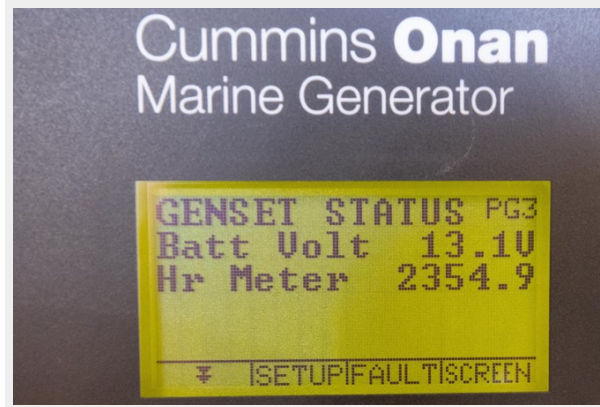
Command Bridge Electronics



Generator Hours 1



Generator Hours 2



CONTACTS

Andrey Shestakov, leading yacht broker of the sales department of Shestakov Yacht Sales Inc. Shestakov Yacht Sales Inc., the official representative of the Miami/Fort Lauderdale FL headquarters.

Contact details

Email: andrey@shestakovyachtsales.com

Web: shestakovyachtsales.com/en/

Telephones

USA: +1(954)274-4435

Office hours

Monday – Saturday: **9:00 - 21:00** EDT

Sunday: **closed**

Address



Harbour Towne Marina, 850 NE 3rd St,
STE 213, Dania, FL 33004