

## MIDNIGHT RIDER — CARVER



**Builder:** CARVER

**Year Built:** 1994

**Model:** Aft Cabin

**Price:** PRICE ON APPLICATION

**Location:** United States

**LOA:** 39' (11.89mm)

**Beam:** 13.25

**Max Draft:** 3' 3" (0.99mm)

Our experienced yacht broker, Andrey Shestakov, will help you choose and buy a yacht that best suits your needs **Midnight Rider — CARVER** from our catalogue. Presently, at Shestakov Yacht Sales Inc., we have a wide variety of yachts available on our sale's list. We also work in close contact with all the big yacht manufacturers from all over the world.

If you would like to buy a yacht **Midnight Rider — CARVER** or would like help answering any questions concerning purchasing, selling or chartering a yacht, please call **+1(954)274-4435**

# TABLE OF CONTENTS

TABLE OF CONTENTS	2
SPECIFICATIONS	4
Overview	4
Basic Information	4
Dimensions	4
Speed, Capacities and Weight	4
Accommodations	4
Hull and Deck Information	4
Engine Information	4
PHOTOS	5
1_2790403_1_midnight_rider_1994_carver_390_cpmy_starboard_profile_pic	5
0_2790403_01_midnight_rider_1994_carver_390_on_the_water	5
2_2790403_2_midnight_rider_1994_carver_390_aft_pic	5
3_2790403_3_midnight_rider_1994_carver_390_por_profile	5
4_2790403_4_midnight_rider_1994_carver_390_aft_deck	5
5_2790403_5_midnight_rider_1994_carver_390_starboard_side_deck	5
6_2790403_6_midnight_rider_1994_carver_390_port_sidedeck	5
7_2790403_7_midnight_rider_1994_carver_390_foredeck_view	5
8_2790403_71_midnight_rider_1994_carver_390_sun_pads	6
9_2790403_8_midnight_rider_1994_carver_390_helm	6
10_2790403_9_midnight_rider_1994_carver_390_electronics	6
11_2790403_10_midnight_rider_1994_carver_390_vhf	6
12_2790403_11_midnight_rider_1994_carver_390_aft_deck_wet_bar	6
13_2790403_12_midnight_rider_1994_carver_390_companionway	6
14_2790403_13_midnight_rider_1994_carver_390_salon	6
15_2790403_14_midnight_rider_1994_carver_390_dinette	6
16_2790403_15_midnight_rider_1994_carver_390_galley_1	7
17_2790403_16_midnight_rider_1994_carver_390_galley_2	7

---

18_2790403_17_midnight_rider_1994_carver_390_galley_3	7
19_2790403_18_midnight_rider_1994_carver_390_range	7
20_2790403_19_midnight_rider_1994_carver_390_forward_cabin	7
21_2790403_20_midnight_rider_1994_carver_390_forward_head	7
22_2790403_21_midnight_rider_1994_carver_390_aft_cabin	7
23_2790403_22_midnight_rider_1994_carver_390_aft_cabin	7
24_2790403_23_midnight_rider_1994_carver_390_aft_head	8
25_2790403_24_midnight_rider_1994_carver_390_engine_room	8
26_2790403_25_midnight_rider_1994_carver_390_engine_room	8
27_2790403_26_midnight_rider_1994_carver_390_engine_room	8
28_2790403_27_midnight_rider_1994_carver_390_engine_room	8
29_2790403_28_midnight_rider_1994_carver_390_engine_room	8
30_2790403_29_midnight_rider_1994_carver_390_panel	8
CONTACTS	9
Contact details	9
Telephones	9
Office hours	9
Address	9

---

## SPECIFICATIONS

---

### Overview

---

The carver 390 CPMY is the cockpit version of the 355 motor yacht. This allows for easy boarding, direct access to the aft cabin, a more sleek look, and even adds a knot or two to the speed. For an under 40' vessel she is surprisingly roomy with two cabins and heads, full galley, dinette, and lots of storage. The Flybridge offers plenty of guest seating and with its full bridge enclosure you can enjoy her year round.

She is powered by a reliable pair of Volvo Penta 6 cylinder Diesel engines and has an 8kw generator to keep you comfortable while underway or at anchor. Her size and engine package make her a good option for someone looking to experience "America's Great Loop".

### Basic Information

---

**Category:** Aft Cabin

**Sub Category:** Aft Cabin

**Model Year:** 1994

**Year Built:** 1994

**Country:** United States

### Dimensions

---

**LOA:** 39' (11.89mm)

**LWL:** 38' 9" (11.81mm)

**Beam:** 13.25

**Max Draft:** 3' 3" (0.99mm)

### Speed, Capacities and Weight

---

**Water Capacity:** 70 Gallons

**Holding Tank:** 36 Gal Gallons

**Fuel Capacity:** 318 Gal Gallons

### Accommodations

---

**Total Cabins:** 2

**Sleeps:** 4

**Total Heads:** 2

### Hull and Deck Information

---

**Hull Material:** Fiberglass

### Engine Information

---

**Engines:** 2

**Manufacturer:** Volvo Penta

**Engine Type:** Inboard

**Fuel Type:** Diesel

# PHOTOS

1\_2790403\_1\_midnight\_rider\_1994\_carver\_390\_cpmy\_starboard\_profile\_pic

0\_2790403\_01\_midnight\_rider\_1994\_carver\_390\_on\_the\_water



2\_2790403\_2\_midnight\_rider\_1994\_carver\_390\_aft\_pic



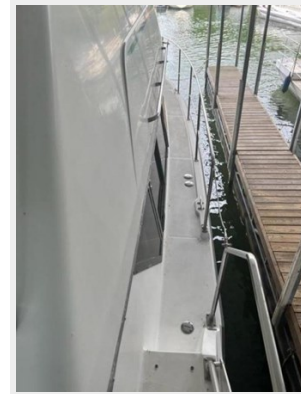
3\_2790403\_3\_midnight\_rider\_1994\_carver\_390\_por\_profile



4\_2790403\_4\_midnight\_rider\_1994\_carver\_390\_aft\_deck



5\_2790403\_5\_midnight\_rider\_1994\_carver\_390\_starboard\_side\_deck



6\_2790403\_6\_midnight\_rider\_1994\_carver\_390\_port\_sidedeck



7\_2790403\_7\_midnight\_rider\_1994\_carver\_390\_foredeck\_view



8\_2790403\_71\_midnight\_rider\_1994\_carver\_390\_sun\_pads



9\_2790403\_8\_midnight\_rider\_1994\_carver\_390\_helm



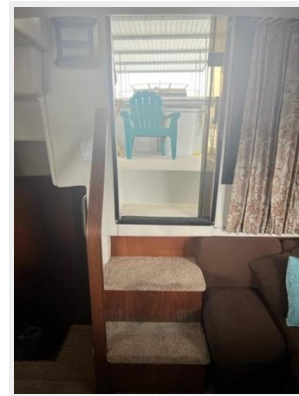
10\_2790403\_9\_midnight\_rider\_1994\_carver\_390\_electronics



11\_2790403\_10\_midnight\_rider\_1994\_carver\_390\_vhf



12\_2790403\_11\_midnight\_rider\_1994\_carver\_390\_aft\_deck\_wet\_bar 13\_2790403\_12\_midnight\_rider\_1994\_carver\_390\_companionway



14\_2790403\_13\_midnight\_rider\_1994\_carver\_390\_salon



15\_2790403\_14\_midnight\_rider\_1994\_carver\_390\_dinette



16\_2790403\_15\_midnight\_rider\_1994\_carver\_390\_galley\_1



17\_2790403\_16\_midnight\_rider\_1994\_carver\_390\_galley\_2



18\_2790403\_17\_midnight\_rider\_1994\_carver\_390\_galley\_3



19\_2790403\_18\_midnight\_rider\_1994\_carver\_390\_range



20\_2790403\_19\_midnight\_rider\_1994\_carver\_390\_forward\_cabin



21\_2790403\_20\_midnight\_rider\_1994\_carver\_390\_forward\_head



22\_2790403\_21\_midnight\_rider\_1994\_carver\_390\_aft\_cabin



23\_2790403\_22\_midnight\_rider\_1994\_carver\_390\_aft\_cabin



24\_2790403\_23\_midnight\_rider\_1994\_carver\_390\_aft\_head



25\_2790403\_24\_midnight\_rider\_1994\_carver\_390\_engine\_room



26\_2790403\_25\_midnight\_rider\_1994\_carver\_390\_engine\_room



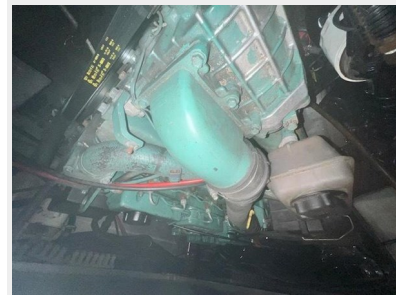
27\_2790403\_26\_midnight\_rider\_1994\_carver\_390\_engine\_room



28\_2790403\_27\_midnight\_rider\_1994\_carver\_390\_engine\_room



29\_2790403\_28\_midnight\_rider\_1994\_carver\_390\_engine\_room



30\_2790403\_29\_midnight\_rider\_1994\_carver\_390\_panel





---

## CONTACTS

---

Andrey Shestakov, leading yacht broker of the sales department of Shestakov Yacht Sales Inc. Shestakov Yacht Sales Inc., the official representative of the Miami/Fort Lauderdale FL headquarters.

---

### Contact details

---

Email:  
**andrey@shestakovyachtsales.com**

Web: [shestakovyachtsales.com/en/](http://shestakovyachtsales.com/en/)

---

### Telephones

---

USA: +1(954)274-4435

---

### Office hours

---

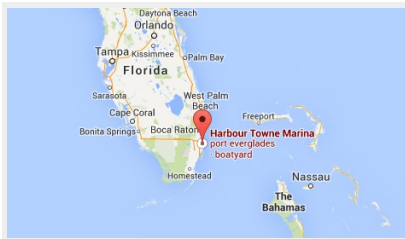
Monday – Saturday: **9:00 - 21:00** EDT

Sunday: **closed**

---

### Address

---



Harbour Towne Marina, 850 NE 3rd St,  
STE 213, Dania, FL 33004