

## PEPPIN — PASSPORT YACHTS



**Builder:** PASSPORT YACHTS

**Year Built:** 1983

**Model:** Cutter

**Price:** PRICE ON APPLICATION

**Location:** United States

**LOA:** 40' (12.19m)

**Beam:** 12.5

**Max Draft:** 5' 7" (1.7m)

**Cruise Speed:** 6 Knots Kts. (7 MPH)

Our experienced yacht broker, Andrey Shestakov, will help you choose and buy a yacht that best suits your needs **Peppin — PASSPORT YACHTS** from our catalogue. Presently, at Shestakov Yacht Sales Inc., we have a wide variety of yachts available on our sale's list. We also work in close contact with all the big yacht manufacturers from all over the world.

If you would like to buy a yacht **Peppin — PASSPORT YACHTS** or would like help answering any questions concerning purchasing, selling or chartering a yacht, please call **+1(954)274-4435**

---

# TABLE OF CONTENTS

---

TABLE OF CONTENTS	2
SPECIFICATIONS	6
Overview	6
Basic Information	6
Dimensions	6
Speed, Capacities and Weight	6
Accommodations	7
Hull and Deck Information	7
Engine Information	7
PHOTOS	8
0_2790857_	8
1_2790857_	8
2_2790857_	8
3_2790857_	8
4_2790857_	8
5_2790857_	8
6_2790857_	9
7_2790857_	9
8_2790857_	9
9_2790857_	9
10_2790857_	9
11_2790857_	9
12_2790857_	10
13_2790857_	10
14_2790857_	10
15_2790857_	10
16_2790857_	10
17_2790857_	10

---

19_2790857_	11
18_2790857_	11
20_2790857_	11
21_2790857_	11
22_2790857_	11
23_2790857_	11
25_2790857_	12
24_2790857_	12
26_2790857_	12
27_2790857_	12
28_2790857_	12
29_2790857_	12
30_2790857_	13
31_2790857_	13
32_2790857_	13
33_2790857_	13
34_2790857_	13
35_2790857_	13
36_2790857_	14
37_2790857_	14
38_2790857_	14
39_2790857_	14
40_2790857_	14
41_2790857_	14
42_2790857_	15
43_2790857_	15
44_2790857_	15
45_2790857_	15
47_2790857_	16

---

---

46_2790857_	16
48_2790857_	16
49_2790857_	16
50_2790857_	17
51_2790857_	17
52_2790857_	17
53_2790857_	17
54_2790857_	17
55_2790857_	17
56_2790857_	18
57_2790857_	18
58_2790857_	18
59_2790857_	18
60_2790857_	18
61_2790857_	18
62_2790857_	19
63_2790857_	19
64_2790857_	19
65_2790857_	19
66_2790857_	19
67_2790857_	19
68_2790857_	20
69_2790857_	20
70_2790857_	20
71_2790857_	20
72_2790857_	20
73_2790857_	20
74_2790857_	21
75_2790857_	21

---

IMG_6606	21
76_2790857_	21
IMG_6607	22
CONTACTS	23
Contact details	23
Telephones	23
Office hours	23
Address	23

---

# SPECIFICATIONS

---

## Overview

---

Peppin is the perfect example of how ongoing good housekeeping and preventative maintenance can preserve the beauty and history of a classic, and classy, sailing yacht. A skilled sailor will understand the value of an owner/USCG captain/carpenter whose expert craftsmanship is evident throughout this vessel. Her interior joinery can't be duplicated in the more recent boats, and her generous standing headroom with crisp white ceiling and abundant natural light create an airy open feel to the salon. There's plenty of seating, with an L-shaped settee at the port side dinette and long settee starboard that could function as an additional crew berth. Accommodations include a full shower in forward head and (hidden) head in aft cabin. The galley is configured for chef's comfort and safety while underway, with plenty of storage, double sink, dual access refrigeration and custom stove cover. And unlike many of her sisters, her original teak decks were removed before they caused damage by aging, and replaced with matching non-skid over fiberglass. She's a sight to behold both inside and out, and ready for coastal cruising or crossing oceans!

## Basic Information

---

**Category:** Cutter

**Model Year:** 1983

**Year Built:** 1983

**Country:** United States

## Dimensions

---

**LOA:** 40' (12.19mm)

**Beam:** 12.5

**Max Draft:** 5' 7" (1.7mm)

## Speed, Capacities and Weight

---

**Cruise Speed:** 6 Knots Kts. (7 MPH)

**Water Capacity:** 180 Gallons

**Holding Tank:** 25 Gal Gallons

**Fuel Capacity:** 198 Gal Gallons

---

## Accommodations

---

**Total Cabins:** 2

**Total Heads:** 2

---

## Hull and Deck Information

---

**Hull Material:** Other

---

## Engine Information

---

**Engines:** 1

**Manufacturer:** Perkins

**Engine Type:** Inboard

**Fuel Type:** Diesel

# PHOTOS

0\_2790857\_



1\_2790857\_



2\_2790857\_



3\_2790857\_



4\_2790857\_



5\_2790857\_





6\_2790857\_



7\_2790857\_



8\_2790857\_



9\_2790857\_



10\_2790857\_



11\_2790857\_



12\_2790857\_



13\_2790857\_



14\_2790857\_



15\_2790857\_



16\_2790857\_



17\_2790857\_



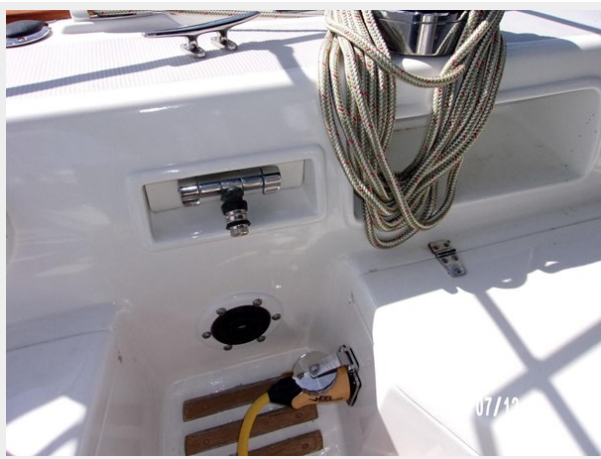
18\_2790857\_



19\_2790857\_



20\_2790857\_



21\_2790857\_



22\_2790857\_



23\_2790857\_



24\_2790857\_



25\_2790857\_



26\_2790857\_



27\_2790857\_



28\_2790857\_



29\_2790857\_



30\_2790857\_



31\_2790857\_



32\_2790857\_



33\_2790857\_



34\_2790857\_



35\_2790857\_



36\_2790857\_



37\_2790857\_



38\_2790857\_



39\_2790857\_



40\_2790857\_



41\_2790857\_



42\_2790857\_



43\_2790857\_



44\_2790857\_



45\_2790857\_



46\_2790857\_



47\_2790857\_



48\_2790857\_



49\_2790857\_





50\_2790857\_



51\_2790857\_



52\_2790857\_



53\_2790857\_



54\_2790857\_



55\_2790857\_



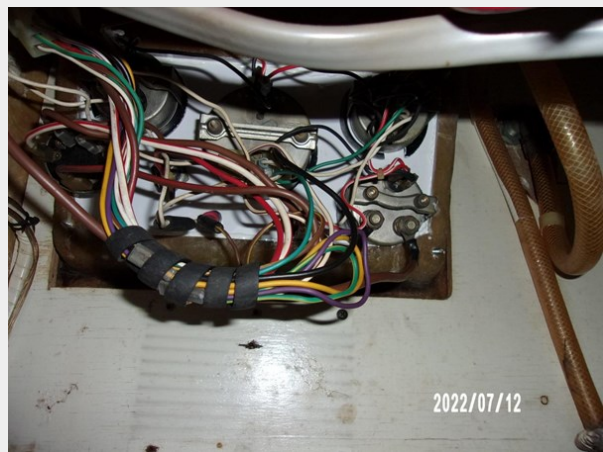
56\_2790857\_



57\_2790857\_



58\_2790857\_



59\_2790857\_



60\_2790857\_



61\_2790857\_



62\_2790857\_



63\_2790857\_



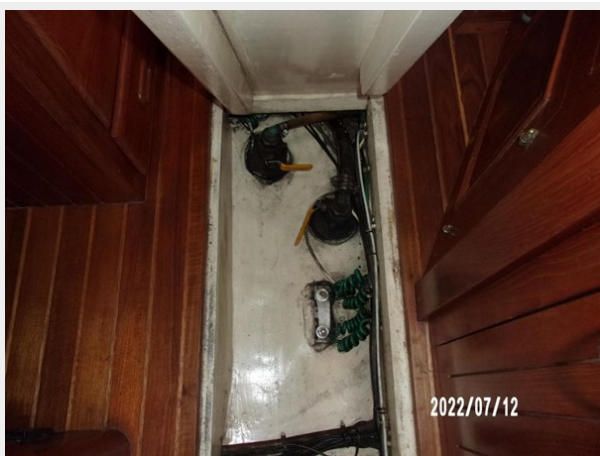
64\_2790857\_



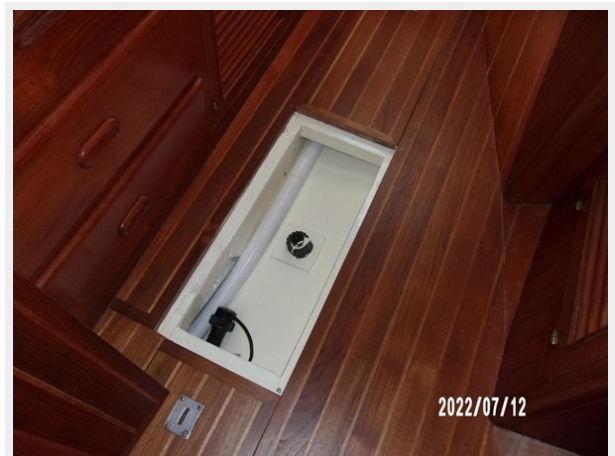
65\_2790857\_



66\_2790857\_



67\_2790857\_



68\_2790857\_



69\_2790857\_



70\_2790857\_



71\_2790857\_



72\_2790857\_



73\_2790857\_



74\_2790857\_



75\_2790857\_



IMG\_6606

76\_2790857\_



IMG\_6607



# CONTACTS

---

Andrey Shestakov, leading yacht broker of the sales department of Shestakov Yacht Sales Inc. Shestakov Yacht Sales Inc., the official representative of the Miami/Fort Lauderdale FL headquarters.

## Contact details

---

Email: [andrey@shestakovyachtsales.com](mailto:andrey@shestakovyachtsales.com)

Web: [shestakovyachtsales.com/en/](http://shestakovyachtsales.com/en/)

## Telephones

---

USA: +1(954)274-4435

## Office hours

---

Monday – Saturday: **9:00 - 21:00** EDT

Sunday: **closed**

## Address

---



Harbour Towne Marina, 850 NE 3rd St,  
STE 213, Dania, FL 33004