

CHASIN THE SUNSHINE — CRUISERS YACHTS



Builder: CRUISERS YACHTS

Year Built: 2016

Model: Cruising Yacht

Price: PRICE ON APPLICATION

Location: United States

LOA: 48' (14.63mm)

Beam: 14.5

Min Draft: 3' 6" (1.07mm)

Max Draft: 3' 6" (1.07mm)

Cruise Speed: 24 Knots Kts. (28 MPH)

Max Speed: 30 Knots Kts. (35 MPH)

Our experienced yacht broker, Andrey Shestakov, will help you choose and buy a yacht that best suits your needs **Chasin the Sunshine — CRUISERS YACHTS** from our catalogue. Presently, at **Shestakov Yacht Sales Inc.**, we have a wide variety of yachts available on our sale's list. We also work in close contact with all the big yacht manufacturers from all over the world.

If you would like to buy a yacht **Chasin the Sunshine — CRUISERS YACHTS** or would like help answering any questions concerning purchasing, selling or chartering a yacht, please call **+1(954)274-4435**

TABLE OF CONTENTS

TABLE OF CONTENTS	2
SPECIFICATIONS	5
Overview	5
Basic Information	5
Dimensions	5
Speed, Capacities and Weight	5
Accommodations	6
Hull and Deck Information	6
Engine Information	6
PHOTOS	7
IMG_7709	7
IMG_7712	7
IMG_7713	7
IMG_7714	7
IMG_7715	7
IMG_7718	7
IMG_7719	8
IMG_7721	8
IMG_7722	8
IMG_7724	8
IMG_7728	8
IMG_7723	8
IMG_7727	9
jimmy's cantius 1	9
IMG_7604	9
IMG_7605	10
IMG_7603	10
IMG_7602	10

IMG_7600	10
IMG_7601	11
IMG_7599	11
IMG_7565	11
IMG_7563	11
IMG_7597	12
IMG_7598	12
IMG_7596	12
IMG_7594	12
IMG_7566	13
IMG_7595	13
IMG_7567	13
IMG_7569	13
IMG_7571	14
IMG_7570	14
IMG_7574	14
IMG_7573	14
IMG_7576	15
IMG_7564	15
IMG_7593	15
IMG_7591	15
IMG_7579	15
IMG_7580	15
IMG_7581	16
IMG_7582	16
IMG_7583	16
IMG_7585	16
IMG_7587	17
IMG_7586	17

IMG_7588	17
IMG_7590	17
IMG_7584	18
IMG_7589	18
IMG_7578	18
IMG_7592	18
IMG_7575	19
IMG_7572	19
IMG_7611	19
IMG_7612	19
IMG_7613	20
IMG_7614	20
IMG_7615	20
IMG_7618	20
IMG_7619	21
IMG_7620	21
IMG_7621	21
IMG_7622	21
IMG_7703 jims new cantius pic 4	21
IMG_7701 jims new cantius pic 2	21
IMG_7700 jims new cantius pic 1	22
IMG_7704 jims new cantius pic 3	22
IMG_7702 jims new cantius pic 5	22
CONTACTS	23
Contact details	23
Telephones	23
Office hours	23
Address	23

SPECIFICATIONS

Overview

This is truly the most popular model ever created by Cruisers. The 48 Cantius combines modern styling with an innovative 2 salon layout in a yacht! By far the most notable Feature of the Cantius is her "loft" design where the Captain can oversee the upper area as well as the lower salon and Galley. The amount of natural light that is created from her large front windshields give the down below area an abundant amount of natural light. There is no area on this vessel that is not welcoming and comfortable. When you first enter into the vessel you will find ample area to entertain with a fully equipped entertainment center, wet bar and U-shaped Settee and a fixed table to port. If you are looking for that full beam master, look no further! The aft master stateroom is awesome! Wait until you see the VIP forward. Your VIP Guests will have a hard time leaving this yacht! Both queen beds are walkaround. She is a must see!

Basic Information

Category: Cruising Yacht

Sub Category: Sport Cruiser

Model Year: 2016

Year Built: 2016

Country: United States

Dimensions

LOA: 48' (14.63mm)

Beam: 14.5

Min Draft: 3' 6" (1.07mm)

Max Draft: 3' 6" (1.07mm)

Speed, Capacities and Weight

Cruise Speed: 24 Knots Kts. (28 MPH) **Max Speed:** 30 Knots Kts. (35 MPH)

Water Capacity: 80 Gallons

Holding Tank: 50 Gal Gallons

Fuel Capacity: 700 Gal Gallons

Accommodations

Total Cabins: 2

Sleeps: 6

Total Heads: 2

Hull and Deck Information

Hull Material: Fiberglass

Hull Configuration: Modified V-Hull

Hull Designer: Cruisers

Engine Information

Engines: 2

Manufacturer: Volvo Penta

Engine Type: Other

Fuel Type: Diesel

PHOTOS

IMG_7709



IMG_7712



IMG_7713



IMG_7714



IMG_7715



IMG_7718



IMG_7719



IMG_7721



IMG_7722



IMG_7724



IMG_7728



IMG_7723



IMG_7727



jimmy's cantius 1



IMG_7604



IMG_7603



IMG_7605



IMG_7602



IMG_7600



IMG_7601

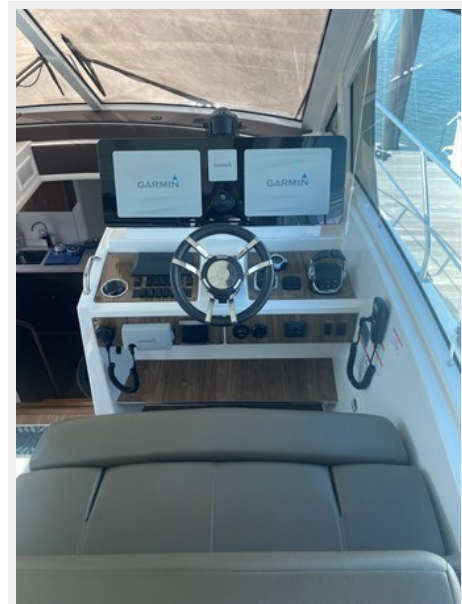


IMG_7599



IMG_7565

IMG_7563



IMG_7597



IMG_7598



IMG_7596



IMG_7594



IMG_7595



IMG_7566



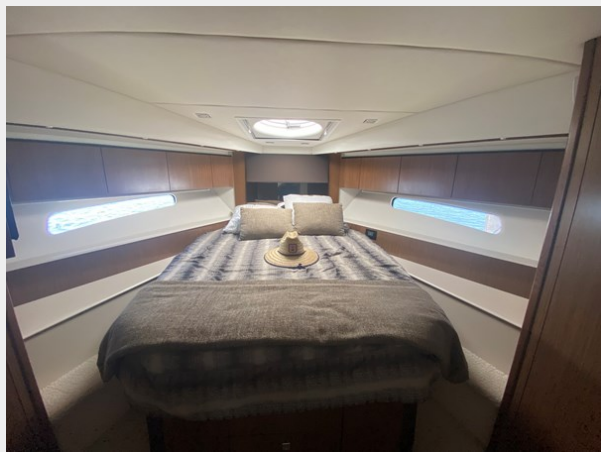
IMG_7567



IMG_7569



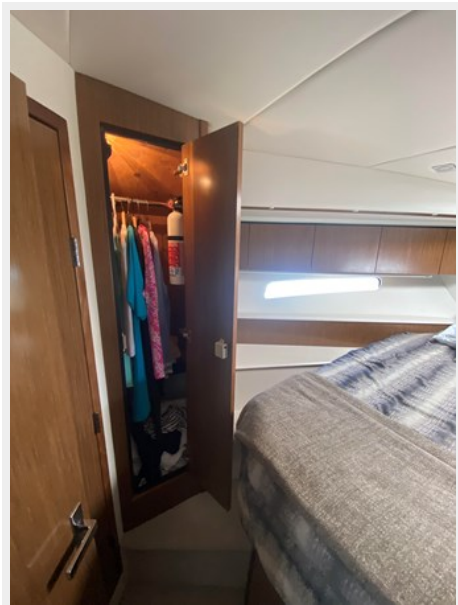
IMG_7570



IMG_7571



IMG_7574



IMG_7573



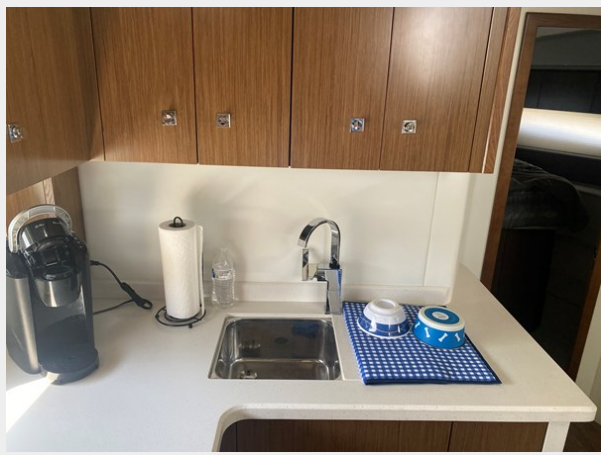
IMG_7576



IMG_7564



IMG_7593



IMG_7591



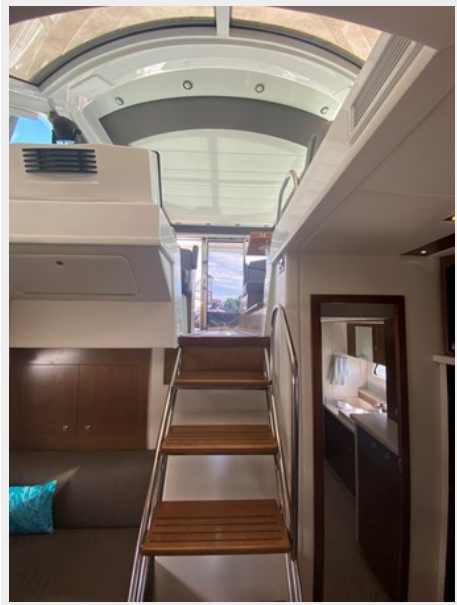
IMG_7579



IMG_7580



IMG_7581



IMG_7582



IMG_7583



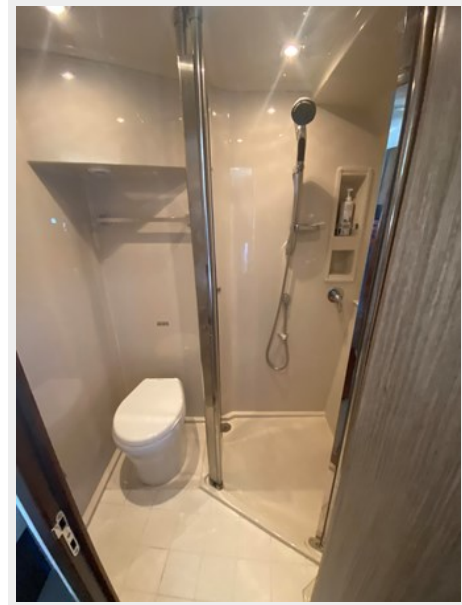
IMG_7585



IMG_7586



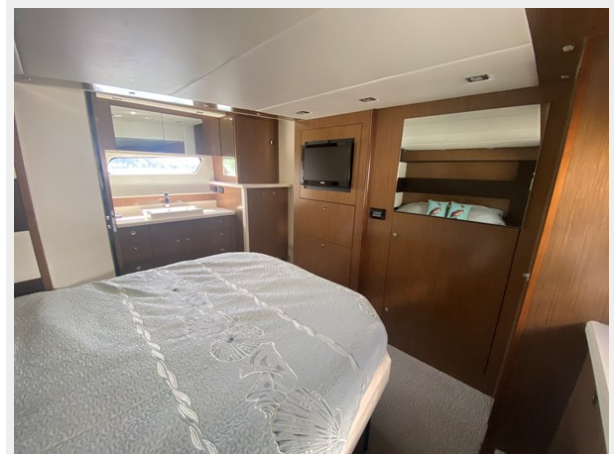
IMG_7587



IMG_7588



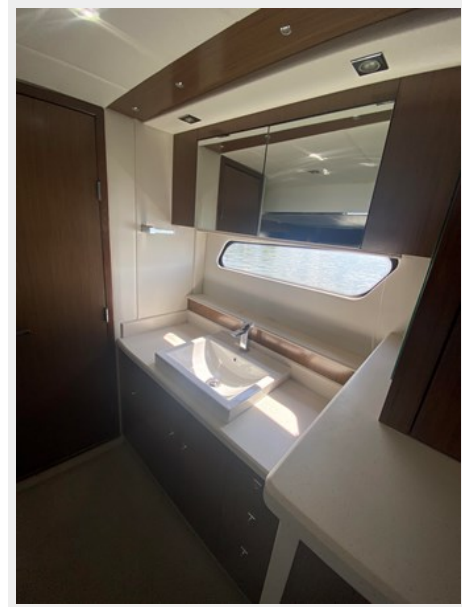
IMG_7590



IMG_7589



IMG_7584



IMG_7578



IMG_7592



IMG_7575



IMG_7572



IMG_7611



IMG_7612



IMG_7613



IMG_7614



IMG_7615



IMG_7618



IMG_7619



IMG_7620



IMG_7621



IMG_7622



IMG_7703 jims new cantius pic 4



IMG_7701 jims new cantius pic 2



IMG_7700 jims new cantius pic 1



IMG_7704 jims new cantius pic 3



IMG_7702 jims new cantius pic 5



CONTACTS

Andrey Shestakov, leading yacht broker of the sales department of Shestakov Yacht Sales Inc. Shestakov Yacht Sales Inc., the official representative of the Miami/Fort Lauderdale FL headquarters.

Contact details

Email: **andrey@shestakovyachtsales.com**

Web: shestakovyachtsales.com/en/

Telephones

USA: **+1(954)274-4435**

Office hours

Monday – Saturday: **9:00 - 21:00** EDT

Sunday: **closed**

Address



Harbour Towne Marina, 850 NE 3rd St, STE 213, Dania, FL 33004