

MY WAY — CARVER



Builder: CARVER

Year Built: 1984

Model: cruiser

Price: PRICE ON APPLICATION

Location: Canada

LOA: 32' (9.75mm)

Beam: 11.58

Max Draft: 2' 10" (0.86mm)

Cruise Speed: 9 Knots Kts. (10 MPH)

Max Speed: 13 Knots Kts. (15 MPH)

Our experienced yacht broker, Andrey Shestakov, will help you choose and buy a yacht that best suits your needs **My way — CARVER** from our catalogue. Presently, at Shestakov Yacht Sales Inc., we have a wide variety of yachts available on our sale's list. We also work in close contact with all the big yacht manufacturers from all over the world.

If you would like to buy a yacht **My way — CARVER** or would like help answering any questions concerning purchasing, selling or chartering a yacht, please call **+1(954)274-4435**

TABLE OF CONTENTS

TABLE OF CONTENTS	2
SPECIFICATIONS	3
Overview	3
Basic Information	3
Dimensions	3
Speed, Capacities and Weight	3
Accommodations	4
Hull and Deck Information	4
Engine Information	4
PHOTOS	5
IMG_0397	5
IMG_0398	5
IMG_0400	5
IMG_0399	5
IMG_0401	6
IMG_0402	6
IMG_0403	6
CONTACTS	7
Contact details	7
Telephones	7
Office hours	7
Address	7

SPECIFICATIONS

Overview

The Carver 3207 provides a lot of living space in 32'. With a full V double V berth, Aft Cabin with double berths and a convertible dinette she sleep 6 comfortably. The twin Pleasure Marine 240 Hp allow for multi modes. Semi displacement at apporx 13Kts or economical travel at 9kts.

A full enclosed helm and covered aft deck make an any weather boat. This owner has updated the solar capabilities to 300W.

The swim platform has been extended and easily hold a tender, plus motor bracket and powered outboard lift. (Dingy not included)

Basic Information

Category: cruiser

Sub Category: Double Cabin

Model Year: 1984

Year Built: 1984

Country: Canada

Dimensions

LOA: 32' (9.75mm)

Beam: 11.58

Max Draft: 2' 10" (0.86mm)

Speed, Capacities and Weight

Cruise Speed: 9 Knots Kts. (10 MPH)

Max Speed: 13 Knots Kts. (15 MPH)

Water Capacity: 66 Gallons

Holding Tank: 30 Gal Gallons

Fuel Capacity: 140 Gal Gallons

Accommodations

Total Cabins: 2

Hull and Deck Information

Hull Material: Fiberglass

Engine Information

Engines: 2

Manufacturer: Pleasurecraft Marine

Engine Type: Inboard

Fuel Type: Gas

PHOTOS

IMG_0397



IMG_0398



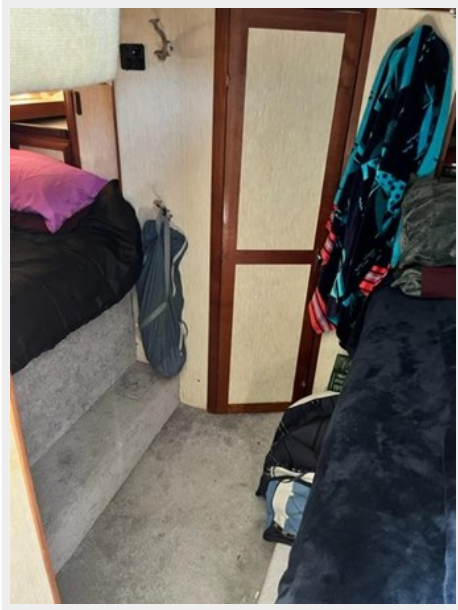
IMG_0400



IMG_0399



IMG_0401



IMG_0402



IMG_0403



CONTACTS

Andrey Shestakov, leading yacht broker of the sales department of Shestakov Yacht Sales Inc. Shestakov Yacht Sales Inc., the official representative of the Miami/Fort Lauderdale FL headquarters.

Contact details

Email: andrey@shestakovyachtsales.com

Web: shestakovyachtsales.com/en/

Telephones

USA: +1(954)274-4435

Office hours

Monday – Saturday: **9:00 - 21:00** EDT

Sunday: **closed**

Address



Harbour Towne Marina, 850 NE 3rd St,
STE 213, Dania, FL 33004